



Advanced Heating
& Hot Water Systems

HIGH EFFICIENCY **Crossover** Floor Water Heater



Fighting the High Cost of Water Heating!

Fully Condensing
Achieves up to
95% Thermal Efficiency

Half the Storage &
Twice the Btuh Result
in a Recovery Rate
that is 4 Times Faster
than Traditional
Storage Units!



To place an order contact
your local representative
www.htproducts.com/rep



www.htproducts.com



The Crossover

Incorporates the best of both worlds in one unit with its tank and tankless components. The result is one appliance that exceeds all of your hot water needs



We are excited to introduce the new high efficiency Crossover Floor. This revolutionary product was designed to be the most highly efficient affordable residential tank type product in the industry.

High Performance

The Crossover Residential/Commercial Floor model combines the flow capacity of a 50 gallon tank type water heater with the continuous flow feature found in tankless water heaters. It has dual activation by flow or thermostat sensing which guarantees hot water delivery even with low flow fixtures. It's built in fire tube heat exchanger is surrounded by a stainless steel tank that holds a full 20 gallons of up to 147 F degree hot water and then mixes the delivered temperature down through a **ASSE 1017 mixing valve** and can thus fill a 40 gallon tub at the same rate as a traditional 50 gallon tank type water heater. The RGH 75, 76 & 100 can also produce more first hour delivery than conventional 50 gallon water heaters. These new models will change the way people view residential water heating and it is only available through HTP and our agent partners.

Fantastic Features

Extra thick insulation combined with small water volume storage result in very low standby loss	High altitude compliant – certified up to 10,000 ft. above sea level
All stainless steel tank construction with integrated fire tube heat exchanger design	Endless hot water - advanced temperature control - compatible with recirculation systems
Preset for natural gas ships with a liquid propane conversion kit	Eco-friendly and low NOx combustion system leave almost no carbon footprint
Air handler application: Combination heating & DHW	Includes an ASSE 1017 domestic rated thermostatic valve (prepped) increasing 1st draw capacity & temperature control

A Closer Look

Super Durable All Stainless Steel Fire Tube Heat Exchanger

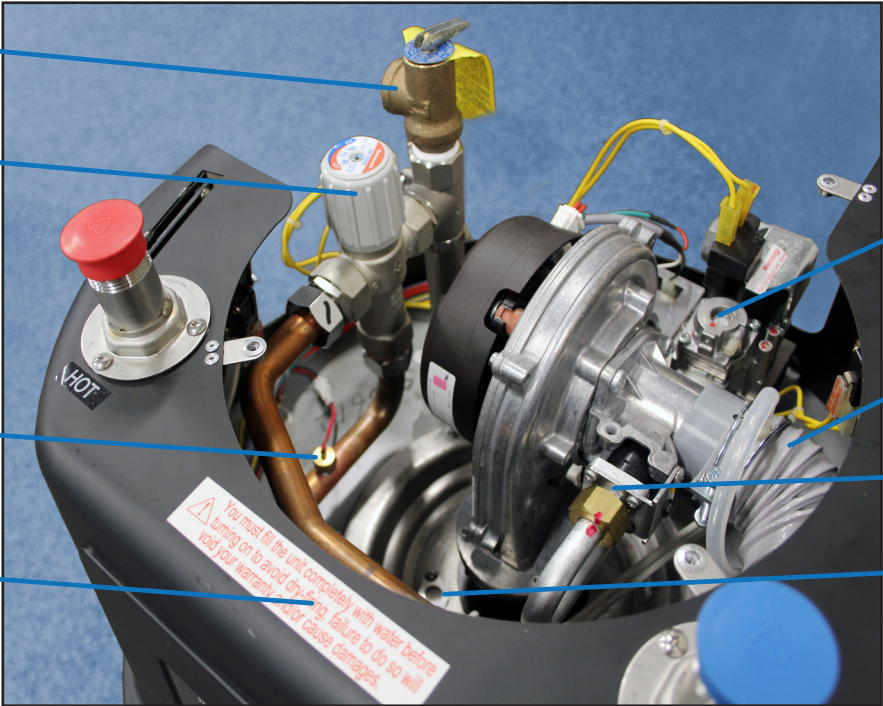


T&P Valve
and Direct
Tank Outlet

1017 ASSE
Mixing Valve

Mixed Outlet
Temperature
Sensor

Dry Firing
Warning
Label



Gas Offset
Adjustment

Direct Air
Inlet Connection

Gas Orifice
for NG/LP

Combustion
Viewing Port

HIGH EFFICIENCY **Crossover**



Floor Water Heater

Produce More
Hot Water than a
Standard Tank with

40%

Less Space Required
than a Standard Tank



20 Gallon Tank Size



Powerful Downward
Firing Stainless Steel
Fire Tube Heat Exchanger

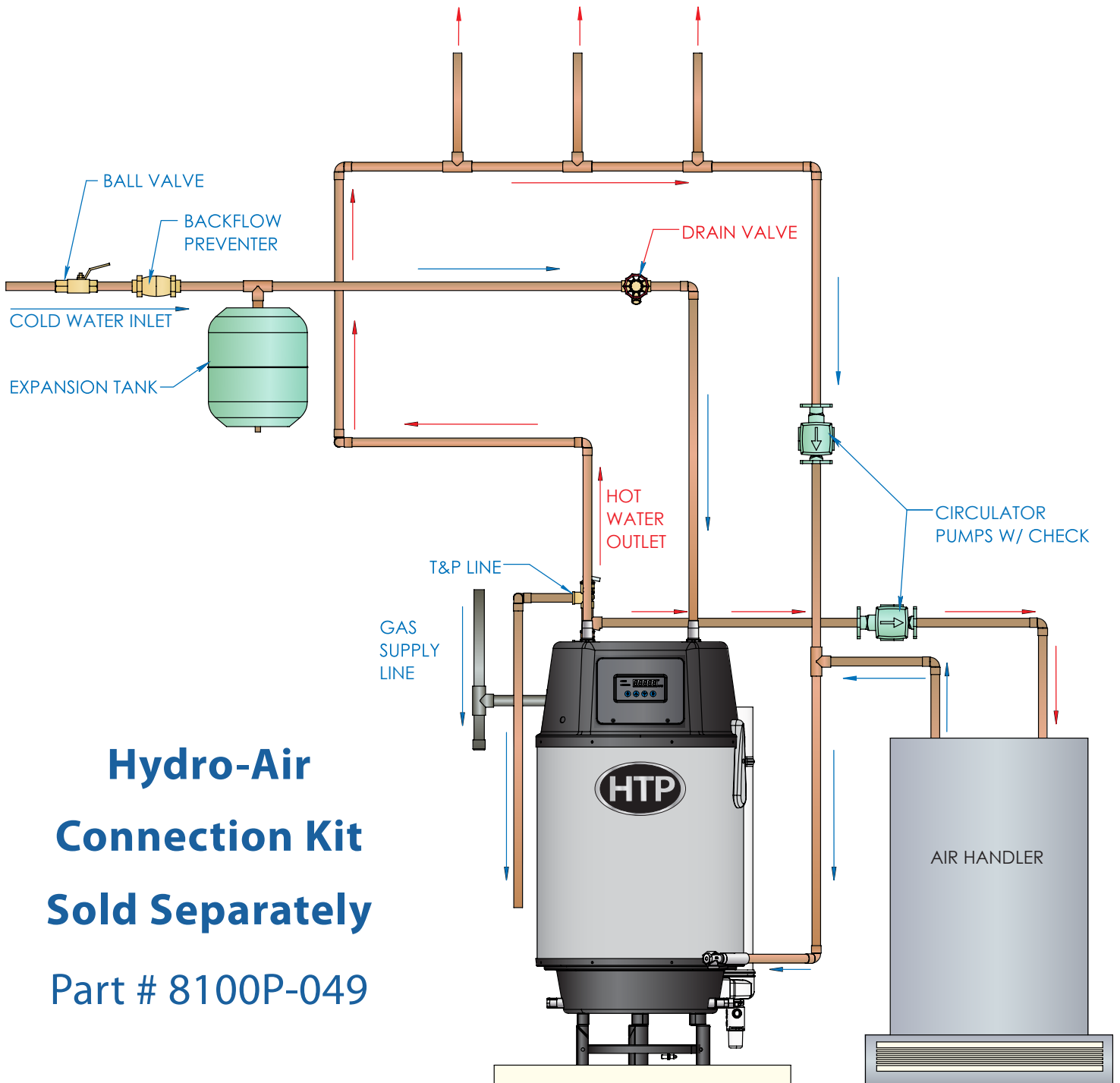
Compare the RGH with the Competition

		Crossover (20 gallon)			Tank Type		Tankless	
		RGH20-75	RGH20-76	RGH20-100	50 Gal. Atmospheric	50 Gal. Power Vent	199K Btuh	199 Btuh (Non Condensing)
Features	Efficiency	EF.83 UEF .88	UEF .89	95% TE UEF .87	.60 EF	.70 EF	.95 EF	.82 EF
	Ultra Lo NOx Complaint	YES	YES	YES	NO	NO	Varies by Model	Varies by Model
Performance	Btuh	75,000	76,000	100,000	40,000	40,000	199,000	199,000
	First Hour Rating @ 90°F Rise	107	107	130	88	90	NO	NO
	30 Gal. Dump Capabilities	YES	YES	YES	YES	YES	NO	NO
	Zero Flow Activation	YES	YES	YES	YES	YES	NO	NO
	Optional Two-Temperature Delivery Capability (with kit)	YES	YES	YES	NO	NO	NO	NO
Savings	Annual Operating Energy Cost (NG)	\$196	N/A - TE Classification	N/A - TE Classification	\$272	\$233	\$172	\$199
Materials	Tank	Stainless Steel	Stainless Steel	Stainless Steel	Glass Lined Carbon Steel	Glass Lined Carbon Steel	Stainless Steel/ Copper	Copper
	Heat Exchanger	Stainless Steel	Stainless Steel	Stainless Steel	Glass Lined Carbon Steel	Glass Lined Carbon Steel	Stainless Steel/ Copper	Copper
	Annual HX Anti-Scale Maintenance Required	NO	NO	NO	NO	NO	YES	YES
Installation	Venting	PVC	PVC	PVC	B-Vent	PVC	PVC	Stainless Steel Category III
	Vent Length	3" at 100'	3" at 100'	3" at 100'	3" at 50'	3" at 100'	2" at 50'	3" at 50'
	Space Saving Low Profile Vent Capability	YES	YES	YES	NO	NO	NO	NO
	Anti-Draft Direct Vent Capable	YES	YES	YES	NO	NO	YES	YES
	Field Convertible	YES	YES	YES	NO	NO	Varies	Varies
	Anti-Scald Mixer (ASSE 1017)	YES	YES	YES	NO	NO	NO	NO
Display	Digital with Error Codes	YES	YES	YES	NO	NO	Varies by Model	Varies by Model
Dimensions	Height	38.6"	38.6"	38.6"	57"	50 3/4"	23 5/8"	20 1/2"
	Diameter	21"	21"	21"	22"	24"	N/A	N/A
	Width	21"	21"	21"	22"	24"	17 3/4"	13 3/4"
	Depth	21"	21"	21"	22"	24"	11 1/4"	10 1/2"
	Weight	110 lbs.	110 lbs.	110 lbs.	165 lbs.	198 lbs.	63 lbs.	51 lbs.

THE CROSSOVER WITH AN AIR HANDLER (HYDRO AIR): DOMESTIC HOT WATER & SPACE HEATING COMBINATION

HTP's Crossover Hydro-Air System:

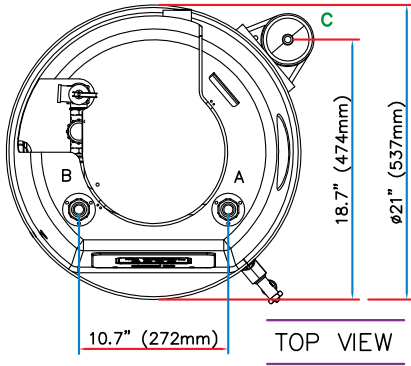
HTP's Crossover Water Heating technology features the best of both worlds – a tank and tankless water heater combined into one superior unit! Now add an Airhandler to the Crossover to create a complete comfort solution for domestic hot water and space heating.



**Hydro-Air
Connection Kit
Sold Separately
Part # 8100P-049**

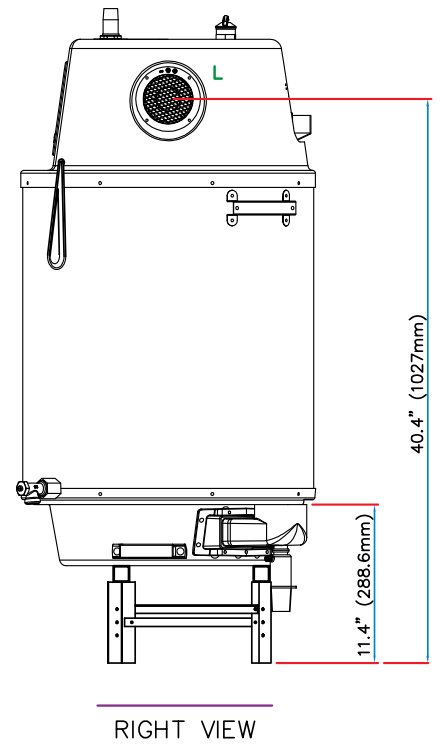
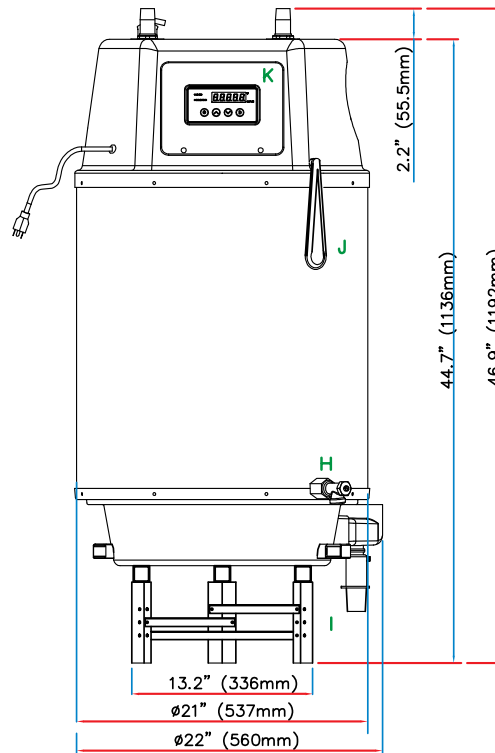
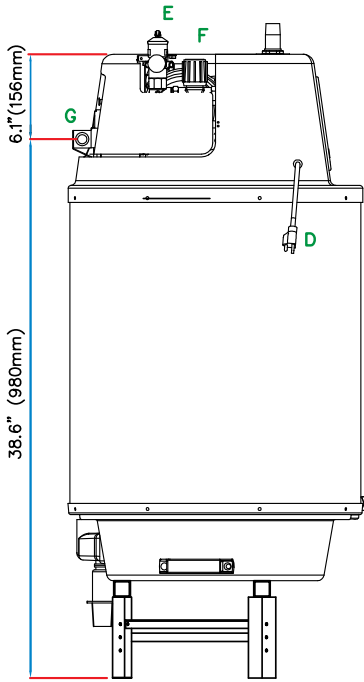
RGH20-75F, RGH20-76F & RGH20-100F

20 Gallon Tanks

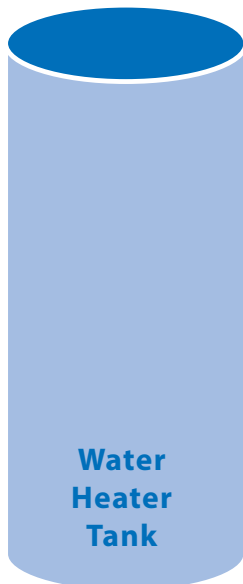


- A – Cold Water Inlet 3/4" Male NPT
- B – Hot Water Outlet 3/4" Male NPT
- C – 3" Exhaust
- D – Electric Cord
- E – T & P Valve
- F – Thermostatic Mixing Valve
- G – Gas Connection 1/2" or 3/4" Female NPT
- H – Drain Valve
- I – Condensate System 1/2" Male NPT
- J – Tank Sensor
- K – Display Control
- L – 3" Air Intake

FRONT VIEW



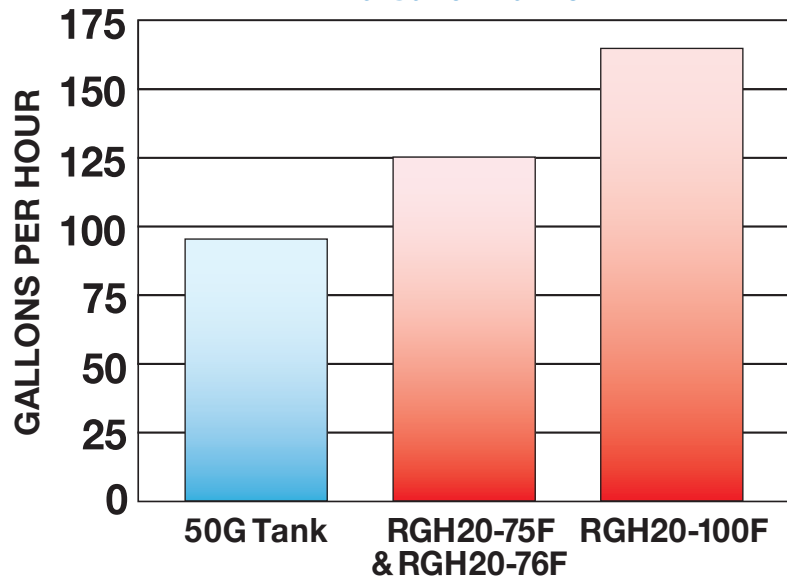
The Best of Both Worlds





HIGH EFFICIENCY Crossover

RGH20-75F, RGH20-76F & RGH20-100F
20 Gallon Tanks



Model	RGH20-75F	RGH20-76F	RGH20-100F*
Efficiency	UEF .88	UEF .89	TE 95% / UEF .87
Recovery Efficiency	99%	96%	99%
Nominal/DOE Rated Storage Volume	20 Gallon		
Installation	Indoor / Floor Standing		
Vent Run	3" PVC or Polypropylene Up to 100ft, 8 Elbows Max (3" pipe) [3ft Deduction Per 45° Elbow] [5ft Deduction Per 90° Elbow]		
Condensate Discharge	2GPH		
Condensate pH Level	4 pH		
Gas Type	Preset for NG / LP Conversion Kit Included		
Unit Connections	Gas	1/2" or 3/4" Female NPT (3/4" by 1/2" Bushing Adapter Included)	
	Water	3/4" Male NPT	
	Electricity	Dedicated 120VAC, 60Hz w/3 Pronged 5 1/2 ft. Power Cord	
	Condensate	1/2" Male NPT Connection	
Gas Input Rate (Hourly)	37,500 -75,000 Btuh	38,000 -76,000 Btuh	50,000 -100,000 Btuh
Gas Supply Pressure - NG / LP	3.5"WC to 14"WC / 3.5"WC to 14"WC		
Ignition System	Spark Ignition, No Pilot		
Burner System	Single Orifice Premixed Fuel Injection Metal Fiber Infrared		
Gas Valve System	Air Ratio Negative Pressure		
First Hour Output @ 67°F / 90°F	120 Gal. / 108 Gal.	131 Gal. / 108 Gal.	NA / 130 Gal.
First Hour Rating Bin	High	High	NA
Tank Material	Stainless Steel		
Temperature Sensing	Inner Tank and Hot Outlet Discharge Pipe Sensors		
Domestic Temperature Control	Thermostatic Mixing Valve - ASSE 1017 Rated		
Domestic Temperature Settings Range	120°F Factory Preset / Adjust Knob 70°F to 147°F		
Tank Storage Temperature Settings	Normal 127°F / Hot 137°F / Hotter 147°F		
Unit Dimensions (D x H)	21" x 47"		
Unit Weight	110 lbs		
Safety Devices	T&P Valve, Vent Blockage APS, Flame Rod, Fan RPM Check, Eco Burner Plate (305° F), Eco Water Limit (194° F)		
Optional Accessories	3" Horizontal Terminal, Concentric Venting Kit, Condensate Neutralizer Kit		

* RGH20-100F has a Max GPM of 2.8, a Max GPM Rating Bin of Medium and is not Energy Star certified

272 Duchaine Blvd, New Bedford, MA 02745 • 04 / 2019 © HTP Comfort Solutions LLC.

In accordance with our company policy of ongoing product improvement, © HTP Comfort Solutions LLC. reserves the right to make changes without prior notice. • All weights are approximate.