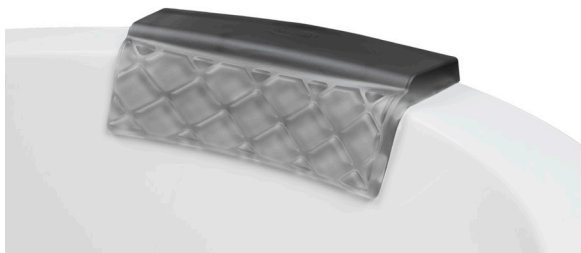
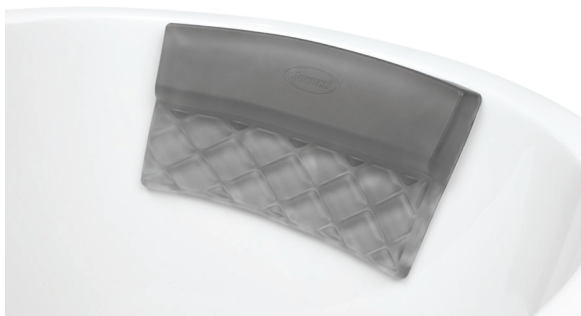




LENIRE™ LUXURY PILLOW
WITH Technogel®



TURN OVER FOR INSTRUCTIONS

LENIRE™ Luxury Pillow with Technogel®

INSTALLATION INSTRUCTIONS

- Remove the clear film backing from the flat side of the pillow
- Ensure that the intended bathtub surface is clean and dry
- Press pillow against the bathtub surface. Do not try to place the bath pillow on a wet surface.
- To remove the bath pillow, start by pulling up one of the top corners of the pillow
- To store the pillow, simply re-apply the clear film against the adhesive surface and place back in the box

CARE AND CLEANING INSTRUCTIONS

- Dust and dirt can accumulate on the adhesive area on the back of the pillow. To clean, simply rinse with water to remove any dirt and dust and let the pillow air dry. The adhesive characteristic will return when the pillow has dried.
- Do not use any detergents that contain alcohol on the pillow surface to clean
- Do not clean the pillow with a brush or an abrasive cleaning tool



@JacuzziBathus



www.jacuzziluxurybath.com