

BEASLEY IN-WALL SHOWER DIVERTER

SKU: 948692

Code: SHBE9005, SHBE90052, SH6103



FEATURES

Installation Type: Wall Mount

Design: Traditional

Material: Brass

Assembly Required: No

Shape: Round

Handle Type: Lever

Installation Type: Wall Mount

NPT Connection: 3/4"

Valve Trim Width: 4-3/8"

Valve Trim Height: 4-3/8"

Diverter Included: Yes

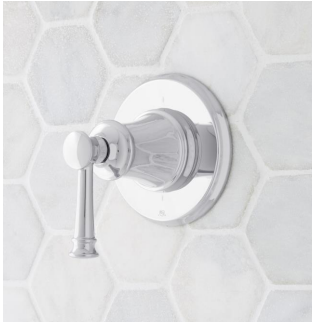
ASME A112.18.1/CSA B125.1

REVISED 7/13/2023

BEASLEY IN-WALL SHOWER DIVERTER

SKU: 948692

Code: SHBE9005, SHBE90052, SH6103

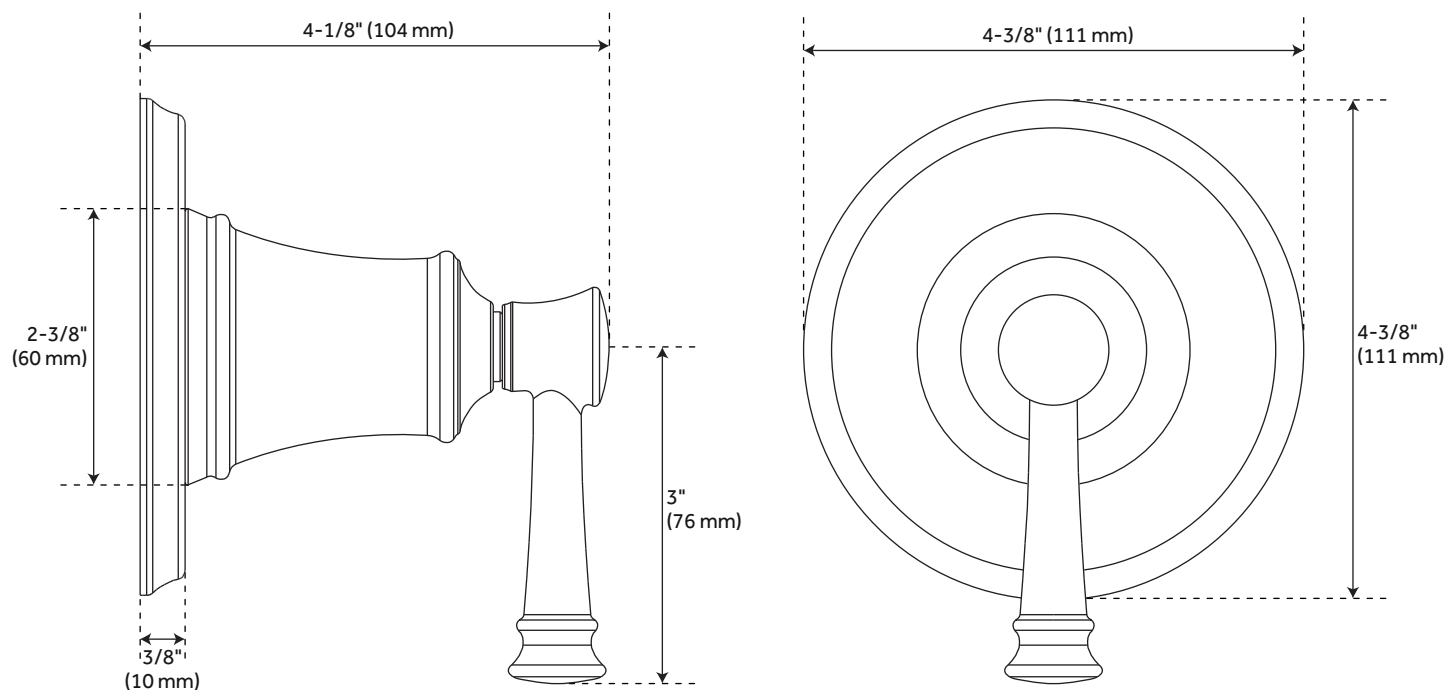


ADDITIONAL FEATURES

- Metal handle.
- Metal Escutcheon.
- Not intended as a shut off valve.
- Six total settings allow for shared water flow between outlets, giving you the ability to use two functions at once.
- Optional Rough-in Valve:
 - Available Single-Function Diverter Valve Cartridge restricts water flow to one outlet at a time.
 - Brass valve body.
 - Ceramic cartridge.
 - Must be installed in accordance with provided installation instructions.

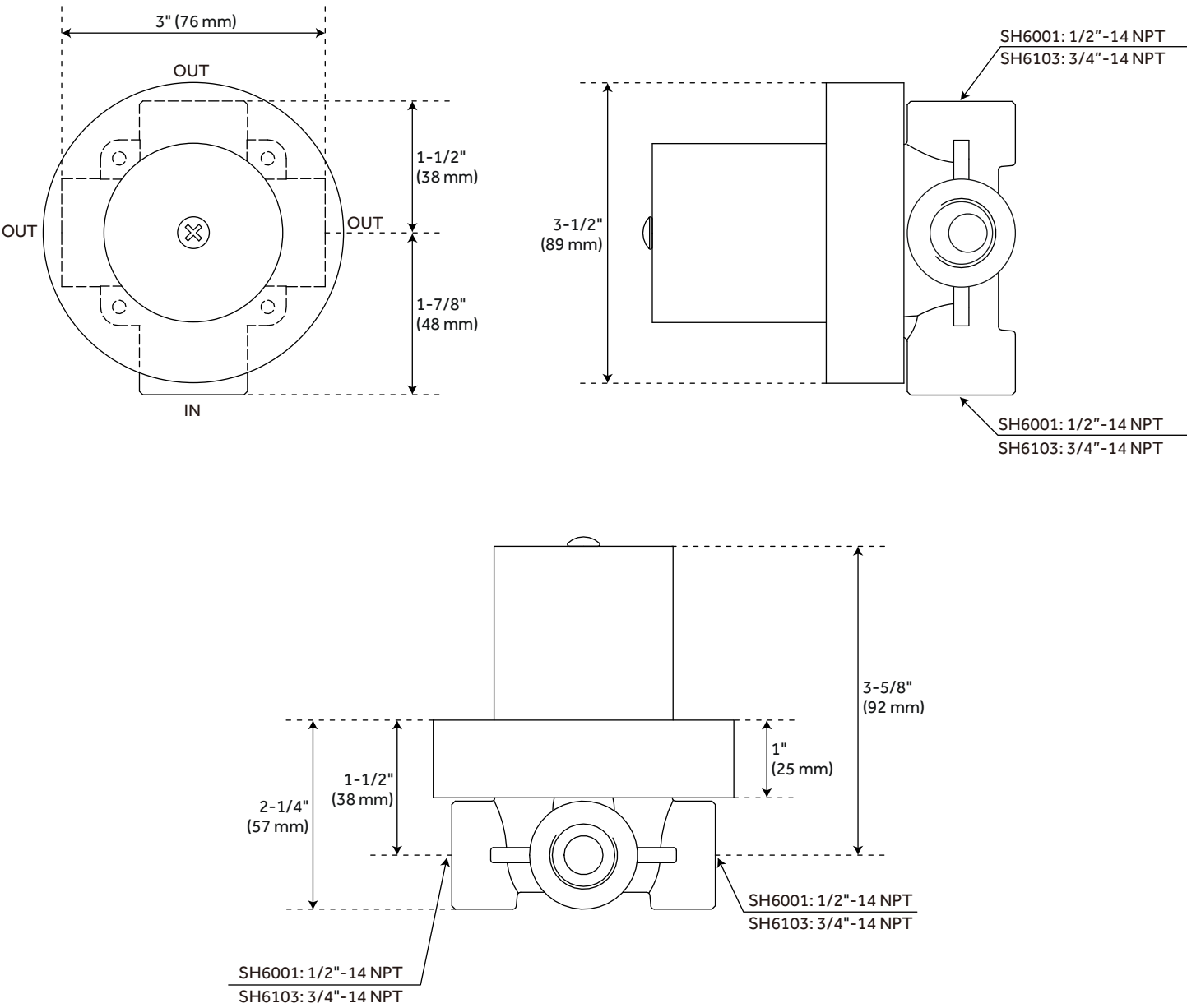
REVISED 7/13/2023

BEASLEY IN-WALL SHOWER DIVERTER



All dimensions and specifications are nominal and may vary. Use actual products for accuracy in critical situations.

BEASLEY OPTIONAL 3-WAY IN-WALL DIVERTER ROUGH-IN VALVE



All dimensions and specifications are nominal and may vary. Use actual products for accuracy in critical situations.