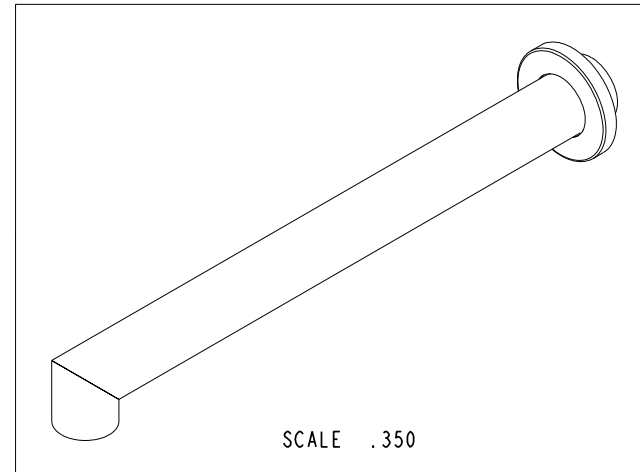
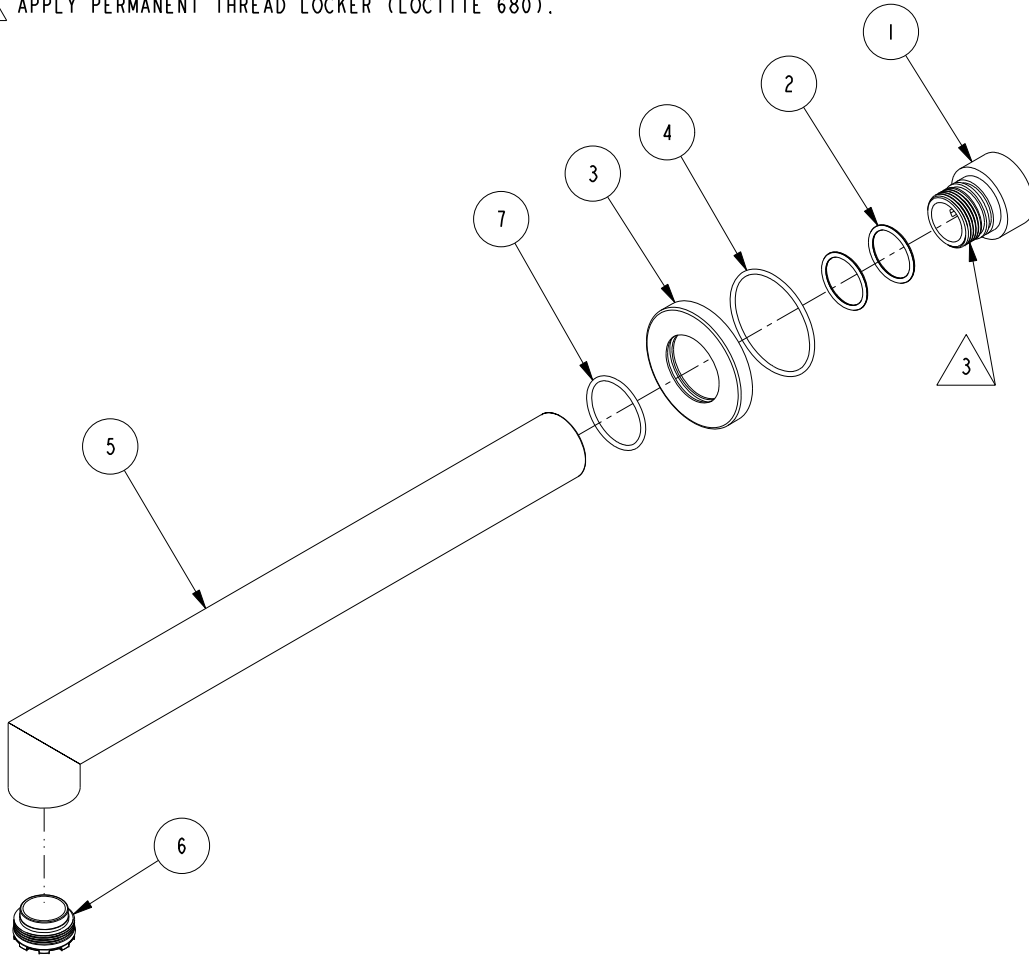


NOTES:

- (N1) 1. FIT / FORM / FUNCTION SHALL FOLLOW PS-E.008.
- 2. APPLY THIN COAT OF SILICON GREASE ON TO ALL 'O' RINGS BEFORE INSTALLATION.
- 3. APPLY PERMANENT THREAD LOCKER (LOCTITE 680).

BILL OF MATERIAL (CURRENT LEVEL)

| ITEM | PT/ASSY | DESCRIPTION | TYPE | QTY. |
|------|---------|---|----------|------|
| 1 | 11894 | WALL MOUNT TUB - ADAPTER | PART | 1 |
| 2 | 91022 | O-RING, #2- 018, EPDM, 65-75 DURO, NSF 61 | PART | 2 |
| 3 | 12285 | W/M TUB- ESCUTCHEON | PART | 1 |
| 4 | 91159 | O-RING, #2-029, EPDM, 65-75 DURO, NSF 61 | PART | 1 |
| 5 | 20-307 | W/M TUB - SPOUT BRAZE ASM | ASSEMBLY | 1 |
| 6 | 11711 | HIDDEN FAUCET AERATOR | PART | 1 |
| 7 | 91024 | O-RING, #2- 022, EPDM, 65-75 DURO | PART | 1 |



| ZONE | REV | DESCRIPTION | DATE | APPROVED |
|------|-----|-------------|----------|----------|
| - | A | EN-3503 | 12/19/17 | J.M. |
| - | - | EN-3408 | 09/22/17 | J.M. |

COPYRIGHT 2005 BRASSTECH, INC.
 THESE DRAWINGS AND THE DESIGNS
 DEPICTED HEREIN ARE THE PROPRIETARY
 PROPERTY OF BRASSTECH. ANY USE
 OR REPRODUCTION IS SUBJECT TO
 THE EXPRESS APPROVAL OF BRASSTECH.
 UNAUTHORIZED USE IS STRICTLY
 PROHIBITED. ALL RIGHTS RESERVED.

| TESTING | ASSEMBLY | PLATING | POLISHING | MACHINING | TOOLING FIXTURE # | APPLICATION |
|---------|----------|---------|-----------|-----------|-------------------|----------------------------------|
| - | - | - | - | - | - | REMOVE ALL BURRS AND SHARP EDGES |
| - | - | - | - | - | - | - |

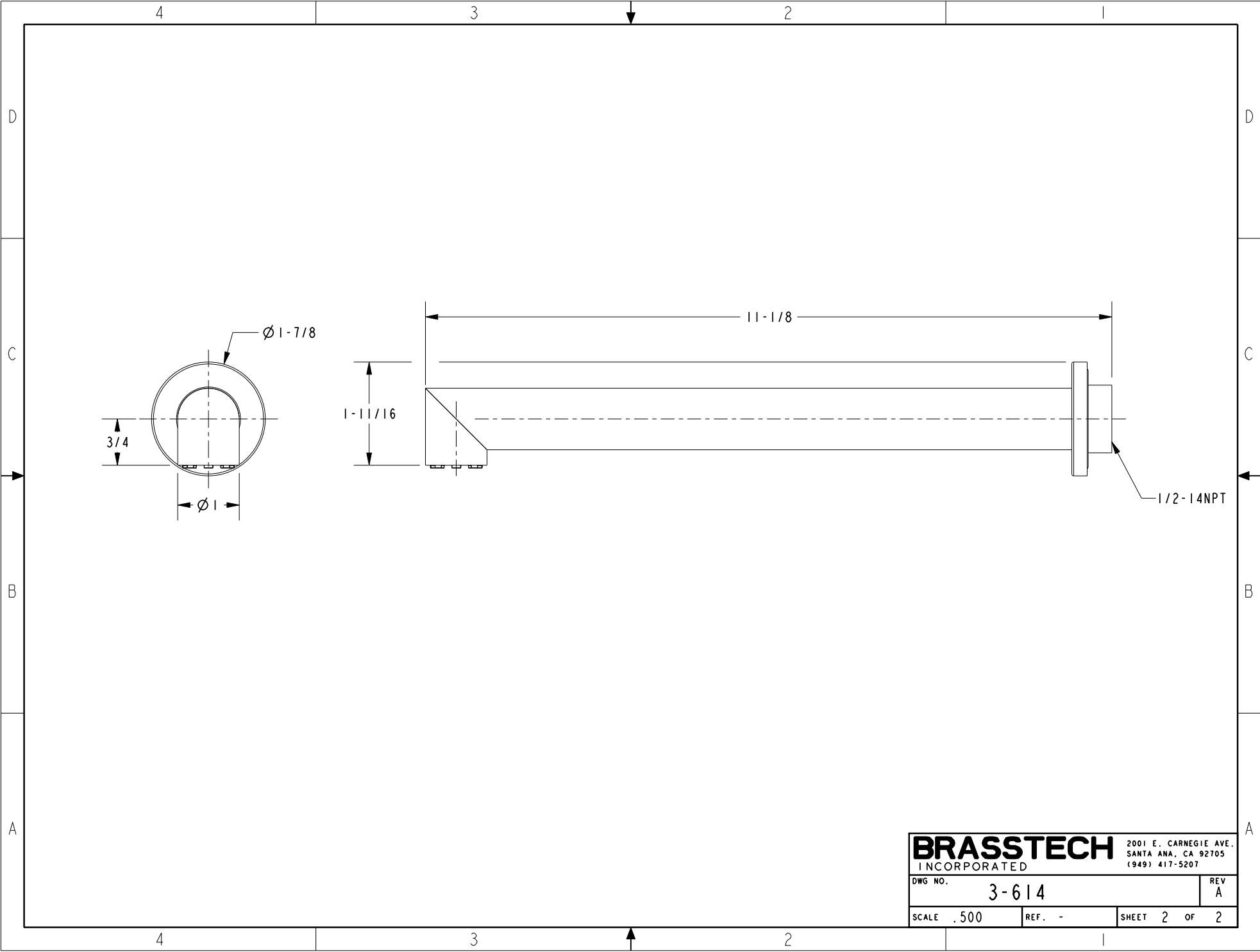
| | |
|--------------------------------|-------------------|
| UNITS ARE: INCHES [MM] | TOLERANCES ARE: |
| FRACTIONS DECIMALS | ANGLES |
| ±1/16" | ±1° |
| .X ±.1 [2.5] | |
| .XX ±.06 [1.5] | |
| (X.XXX) DENOTES CRITICAL DIMS. | |
| ALL THREADS ARE CRITICAL | |
| DRAWN | JINSON 09/22/17 |
| CHECKED | RAVINDRA 09/22/17 |
| APPROVED | J.M 09/22/17 |

BRASSTECH 2001 CARNEGIE AVE.
 INCORPORATED SANTA ANA, CA 92705
 (949) 417-5207

SPOUT & ESCUTCHEON ASM - WALL MOUNT TUB

DWG NO. **3-614** REV **A**

SCALE .375 REF. - SHEET 1 OF 2



| | | | |
|------------------|-------|-----------------------|--------|
| BRASSTECH | | 2001 E. CARNEGIE AVE. | |
| INCORPORATED | | SANTA ANA, CA 92705 | |
| | | (949) 417-5207 | |
| DWG NO. | 3-614 | REV | A |
| SCALE | .500 | REF. | - |
| | | SHEET | 2 OF 2 |