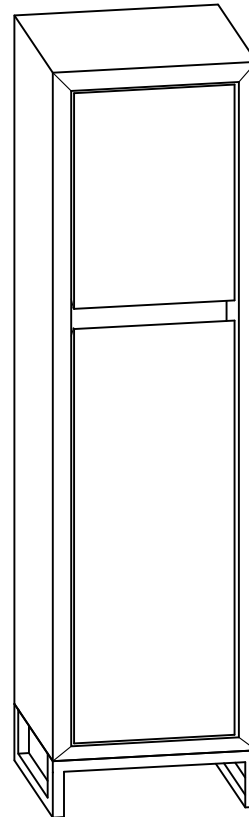
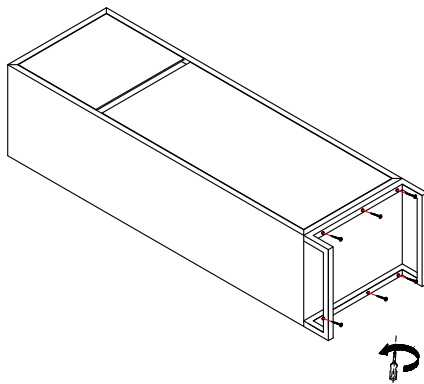


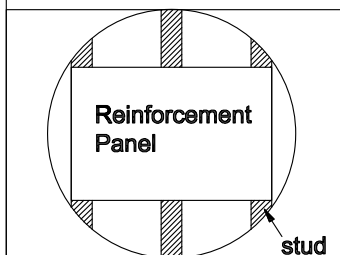
1505-ST2016_LEG2016

Step 1

Detach mounting bracket from vanity




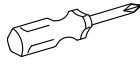
Cut opening in wall



Reinforcement Panel

* large enough to cover 2 studs

* not provided by manufacturer

PARTS INCLUDED				TOOLS AND MATERIALS	
1	 $\Phi 8 \times 38\text{mm}$	6 PCS		 Screwdriver	
2					
3					
4					

Fairmont Designs highly recommends that you seek a professional installation specialist if you are unsure of installation. Please note: Fairmont Designs is not responsible for any installation error,