

Kwikset



POCKET DOOR LOCK

Kwikset's innovative pocket door locks offer traditional and contemporary styles for any sliding door.

- New contemporary square trim
- Fits standard door prep
- Push-to-pull latch for easy access
- Ideal for spaces with a concealed door like an office, bathroom, laundry room or closet door



Pocket Door Lock
in Polished Chrome

#1 SELLING U.S. LOCK BRAND*

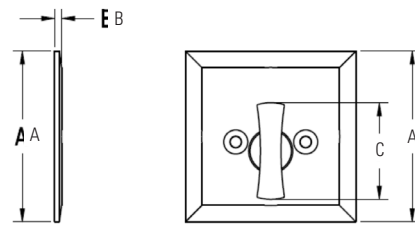
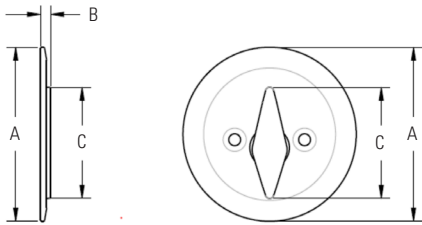
Source: TraQline US quarterly brand unit share report, Q4 2006 through Q4 2018

372541-3/19

Specifications

Door Prep	Cross Bore 2-1/8". Edge Bore 1".	Bolt	1" throw.
Backset	2-3/8"	Door Handing	Reversible for right or left-handed doors.
Faceplates	1" x 2-1/4". Square or round corner.	ANSI/BHMA	N/A
Strikes	1" x 2-1/4". Square or round corner.		

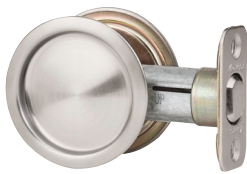
Dimensions



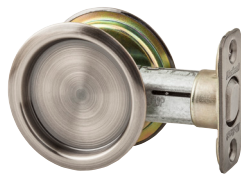
Design	A	B	C
Round	2 15/32"	1 5/32"	1 19/32"

Design	A	B	C
Square	2 7/16"	1 5/32"	1 3/8"

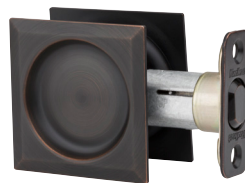
Finishes



Satin Nickel 15



Antique Nickel 15A



Venetian Bronze 11P



Satin Nickel 15



Stainless Steel 32



Satin Chrome 26D



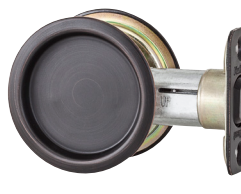
Polished Chrome 26



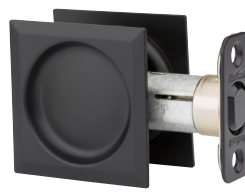
Satin Chrome 26D



Iron Black 514



Venetian Bronze 11P



Iron Black 514

LIFETIME WARRANTY