

# P8071 SERIES

6IN LED New Construction And Remodel • Wet location listed



## Description:

The P8071 is ideal for use in both new construction as well as remodel/retrofit. Light output is comparable to that of a typical 65W incandescent downlight, providing up to 75% energy savings. The P8071 is equipped with both Edison base adapter and quick link connector allowing easy installation in many standard incandescent recessed housings.

## Specifications:

- Satin White finish.
- Diffused polycarbonate lens controls direct glare from the LEDs.
- Easy "Push and Twist" installation with (3) friction spring clips.
- Can be installed in most competitors 6" recessed housings.
- Dimmable to 10% with many Triac/Forward Phase dimmers.
- 725 lumens (delivered).
- Suitable for use in IC or NON-IC Applications.
- Provided with quick link for use with E26 Edison Base adapter.
- This product is not available for sale into the State of California.
- 6" of wire supplied
- ENERGY STAR® qualified
- Meets California Title 24 JA8-2016

## Performance:

Input Power	10.5w
Input Voltage	120 V
Input Frequency	60 Hz
Lumens/LPW	725/69 (LM-79)
CCT	3000 K
CRI	90 CRI
Life (hours)	50,000 (L70/TM-21)
EMI/RFI	FCC Title 47, Part 15, Class B
Min. Start Temp	-30 °C
Max. Operating Temp	30 °C
Warranty	5 year warranty
Labels	cCSAus Wet location listed
	ENERGY STAR® qualified
	Meets California Title 24 JA8-2016

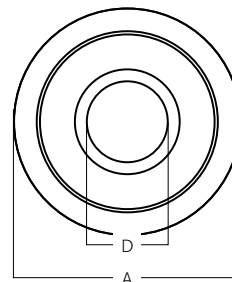
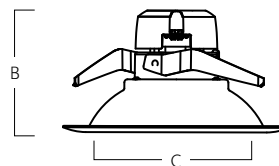
## Images:

### P8071-28-30K



## Dimensions:

- (A) Outside Diameter: 7.75"  
 (B) Height: 4"  
 (C) Inside Diameter: 6.125"  
 (D) Light Emitting Surface (LES): 2.75"



# P8071 SERIES

6IN LED New Construction And Remodel • Wet location listed



## Photometrics:

## P8071-28-30K

ELECTRICAL DATA	P8071-28-30K
Input Voltage	120 V
Input Frequency	60 Hz
Input Current	0.11 A
Power Factor	>0.90
THD	<20%
EMI Filtering	FCC Title 47, Part 15, Class B
Operating Temperature	-30 °C to 30 °C
Dimming	Yes*
Over-voltage, over-current, short-circuit protected	
*See Dimming Notes for more information	

### P8071-28-30K

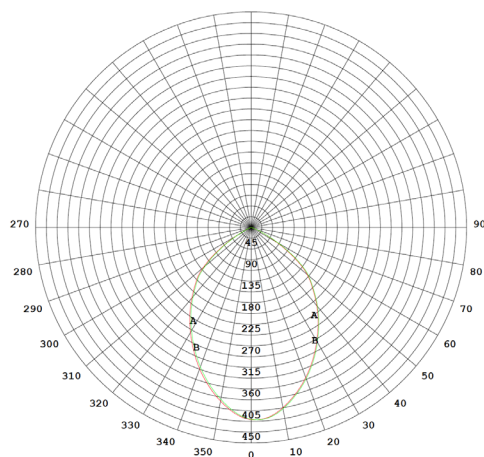
LED Light Engine: 3000 K, 90 CRI

System Wattage: 10.5

Fixture Delivered Lumens: 725

Fixture Efficacy: 69

Spacing Criteria: 1.0



### ZONAL LUMEN SUMMARY

0-10	36.95	36.95	5.63
10-20	98.43	135.4	20.6
20-30	135.1	270.4	41.2
30-40	145.6	416.0	63.4
40-50	133.0	549.0	83.7
50-60	85.75	634.7	96.8
60-70	20.36	655.1	99.9
70-80	0.6937	655.8	100
80-90	0.0678	655.9	100

## P8071-28-30K

### Dimming Notes:

---

P8071 is designed to be compatible with many Triac/Forward Phase controls.

The following is a partial list of known compatible dimmer controls.

### Dimming Controls

---

Lutron AYCL-153P

Lutron TGCL-153P

Leviton 6672

Leviton 6674

Leviton 6681

Dimming capabilities will vary depending on the dimmer control, load, and circuit installation.  
Always refer to dimmer manufacturer instructions or a controls specialist for specific requirements.

Dimmer control brand names where identified above are trade names or registered trademarks of each respective company.