

Revision A:

• MSZ-GL06/09/12/15NA-**U1** and MSY-GL09/12/15NA-**U1** have been added.

Please void OBB732.

PARTS CATALOG

No. OBB732
REVISED EDITION-A

Models

MSZ-GL06NA - U1

MSZ-GL09NA - U1

MSZ-GL12NA - U1

MSZ-GL15NA - U1

MSZ-GL18NA - U1

MSZ-GL24NA - U1

MSY-GL09NA - U1

MSY-GL12NA - U1

MSY-GL15NA - U1

MSY-GL18NA - U1

MSY-GL24NA - U1



MSZ-GL18NA
MSY-GL18NA



CONTENTS

1. RoHS PARTS LIST2

SERVICE MANUAL (OBH732)

NOTE:

RoHS compliant products have <G> mark on the spec name plate.

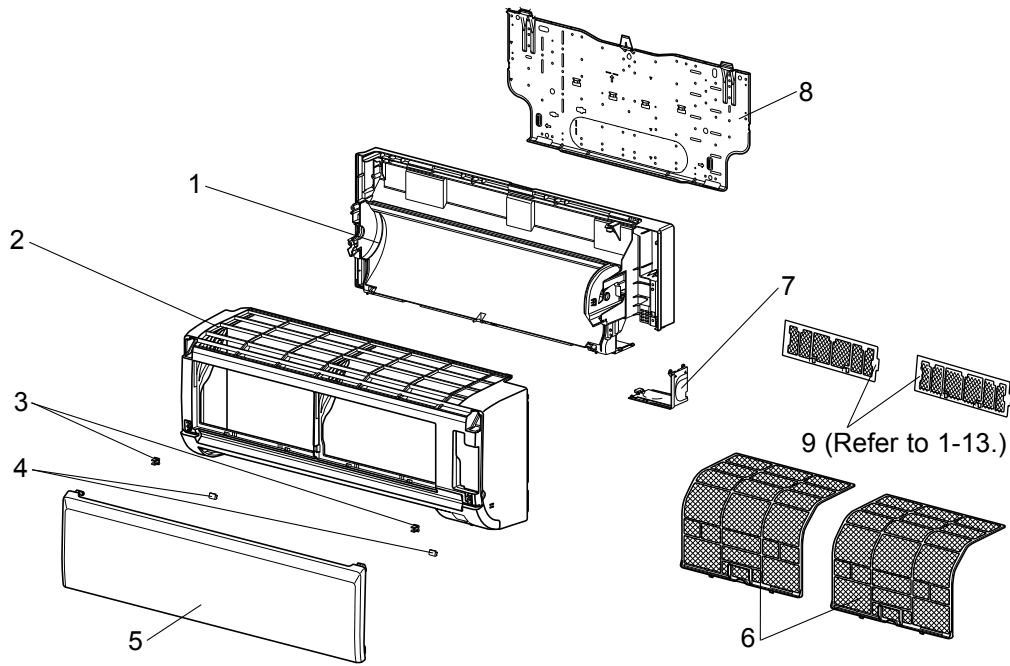
Revision A:

• MSZ-GL06/09/12/15NA-U1 and MSY-GL09/12/15NA-U1 have been added.

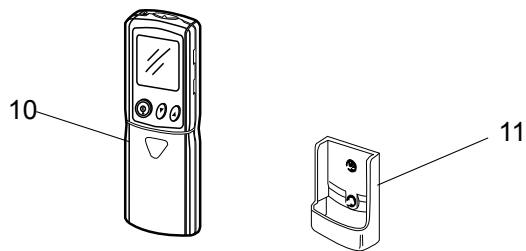
1 RoHS PARTS LIST

**MSZ-GL06NA MSZ-GL09NA MSZ-GL12NA MSZ-GL15NA
MSY-GL09NA MSY-GL12NA MSY-GL15NA**

1-1. INDOOR UNIT STRUCTURAL PARTS



1-2. ACCESSORY AND REMOTE CONTROLLER



RoHS PARTS LIST

1-1. INDOOR UNIT STRUCTURAL PARTS

No.	RoHS	Part No.	Part name	Symbol in Wiring Diagram	Q'ty/unit								Remarks
					MSZ-GL				MSY-GL				
					06 NA - [U1]	09 NA - [U1]	12 NA - [U1]	15 NA - [U1]	09 NA - [U1]	12 NA - [U1]	15 NA - [U1]	15 NA - [U1]	
1	G	U01 A01 234	BOX ASSEMBLY		1	1	1	1	1	1	1	1	
2	G	U01 A02 000	PANEL ASSEMBLY		1	1	1	1	1	1	1	1	Including No. 3,4,5
3	G	U01 A01 142	CATCH		2	2	2	2	2	2	2	2	2 PCS/SET
4	G	U01 A01 067	SCREW CAP		2	2	2	2	2	2	2	2	2 PCS/SET
5	G	U01 A02 010	FRONT PANEL		1	1	1	1	1	1	1	1	
6	G	U01 A01 100	NANO PLATINUM FILTER		2	2	2	2	2	2	2	2	1 PC/SET
7	G	U01 A01 975	CORNER BOX (RIGHT)		1	1	1	1	1	1	1	1	
8	G	U01 A01 970	INSTALLATION PLATE		1	1	1	1	1	1	1	1	
9	G	-	AIR CLEANING FILTER (ANTI-ALLERGY ENZYME FILTER)		2	2	2	2	2	2	2	2	MAC-408FT-E 2 PCS/SET

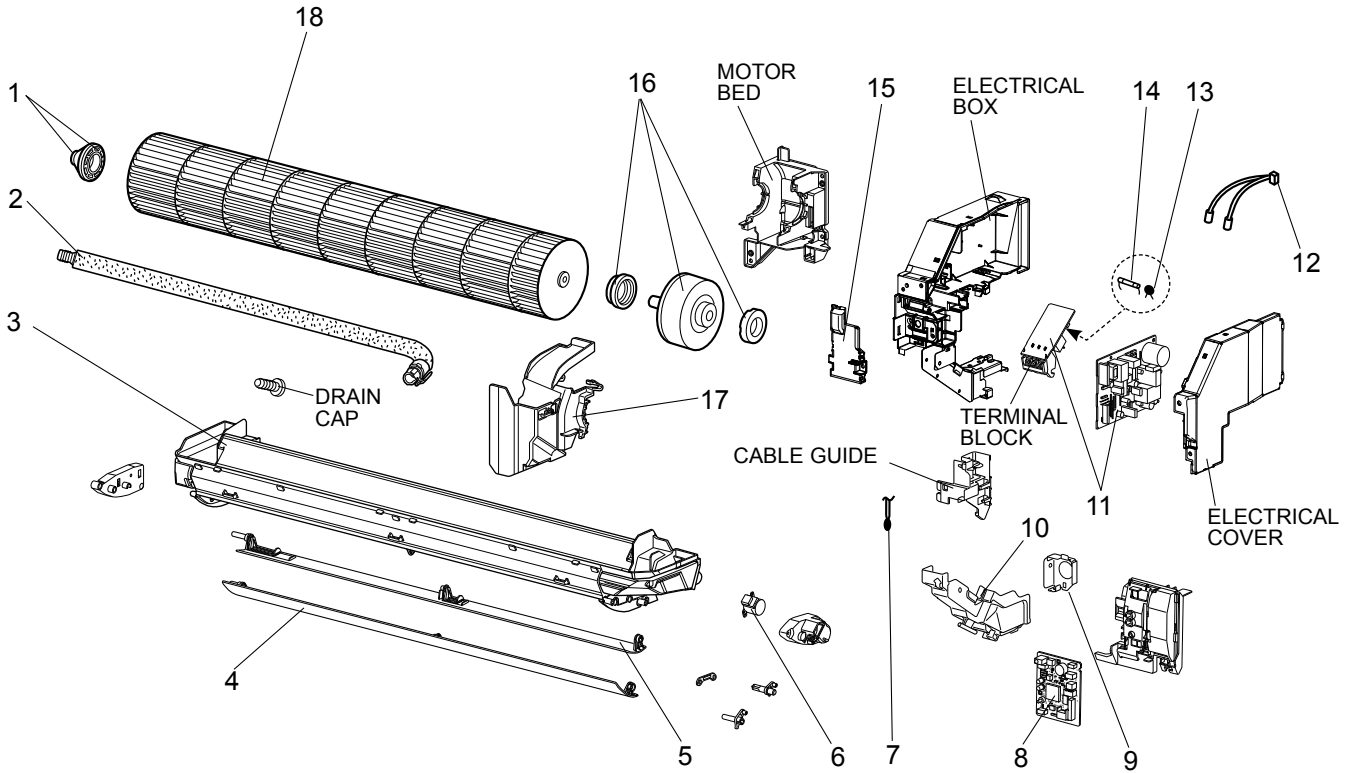
1-2. ACCESSORY AND REMOTE CONTROLLER

10	G	U01 A03 426	REMOTE CONTROLLER		1	1	1	1					KM15E
	G	U01 A04 426	REMOTE CONTROLLER						1	1	1		KM15F
11	G	U01 A01 083	REMOTE CONTROLLER HOLDER		1	1	1	1	1	1	1	1	

RoHS PARTS LIST

MSZ-GL06NA MSZ-GL09NA MSZ-GL12NA MSZ-GL15NA
MSY-GL09NA MSY-GL12NA MSY-GL15NA

1-3. INDOOR UNIT ELECTRICAL PARTS AND FUNCTIONAL PARTS



RoHS PARTS LIST

1-3. INDOOR UNIT ELECTRICAL PARTS AND FUNCTIONAL PARTS

No.	RoHS	Part No.	Part name	Symbol in Wiring Diagram	Q'ty/unit								Remarks
					MSZ-GL				MSY-GL				
					06 NA	09 NA	12 NA	15 NA	09 NA	12 NA	15 NA	15 NA	
					- U1	- U1	- U1	- U1	- U1	- U1	- U1	- U1	
1	G	U01 A01 510	BEARING MOUNT ASSEMBLY		1	1	1	1	1	1	1	1	Including sleeve bearing
2	G	U01 A01 702	DRAIN HOSE		1	1	1	1	1	1	1	1	
3	G	U01 A01 235	NOZZLE ASSEMBLY		1	1	1	1	1	1	1	1	
4	G	U01 A01 040	VANE-UPPER		1	1	1	1	1	1	1	1	
5	G	U01 A01 041	VANE-LOWER		1	1	1	1	1	1	1	1	
6	G	U01 A01 303	VANE MOTOR	MV	1	1	1	1	1	1	1	1	UP & DOWN
7	G	U01 A01 308	ROOM TEMPERATURE THERMISTOR	RT11	1	1	1	1	1	1	1	1	
8	G	U01 A10 452	ELECTRONIC CONTROL P.C. BOARD		1								
	G	U01 A11 452				1							
	G	U01 A12 452					1						
	G	U01 A13 452						1					
	G	U01 A14 452							1				
	G	U01 A15 452								1			
	G	U01 A16 452										1	
9	G	U01 A01 978	CONDUIT PLATE		1	1	1	1	1	1	1	1	
10	G	U01 A01 979	CONDUIT COVER		1	1	1	1	1	1	1	1	
11	G	U01 A01 440	POWER P.C. BOARD ※1		1	1	1	1	1	1	1	1	
12	G	U01 A01 307	INDOOR COIL THERMISTOR	RT12,RT13	1	1	1	1	1	1	1	1	
13	G	U01 A01 385	VARISTOR	NR11	1	1	1	1	1	1	1	1	
14	G	U01 A01 382	FUSE	F11	1	1	1	1	1	1	1	1	T3.15AL250V
15	G	U01 A01 784	V.A. CLAMP		1	1	1	1	1	1	1	1	
16	G	U01 A01 300	INDOOR FAN MOTOR ※2	MF	1	1	1	1	1	1	1	1	RC0J30-□□
17	G	U01 A01 333	MOTOR BAND		1	1	1	1	1	1	1	1	
18	G	U01 A01 302	LINE FLOW FAN		1	1	1	1	1	1	1	1	

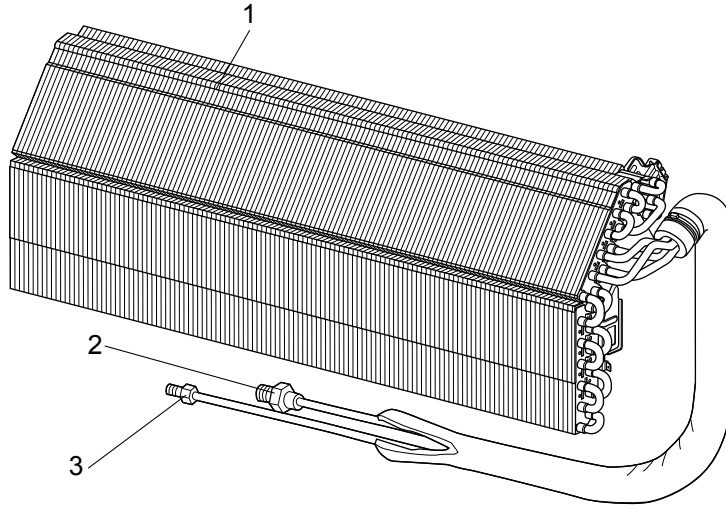
※1 Including TERMINAL BLOCK with TERMINAL P.C. BOARD

※2 Including FAN MOTOR RUBBER MOUNT (2 PCS/SET)

RoHS PARTS LIST

MSZ-GL06NA MSZ-GL09NA MSZ-GL12NA MSZ-GL15NA
MSY-GL09NA MSY-GL12NA MSY-GL15NA

1-4. INDOOR UNIT HEAT EXCHANGER



RoHS PARTS LIST

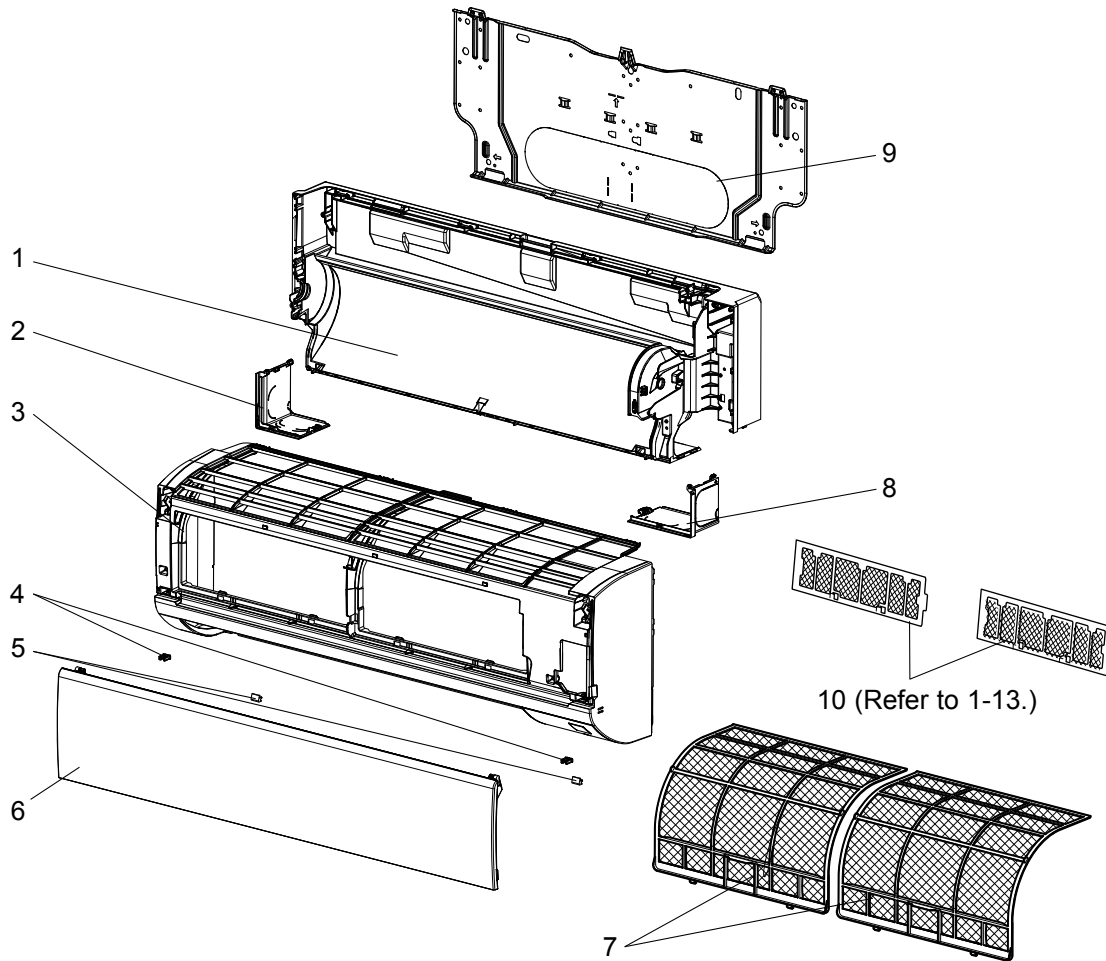
1-4. INDOOR UNIT HEAT EXCHANGER

No.	RoHS	Part No.	Part name	Symbol in Wiring Diagram	Q'ty/unit						Remarks	
					MSZ-GL				MSY-GL			
					06 NA - U1	09 NA - U1	12 NA - U1	15 NA - U1	09 NA - U1	12 NA - U1		15 NA - U1
1	G	U01 A01 620	INDOOR HEAT EXCHANGER		1	1	1		1	1		
	G	U01 A02 620						1			1	
2	G	U01 A01 666	UNION GAS		1	1	1		1	1		ø3/8 (ø9.52)
	G	U01 A02 666	UNION GAS				1				1	ø1/2 (ø12.7)
3	G	U01 A01 667	UNION LIQUID		1	1	1	1	1	1	1	ø1/4 (ø6.35)

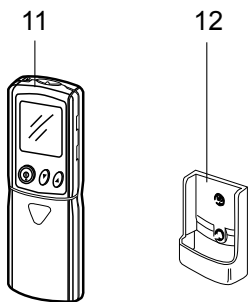
RoHS PARTS LIST

MSZ-GL18NA MSY-GL18NA

1-5. INDOOR UNIT STRUCTURAL PARTS



1-6. ACCESSORY AND REMOTE CONTROLLER



RoHS PARTS LIST

1-5. INDOOR UNIT STRUCTURAL PARTS

No.	RoHS	Part No.	Part name	Symbol in Wiring Diagram	Q'ty/unit		Remarks
					MSZ-GL18NA- U1	MSY-GL18NA- U1	
1	G	E12 N87 234	BOX ASSEMBLY		1	1	
2	G	E12 N87 976	CORNER BOX LEFT		1	1	
3	G	E12 N94 000	PANEL ASSEMBLY		1	1	Including No. 4,5,6
4	G	E12 F95 142	CATCH		2	2	2 PCS/SET
5	G	E12 913 067	SCREW CAP		2	2	2 PCS/SET
6	G	E12 N87 010	FRONT PANEL		1	1	
7	G	E12 N94 100	AIR FILTER (NANO PLATINUM FILTER)		2	2	1 PC/SET
8	G	E12 N87 975	CORNER BOX RIGHT		1	1	
9	G	E12 N87 970	INSTALLATION PLATE		1	1	
10	G	-	AIR CLEANING FILTER (ANTI-ALLERGY ENZYME FILTER)		2	2	MAC-408FT-E 2 PCS/SET

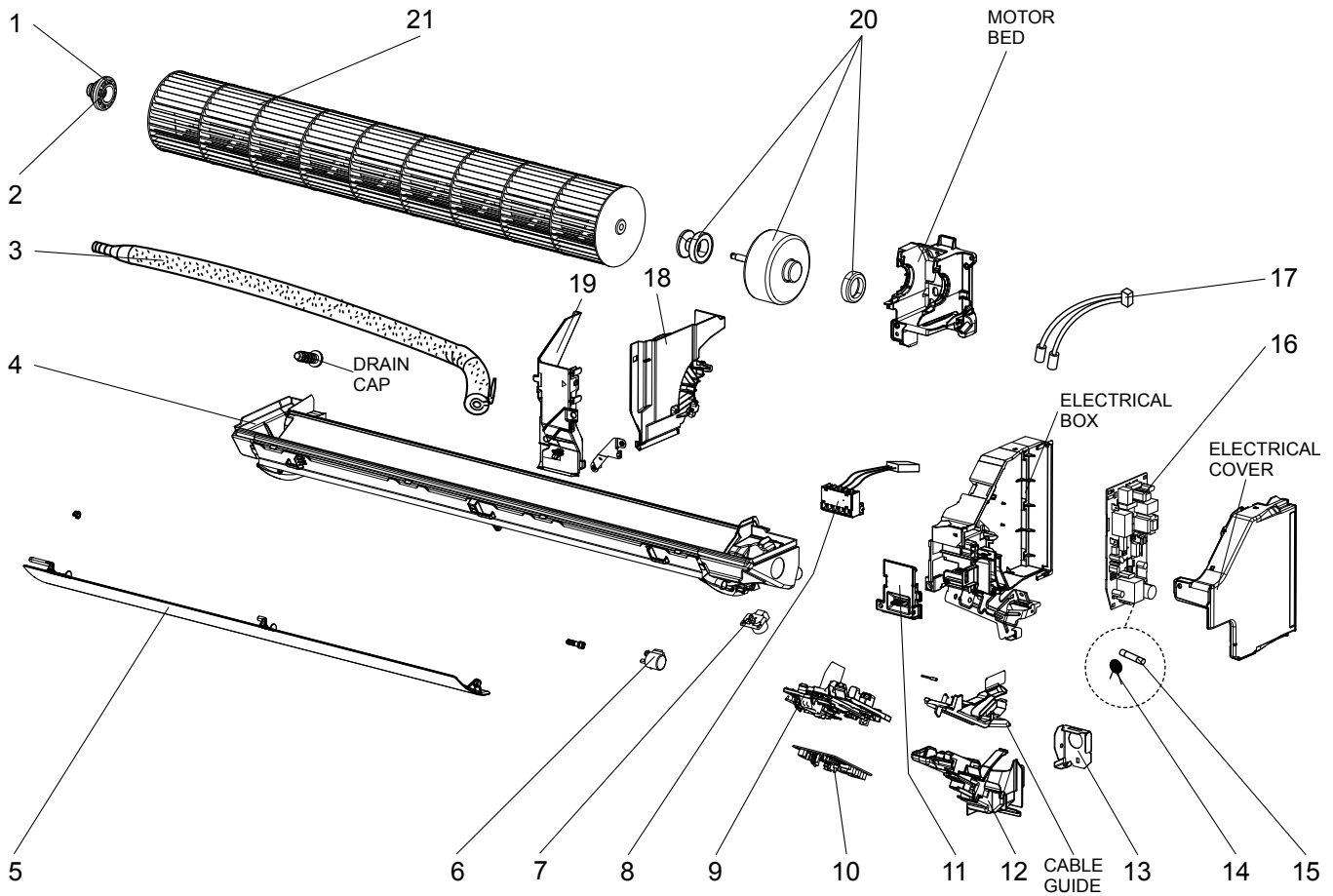
1-6. ACCESSORY AND REMOTE CONTROLLER

11	G	E12 N91 426	REMOTE CONTROLLER		1		KM15A
	G	E12 N94 426	REMOTE CONTROLLER			1	KM15B
12	G	E12 527 083	REMOTE CONTROLLER HOLDER		1	1	

RoHS PARTS LIST

MSZ-GL18NA MSY-GL18NA

1-7. INDOOR UNIT ELECTRICAL PARTS AND FUNCTIONAL PARTS



RoHS PARTS LIST

1-7. INDOOR UNIT ELECTRICAL PARTS AND FUNCTIONAL PARTS

No.	RoHS	Part No.	Part name	Symbol in Wiring Diagram	Q'ty/unit		Remarks
					MSZ-GL18NA- U1	MSY-GL18NA- U1	
1	G	E12 751 509	BEARING MOUNT		1	1	
2	G	E12 001 504	SLEEVE BEARING		1	1	
3	G	E12 897 702	DRAIN HOSE		1	1	
4	G	E12 N94 235	NOZZLE ASSEMBLY		1	1	
5	G	E12 N87 040	HORIZONTAL VANE		1	1	
6	G	E12 N87 303	VANE MOTOR (HORIZONTAL)	MV1	1	1	UP & DOWN
7	G	E12 J44 303	VANE MOTOR (VERTICAL)	MV2	1	1	RIGHT & LEFT
8	G	E12 N94 375	TERMINAL BLOCK ASSEMBLY ※2	TB	1	1	
9	G	E12 N87 095	CONTROL P.C. BOARD HOLDER ASSEMBLY		1	1	
10	G	E12 N91 452	ELECTRONIC CONTROL P.C. BOARD ※1		1		
	G	E12 N94 452				1	
11	G	E12 N87 784	V.A. CLAMP		1	1	
12	G	E12 N94 979	CONDUIT COVER		1	1	
13	G	E12 N94 978	CONDUIT PLATE		1	1	
14	G	E12 B75 385	VARISTOR	NR11	1	1	
15	G	E12 A49 382	FUSE	F11	1	1	T3.15AL250V
16	G	E12 N94 440	POWER P.C. BOARD		1	1	
17	G	E12 N87 307	INDOOR COIL THERMISTOR	RT12,RT13	1	1	
18	G	E12 N87 333	MOTOR BAND		1	1	
19	G	E12 N87 541	WATER COVER		1	1	
20	G	E12 J44 300	INDOOR FAN MOTOR ※3	MF	1	1	RC0J30-□□
21	G	E12 N87 302	LINE FLOW FAN		1	1	

※1 Including ROOM TEMPERATURE THERMISTOR (RT11)

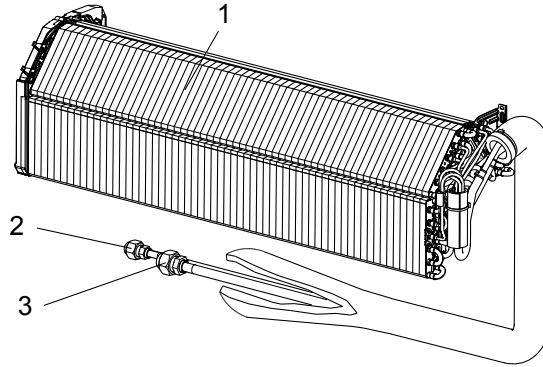
※2 Including THERMAL FUSE (F12)

※3 Including FAN MOTOR RUBBER MOUNT (2 PCS/SET)

RoHS PARTS LIST

MSZ-GL18NA MSY-GL18NA

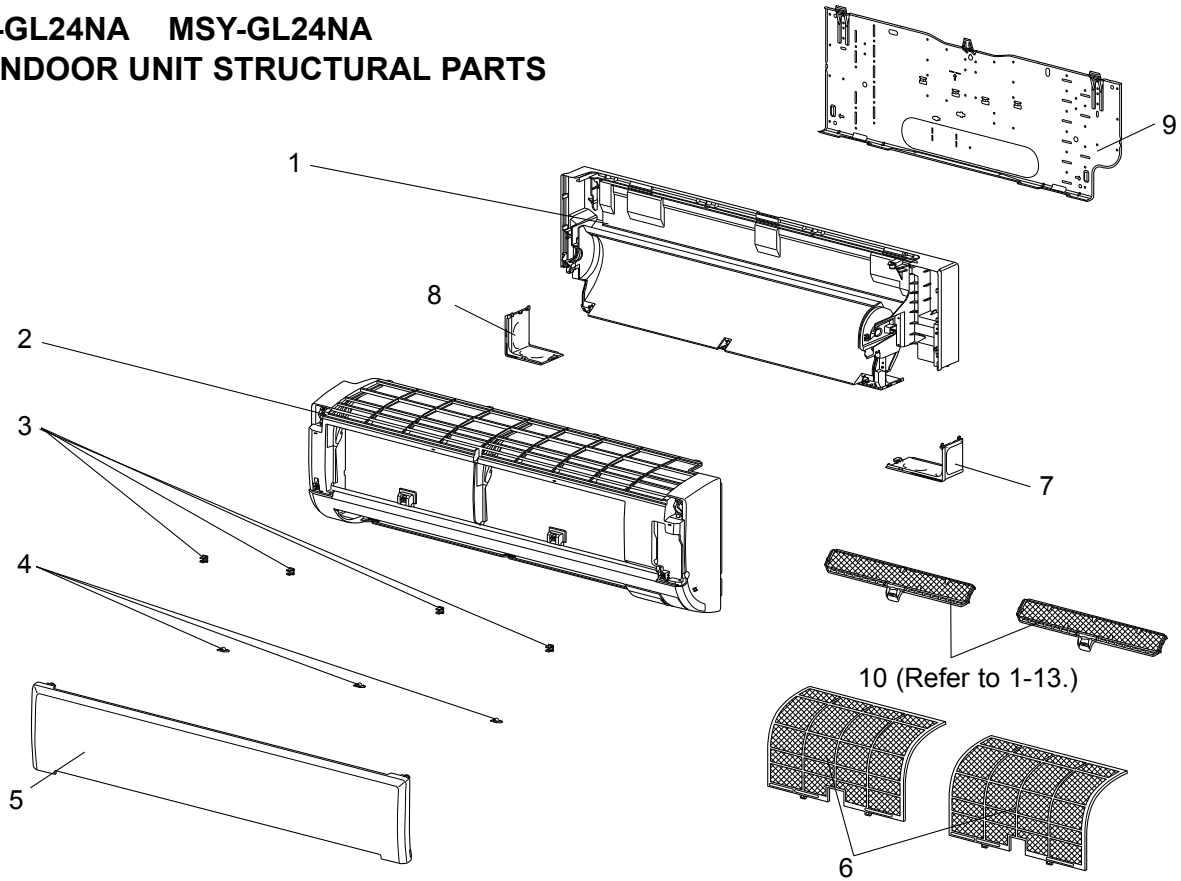
1-8. INDOOR UNIT HEAT EXCHANGER



No.	RoHS	Part No.	Part name	Symbol in Wiring Diagram	Q'ty/unit		Remarks
					MSZ-GL18NA- U1	MSY-GL18NA- U1	
1	G	E12 N91 620	INDOOR HEAT EXCHANGER		1	1	
2	G	E12 151 667	UNION (LIQUID)		1	1	ø1/4 (ø6.35)
3	G	E12 179 667	UNION (GAS)		1	1	ø1/2 (ø12.7)

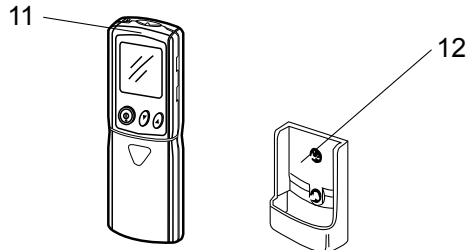
RoHS PARTS LIST

MSZ-GL24NA MSY-GL24NA 1-9. INDOOR UNIT STRUCTURAL PARTS



No.	RoHS	Part No.	Part name	Symbol in Wiring Diagram	Q'ty/unit		Remarks
					MSZ-GL24NA - [U1]	MSY-GL24NA - [U1]	
1	G	E12 J94 234	BOX ASSEMBLY		1	1	
2	G	E12 T16 000	PANEL ASSEMBLY		1	1	Including No. 3,4,5
3	G	E12 408 142	CATCH		4	4	4 PCS/SET
4	G	E12 F28 067	SCREW CAP		3	3	3 PCS/SET
5	G	E12 R19 010	FRONT PANEL		1	1	
6	G	E12 F28 100	AIR FILTER (NANO PLATINUM FILTER)		2	2	1 PC/SET
7	G	E12 F28 975	CORNER BOX (RIGHT)		1	1	
8	G	E12 F28 976	CORNER BOX (LEFT)		1	1	
9	G	E12 F28 970	INSTALLATION PLATE		1	1	
10	G	-	AIR CLEANING FILTER (ELECTROSTATIC ANTI-ALLERGY ENZYME FILTER)		2	2	MAC-2310FT-E 2 PCS/SET

1-10. ACCESSORY AND REMOTE CONTROLLER

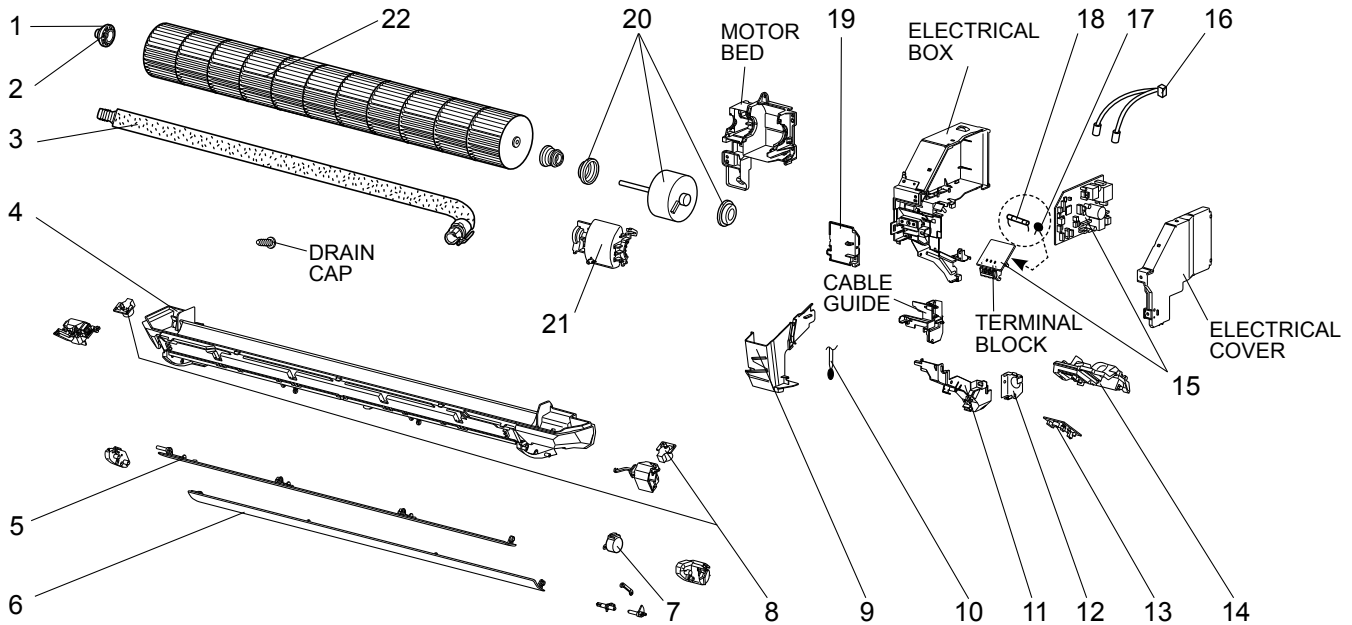


11	G	E12 T16 426	REMOTE CONTROLLER		1		KM15H
	G	E12 T17 426	REMOTE CONTROLLER			1	KM15J
12	G	E12 527 083	REMOTE CONTROLLER HOLDER		1	1	

RoHS PARTS LIST

MSZ-GL24NA MSY-GL24NA

1-11. INDOOR UNIT ELECTRICAL PARTS AND FUNCTIONAL PARTS



No.	ROHS	Part No.	Part name	Symbol in Wiring Diagram	Q'ty/unit		Remarks
					MSZ-GL24NA - U1	MSY-GL24NA - U1	
1	G	E12 751 509	BEARING MOUNT		1	1	
2	G	E12 001 504	SLEEVE BEARING		1	1	
3	G	E12 408 702	DRAIN HOSE		1	1	
4	G	E12 F76 235	NOZZLE ASSEMBLY		1	1	
5	G	E12 F76 040	VANE (UPPER)		1	1	
6	G	E12 F76 041	VANE (LOWER)		1	1	
7	G	E12 C33 303	VANE MOTOR (HORIZONTAL)	MV1	1	1	UP & DOWN
8	G	E12 C32 303	VANE MOTOR (VERTICAL)	MV2	2	2	RIGHT & LEFT
9	G	E12 F28 541	WATER CUT		1	1	
10	G	E12 C32 308	ROOM TEMPERATURE THERMISTOR	RT11	1	1	
11	G	E12 F76 979	CONDUIT COVER		1	1	
12	G	E12 F76 978	CONDUIT PLATE		1	1	
13	G	E12 F28 468	POWER MONITOR RECEIVER SW P.C. BOARD		1	1	
14	G	E12 F28 095	POWER MONITOR RECEIVER HOLDER		1	1	
15	G	E12 T16 452	ELECTRONIC CONTROL P.C. BOARD *1		1		
	G	E12 T17 452	ELECTRONIC CONTROL P.C. BOARD *1			1	
16	G	E12 F28 307	INDOOR COIL THERMISTOR	RT12,RT13	1	1	
17	G	E12 B75 385	VARISTOR	NR11	1	1	
18	G	E12 A49 382	FUSE	F11	1	1	T3.15AL250V
19	G	E12 F76 784	V.A. CLAMP		1	1	
20	G	E12 F28 300	INDOOR FAN MOTOR *2	MF	1	1	RC0J56-□□
21	G	E12 F28 333	MOTOR BAND		1	1	
22	G	E12 F28 302	LINE FLOW FAN		1	1	

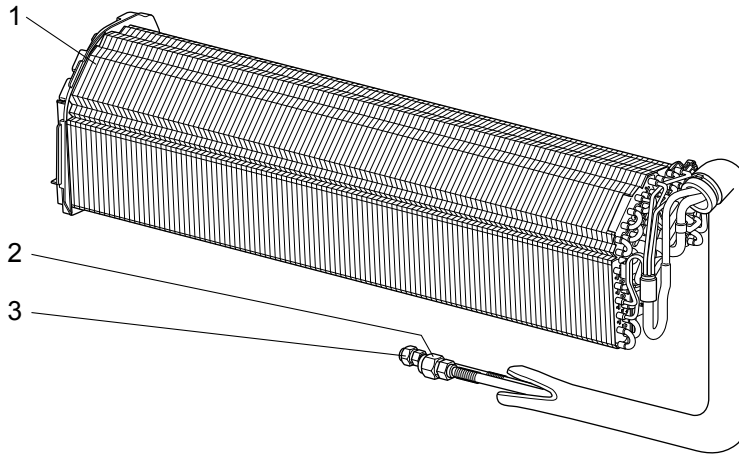
*1 Including TERMINAL BLOCK with TERMINAL P.C. BOARD

*2 Including FAN MOTOR RUBBER MOUNT (2 PCS/SET)

RoHS PARTS LIST

MSZ-GL24NA MSY-GL24NA

1-12. INDOOR UNIT HEAT EXCHANGER



No.	RoHS	Part No.	Part name	Symbol in Wiring Diagram	Q'ty/unit		Remarks
					MSZ-GL24NA - U1	MSY-GL24NA - U1	
1	G	E12 T16 620	INDOOR HEAT EXCHANGER		1	1	
2	G	E12 527 666	UNION (GAS)		1	1	ø5/8 (ø15.88)
3	G	E12 815 666	UNION (LIQUID)		1	1	ø3/8 (ø9.52)

RoHS PARTS LIST

1-13. AIR CLEANING FILTER

Every 3 months:

- Remove dirt by a vacuum cleaner.

When dirt cannot be removed by vacuum cleaning:

- Soak the filter and its frame in lukewarm water before rinsing it.
- After washing, dry it well in shade.

Every year:

- Replace it with a new air cleaning filter for best performance.

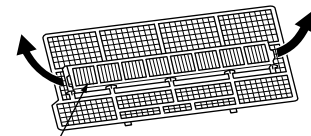
NOTE 1: Clean the filters regularly for best performance and to reduce power consumption.

NOTE 2: Dirty filters cause condensation in the air conditioner which will contribute to the growth of fungi such as mold. It is therefore recommended to clean air filters every 2 weeks.

(ANTI-ALLERGY ENZYME FILTER)

Model	Part No.
MSZ-GL06NA	MAC-408FT-E
MSZ-GL09NA	
MSZ-GL12NA	
MSZ-GL15NA	
MSZ-GL18NA	
MSY-GL09NA	
MSY-GL12NA	
MSY-GL15NA	
MSY-GL18NA	

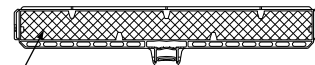
Pull to remove from the air filter



Air cleaning filter
(Blue bellows type)

(ELECTROSTATIC ANTI-ALLERGY ENZYME FILTER)

Model	Part No.
MSZ-GL24NA	MAC-2310FT-E
MSY-GL24NA	



Air cleaning filter
(Electrostatic anti-allergy enzyme filter)

MITSUBISHI ELECTRIC CORPORATION

HEAD OFFICE: TOKYO BLDG., 2-7-3, MARUNOUCHI, CHIYODA-KU, TOKYO 100-8310, JAPAN

© Copyright 2015 MITSUBISHI ELECTRIC CORPORATION
Distributed in Nov. 2015 No. OBB732 REVISED EDITION-A
Distributed in Sep. 2015 No. OBB732
Made in Japan

New publication, effective Nov. 2015
Specifications are subject to change without notice.