

## Adjustable Air Handler Base ( Foldable )

### STRUCTURES

#### FRAME:

14 GAUGE ASTM A-653 HOT-DIPPED  
GALVANIZED STEEL SHEET

#### TUBING:

16 GAUGE HOT-DIPPED GALVANIZED STEEL TUBE

### SPECIFICATIONS

MODEL	WIDTH(W)	HEIGHT(H)	DEPTH(D)	RATED LOAD	BOX QTY	PALLET QTY
AHS-18HD-26	16-26"	18"	22"	500 LBS	1	40
AHS-24HD-26	16-26"	24"	22"	500 LBS	1	40
AHS-36HD-26	16-26"	36"	22"	500 LBS	1	20

CUSTOM HEIGHTS AVAILABLE UPON REQUEST

### FEATURES

NO ASSEMBLY REQUIRED

FOLDABLE STRUCTURE DESIGN (PATENT PENDING)

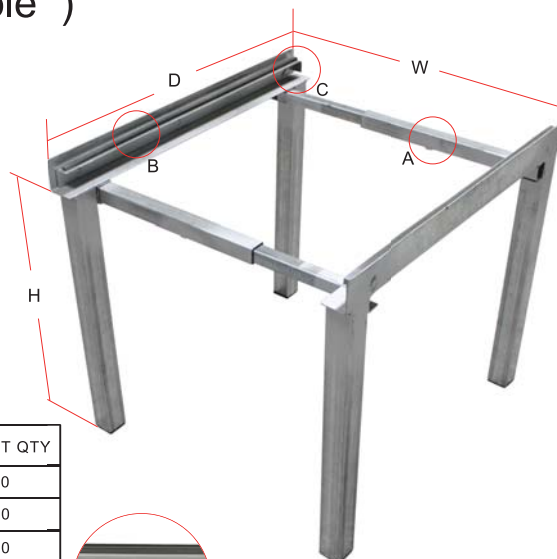
STANDARD DEPTH 22"

ADJUSTABLE WIDTH FITS MOST AIR HANDLER UNITS

BUILT-IN FILTER RACK FITS STANDARD 1" FILTERS

RUBBER STRIPS INCLUDED TO MINIMIZE VIBRATION

PLASTIC CAPS IN LOWER LEG OPENINGS



A: MOUNTING PIN DESIGNED TO FIX THE WIDTH AND STABILIZE THE BASE



B: RUBBER STRIPS INCLUDED TO MINIMIZE VIBRAION



C: FILTER RACK WITH STOPPER TO FIX FILTERS WELL



D: FOLDABLE STRUCTURE DESIGN TO SAVE SHIPPING AND STORAGE SPACE  
(PATENT PENDING)

JOB NAME:
LOCATION:
ARCHITECT:
ENGINEER:
CONTRACTOR:
<p>CONTACT SMART ELECTRIC FOR ADDITIONAL INFOMRATION OR WITH SPECIAL REQUIREMENTS</p> <p>12201 NW 107TH AVENUE MEDLEY, FL33178, USA TOLL FREE: 1 866 591 9898 FAX: 305 500 9896 WWW.SMARTELECTRICUSA.COM</p>

AHS

AIR HANDLER STAND

PRODUCT SPECIFICATIONS

NOTE: ALL DRAWINGS SUBJECT TO CHANGE WITHOUT PRIOR NOTICE



DRAWN BY:

DATE:

SCALE: NOT TO SCALE

DRAWN NO.

CHECKED BY:

DATE:

REVISION: C

AHS003