



Submittal Data Sheet

0.75-Ton Wall Mounted Unit

FTXN09NMVJURXN09NMVJU

FEATURES

- IR controller included
- Titanium apatite photocatalytic air purification filter (option)
- Hot start technology
- Auto-restart (after power failure)

BENEFITS

- Quiet operation
- Operating Range - Cooling (50° - 114.8°)
- Operating Range - Heating (5° - 64.4°)
- 10 Year limited parts warranty with online registration
- 5 Year limited parts warranty for commercial applications

INDOOR UNIT



OUTDOOR UNIT





Submittal Data Sheet

0.75-Ton Wall Mounted Unit

FTXN09NMVJURXN09NMVJU

SYSTEM PERFORMANCE

Indoor Unit Model No.	FTXN09NMVJU	Indoor Unit Name:	15 SEER HP DUCTLESS ID 3/4 TON
Outdoor Unit Model No.	RXN09NMVJU	Outdoor Unit Name:	15 SEER HP DUCTLESS OD 3/4 TON
Rated Cooling Capacity (Btu/hr):	9,000	Rated Cooling Conditions:	Indoor (°F DB/WB): 80 / 67 Ambient (°F DB/WB): 95 / 75
Sensible Capacity (Btu/hr):	8,010	Rated Piping Length(ft):	25
Max/Min Cooling Capacity (Btu/hr):	10,200 / 4,400	Rated Height Difference (ft):	39.40
Cooling Input Power (kW):	0.870	Rated Heating Conditions:	Indoor (°F DB/WB): 70 / 60 Ambient (°F DB/WB): 47 / 43
SEER (Non-Ducted/Ducted):	15.00 /	HSPF (Non-Ducted/Ducted):	8.2 /
EER (Non-Ducted/Ducted):	10.40 /	Heating COP (Non-Ducted/Ducted):	3.9 /
Rated Heating Capacity (Btu/hr):	9,000		
Max/Min Heating Capacity (Btu/hr):	10,000 / 4,400		
Heating Input Power (kW):	0.68		

SYSTEM DETAILS

Refrigerant Type:	R-410A	Cooling Operation Range (°F DB):	50 - 115
Holding Refrigerant Charge (lbs):	1.5	Heating Operation Range (°F WB):	5 - 64
Additional Charge (lb/ft):	0.01	Max. Pipe Length (Vertical) (ft):	49
Pre-charge Piping (Length) (ft):	32	Cooling Range w/Baffle (°F DB):	-
Max. Pipe Length (Total) (ft):	49	Heating Range w/Baffle (°F WB):	-
Max Height Separation (Ind to Ind ft):	39		

Submittal Data Sheet

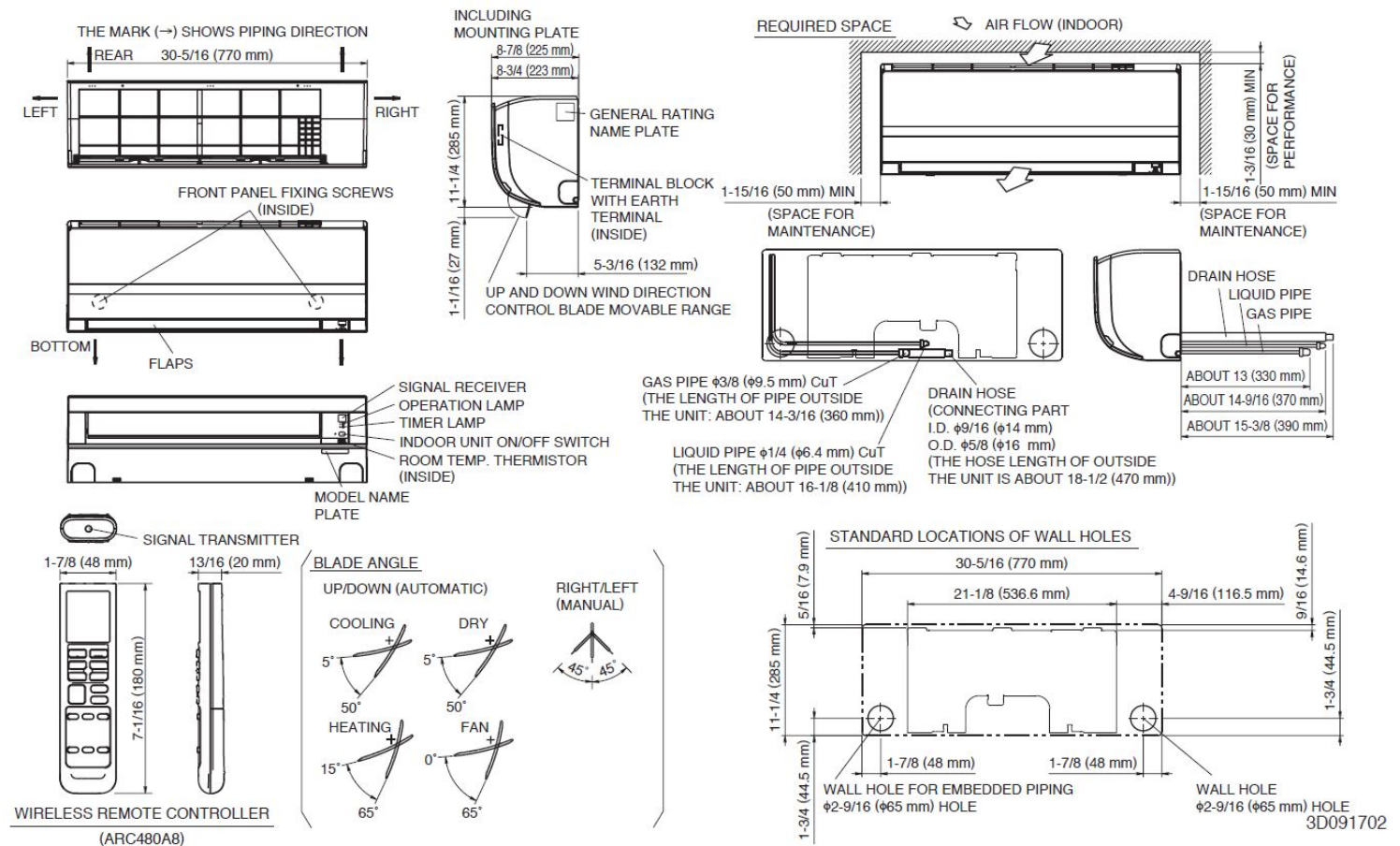
0.75-Ton Wall Mounted Unit

FTXN09NMVJURXN09NMVJU

INDOOR UNIT DETAILS

Power Supply (V/Hz/Ph):	208-230 / 60 / 1	Airflow Rate (H/M/L/SL) (CFM):	403/286/219/145
Power Supply Connections:	See Outdoor Unit for Electrical Specs	Moisture Removal (Gal/hr):	0.3
Min. Circuit Amps MCA (A):		Gas Pipe Connection (inch):	3/8
Max Overcurrent Protection (MOP) (A):		Liquid Pipe Connection (inch):	1/4
Dimensions (HxWxD) (in):	11-1/4 x 30-5/16 x 8-3/4	Condensate Connection (inch):	5/8
Panel (HxWxD) (in):		Sound Pressure (H/M/L/SL) (dBA):	43/35/27/19
Net Weight (lb):	18	Sound Power Level (dBA):	
Panel Weight (lb):		Ext. Static Pressure (Rated/Max) (inWg):	/

DIMENSIONAL DRAWING - INDOOR UNIT



Submittal Data Sheet

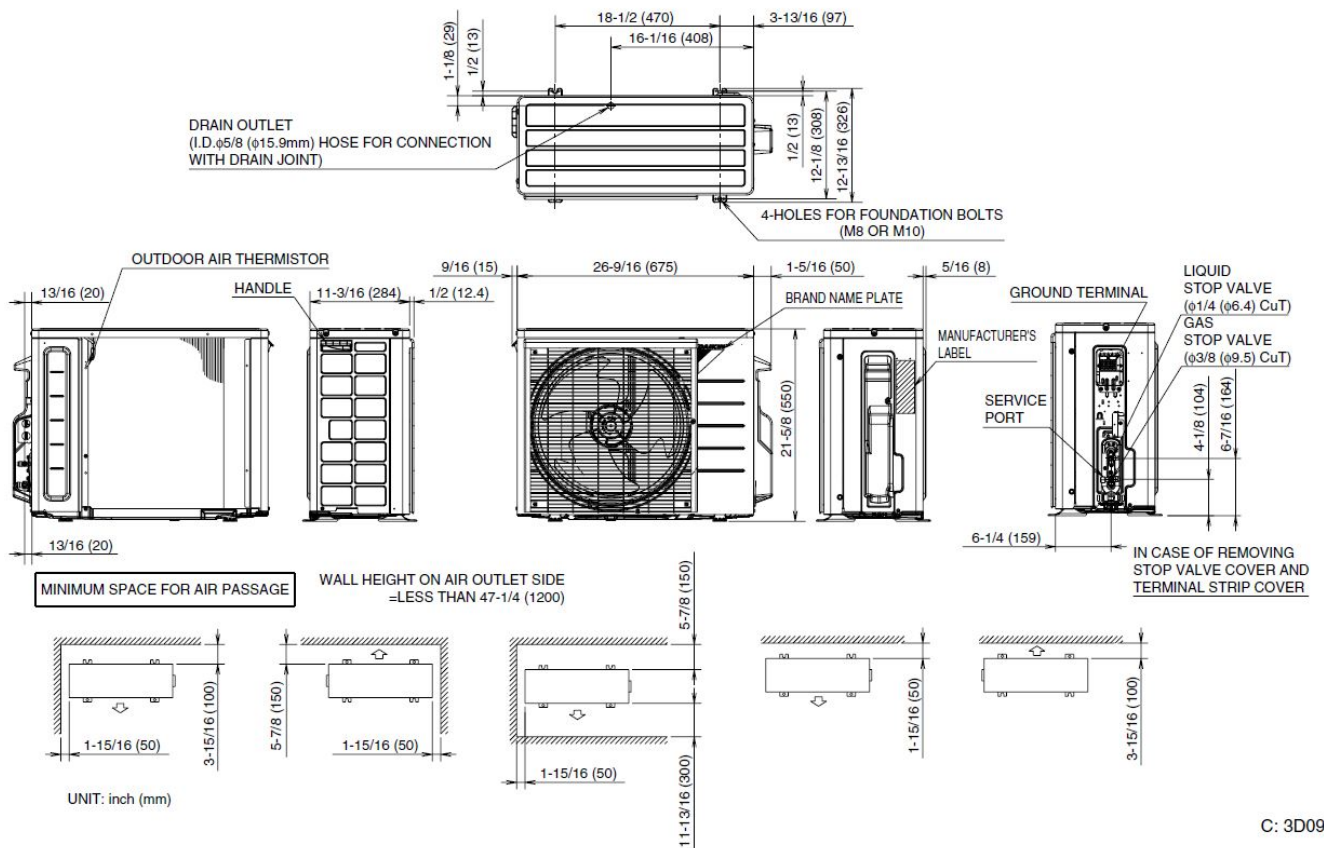
0.75-Ton Wall Mounted Unit

FTXN09NMVJURXN09NMVJU

OUTDOOR UNIT DETAILS

Power Supply (V/Hz/Ph):	208-230 / 60 / 1	Compressor Type:	Inverter
Power Supply Connections:	L1, L2, Ground	Capacity Control Range (%):	-
Min. Circuit Amps MCA (A):	10.10	Airflow Rate (H) (CFM):	1,243
Max Overcurrent Protection (MOP) (A):	15.00	Gas Pipe Connection (inch):	3/8
Max Starting Current MSC(A):		Liquid Pipe Connection (inch):	1/4
Rated Load Amps RLA(A):	8.5	Sound Pressure (H) (dBA):	49
Dimensions (HxWxD) (in):	21-5/8 x 26-9/16 x 11-3/16	Sound Power Level (dBA):	
Net Weight (lb):	55		

DIMENSIONAL DRAWING - OUTDOOR UNIT



C: 3D092206



Submittal Data Sheet

1.0-Ton Wall Mounted Unit

FTXN12NMVJURXN12NMVJU

FEATURES

- IR controller included
- Titanium apatite photocatalytic air purification filter (option)
- Hot start technology
- Auto-restart (after power failure)

BENEFITS

- Quiet operation
- Operating Range - Cooling (50° - 114.8°)
- Operating Range - Heating (5° - 64.4°)
- 10 Year limited parts warranty with online registration
- 5 Year limited parts warranty for commercial applications

INDOOR UNIT



OUTDOOR UNIT





Submittal Data Sheet

1.0-Ton Wall Mounted Unit

FTXN12NMVJURXN12NMVJU

SYSTEM PERFORMANCE

Indoor Unit Model No.	FTXN12NMVJU	Indoor Unit Name:	15 SEER HP DUCTLESS ID 1 TON
Outdoor Unit Model No.	RXN12NMVJU	Outdoor Unit Name:	15 SEER HP DUCTLESS OD 1 TON
Rated Cooling Capacity (Btu/hr):	12,000	Rated Cooling Conditions:	Indoor (°F DB/WB): 80 / 67 Ambient (°F DB/WB): 95 / 75
Sensible Capacity (Btu/hr):	9,780	Rated Piping Length(ft):	25
Max/Min Cooling Capacity (Btu/hr):	13,000 / 4,400	Rated Height Difference (ft):	39.00
Cooling Input Power (kW):	1.140	Rated Heating Conditions:	Indoor (°F DB/WB): 70 / 60 Ambient (°F DB/WB): 47 / 43
SEER (Non-Ducted/Ducted):	15.00 /	HSPF (Non-Ducted/Ducted):	8.2 /
EER (Non-Ducted/Ducted):	10.50 /	Heating COP (Non-Ducted/Ducted):	3.9 /
Rated Heating Capacity (Btu/hr):	12,000		
Max/Min Heating Capacity (Btu/hr):	14,000 / 4,400		
Heating Input Power (kW):	0.91		

SYSTEM DETAILS

Refrigerant Type:	R-410A	Cooling Operation Range (°F DB):	50 - 115
Holding Refrigerant Charge (lbs):	2.1	Heating Operation Range (°F WB):	5 - 64
Additional Charge (lb/ft):	0.01	Max. Pipe Length (Vertical) (ft):	49
Pre-charge Piping (Length) (ft):	32	Cooling Range w/Baffle (°F DB):	-
Max. Pipe Length (Total) (ft):	49	Heating Range w/Baffle (°F WB):	-
Max Height Separation (Ind to Ind ft):	39		

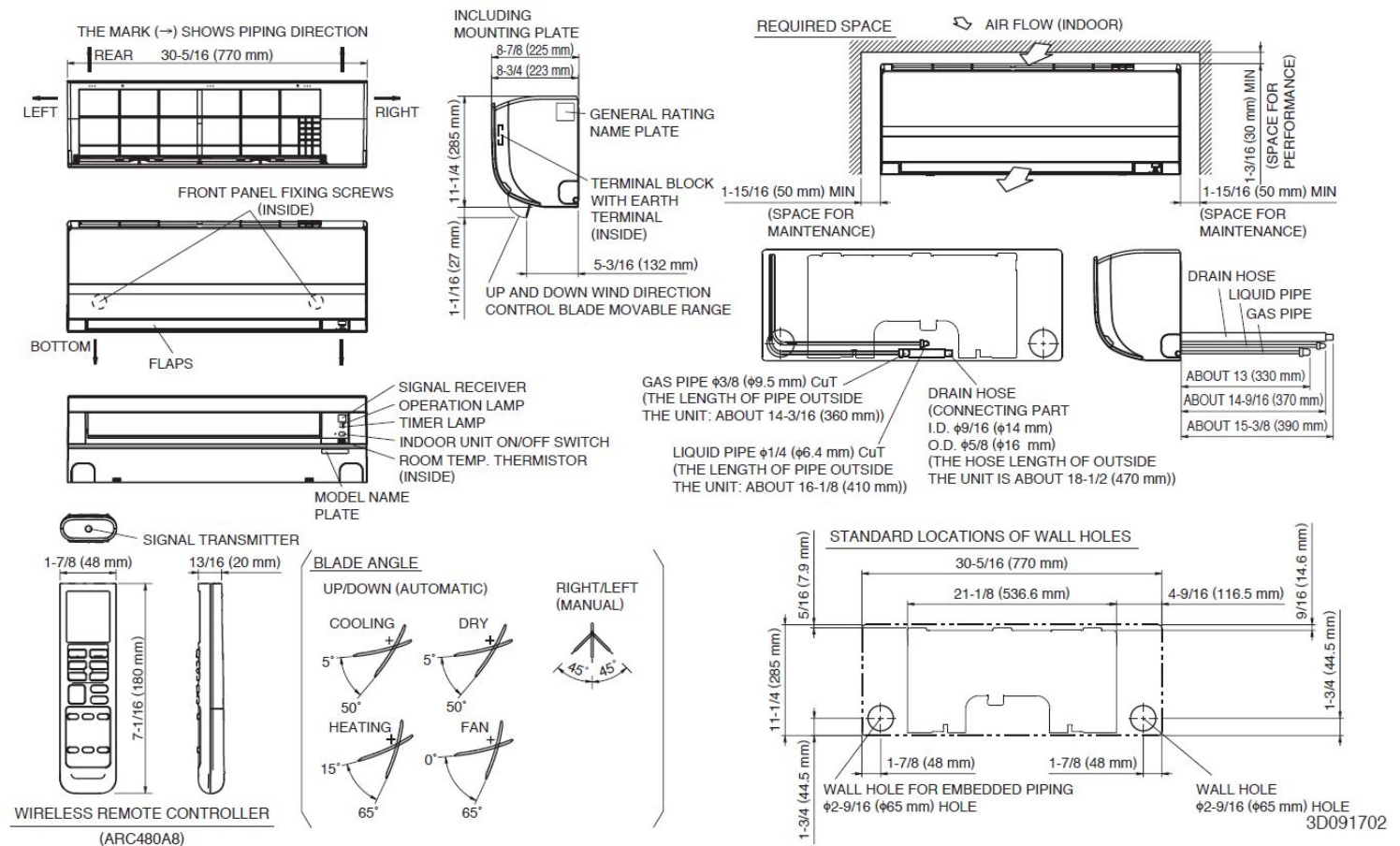
Submittal Data Sheet

1.0-Ton Wall Mounted Unit
FTXN12NMVJURXN12NMVJU

INDOOR UNIT DETAILS

Power Supply (V/Hz/Ph):	208-230 / 60 / 1	Airflow Rate (H/M/L/SL) (CFM):	424/300/247/141
Power Supply Connections:	See Outdoor Unit for Electrical Specs	Moisture Removal (Gal/hr):	0.5
Min. Circuit Amps MCA (A):		Gas Pipe Connection (inch):	3/8
Max Overcurrent Protection (MOP) (A):		Liquid Pipe Connection (inch):	1/4
Dimensions (HxWxD) (in):	11-1/4 x 30-5/16 x 8-3/4	Condensate Connection (inch):	5/8
Panel (HxWxD) (in):		Sound Pressure (H/M/L/SL) (dBA):	44/36/30/19
Net Weight (lb):	18	Sound Power Level (dBA):	
Panel Weight (lb):		Ext. Static Pressure (Rated/Max) (inWg):	/

DIMENSIONAL DRAWING - INDOOR UNIT





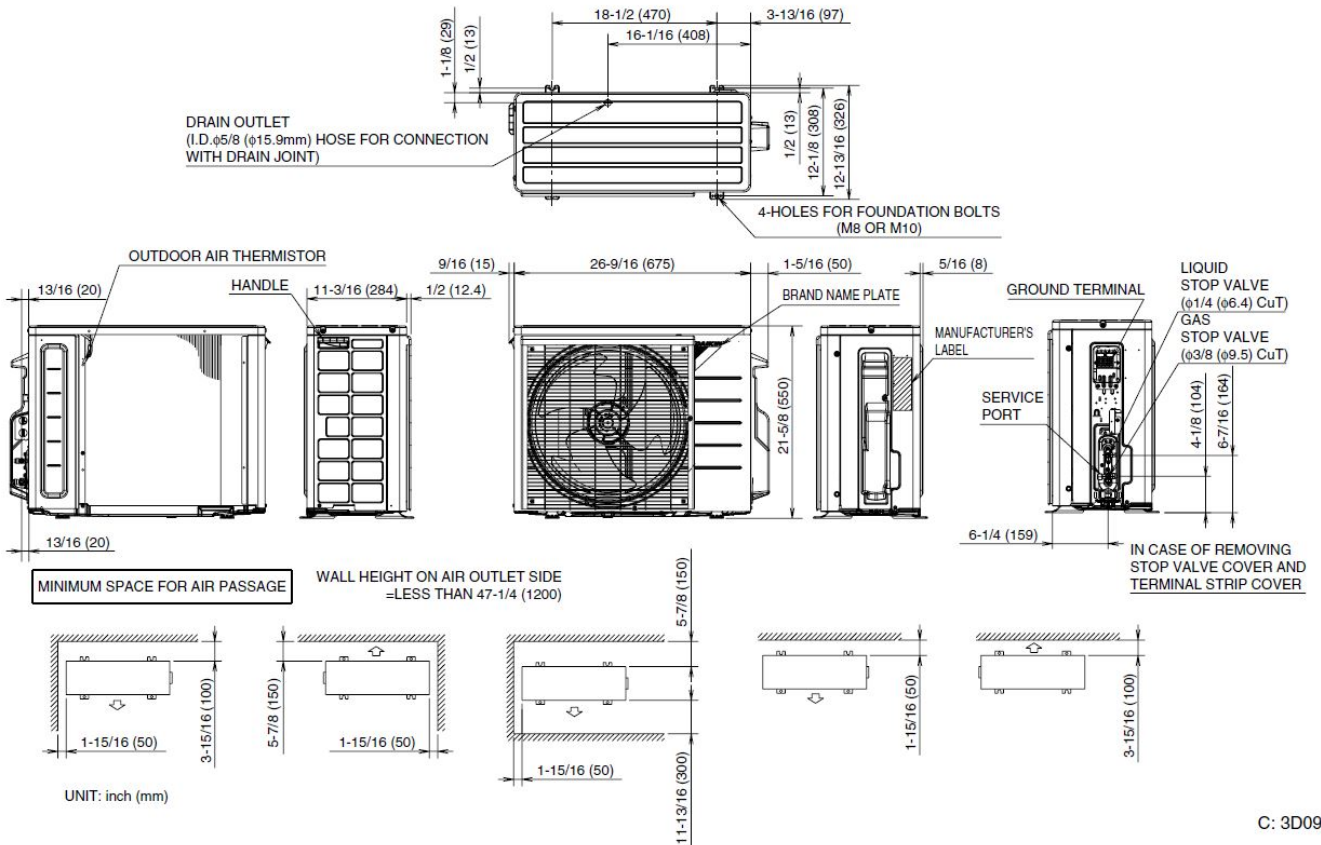
Submittal Data Sheet

1.0-Ton Wall Mounted Unit
FTXN12NMVJURXN12NMVJU

OUTDOOR UNIT DETAILS

Power Supply (V/Hz/Ph):	208-230 / 60 / 1	Compressor Type:	Inverter
Power Supply Connections:	L1, L2, Ground	Capacity Control Range (%):	-
Min. Circuit Amps MCA (A):	10.10	Airflow Rate (H) (CFM):	1,236
Max Overcurrent Protection (MOP) (A):	15.00	Gas Pipe Connection (inch):	3/8
Max Starting Current MSC(A):		Liquid Pipe Connection (inch):	1/4
Rated Load Amps RLA(A):	8.5	Sound Pressure (H) (dBA):	52
Dimensions (HxWxD) (in):	21-5/8 x 26-9/16 x 11-3/16	Sound Power Level (dBA):	
Net Weight (lb):	60		

DIMENSIONAL DRAWING - OUTDOOR UNIT



C: 3D092206



Submittal Data Sheet

1.5-Ton Wall Mounted Unit

FTXN18NMVJURXN18NMVJU

FEATURES

- IR controller included
- Titanium apatite photocatalytic air purification filter (option)
- Hot start technology
- Auto-restart (after power failure)

INDOOR UNIT



BENEFITS

- Quiet operation
- Operating Range - Cooling (50° - 114.8°)
- Operating Range - Heating (5° - 64.4°)
- 10 Year limited parts warranty with online registration
- 5 Year limited parts warranty for commercial applications

OUTDOOR UNIT





Submittal Data Sheet

1.5-Ton Wall Mounted Unit

FTXN18NMVJURXN18NMVJU

SYSTEM PERFORMANCE

Indoor Unit Model No.	FTXN18NMVJU	Indoor Unit Name:	15 SEER HP DUCTLESS ID 1.5 TON
Outdoor Unit Model No.	RXN18NMVJU	Outdoor Unit Name:	15 SEER HP DUCTLESS OD 1.5 TON
Rated Cooling Capacity (Btu/hr):	17,100	Rated Cooling Conditions:	Indoor (°F DB/WB): 80 / 67 Ambient (°F DB/WB): 95 / 75
Sensible Capacity (Btu/hr):	14,130	Rated Piping Length(ft):	25
Max/Min Cooling Capacity (Btu/hr):	18,000 / 5,100	Rated Height Difference (ft):	65.60
Cooling Input Power (kW):	1.400	Rated Heating Conditions:	Indoor (°F DB/WB): 70 / 60 Ambient (°F DB/WB): 47 / 43
SEER (Non-Ducted/Ducted):	15.00 /	HSPF (Non-Ducted/Ducted):	8.2 /
EER (Non-Ducted/Ducted):	12.20 /	Heating COP (Non-Ducted/Ducted):	3.8 /
Rated Heating Capacity (Btu/hr):	18,000		
Max/Min Heating Capacity (Btu/hr):	19,100 / 5,100		
Heating Input Power (kW):	1.38		

SYSTEM DETAILS

Refrigerant Type:	R-410A	Cooling Operation Range (°F DB):	50 - 115
Holding Refrigerant Charge (lbs):	2.5	Heating Operation Range (°F WB):	5 - 64
Additional Charge (lb/ft):	0.01	Max. Pipe Length (Vertical) (ft):	66
Pre-charge Piping (Length) (ft):	32	Cooling Range w/Baffle (°F DB):	-
Max. Pipe Length (Total) (ft):	98	Heating Range w/Baffle (°F WB):	-
Max Height Separation (Ind to Ind ft):	66		

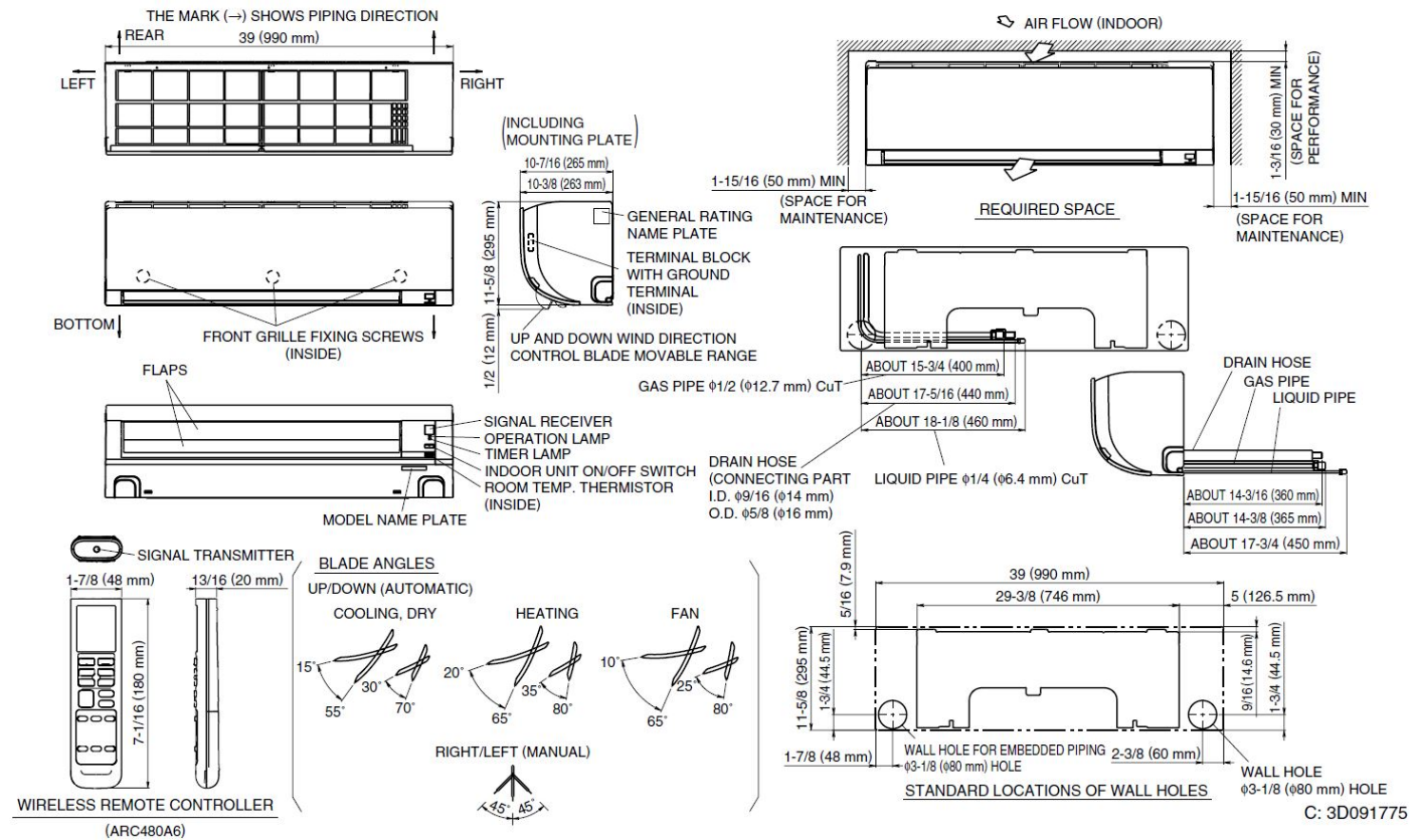
Submittal Data Sheet

1.5-Ton Wall Mounted Unit
FTXN18NMVJURXN18NMVJU

INDOOR UNIT DETAILS

Power Supply (V/Hz/Ph):	208-230 / 60 / 1	Airflow Rate (H/M/L/SL) (CFM):	713/579/455/417
Power Supply Connections:	See Outdoor Unit for Electrical Specs	Moisture Removal (Gal/hr):	1.0
Min. Circuit Amps MCA (A):		Gas Pipe Connection (inch):	1/2
Max Overcurrent Protection (MOP) (A):		Liquid Pipe Connection (inch):	1/4
Dimensions (HxWxD) (in):	11-5/8 x 39 x 10-3/8	Condensate Connection (inch):	5/8
Panel (HxWxD) (in):		Sound Pressure (H/M/L/SL) (dBA):	48/44/38/33
Net Weight (lb):	27	Sound Power Level (dBA):	64
Panel Weight (lb):		Ext. Static Pressure (Rated/Max) (inWg):	/

DIMENSIONAL DRAWING - INDOOR UNIT





Submittal Data Sheet

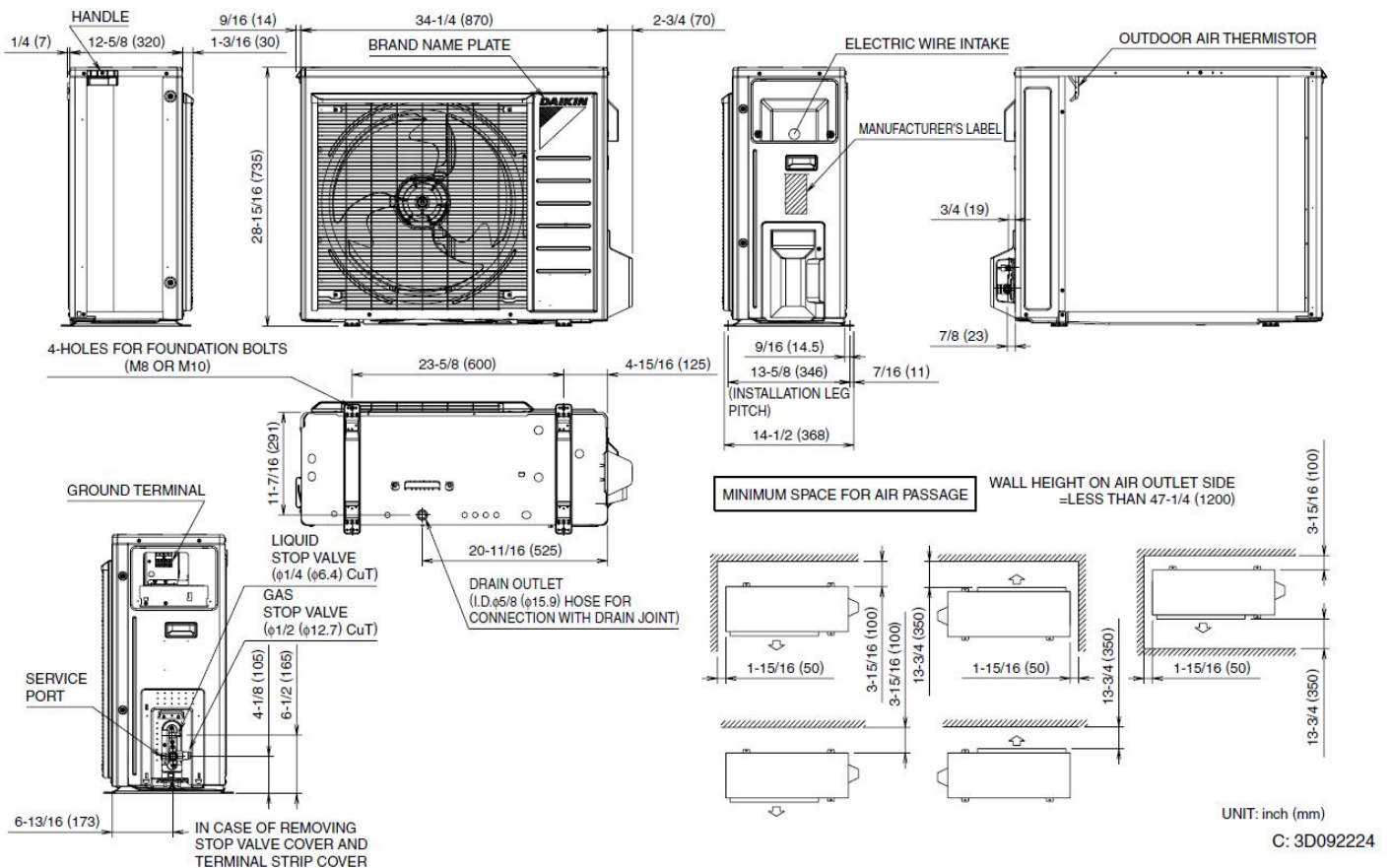
1.5-Ton Wall Mounted Unit

FTXN18NMVJURXN18NMVJU

OUTDOOR UNIT DETAILS

Power Supply (V/Hz/Ph):	208-230 / 60 / 1	Compressor Type:	Inverter
Power Supply Connections:	L1, L2, Ground	Capacity Control Range (%):	-
Min. Circuit Amps MCA (A):	13.30	Airflow Rate (H) (CFM):	2,313
Max Overcurrent Protection (MOP) (A):	15.00	Gas Pipe Connection (inch):	3/8
Max Starting Current MSC(A):		Liquid Pipe Connection (inch):	1/4
Rated Load Amps RLA(A):	10.0	Sound Pressure (H) (dBA):	56
Dimensions (HxWxD) (in):	28-15/16 x 34-1/4 x 12-5/8	Sound Power Level (dBA):	
Net Weight (lb):	97		

DIMENSIONAL DRAWING - OUTDOOR UNIT



Daikin North America LLC, 5151 San Felipe, Suite 500, Houston, TX, 77056

Daikin City Generated Submittal Data

www.daikinac.com www.daikincomfort.com

(Daikin's products are subject to continuous improvements. Daikin reserves the right to modify product design, specifications and information in this data sheet without notice and without incurring any obligations)

Submittal Date: 1/13/2017 6:45:07 AM

Page 4 of 4



Submittal Data Sheet

2.0-Ton Wall Mounted Unit

FTXN24NMVJURXN24NMVJU

FEATURES

- IR controller included
- Titanium apatite photocatalytic air purification filter (option)
- Hot start technology
- Auto-restart (after power failure)

BENEFITS

- Quiet operation
- Operating Range - Cooling (50° - 114.8°)
- Operating Range - Heating (5° - 64.4°)
- 10 Year limited parts warranty with online registration
- 5 Year limited parts warranty for commercial applications

INDOOR UNIT



OUTDOOR UNIT





Submittal Data Sheet

2.0-Ton Wall Mounted Unit

FTXN24NMVJURXN24NMVJU

SYSTEM PERFORMANCE

Indoor Unit Model No.	FTXN24NMVJU	Indoor Unit Name:	15 SEER HP DUCTLESS ID 2 TON
Outdoor Unit Model No.	RXN24NMVJU	Outdoor Unit Name:	15 SEER HP DUCTLESS OD 2 TON
Rated Cooling Capacity (Btu/hr):	22,000	Rated Cooling Conditions:	Indoor (°F DB/WB): 80 / 67 Ambient (°F DB/WB): 95 / 75
Sensible Capacity (Btu/hr):	16,120	Rated Piping Length(ft):	25
Max/Min Cooling Capacity (Btu/hr):	23,000 / 5,100	Rated Height Difference (ft):	65.60
Cooling Input Power (kW):	2.400	Rated Heating Conditions:	Indoor (°F DB/WB): 70 / 70 Ambient (°F DB/WB): 47 / 43
SEER (Non-Ducted/Ducted):	15.00 /	HSPF (Non-Ducted/Ducted):	8.2 /
EER (Non-Ducted/Ducted):	9.20 /	Heating COP (Non-Ducted/Ducted):	3.6 /
Rated Heating Capacity (Btu/hr):	22,000		
Max/Min Heating Capacity (Btu/hr):	25,400 / 5,100		
Heating Input Power (kW):	1.79		

SYSTEM DETAILS

Refrigerant Type:	R-410A	Cooling Operation Range (°F DB):	50 - 115
Holding Refrigerant Charge (lbs):	2.5	Heating Operation Range (°F WB):	5 - 75
Additional Charge (lb/ft):	0.01	Max. Pipe Length (Vertical) (ft):	66
Pre-charge Piping (Length) (ft):	32	Cooling Range w/Baffle (°F DB):	-
Max. Pipe Length (Total) (ft):	98	Heating Range w/Baffle (°F WB):	-
Max Height Separation (Ind to Ind ft):	66		

Submittal Data Sheet

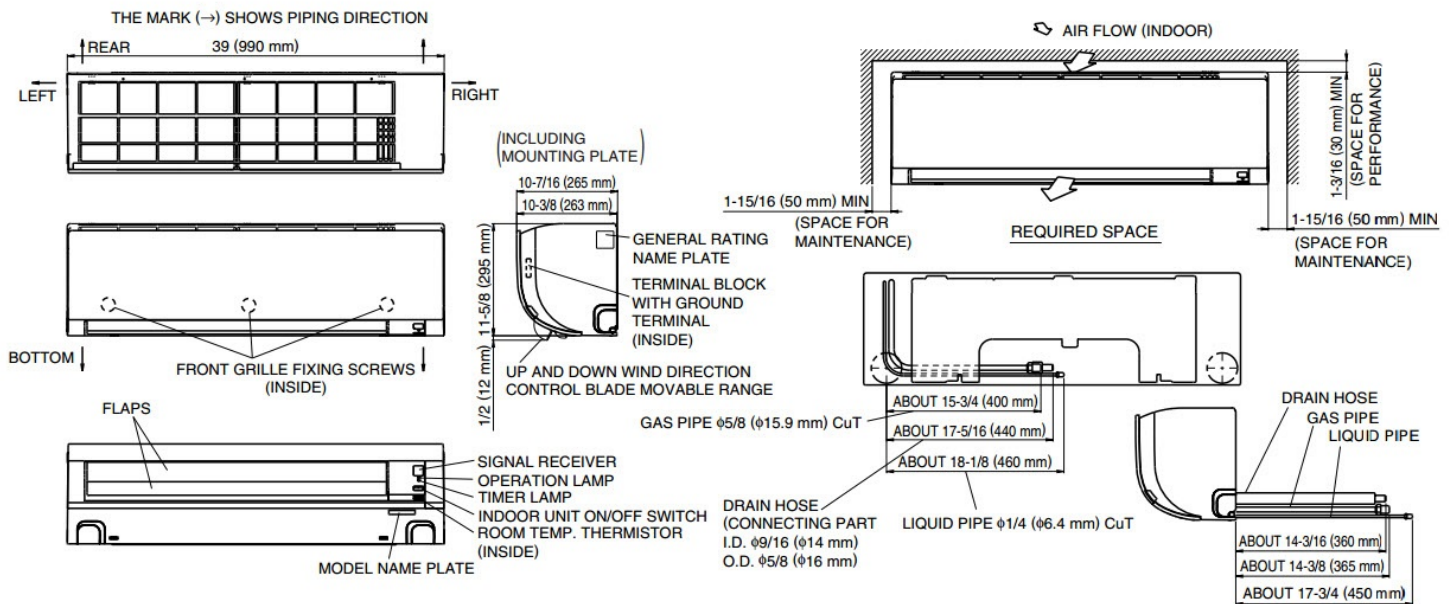
2.0-Ton Wall Mounted Unit

FTXN24NMVJURXN24NMVJU

INDOOR UNIT DETAILS

Power Supply (V/Hz/Ph):	208-230 / 60 / 1	Airflow Rate (H/M/L/SL) (CFM):	713/579/491/417
Power Supply Connections:	See Outdoor Unit for Electrical Specs	Moisture Removal (Gal/hr):	1.2
Min. Circuit Amps MCA (A):		Gas Pipe Connection (inch):	5/8
Max Overcurrent Protection (MOP) (A):		Liquid Pipe Connection (inch):	1/4
Dimensions (HxWxD) (in):	11-5/8 x 39 x 10-3/8	Condensate Connection (inch):	5/8
Panel (HxWxD) (in):		Sound Pressure (H/M/L/SL) (dBA):	51/45/39/34
Net Weight (lb):	27	Sound Power Level (dBA):	
Panel Weight (lb):		Ext. Static Pressure (Rated/Max) (inWg):	/

DIMENSIONAL DRAWING - INDOOR UNIT



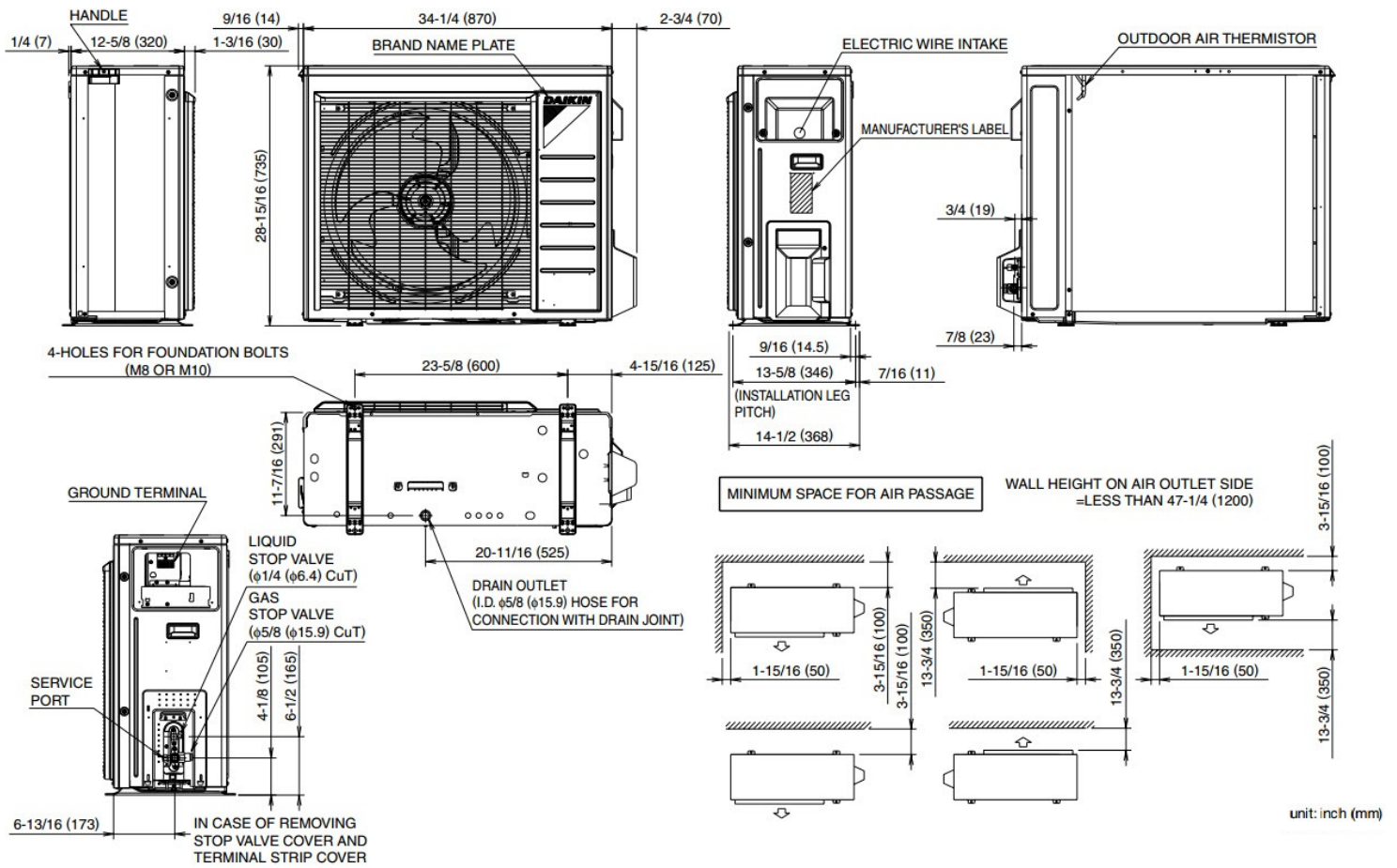
Submittal Data Sheet

2.0-Ton Wall Mounted Unit
FTXN24NMVJURXN24NMVJU

OUTDOOR UNIT DETAILS

Power Supply (V/Hz/Ph):	208-230 / 60 / 1	Compressor Type:	Inverter
Power Supply Connections:	L1, L2, Ground	Capacity Control Range (%):	-
Min. Circuit Amps MCA (A):	18.30	Airflow Rate (H) (CFM):	2,609
Max Overcurrent Protection (MOP) (A):	20.00	Gas Pipe Connection (inch):	5/8
Max Starting Current MSC(A):		Liquid Pipe Connection (inch):	1/4
Rated Load Amps RLA(A):	14.5	Sound Pressure (H) (dBA):	59
Dimensions (HxWxD) (in):	28-15/16 x 34-1/4 x 12-5/8	Sound Power Level (dBA):	
Net Weight (lb):	97		

DIMENSIONAL DRAWING - OUTDOOR UNIT



Daikin North America LLC, 5151 San Felipe, Suite 500, Houston, TX, 77056

Daikin City Generated Submittal Data

www.daikinac.com www.daikincomfort.com

(Daikin's products are subject to continuous improvements. Daikin reserves the right to modify product design, specifications and information in this data sheet without notice and without incurring any obligations)

Submittal Date: 1/13/2017 6:45:32 AM

Page 4 of 4