

Features

- Solid brass construction
- Face plate with handle escutcheon and ADA compliant diverter pull-knob
- 1.8 gallons (6.7 liters) per minute maximum flow rate showerhead
- Lever handle is ADA compliant when used with Tub and Shower Trim
- Intended for use with Newport Brass rough valve(s) as specified (Required Accessory)

Codes / Standards Compliance

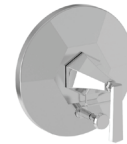
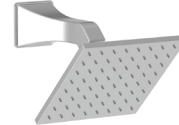
Meets or exceeds the following at date of manufacture:

- ASME A112.18.1/CSA B125.1
- IAPMO/cUPC
- IPC
- ADA
- ICC/ANSI A117.1
- ASSE 1016
- Energy Policy Act of 1992
- All applicable US Federal and State material regulations

Colors / Finishes

- 15: Polished Nickel
- 15S: Satin Nickel - PVD
- 26: Polished Chrome

Tub and Shower Trim FE-3-8802BP



Specified Model

Model	Description	Colors Finishes
FE-3-8802BP	Tub and Shower Trim	<input type="checkbox"/> 15 <input type="checkbox"/> 15S <input type="checkbox"/> 26

Required Accessory: Trim, above, and Rough Valve Kit, below, must both be specified

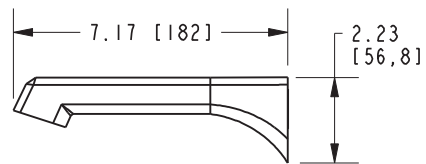
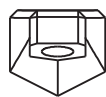
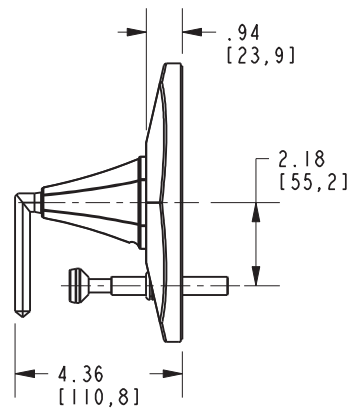
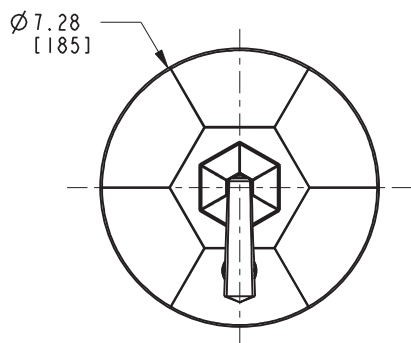
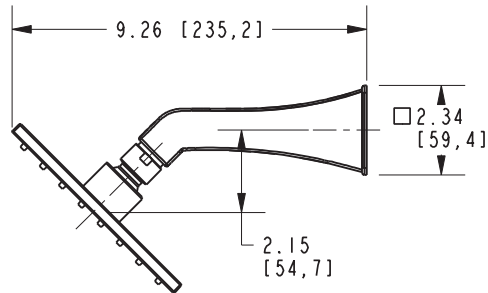
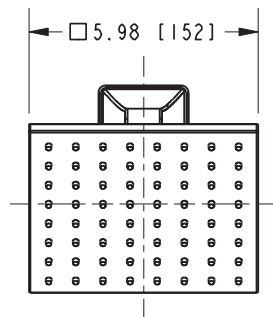
Application	Tub & Shower Valve
Description	BP w/Diverter
Inlet/Outlet	1/2"
Part Number	1-685
Image	

Product Specification Add "Length Indicator and Color / Finish" suffix to Model number, below.

The single-control Tub and Shower Trim shall be made of solid brass construction. Tub and Shower Trim shall include showerhead with arm and flange, tub spout and faceplate with escutcheon and ADA compliant diverter pull-knob. Lever handle is ADA compliant when used with Tub and Shower Trim. Showerhead shall have a maximum flow rate of 1.8 gallons (6.7 liters) per minute. Tub and Shower Trim shall be Ferguson Model FE-3-8802BP/_____ and single-control Tub and Shower rough valve shall be Newport Brass Model 1-685.

FE-3-8802BP

PRODUCT DIMENSIONS *(Units are in inches)*



Haseley Tub and Shower Trim
FE-3-8802BP