

# ST. MARTIN

## 3-HOLE ROMAN TUB FILLER

SKU: 948306



### FEATURES

- 3-hole installation.
- Optional rough-in valve:
- Brass coupling nut.
- Accommodates an 8" - 16" faucet spread.
- Deck thickness max. 1.5" or screws can be removed to accommodate thicker deck installations up to 2".

### SIGNATURE HARDWARE Lifetime Warranty

See website for detailed warranty information.

### CONTENTS

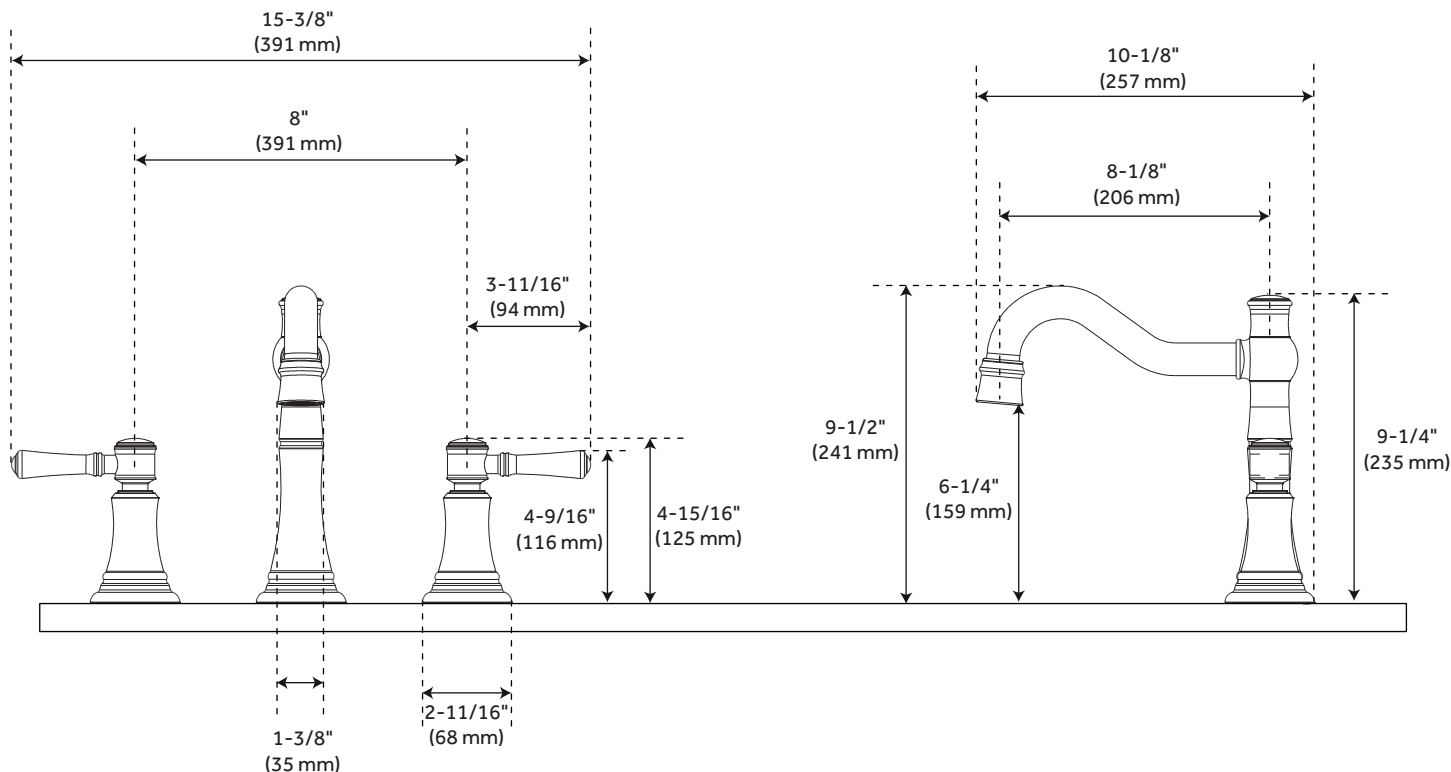
TUB FILLER .....	PAGE 2
VALVE .....	PAGE 3

REVISED 01/14/2020

# ST. MARTIN

## 3-HOLE ROMAN TUB FILLER

SKU: 948306



### FEATURES

Installation Type: Deck Mount  
Faucet Centers: 8" - 16"  
Handle Type: Lever  
Max. Deck Thickness: 2"  
Tub Faucet Material: Brass  
Width: 10-1/8"  
Height: 9-1/2"  
Height To Spout: 6-1/4"  
Spout Reach: 8-1/8"  
Spout Width: 1-3/8"  
Drain Included: No  
Ceramic Disc Cartridges: Yes

### CODES/STANDARDS

cUPC  
ASME A112.18.1/CSA B125.1  
ADA Compliant (when installed according to  
ADA Standards)  
Massachusetts Accepted



### SIGNATURE HARDWARE LIFETIME WARRANTY

See website for warranty information



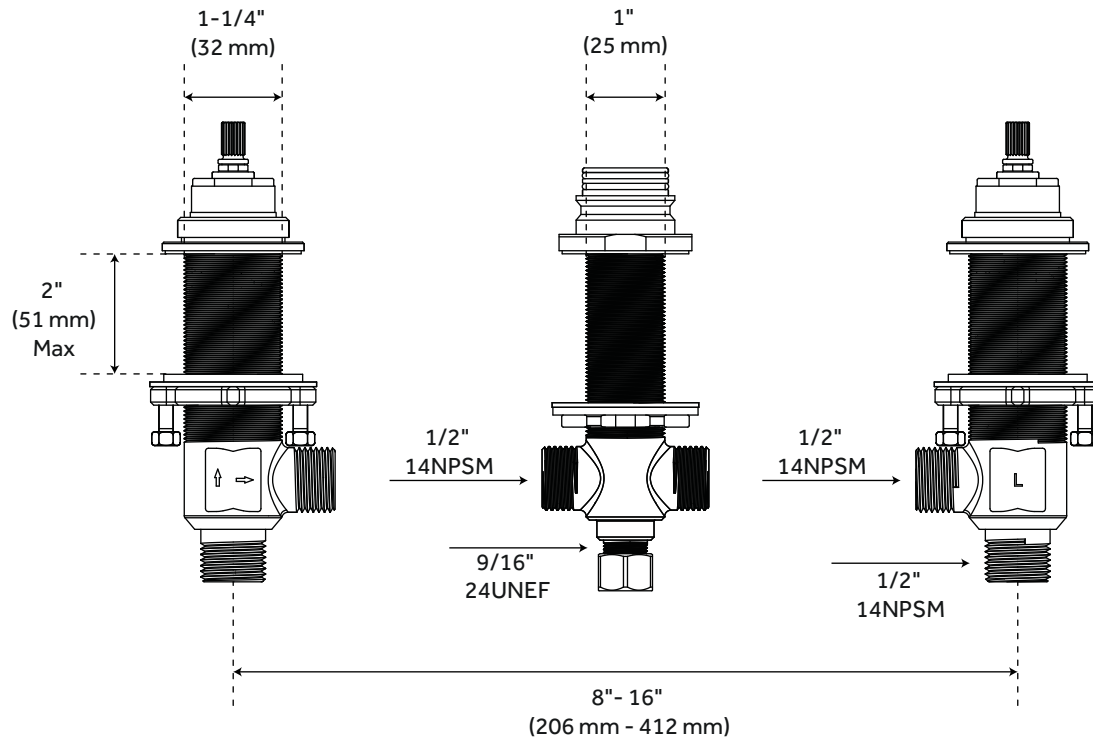
All dimensions and specifications are nominal and may vary. Use actual products for accuracy in critical situations.

REVISED 01/14/2020  
Code: SHSM3RTBN, SHSM3RTNORB  
SHSM3RTPN, SHSM3RTCP, SH674164

# 3 HOLE

## OPTIONAL ROMAN TUB FILLER ROUGH-IN VALVE

SKU: 448004



### FEATURES

- Fits 3-hole
- Brass coupling nut Trim sold separately
- Flow rate: 8 GPM at 20 PSI
- Deck thickness max. 1.5" or screws can be removed to accommodate thicker deck installations up to 2"
- Replacement cartridges available -
  - HOT MIR3357027H and
  - COLD MIR3357027C

### CODES/STANDARDS

- cUPC
- ASME A112.18.1/CSA B125.1
- ANSI A117.1 (when installed according to ADA standards)
- Massachusetts Accepted

### SIGNATURE HARDWARE LIFETIME WARRANTY

See website for warranty information



All dimensions and specifications are nominal and may vary. Use actual products for accuracy in critical situations.

PAGE 3  
CODE: SH674163