



PROFLO Apron Front Stainless Steel Sink Installation Instructions



CAREFULLY READ THESE INSTRUCTIONS BEFORE YOU BEGIN.

- Metal edges may be sharp – use caution when handling.
- For Experienced and Professional Installation Only.
- Follow all local standards and codes.
- For solid surface countertop installations only.
- A custom sink base cabinet is required.
- Proper installation requires a coordinated effort including advanced dialog between the designer (or customer), the cabinet maker, the countertop fabricator and the sink installer during the design and installation phase.
- Recommends providing the cabinet maker with the actual sink to be installed prior to cabinet fabrication.
- Mounting clips and fasteners not furnished.



Installation Options:

Farmhouse sinks offer installation options depending on your design.

Undermount Installation

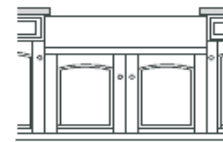


Figure 1

Flush mount Installation

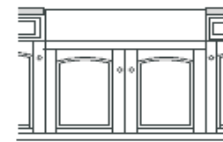


Figure 2

Built-up Installation

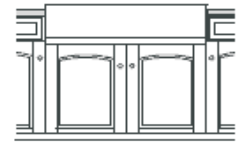
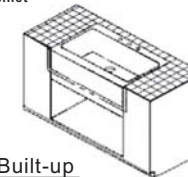
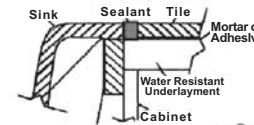
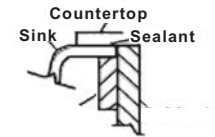
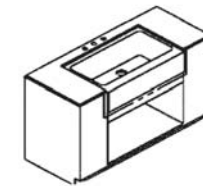


Figure 3



Flush mount & Built-up installation

1. This sink is designed for installation flush with or slightly lower than the surrounding tile.
2. Measure the sink apron and cabinet opening to make sure sink apron will fit into cabinet opening. If necessary, sand opening or add wood filler strips.
3. Assemble faucet according to manufacturer's directions.
4. Place a thin layer of sealant at each corner of the supporting frame where it will contact the sink.
5. Gently position the sink within the frame, placing the sink in the center of the cabinet.



UNDERCOUNTER INSTALLATION

1. The supporting frame should be positioned so that the top of the sink rim (when placed inside the cabinet) is level and flush with the top surface of the cabinet perimeter support or underlayment at the cut out area.
2. Measure sink apron and cabinet opening to make sure sink apron will fit into cabinet opening. If necessary, sand opening or add wood filler strips.
3. Assemble faucet according to manufacturer's directions.
4. Place a thin layer of sealant at each corner of the supporting frame where it will contact the sink.
5. Gently position the sink within the frame, placing the sink in the center of the cabinet.
6. Make sure the sink rim is level and flush with the cabinet perimeter. Adjust or shim between the sink and the support if needed to obtain proper fit. The top of the sink rim must be flush with the top of the cabinet perimeter in order to obtain proper contact with the underside of the countertop.
7. Assemble the strainer or garbage disposal to the sink according to the manufacturer's directions.
8. Using sealant between the sink and the cabinet is optional and up to the buyer's discretion.



Limited Lifetime Warranty Residential Stainless Steel Sinks

WARRANTY: Subject to the limitations expressed herein, Seller warrants to the original purchaser that stainless steel sinks manufactured by Seller shall be free from defects in design, material and workmanship under Normal Use for the lifetime of the sink ("Warranty Period"). This warranty is void for any damage caused by misuse, abuse, neglect, acts of God, or improper installation. For the purpose of this section, "Normal Use" means in strict accordance with the installation, operation and maintenance manual for residential applications only. The warranty for products not manufactured by Seller is provided by the original equipment manufacturer.

REMEDIES: Seller shall repair or replace, at its option, any non-conforming or otherwise defective product, upon receipt of notice from Buyer during the Warranty Period at no additional charge.

SELLER HEREBY DISCLAIMS ALL OTHER EXPRESSED OR IMPLIED WARRANTIES, INCLUDING, WITHOUT LIMITATION, ALL IMPLIED WARRANTIES OF MERCHANTABILITY AND FITNESS OR FITNESS FOR A PARTICULAR PURPOSE.

LIMITATION OF LIABILITY: UNDER NO CIRCUMSTANCES SHALL EITHER PARTY BE LIABLE TO THE OTHER FOR INCIDENTAL, PUNITIVE, SPECIAL OR CONSEQUENTIAL DAMAGES OF ANY KIND. BUYER HEREBY ACKNOWLEDGES AND AGREES THAT UNDER NO CIRCUMSTANCES, AND IN NO EVENT, SHALL SELLER'S LIABILITY, IF ANY, EXCEED THE NET SALES PRICE OF THE DEFECTIVE PRODUCT(S) PURCHASED DURING THE PREVIOUS CONTRACT YEAR.

LABOR ALLOWANCE: Seller makes NO ADDITIONAL ALLOWANCE FOR THE LABOR OR EXPENSE OF REPAIRING OR REPLACING DEFECTIVE PRODUCTS OR WORKMANSHIP OR DAMAGE RESULTING FROM THE SAME.

RECOMMENDATIONS BY SELLER: Seller may assist Buyer in selection decisions by providing information regarding products that it manufactures and those manufactured by others. However, Buyer acknowledges that Buyer ultimately chooses the product's suitability for its particular use, as normally signified by the signature of Buyer's technical representative. Any recommendations made by Seller concerning the use, design, application or operation of the products shall not be construed as representations or warranties, expressed or implied. Failure by Seller to make recommendations or give advice to Buyer shall not impose any liability upon Seller.

EXCUSED PERFORMANCE: Seller will make a good faith effort to complete delivery of the products as indicated by Seller in writing, but Seller assumes no responsibility or liability and will accept no backcharge for loss or damage due to delay or inability to deliver, caused by acts of God, war, labor difficulties, accidents, inability to obtain materials, delays of carriers, contractors or suppliers or any other causes of any kind whatever beyond the control of Seller.

Mirabelle is a registered trademark of Ferguson Enterprises, Inc.

For more information on Mirabelle products, visit mirabelleproducts.com.