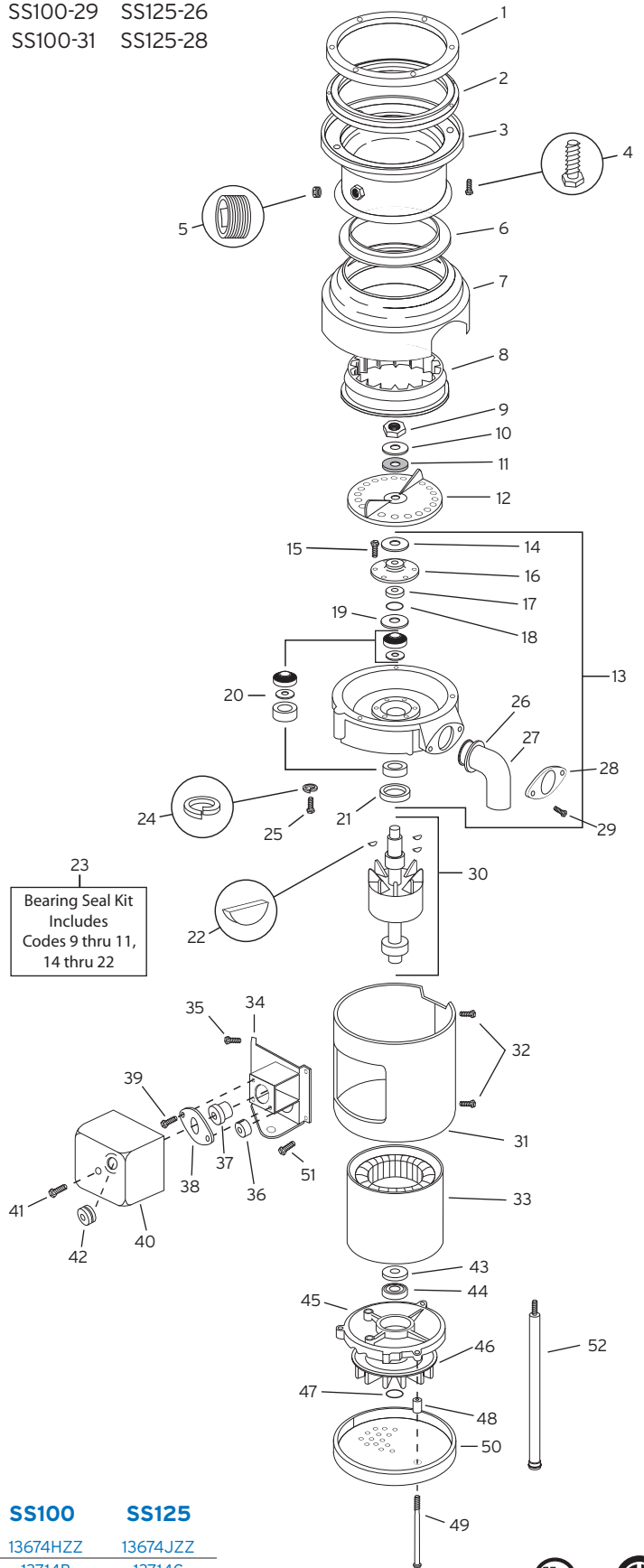


UL Approved
CSA Approved

SS50-27 SS75-28 SS100-29 SS125-26
SS50-29 SS75-30 SS100-31 SS125-28

| CODE # | DESCRIPTION | QTY | PART NUMBER |
|--------|---------------------------------|-----|---------------|
| 1 | Mounting Flange | 1 | 11004 |
| 2 | Mounting Gasket | 1 | 11016 |
| 3 | Upper Body Assy | 1 | 11020A |
| 4 | Screw (1/4-20 x 3/4) | 6 | 1491 |
| 5 | Pipe Plug | 1 | 11227 |
| 6 | Shredder Gasket | 1 | 11006 |
| 7 | Body & Cover Assy | 1 | 12442ZZ |
| 8 | Stationary Shredder | 1 | 14664 |
| 9 | Nut | 1 | 11260 |
| 10 | Washer | 1 | 12445 |
| 11 | Fiber Washer | 1 | 12142 |
| 12 | Rotating Shredder Assy | 1 | 12944ZZ |
| 13 | Upper End Bell Assy (14-22) | 1 | 13722 |
| 14 | Shield | 1 | 12936 |
| 15 | Screw (8-18 x 1/2) | 6 | 1269 |
| 16 | Seal Assy | 1 | 12934A |
| 17 | Spacer Sleeve | 1 | 12935 |
| 18 | O-Ring | 1 | 12860 |
| 19 | Slinger | 1 | 12319 |
| 20 | Upper Bearing Assy | 1 | 12610 |
| 21 | Water & Oil Seal | 1 | 12326 |
| 22 | Woodruff Key | 3 | 11322 |
| 23 | Bearing Seal Kit (9-11 & 14-22) | 1 | 13080 |
| 24 | Lock Washer | 3 | 11444 |
| 25 | Screw (1/4-20 x 1) | 3 | 3135 |
| 26 | Tailpipe Gasket | 1 | 1470 |
| 27 | Tailpipe | 1 | 8219 |
| 28 | Tailpipe Flange | 1 | 1461 |
| 29 | Screw (1/4-20 x 1/2) | 2 | 1468 |
| 30 | Rotor & Shaft Assy (Inc 43) | 1 | See Chart "A" |
| 31 | Trim Band | 1 | 12370ZZ |
| 32 | Screw (8-32 x 1/2) | 2 | 1836A |
| 33 | Stator Assy | 1 | See Chart "A" |
| 34 | Bracket Assy | 1 | 12433EZZ |
| 35 | Screw (8-18 x 1/4) | 4 | 11448 |
| 36 | Bushing | 1 | 12384 |
| 37 | Overload Protector | 1 | See Chart "A" |
| 38 | Overload Clamp | 1 | 12378 |
| 39 | Screw (8-32 x 1/2) | 2 | 8221 |
| 40 | Terminal Box Assy (Inc 42) | 1 | 13396ZZ |
| 41 | Screw (8-32 x 1-1/4) | 1 | 12381 |
| 42 | Overload Grommet | 1 | 12383 |
| 43 | Lower Bearing | 1 | 13709 |
| 44 | Pre-Load Spring | 1 | 13678 |
| 45 | Lower End Frame | 1 | 13747 |
| 46 | Fan | 1 | 13676ZZ |
| 47 | Retaining Ring | 1 | 13677ZZ |
| 48 | Tube Spacer | 3 | 12490 |
| 49 | Thru Bolt | 3 | 11940A |
| 50 | Bottom Cover | 1 | 12396 |
| 51 | Ground Screw | 1 | 2466A |
| 52 | Foot Tube Assy (Optional) | 2 | 11757B |



A

| CODE # | DESCRIPTION | QTY | SS50 | SS75 | SS100 | SS125 |
|--------|--------------------|-----|----------|----------|----------|----------|
| 30 | Rotor & Shaft Assy | 1 | 13674EZZ | 13674GZZ | 13674HZZ | 13674JZZ |
| 33 | Stator Assy | 1 | 13714 | 13714A | 13714B | 13714C |
| 37 | Overload Protector | 1 | 13422H | 13422K | 13422N | 13422M |

