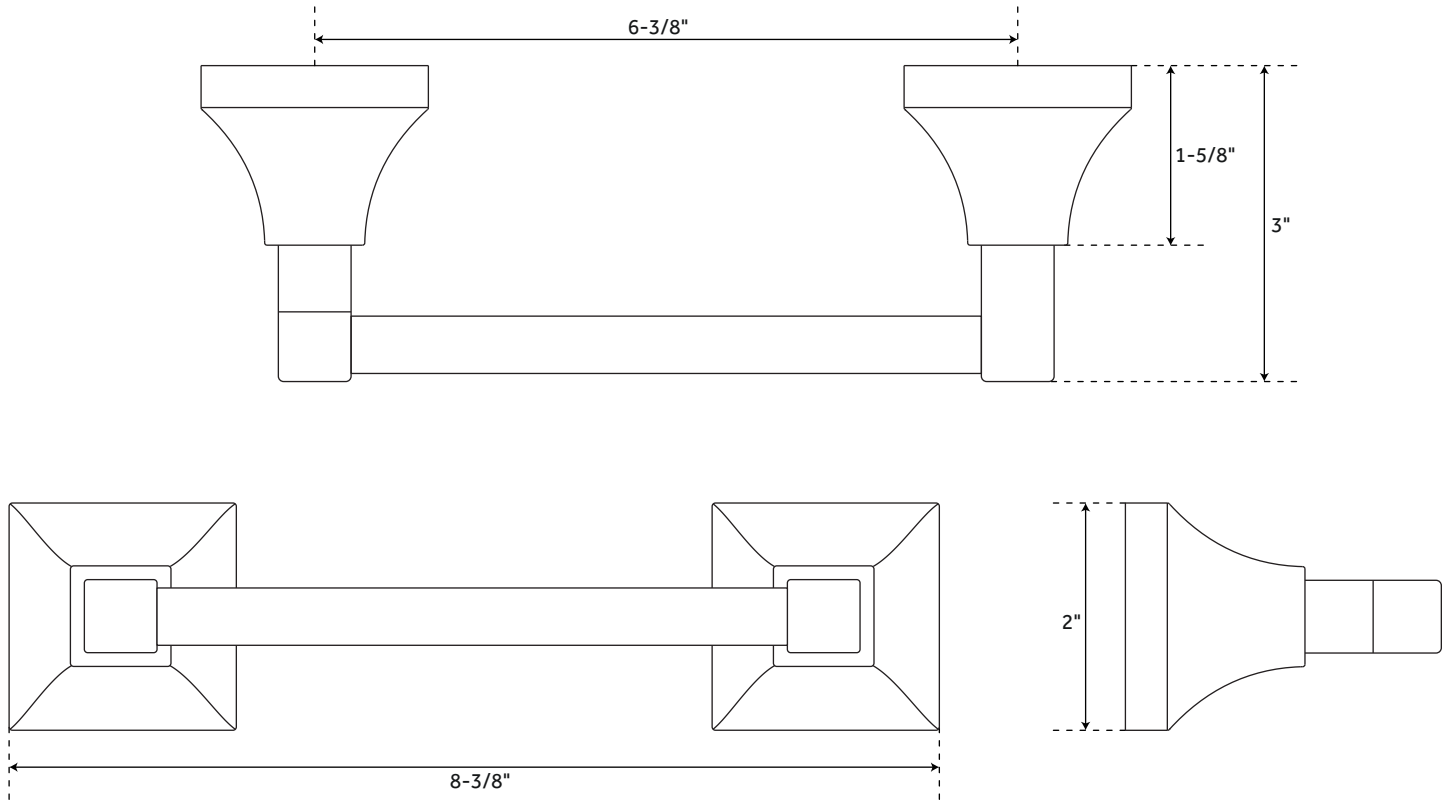


CARRAWAY

TOILET PAPER HOLDER

SKU: 948300



FEATURES

Installation Type: Wall Mount
Design: Transitional
Material: Zinc
Length: 8-3/8"
Height: 2"
Depth: 3"
Base Plate Length: 2"
Base Plate Height: 2"
Mounting Hardware Included: Yes
Mounting Hardware Concealed: Yes
Assembly Required: No
Centers: 6-3/8"

SIGNATURE HARDWARE LIFETIME WARRANTY

See website for warranty information



All dimensions and specifications are nominal and may vary. Use actual products for accuracy in critical situations.

REVISED 01/13/2020
CODE: SHCRTHBN/SHCRTHCP/SHCRTHPN