



INTERNATIONAL

PRODUCT
CATALOG

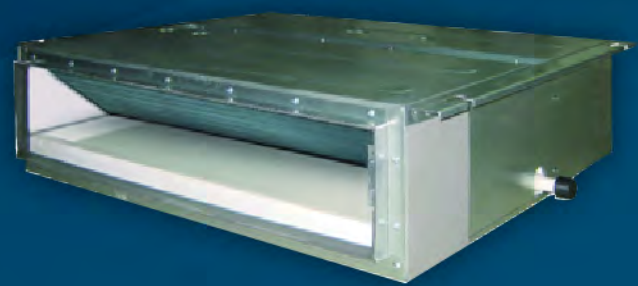


TABLE OF CONTENTS



- Blue Series1
- Platinum Series2
- 36,000 BTU3
- Multi-Splits4-5
- Sky Split6-8
- VAC19
- Factory Warranty10
- Accessories11

BLUE SERIES



- Inverter Technology
- Eco-Friendly Support
- Heat and Cool
- Installation Kit Included
- AHRI Certified
- Excellent Warranty Coverage
- Installation Kit Included

Heat & Cool 15 SEER R-410A Install Kit



Outdoor Model			ACZCI4H4R09	ACZCI4H4R12	ACZCI4H4R18	ACZCI4H4R24
Indoor Model			ACZEM4H4R09	ACZEM4H4R12	ACZEM4H4R18	ACZEM4H4R24
Power Supply		Ph-V-Hz	1Ph,208-230V~60Hz	1Ph, 208-230V~60Hz	1Ph, 208-230V~60Hz	1Ph, 208-230V~60Hz
COOLING	Capacity	BTU/h	9000	12000	18000	24000
	Input	W	950	1300	1950	2310
	Rated Current	A	9	9	11.54	12.20
	SEER		15	15	15	15
HEATING	Capacity	BTU/h	9554	13000	19000	23000
	Input	W	800	1250	1730	2300
	Rated Current	A	9	9	11.09	12.20
Indoor Noise Level (Max)		dB(A)	53	54	58	62
INDOOR UNIT	Dimensions	in	33.27 x 10.83 x 7.09	33.27 x 10.82 x 7.09	37.01 x 11.73 x 7.87	39.65 x 12.40 x 8.62
	Packing	in	36.14 x 10.16 x 14.57	36.14 x 10.16 x 14.57	39.88 x 15.08 x 11.81	42.36 x 15.67 x 12.91
	Net/Gross Weight	lbs	19.8/26.5	22/28.7	26.5/33.1	33.1/40.8
Outdoor Noise Level (Max)		dB(A)	62	63	66	69
OUTDOOR UNIT	Dimensions	in	27.95 x 21.65 x 12.52	27.95 x 21.65 x 12.52	37.60 x 27.56 x 15.60	37.60 x 27.56 x 15.59
	Packing	in	30.51 x 13.82 x 23.90	30.51 x 13.82 x 23.90	40.51 x 18.03 x 29.53	40.51 x 18.03 x 29.53
	Net/Gross Weight	lbs	61.7/66.2	66.2/70.6	101.4/111.4	114.7/124.6
Refrigerant Type / Pounds		R/oz	410A / 26.11	410A / 35.3	410A / 63.5	410A / 65.3
Design Pressure		psi	624 / 363	624 / 363	624 / 363	624 / 363
Refrigerant Piping	Liquid Side Gas Side	in	1/4" 3/8"	1/4" 3/8"	1/4" 1/2"	1/4" 5/8"
Ambient Temp (Cooling)		°F	64 ~ 109	64 ~ 109	64 ~ 109	64 ~ 109
Ambient Temp (Heating)		°F	19 ~ 75	19 ~ 75	19 ~ 75	19 ~ 75

PLATINUM SERIES

- Inverter Technology
- Auto Restart
- Heating Capability
- Sleep Mode
- AHRI & Energy Star Certified
- Excellent Warranty Coverage



Heat & Cool

18-22 SEER

R-410A



Outdoor Model			A22C14H4R09	A20C14H4R12	A18C14H4R18	A18C14H4R24
Indoor Model			A22EM4H4R09	A20EM4H4R12	A18EM4H4R18	A18EM4H4R24
Power Supply		Ph-V-Hz	1Ph, 208-230V~60Hz	1Ph, 208-230V~60Hz	1Ph, 208-230V~60Hz	1Ph, 208-230V~60Hz
COOLING	Capacity	BTU/h	9000	12000	18000	24000
	Input	W	620	1000	1500	1780
	Rated Current	A	7.00	7.20	12.20	12.20
	SEER		22	20	18	18
HEATING	Capacity	BTU/h	9800	13000	19800	23000
	Input	W	750	1200	1650	2100
	Rated Current	A	7.00	7.20	12.20	12.20
Indoor Noise Level (Max)		dB(A)	50	52	56	58
INDOOR UNIT	Dimensions	in	33.27 x 10.82 x 7.09	33.27 x 10.82 x 7.09	37.01 x 11.73 x 7.87	39.65 x 12.40 x 8.62
	Packing	in	36.14 x 10.16 x 14.57	36.14 x 10.16 x 14.57	39.76 x 11.22 x 14.96	42.36 x 15.67 x 12.91
	Net/Gross Weight	lbs	22/28.7	26/28.7	28.7/37.5	35.3/46.3
Outdoor Noise Level (Max)		dB(A)	60	62	66	68
OUTDOOR UNIT	Dimensions	in	33.39 x 21.26 x 12.60	33.39 x 21.26 x 12.60	37.60 x 27.56 x 15.60	38.58 x 31.10 x 16.81
	Packing	in	34.69 x 14.29 x 23.43	34.69 x 14.29 x 25.39	40.51 x 29.06 x 18.50	42.64 x 19.21 x 33.66
	Net/Gross Weight	lbs	79.38/90.41	88.2/97.02	99.2/110.2	132.3/145.5
Refrigerant Type / Pounds		R/oz	410A / 45.86	410A / 45.86	410A / 49.39	410A / 56.45
Design Pressure		psi	465 / 252	495 / 252	652.5 / 290	445 / 237
Refrigerant Piping	Liquid Side Gas Side	in	1/4" 3/8"	1/4" 3/8"	1/4" 1/2"	1/4" 5/8"
Ambient Temp		°F	19 ~ 110	19 ~ 110	19 ~ 110	19 ~ 110

36,000btu

MINI SPLIT-WIFI

- WiFi Control
- High Efficiency & Energy Saving
- Eco-Friendly Support
- Heating Capability
- AHRI Certified
- Excellent Warranty Coverage



Heat & Cool

16 SEER

R-410A



Globally Recognized. Industry Respected.



Outdoor Model		A16CI4H4R36	
Indoor Model		A16EM4H4R36	
Power Supply	V/Hz/Ph	208-230/60/1	
Cooling Capacity (Min ~ Max)	BTU/h	8,000 - 36,000	
Heating Capacity (Max)	BTU/h	34,600	
Cooling Power Input (Min ~ Max)	W	3650 (410 ~ 3800)	
Heating Power Input (Min ~ Max)	W	3560 (970 ~ 3700)	
Cooling Power Current	A	15.90	
Heating Power Current	A	15.50	
Rated Input	W	4200	
Rated Current	A	18.20	
SEER	BTU/w.h	16	
HSPF	BTU/w.h	8.20	
Application Area	m ²	495-753	
INDOOR UNIT	Dimensions (W x H x D)	in	53.15 x 12.83 x 9.96
	Packaged Dimensions (L x W x H)	in	56.73 x 16.57 x 14.09
	Net Weight Gross Weight	lbs	44 59.4
	Sound Power Level (Hi/Me/Lo)	dB(A)	62/60/58
OUTDOOR UNIT	Ambient Temp (cooling)	°F	64 - 109
	Ambient Temp (heating)	°F	19 - 75
	Sound Power Level (Hi/Lo)	dB(A)	69/67
	Dimensions (W x H x D)	in	38.58 x 31.10 x 16.81
	Packaged Dimensions (L x W x H)	in	42.64 x 19.21 x 33.66
	Net Weight Gross Weight	lbs	160.6 169.4
	Refrigerant Refrigerant Charge	lbs	R410A 5.06
CONNECTION PIPE	Length	ft	24.6
	Refrigerant Piping - Liquid Gas	in	1/4" 5/8"
	Max Distance - Height	ft	32.8
	Max Distance - Length	ft	98.4

MULTI SPLIT INVERTER

Heat & Cool

16 SEER

R-410A

- Inverter Technology
- Mix and Match
- Heating Capability
- AHRI Certified
- Excellent Warranty Coverage



Model (Outdoor)		A16CM4H4R18	A16CM4H4R24	A16CM4H4R36	A16CM4H4R39	A16CM4H4R42
Power Supply	V-Hz-Ph	208/230 - 60 - 1	208/230 - 60 - 1	208/230 - 60 - 1	208/230 - 60 - 1	208/230 - 60 - 1
Cooling Capacity (Min~Max)	BTU/h	18000 (7000~21000)	26000 (7500~33000)	29000 (7500~34000)	34000 (7500~34000)	41000 (8530~46403)
Heating Capacity (Min~Max)	BTU/h	19000 (8530~22600)	29000 (7500~35000)	30500 (7500~36000)	34000 (7500~36000)	44500 (10662~47768)
Cooling Power Input (Min~Max)	W	1650 (680~2800)	3050 (650~4500)	3450 (650~4500)	3450 (650~4500)	4400
Heating Power Input (Min~Max)	W	1640 (680~2800)	2800 (980~3950)	2850 (980~3950)	2850 (980~3950)	4600
SEER		16	16	16	16	16
HSPF		8.2	8.2	8.2	8.2	8.2
Ambient Temp (Cooling)	°F	23 ~ 118	23 ~ 118	23 ~ 118	23 ~ 118	23 ~ 118
Ambient Temp (Heating)	°F	5 ~ 81	5 ~ 81	5 ~ 81	5 ~ 81	5 ~ 81
Air Flow Volume	CFM	1530/1354/942	1942/1707/1413	1942/1707/1413	1942/1707/1413	1942/1707/1413
Permissible Excessive Operating Pressure (Discharge)	PSIG	500	500	500	500	500
Permissible Excessive Operating Pressure (Suction)	PSIG	235	235	235	235	235
Sound Pressure Level (H)	dB(A)	56	59	59	59	58
Sound Power Level (H)	dB(A)	66	69	69	69	68
Dimensions (WxHxD)	in	35.4 x 23.5 x 14.9	37.3 x 27.6 x 15.6	37.3 x 27.6 x 15.6	37.3 x 27.6 x 15.6	42.8 x 43.4 x 17.3
Package Dimensions (WxHxD)	in	37.4 x 25.4 x 16.6	40.7 x 30.2 x 18.2	40.7 x 30.2 x 18.2	40.7 x 30.2 x 18.2	45.3 x 46.6 x 20.6
Net Weight Gross Weight	lbs	94.6 105.6	134.2 145.2	136.7 147.7	136.7 147.7	225 247
Refrigerant Refrigerant Charge	lbs	R410A 2.97	R410A 4.84	R410A 4.84	R410A 4.84	R410A 4.84
Refrigerant Piping (Liquid Gas)	in	1/4" 3/8"	1/4" 3/8"	1/4" 3/8"	1/4" 3/8"	1/4" 3/8"
Max Distance Height	ft	16.4	32.8	32.8	32.8	50
Max Distance Length	ft	65.6	229.6	229.6	229.6	262

*All Multi-Split condensers come with adapter for 1/4" & 1/2" piping

MULTI-SPLIT COMBINATIONS

Outdoor Unit	Indoor Units	Indoor Units	Indoor Units	Indoor Units	Indoor Units	Indoor Units
Dual Zone 18k	9k + 9k	9k + 12k	18k			
Tri Zone 24k	9k + 9k + 9k	9k + 9k	12k + 12k	9k + 12k	18k	
Quad Zone 36/39k	9k + 9k + 9k + 9k	12k + 12k + 12k	12k + 12k + 9k	9k + 9k + 18k	18k + 18k	
Quint Zone 42k	9k + 9k + 9k + 9k + 9k	12k + 12k + 12k + 12k	18k + 18k + 9k	18k + 18k + 12k	9k + 12k + 18k	9k + 9k + 12k + 18k
Quint Zone 42k (Cont'd)	9k + 9k + 12k + 12k	9k + 9k + 9k + 12k	12k + 12k + 12k + 9k			

Model (Indoor)		A16EW4H4R09	A16EW4H4R12	A16EW4H4R18
Power Supply	V-Hz-Ph	208/230 - 60 - 1	208/230 - 60 - 1	208/230 - 60 - 1
Cooling Capacity	BTU/h	9000	12000	18000
Heating Capacity	BTU/h	9000	13000	19800
Air Flow Volume (SH/H/M/L)	CFM	330/294/253/218	341/277/253/218	500/459/383/324
Dehumidifying Volume	L/h	0.8	1.4	1.8
Application Area	ft ²	129 ~ 194	172 ~ 258	247 ~ 365
Sound Pressure Level (SH/H/M/L)	dB (A)	41/37/35/26	42/38/36/28	46/44/49/35
Sound Power Level (SH/H/M/L)	dB (A)	51/47/45/36	52/48/46/38	56/54/50/45
Dimensions (WxHxD)	in	33.39 x 10.83 x 7.09	33.39 x 10.83 x 7.09	37 x 11.73 x 7.87
Packing Dimensions (WxHxD)	in	36.14 x 14.57 x 10.16	36.14 x 14.57 x 10.16	39.88 x 11.34 x 15.55
Net Weight Gross Weight	lbs	22 28.6	22 28.6	28.6 37.4
Refrigerant Piping (Liquid Gas)	in	1/4" 3/8"	1/4" 3/8"	1/4" 1/2"

SKYsplit Match



- High Efficiency & Energy Saving
- Light Commercial Application
- Heating Capability
- AHRI Certified
- Excellent Warranty Coverage



Heat & Cool

16-18 SEER

R-410A

CASSETTE TYPE



Model (Indoor) Model (Outdoor)		ASKEC4H4R18 ASKCI4H4R18	ASKEC4H4R24 ASKCI4H4R24	ASKEC4H4R36 ASKCI4H4R36	ASKEC4H4R48 ASKCI4H4R48
Power Supply	V-Hz-Ph	208/230 - 60 - 1	208/230 - 60 - 1	208/230 - 60 - 1	208/230 - 60 - 1
Cooling Capacity (Min~Max)	BTU/h	17060 (5459~19789)	23884 (8188~29002)	34120 (10920~39250)	47768 (20472~50498)
Heating Capacity (Min~Max)	BTU/h	18766 (4776~22178)	27296 (8188~32414)	40944 (9890~48490)	54592 (17742~61416)
Cooling Power Input (Min~Max)	A	7.2 (2.30~7.80)	10.1 (3.60~11.00)	14.5 (3.60~20.00)	20.7 (5.7~23.9)
Heating Power Input (Min~Max)	A	7.6 (2.10~8.40)	10.2 (3.40~12.00)	15.5 (2.90~21.00)	20.2 (5.2~23.5)
SEER		16	18	16	16
EER		10.1	10.7	10.4	8.7
Air Flow Volume	CFM	447	765	1095	1354
Dehumidification Volume	Pint/h	0.85	1.14	1.61	2.13
Indoor Unit	Sound Pressure Level (SH/H/M/L)	dB(A) 47/46/44/37	47/46/42/38	51/49/46/43	53/52/47/41
Indoor Unit	Dimensions (WxDxH)	in 23.5/23.5/9.4	33.1/33.1/9.4	33.1/33.1/12.6	35.8/35.8/11.4
Indoor Unit	Net Weight Gross Weight	lbs 44.1 52.9	57.3 70.6	68.4 83.8	94.8 110.3
Outdoor Unit	Sound Pressure Level (H)	dB(A) 56	57	63	59
Outdoor Unit	Dimensions (WxDxH)	in 37.6/15.6/27.6	38.6/16.8/31.1	43.6/17.3/43.3	37.7/16.2/53.1
Outdoor Unit	Net Weight Gross Weight	lbs 103.6 110.3	147.7 158.8	202.9 220.5	231.5 253.6
Refrigerant Refrigerant Charge	oz	R410A 49.4	R410A 77.6	R410A 123.5	R410A 141.1
Testing Pipe Length / Additional Charge Over	ft	16.4/23.0	16.4/23.0	16.4/23.0	24.6/31.2
Connection Pipe Gass Additional Charge	oz/ft	0.3	0.6	0.6	0.6
Refrigerant Piping (Liquid Gas)	in	1/4" 1/2"	3/8" 5/8"	3/8" 5/8"	3/8" 5/8"
Max Distance Height	ft	49.2	49.2	49.2	98.4
Max Distance Length	ft	65.6	98.4	164.0	164.0

SKYsplit Match

INVERTER



18k & 24k Outdoor Unit



36k Outdoor Unit



48k Outdoor Unit

DUCTED TYPE



Model (Indoor) Model (Outdoor)		ASKEK4H4R18 ASKCI4H4R18	ASKEK4H4R24 ASKCI4H4R24	ASKEK4H4R36 ASKCI4H4R36	ASKEK4H4R48 ASKCI4H4R48	
Power Supply	V-Hz-Ph	208/230 - 60 - 1	208/230 - 60 - 1	208/230 - 60 - 1	208/230 - 60 - 1	
Cooling Capacity (Min~Max)	BTU/h	17060 (5459~19789)	23884 (7506~29002)	34120 (10920~39250)	47768 (20472~49474)	
Heating Capacity (Min~Max)	BTU/h	19107 (4776~23201)	27296 (8188~32414)	40944 (9890~48490)	52886 (17742~58004)	
Cooling Power Input (Min~Max)	A	7.2 (2.30~7.80)	10.1 (3.60~11.00)	15 (4.00~21.00)	21.5 (6.09~24.35)	
Heating Power Input (Min~Max)	A	7.2 (2.10~8.40)	10.2 (3.40~12.00)	15.5 (3.00~21.00)	20.2 (5.7~23.9)	
SEER		16	16	16	16	
EER		11.0	10.7	10.4	9.3	
Air Flow Volume	CFM	589	824	1095	1412	
Dehumidification Volume	Pint/h	0.66	0.90	1.28	1.80	
Indoor Unit	Sound Pressure Level (SH/H/M/L)	dB(A)	40/39/36/28	47/46/44/40	53/52/48/44	55/53/49/45
Indoor Unit	Dimensions (WxDxH)	in	39.3/28.4/10.5	48.8/22.0/10.6	48.3/30.5/11.4	52.8/29.6/13.8
Indoor Unit	Net Weight Gross Weight	lbs	72.8 83.8	75.0 86.0	101.4 116.9	123.5 143.3
Outdoor Unit	Sound Pressure Level (H)	dB(A)	56	57	63	59
Outdoor Unit	Dimensions (WxDxH)	in	37.6/15.6/27.6	38.6/16.8/31.1	43.6/17.3/43.3	37.7/16.2/53.1
Outdoor Unit	Net Weight Gross Weight	lbs	103.6 110.3	147.7 158.8	202.9 220.5	231.5 253.6
Refrigerant Refrigerant Charge	oz	R410A 49.4	R410A 77.6	R410A 123.5	R410A 141.1	
Testing Pipe Length / Additional Charge Over	ft	16.4/23.0	16.4/23.0	16.4/23.0	24.6/31.2	
Connection Pipe Gass Additional Charge	oz/ft	0.3	0.6	0.6	0.6	
Refrigerant Piping (Liquid Gas)	in	1/4" 1/2"	3/8" 5/8"	3/8" 5/8"	3/8" 5/8"	
Max Distance Height	ft	49.2	49.2	49.2	98.4	
Max Distance Length	ft	65.6	98.4	164.0	164.0	

FLOOR & CEILING TYPE



Model (Indoor) Model (Outdoor)			ASKEL4H4R18 ASKCI4H4R18	ASKEL4H4R24 ASKCI4H4R24	ASKEL4H4R36 ASKCI4H4R36	ASKEL4H4R48 ASKCI4H4R48
Power Supply	V-Hz-Ph		208/230 - 60 - 1	208/230 - 60 - 1	208/230 - 60 - 1	208/230 - 60 - 1
Cooling Capacity (Min ~Max)	BTU/h		17060 (5459~19789)	23884 (8188~27978)	34120 (10920~39250)	47768 (20472~50498)
Heating Capacity (Min ~Max)	BTU/h		19107 (4776~23201)	27296 (8188~30708)	40944 (9890~48490)	54592 (17742~61416)
Cooling Power Input (Min ~Max)	A		7.2 (2.30~7.80)	10.1 (3.60~11.00)	14.5 (3.60~20.00)	20.7 (5.7~23.9)
Heating Power Input (Min ~Max)	A		7.2 (2.10~8.40)	10.2 (3.40~12.00)	15.5 (2.90~21.00)	20.2 (5.2~23.5)
SEER			17	16	16	16
EER			11.0	10.7	10.4	8.7
Air Flow Volume	CFM		589	706	1118	1354
Dehumidification Volume	Pint/h		0.76	0.99	1.51	1.99
Indoor Unit	Sound Pressure Level (SH/H/M/L)	dB(A)	44/42/38/32	49/48/46/40	54/53/51/46	57/55/50/46
Indoor Unit	Dimensions (WxDxH)	in	48/27.6/8.9	48/27.6/8.9	55.9/27.6/9.6	66.9/27.6/9.6
Indoor Unit	Net Weight Gross Weight	lbs	86.0 101.4	88.2 110.3	105.8 123.5	130.1 149.9
Outdoor Unit	Sound Pressure Level (H)	dB(A)	56	57	63	59
Outdoor Unit	Dimensions (WxDxH)	in	37.6/15.6/27.6	38.6/16.8/31.1	43.6/17.3/43.3	37.7/16.2/53.1
Outdoor Unit	Net Weight Gross Weight	lbs	103.6 110.3	147.7 158.8	202.9 220.5	231.5 253.6
Refrigerant Refrigerant Charge		oz	R410A 49.4	R410A 77.6	R410A 123.5	R410A 141.1
Testing Pipe Length / Additional Charge Over		ft	16.4/23.0	16.4/23.0	16.4/23.0	24.6/31.2
Connection Pipe Gass Additional Charge		oz/ft	0.3	0.6	0.6	0.6
Refrigerant Piping (Liquid Gas)		in	1/4" 1/2"	3/8" 5/8"	3/8" 5/8"	3/8" 5/8"
Max Distance Height		ft	49.2	49.2	49.2	98.4
Max Distance Length		ft	65.6	98.4	164.0	164.0

- **INVERTER TECHNOLOGY TO IMPROVE SYSTEM EFFICIENCY**

System utilized all DC Inverter Compressors and a high pressure chamber to reduce overheat loss and improve compression efficiency from direct intake. High-efficient Permasyn Motor is adopted to provide better performance than traditional DC Inverter Compressor.

- **SENSORLESS DC INVERTER FAN MOTOR**

Stopless speed regulation ranges from 5Hz to 65Hz. Compared with traditional inverter motors the noise, less vibration and stopless operation. Sensorless control technology guarantees lower operation is more energy-saving.

- **ACCURATE INTELLIGENT ALLOCATION TECHNOLOGY OF CAPACITY AND OUTPUT OF OPTIMAL PORTION TO ENSURE HIGHEST EFFICIENCY**

When the total load of the system demands more than the 75% running capacity, an extra unit will automatically start, if the total load demands less than 40% of running capacity, a units will shut down; therefore each unit shares between 40% to 75% of the total load, ensuring that the system will perform at the highest efficiency.

- **SUB-COOLING CONTROL FOR OPTIMAL COOLING AND HEATING CONDITIONS**

Heat exchange loop can control the first sub-cooling process of heat exchanger. Subcooling degree can reach 11°C Sub-cooling loop can reach up to 9°C. On the second stage, to guarantee cooling and heating performance.





FACTORY WARRANTY

Unit	Parts Warranty	Compressor Warranty
PTACs	1 Year	5 Years
Mini Split Non-Inverter (Bronze)	1 Year	5 Years
Mini Split Inverter (Silver)	2 Years	5 Years
Mini Split Inverter (Blue)	2 Years	5 Years
Mini Split Inverter (36K)	2 Years	5 Years
Mini Split Inverter (Platinum)	1 Year	5 Years
Sky Split Match	1 Year	5 Years
Multi-Split Inverter	1 Year	5 Years
Ducted Split 13 SEER	5 Years	5 Years
Package Small 13 SEER	1 Year	5 Years

The factory warranty is valid from the date of the seller's invoice date.

Need Guides, Manuals and other Air-Con info?

Please visit the Air-Con International Technical Support Wiki for wiring guides, specs, and more!



Page Discussion
Read
View source
View history

Main Page

- Usage Guide
- Support Documents
- Warranty Policy
- Identifying Model & Serial Numbers
- Installation Cables
- Support Videos

Air-Con Units

- Blue Series
- Bronze Series
- Silver Series
- Platinum Series
- 36K Mini Split
- Multi Splits
- Sky Split Series

Main Page

Read
View source
View history



Welcome to the Technical Support Wiki

Please use the links to the left to find information on a specific product as well as general support information. If you do not know under which category your Air-Con unit falls under (ex: Bronze Series), please type the unit's model number in the search bar.

This wiki is updated as new products are announced or changes to existing products are made. Not all products will have the same amount of detail. If you feel there is something that could be added to this wiki please [email us](#).

For information regarding Air-Con products please visit [our home page](#).

This page was last modified on 18 February 2014, at 07:25.

Visit the wiki at

<http://airconint.com/wiki>



MINI SPLIT ACCESSORIES



Installation Kits

Installation kits come in two sizes:

- 15 feet
- 25 feet

Comes with insulated copper tubing and electrical wires.



410A Tool & Adapter Kit

This tool kit contains everything you need to install and service 410A Central and Split systems using 410A refrigerant. The kit includes the following:

- Two Valve Service Manifold
- Clutch Type Flaring Tool
- Imperial and Metrix Hex Tools
- Brass Adapters (with bend and swivel)
- 5/16 Brass Caps
- Premium 5 Hoses with Ball Valve
- 6-in-1 Metric Torque Wrench
- Valve Core Tool
- Brass Adapters (straight)
- Large Square Tool Bag



Wall Brackets

Our wall brackets are a one-size-fits-most model. One bracket can adjust to accommodate 9,000 - 24,000 BTU models.



Universal Remote

QTH-4000 Universal remote works with 99% of existing mini split models. Use this to replace a broken or lost remote control.



410A Access Fitting

5/16"(1/2"-20) Female x 1/4" Male Adapter.



Concrete Slab

- Place outdoor unit on top of uneven ground with concrete slab.



Vacuum Pump

- High performance vacuum pump
- Anti-oil-return
- Environment friendly



Lineset Covers

Hide outdoor-facing tubing with covers for a more attractive outdoor space.



Two Way Manifold Gauge Set

- Works with all refrigerants
- Easy to read color scales



Refrigerant Recovery Machine

- R-410A ready
- Complete compressor rebuilt in minutes
- Integrated component mooring for quiet operation.

WARNINGS AND RECOMENDATIONS:

Always use a licensed HVAC installer or contractor to install Air-Con, and Sharp products. Improper installation can lead to health hazards as well as property damage. Installation by an unlicensed HVAC installer will void any warranties attached to a product.

- Please read the User's Manual before operation. The manual contains important information on usage and regular maintenance.



Air-Con International, Inc.

5610 NW 12th Ave. Suite 209-211

Ft. Lauderdale, FL 33309

www.airconint.com

Ph. 954-771-1415 • Fx. 954-771-1418

Any products featured in this catalog are subject to continuous changes. Air-Con reserves the right to modify the product design, specifications and information in this catalog without notice.