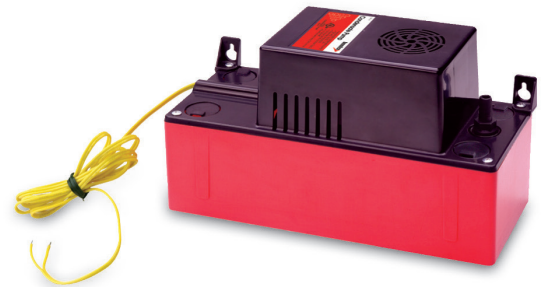
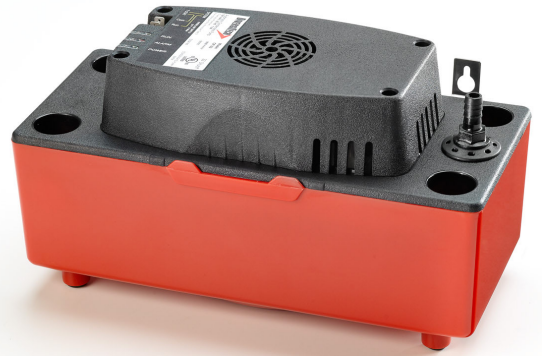


## Specifications

<b>Product</b>	CP Series Condensate Pumps
<b>Application</b>	High efficiency furnaces and humidifiers
<b>Purpose</b>	This product is designed to automatically pump condensate produced by high efficiency boilers and humidifiers up to 22' vertically once the level of condensate in the tank reaches a specified level.
<b>Advantages</b>	DiversiTech CP-22 series pumps beat the industry standard of 20' lift height by 2 feet and come with innovative features such as: vibration dampening feet and motor mounts, metal hang tabs, four inlet holes (and 3 poly covers for the unused), LED indicators, float switch and duckbill-style check valve, plug protector, and detailed installation instructions. Two terminals are provided allowing the installer flexibility to connect air-handler shut-down - an important safety consideration. CP-22 is available with 20' of 3/8" tubing as well.
	Utilizing the same great features but in a low-height (4-3/8") design, the CP-22LP is great for tight spaces.
	If a smaller job is in order, the CP-16 is an economical alternative that's based off of the proven CP-22 design. more compact than the CP-22, it's designed to lift to a maximum of 16 feet. The CP-16 shares many of the great features of the CP-22, including hang tabs, four inlet holes, float switch, overflow switch, and a check valve.
<b>Maximum Condensate Temperatures</b>	<ul style="list-style-type: none"> <li>• Continuous duty 140F°</li> <li>• Maximum inlet temperature 160F°</li> <li>• Not suitable for contact with steam or gasses that exceed 160F°</li> </ul>
<b>Rated Voltage</b>	120 VAC / 230VAC / 60Hz
<b>Rated Current Draw</b>	<ul style="list-style-type: none"> <li>• 1.9 Amps (120VAC)</li> <li>• 1.0 Amps (230VAC)</li> </ul>
<b>Input Type</b>	<ul style="list-style-type: none"> <li>• USA 3-prong molded plug (120VAC)</li> <li>• NEMA 6-15 plug (230VAC)</li> </ul>
<b>Maximum Lift Height</b>	<ul style="list-style-type: none"> <li>• CP-22 series: 22'</li> <li>• CP-16 series: 16'</li> </ul> <p>(Every Diversitech condensate pump is computer tested to ensure excellent performance at all pumping levels.)</p>
<b>Flow Rate @ Zero Head</b>	<ul style="list-style-type: none"> <li>• CP-22: 1.6 gallons per minute</li> <li>• CP-16: 1.2 gallons per minute</li> </ul>
<b>Dimensions</b>	<ul style="list-style-type: none"> <li>• CP-22: 11.8" x 5.9" x 6.7" (4.9"H low profile)</li> <li>• CP-16: 4.5" x 10.75" x 6.5"</li> <li>• CP-22: 5 lbs. (4.7 lbs. low profile)</li> <li>• CP-16: 3.8 lbs.</li> </ul>
<b>Inlet Height from Base</b>	<ul style="list-style-type: none"> <li>• CP-22: 4.4" (1.75" low profile)</li> <li>• CP-16: 3.5"</li> </ul>
<b>Tank Capacity</b>	<ul style="list-style-type: none"> <li>• CP-22: 1/2 gallon</li> <li>• CP-22LP: 3/8 gallon</li> <li>• CP-16: 2/5 gallon</li> </ul>
<b>Included Accessories</b>	<ul style="list-style-type: none"> <li>• Instruction Booklet</li> <li>• Metal Hang Tabs</li> <li>• Plug Protector</li> <li>• 4' Remote Shutoff Leads w/insulated terminals</li> <li>• Polyethelene inlet covers (3)</li> </ul>
<b>Wiring Color References</b>	<ul style="list-style-type: none"> <li>• 120V</li> <li>Black - Live/Hot</li> <li>White - Neutral</li> <li>Green - Ground</li> <li>(All installations must conform to NEC requirements)</li> </ul>
	<ul style="list-style-type: none"> <li>• 230V</li> <li>Brown - Live/Hot</li> <li>Blue - Live/Hot</li> <li>Green/Yellow - Ground</li> <li>(All installations must conform to NEC requirements)</li> </ul>



# Condensate Pumps

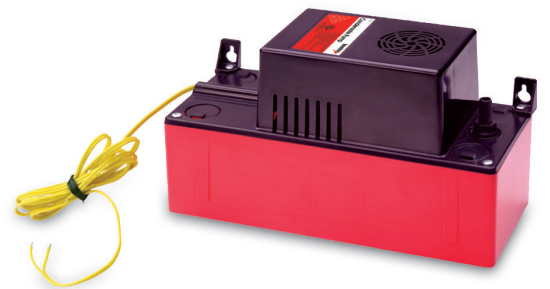
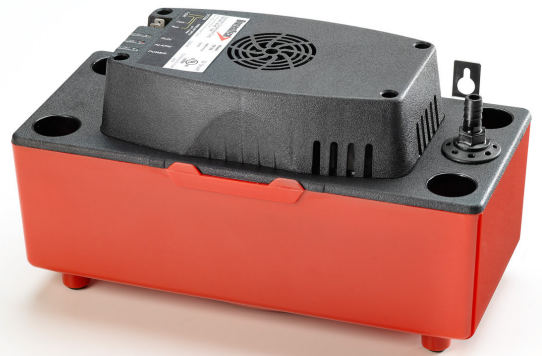
## Package Metrics

Producer of Goods DiversiTech

Domestic/Foreign Commodity Foreign

### SKU Specific Package Metrics

Catalog No.	Description	Lift	UPC	Order Multiple
CP-22	120V	22'	095247091263	6
CP-22T	120V w/tubing	22'	095247091287	6
CP-22-230	230V	22'	095247092994	6
CP-22-230T	230V w/tubing	22'	095247094578	6
CP-22LP	120V low profile	22'	095247094301	6
CP-22LP-230	230V low profile	22'	0095247131280	6
CP-16	120V	16'	095247123988	6
CP-16-230	230V	16'	095247130207	6



# Condensate Pumps