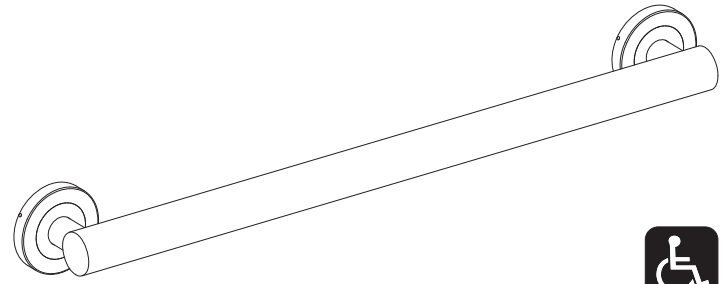




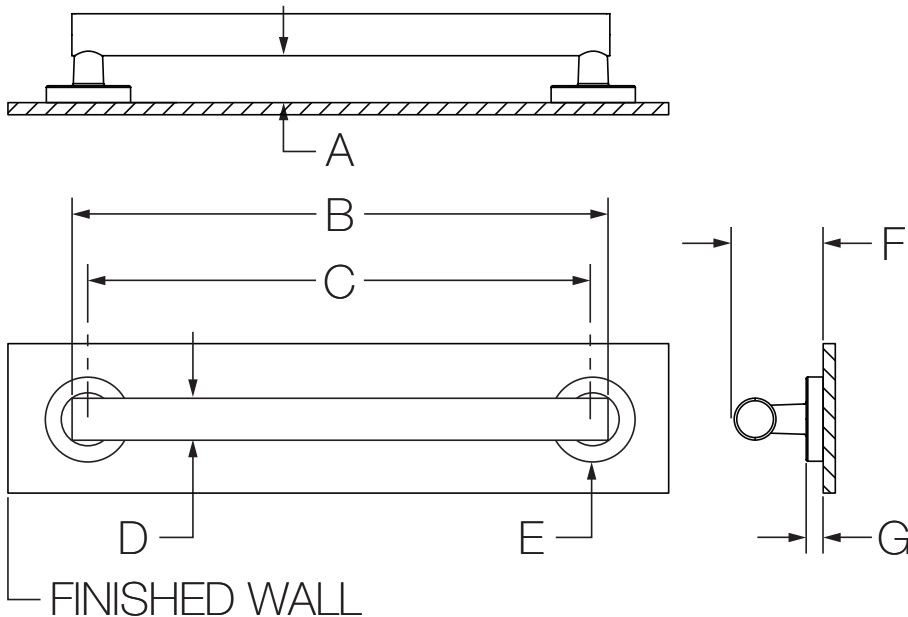
Location:



353GB-12 (18, 24, 36, 42)  
 ADA Grab Bar Series  
**Specification Submittal**

Model Numbers	Specification
<input type="checkbox"/> <b>353GB-12</b> 12" Grab Bar for ADA Applications <input type="checkbox"/> <b>353GB-18</b> 18" Grab Bar for ADA Applications <input type="checkbox"/> <b>353GB-24</b> 24" Grab Bar for ADA Applications <input type="checkbox"/> <b>353GB-36</b> 36" Grab Bar for ADA Applications <input type="checkbox"/> <b>353GB-42</b> 42" Grab Bar for ADA Applications	<ul style="list-style-type: none"> <li>• Supports up to 250 lbs.</li> <li>• 1-1/2" bar diameter</li> <li>• 3" flange diameter</li> <li>• Bar extends 1-1/2" from wall</li> <li>• Concealed mounting for a clean look</li> <li>• Meets WW-P-541/8B Federal Specification for Manufacturing</li> <li>• Meets ADA load requirements when properly installed</li> <li>• Stainless steel construction</li> <li>• Grab bar compatible with Winglts stainless steel grab bar fasteners (p/n GBW40) for drywall applications</li> </ul>
Finish Options	Warranty
<input type="checkbox"/> <b>-STN</b> Satin Nickel finish  <b>Note:</b> Append appropriate -suffix to model number.	<b>Limited Lifetime</b> - to the original end purchaser in consumer/residential installations. <b>5 Years</b> - for industrial/commercial installations. Refer to <a href="http://www.symmons.com/warranty">www.symmons.com/warranty</a> for complete warranty information.

**Dimensions**



Measurements	
A	1-1/2", 38 mm
B	13-1/4", 337 mm ( <b>353GB-12</b> )
	19-1/4", 489 mm ( <b>353GB-18</b> )
	25-1/4", 641 mm ( <b>353GB-24</b> )
	37-1/4", 946 mm ( <b>353GB-36</b> )
C	43-1/4", 1099 mm ( <b>353GB-42</b> )
	12", 305 mm ( <b>353GB-12</b> )
C	18", 457 mm ( <b>353GB-18</b> )
	24", 610 mm ( <b>353GB-24</b> )
	36", 914 mm ( <b>353GB-36</b> )
	42", 1067 mm ( <b>353GB-42</b> )
D	Ø 1-1/2", 38 mm
E	(2x) Ø 3-1/16", 78 mm
F	3-1/16", 78 mm
G	1/2", 13 mm

**Note:** Dimensions subject to change without notice.