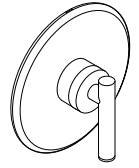




Location:



SHOWER TRIM
MODEL: 0100-3501-L/HD-TRM
SPECIFICATION SUBMITTAL

FEATURE HIGHLIGHTS

Shower Trim shall include metal lever handle and shower arm with decorative flange.
 Shower Trim shall be metal construction plated in standard polished chrome finish.

COMPLIANCE

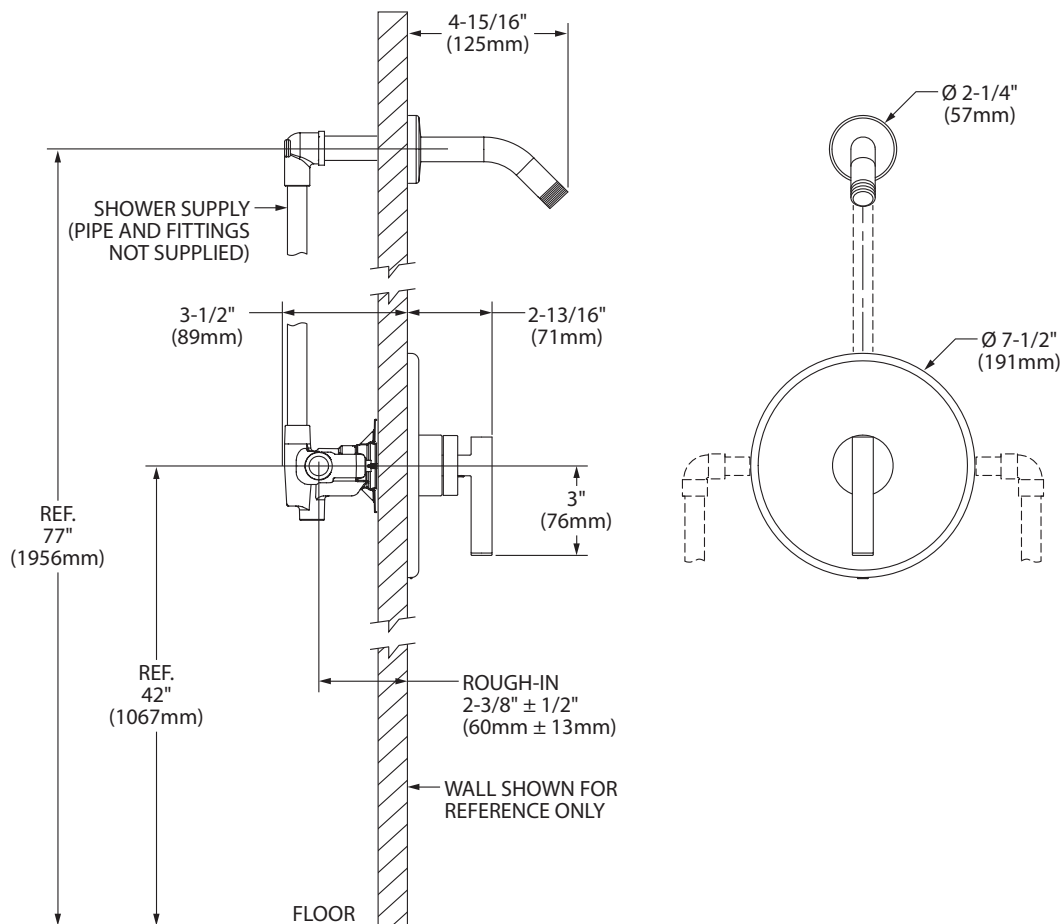
- ASME A112.18.1/CSA B125.1



WARRANTY

5 Years - for industrial/commercial installations.
 Refer to symmons.com/warranty for complete warranty information.

DIMENSIONS



Note: Dimensions subject to change without notice.