

Job Name:

Schedule Reference:

Site:



PLFY-EP30NEMU-E

### GENERAL FEATURES

- Dual set point functionality (\*1)
- New 3D i-see sensor built-in (\*2)
- New stylish and square design - easier to install
- New Draft Save Mode
- Lightweight, low-profile compact design
- Customizable wide airflow pattern with adjustable vane control through unit controller
- Auto wave airflow in heating mode - independent cycling of horizontal and vertical vane positions for even heat distribution
- Built-in condensate lift mechanism; lifts to 33-1/2 in.
- Ventilation air intake supported
- Four-speed
- Auto fan
- IT Terminal plug

**Note: Mitsubishi Electric (MESCA) supports the use of only MESCA supplied and approved accessories for proper functioning of the unit(s). Use of non-MESCA supported accessories will affect warranty coverage.**

### ACCESSORIES:

- Grille..... (Required ordered separately) ..... PLP-40EAEU
- External Heating Adapter ..... PAC-YU25HT
- Multi-function casement ..... PAC-SJ41TM-E
- Fresh-air intake Duct Flange ..... PAC-SH65OF-E
- High efficiency filterelement (MERV 10) ..... PAC-SH59KF-E
- 4-way Cassette Signal Receiver ..... PAR-SR3LA-E
- Simple Remote Controller ..... PAC-YT53CRAU
- Smart ME Controller ..... PAR-U01MEDU
- Wireless Remote Controller ..... PAR-FL32MA
- Wired MA Remote Controller (\*2) ..... PAR-32MAA

### Notes:

- \*1 All components of the system must be compatible. For more details on system compatibility, please refer to Technical Bulletin 100-151 available on our website.
- \*2 Unit comes standard with built-in 3D i-see sensor. 3D i-see sensor functions only available with PAR-32MAA wired remote controller.
- Ventilation air to be introduced independent of or in series with VRF indoor units. Please refer to local codes for the required ventilation rates specific to the application.

Notes:

### SPECIFICATIONS:

Capacity*		Power Input (kW)	Current input (A)
Cooling	Btu/h	30,000	0.04
Heating	Btu/h	34,000	0.40

\* Cooling / Heating capacity indicated at the maximum value at operation under the following conditions:

Cooling | Indoor : 80° F (27° C) DB / 67° F (19° C) WB

Cooling | Outdoor : 95° F (35° C) DB

Heating | Indoor : 70° F (21° C) DB

Heating | Outdoor : 47° F (8° C) DB / 43° F (6° C) WB

### Electrical \*

\* All electrical work shall comply with National (CEC) and local codes and regulations.

Electrical Power Requirements	1-phase, 208 / 230V, 60Hz		
Minimum Circuit Ampacity (MCA)	A	0.57 / 0.57	
Maximum Fuse Size	A	15	

External Dimensions		Unit	Grille
Height	In.(mm)	11-3/4 (298)	1-9/16 (40)
Width	In.(mm)	33-1/8 (840)	37-3/8 (950)
Depth	In.(mm)	33-1/8 (840)	37-3/8 (950)
Net Weight	Lbs.(kg)	55 (25)	11 (5)

External Finish Unit (Grille)	Galvanized steel sheet (MUNSELL (6.4Y 8.9/0.4))
Coil Type	Cross Fin (Aluminum Plate Fin and Copper Tube)

Fan	
Type x Quantity (Drive)	Tubro fan x 1 (Direct drive)
Airflow rate (Low - Mid1 - Mid2 - High)	CFM 636 - 706 - 777 - 812
External Static Pressure	In. WG (Pa) 0.00 (0)
Motor Type (Output kW)	DC motor (0.120)

Air Filter	Polypropylene Honeycomb (Long life filter, anti-bacterial type)
------------	---

Refrigerant Piping Diameter			
Liquid (High Pressure)	In.(mm)	3/8 (9.52)	Flared
Gas (Low Pressure)	In.(mm)	5/8 (15.88)	Flared

Field Drain Pipe Size (O.D.)	In.(mm)	1-1/4 (32)
------------------------------	---------	------------

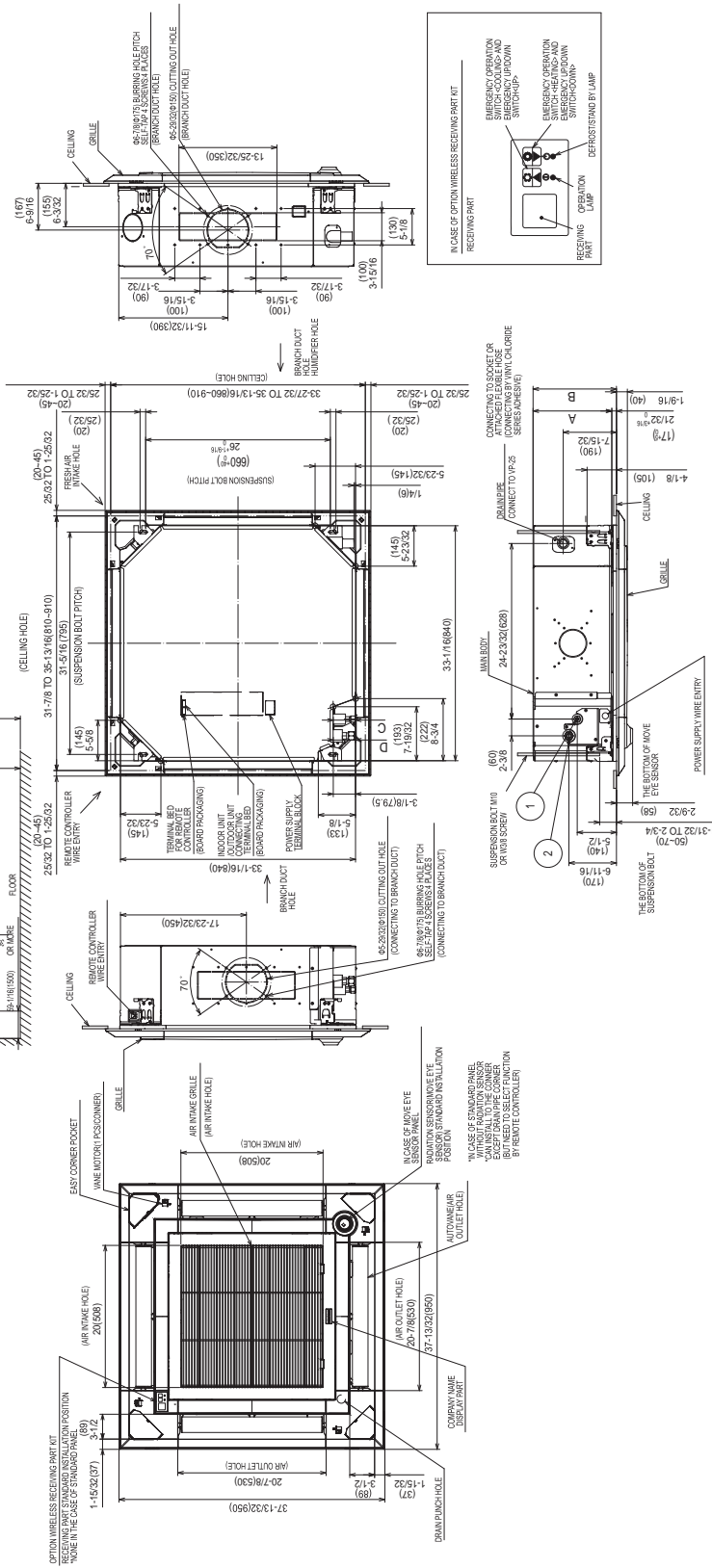
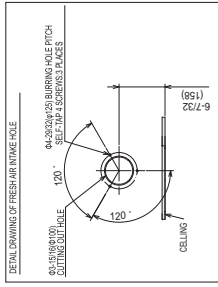
Sound Data (Low - Mid - High) (measured in anechoic room)		
Sound Pressure Level	dB(A)	28 - 31 - 33 - 35

# Model: PLFY-EP30NEMU-E – DIMENSIONS

Unit: in (mm)

Should this document be altered or changed without MESCA's permission, it becomes null and void. MESCA assumes no responsibility for any consequences in such cases.

- NOTE: PLEASE CHOOSE THE GRILLE FROM A STANDARD GRILLE. AUTO-GRILLE.
2. REINFORCE THE SUSPENSION BOLT BY EARTHQUAKE RESISTANCE SUPPORTING MATERIAL, WHICH USING FOR SWING PREVENTION IN ACCORDANCE WITH THE NECESSARY OF EARTHQUAKE RESISTANCE ETC. SPECIALLY IN THE CASE WITHOUT CEILING MATERIAL. CONFIRM REINFORCING MATERIAL.
3. AS FOR SUSPENSION BOLT, PLEASE USE M10 OR M8 (PROCURED AT LOCAL SITE).
4. AS FOR SUSPENSION BOLT, PLEASE USE M10 OR M8 (PROCURED AT LOCAL SITE).
5. AS FOR SUSPENSION BOLT, PLEASE USE M10 OR M8 (PROCURED AT LOCAL SITE).
6. MAKE SURE TO SLACK THE ELECTRICAL WIRE LITTLE BIT FOR CONTROL POWER WIRES CONNECTION.
7. WHEN USING GRILLE WITH HIGH DUCTS, BE SURE TO INSULATE ADEQUATELY. OTHERWISE CONDENSATION AND DRIPPING MAY OCCUR.
8. AS FOR NECESSARY INSTALLATION SERVICE SPACE, PLEASE REFER TO THE RIGHT AT FIGURE. 9. OUTLINE DWG REFER TO EXCLUSIVE OUTLINE DWG WHEN INSTALL OPTION MULTIFUNCTION CASEMENT AND OPTION HIGH PERFORMANCE FILTER.



•CAPACITY OF EACH MODEL AS FOLLOWING  
PLFY-EP30NEMU-E-08/12/15/18/24/30/36/48

EP/NEMU	①	A	B	C	D	E	F
08-18	REFRIGERANT PIPE Ø6.35 FLARED CONNECTION 1/4F	9-1/2 (241)	10-5/32 (258)	3(76)	3(76.5)	10-7/16(265) OR MORE	137-25(23500) OR LESS
24-48	REFRIGERANT PIPE Ø9.52 FLARED CONNECTION 3/8F	11-1/16 (281)	11-23/32 (296)	3-1/8 (79.5)	3-1/8 (79.5)	12(305) OR MORE	177-5(24500) OR LESS



Form # SB\_PLFY-EP30NEMU-E\_201901  
Specifications are subject to change without notice.  
www.MitsubishiElectric.ca  
© 2016 Mitsubishi Electric Sales Canada Inc.

