

Installation Instructions

for use by heating contractor

VIESSMANN

Replacement of Burner Control Unit

LGM 29, Part No. 7134 268

for Vitodens 200

Please file in Service Binder

Safety and Installation Requirements

Please ensure that these instructions are read and understood before commencing installation. Failure to comply with the instructions listed below can cause **product/property damage, severe personal injury, and/or loss of life.**

Working on the equipment

The installation, adjustment, service, and maintenance of this product must be done by a **licensed professional heating contractor** who is qualified and experienced in the installation, service, and maintenance of hot water boilers. There are no user serviceable parts on the boiler, burner, or control.

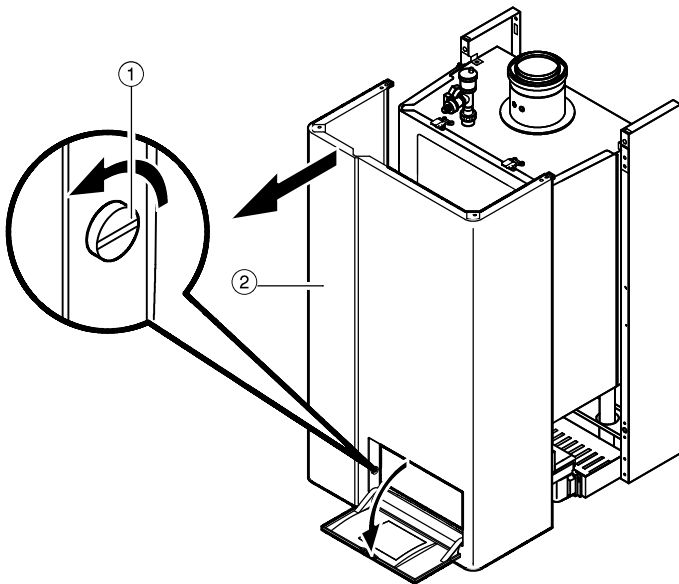
Ensure **main power** supply to equipment, the heating system, and all external controls has been **deactivated**. **Close main gas supply valve.** Take precautions in all instances to avoid accidental activation of power during service work.

It is not permissible to perform service work on any component parts ensuring safe operation of the heating system. When replacing parts, use original Viessmann or Viessmann approved replacement parts.

IMPORTANT

Do not remove clear covers on the circuit board, as these provide protection against static discharge (not packaging!).

Removing Front Enclosure Panel



1. Close main gas supply valve.
2. Open flip-down cover of front enclosure panel (by exerting slight pressure with fingertip) and switch off system on/off switch.
3. Turn off power supply to boiler and ensure that power supply cannot be activated during the duration of the service work.
4. Loosen and remove screw ① holding enclosure panel in place.
5. Remove front enclosure panel ②.

Fig. 1
Removing front enclosure panel

Removing the Circuit Board

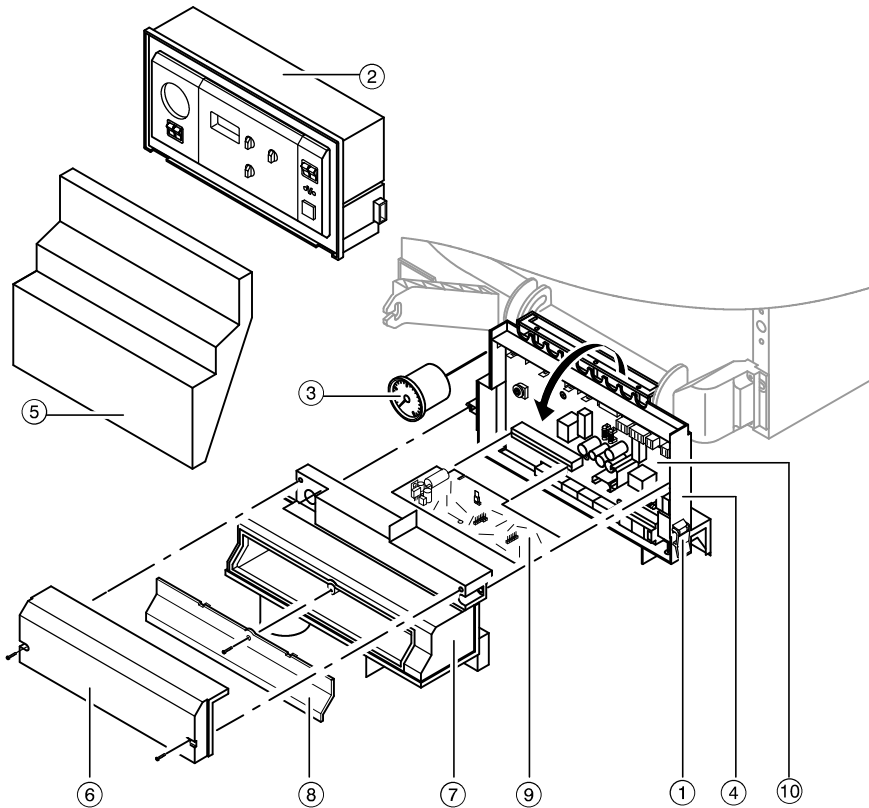


Fig. 2
Removing the circuit board

1. Unlock hooks ① located on both sides of the control unit and remove the control housing ② of the control unit.
2. Remove pressure gage ③.
3. Loosen the two screws located underneath the control unit ④ and carefully fold down the control unit.
4. Remove covers ⑤, ⑥, ⑦ and ⑧.
5. Remove all plug-in connectors and the grounding wire, including #158 plug.

IMPORTANT

Do not discard old circuit board until boiler is completely functionary!

6. Slide off circuit board VR20 ⑨ using the supplied handle.
7. Loosen screws holding installed circuit board LGM 29.22 ⑩ in place and remove carefully.

Setting the Dip Switch

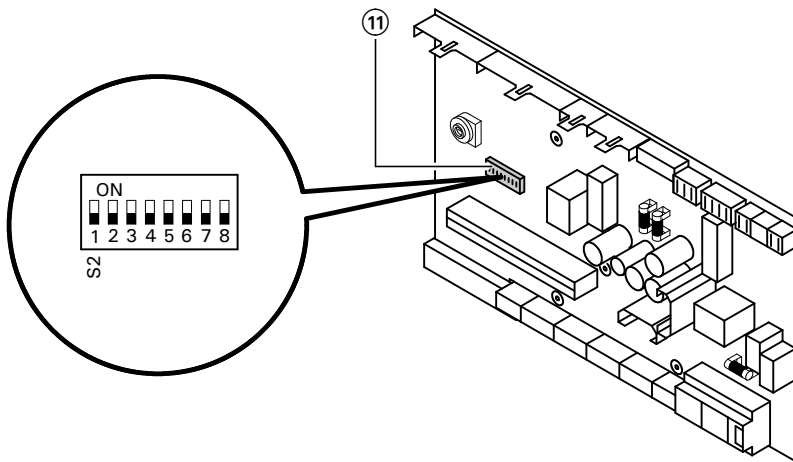


Fig. 3
Setting the dip switch

1. Set dip switch ⑪ setting of the new circuit board according to the table on the following page.

IMPORTANT



The boiler must be operated in accordance with its certification (see boiler rating plate). Thus ensure that the dip switch setting is set according to the table on the following page.

Note that in the factory default setting all switches are set to "OFF".



2. Remove fuse holder from fuse F3 of the removed circuit board LGM 29.22 and install on fuse F3 on replacement circuit board LGM 29.55.

Setting the Dip Switch (continued)

Dip switch setting for Vitodens 200 boiler models WB2-24/32

Boiler model no.	Dip switch setting
WB2 6-24	<div style="border: 1px solid black; padding: 2px;"> ON  </div>
WB2 8-32	<div style="border: 1px solid black; padding: 2px;"> ON  </div>

Dip switch setting for Vitodens 200 boiler models WB2-44/60

Boiler model no.	Dip switch setting
WB2 11-44	<div style="border: 1px solid black; padding: 2px;"> ON  </div>
WB2 15-60	<div style="border: 1px solid black; padding: 2px;"> ON  </div>

Installing the Replacement Circuit Board

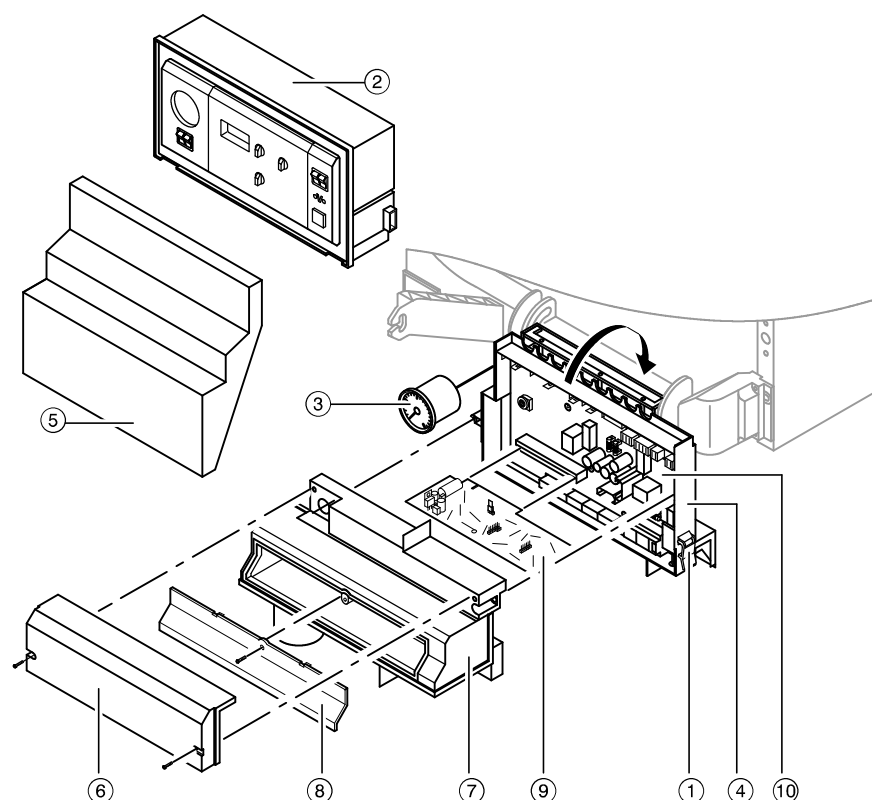


Fig. 4
Installing the replacement circuit board

1. Install new circuit board LGM 29.55 (10).

IMPORTANT

Do not remove clear covers on the circuit board. These provide protection against static discharge.

2. Connect all plug-in connectors to circuit board LGM 29.55 (10), including #158 plug.

IMPORTANT

Do not interchange plug-in connectors "X6" and "X7". None of the other connectors are interchangeable.

3. Install covers (6) and (7).
4. Plug in grounding wire.
5. Insert circuit board VR20 (9).

Installing the Replacement Circuit Board (continued)

6. Install covers ⑧ and ⑤.
7. Fold up control unit ④ and secure, using screws.
8. Insert pressure gage ③ (do not kink capillaries).
9. Mount control housing ② and lock into place with hooks ① located on both sides of the control unit.
10. Reinstall front enclosure panel.
11. Start up boiler and check for proper functioning of the circuit board and the heating system.

Printed on environmentally friendly
(recycled and recyclable) paper.



*Vitodens 200
Start-up/Service
Instructions*

IMPORTANT

If **"FAULT : FE"** or **"A1"** appears in the display of the control unit during the functionality check, check DIP switch settings against table on previous page and adjust if required.

Technical information subject to change without notice.