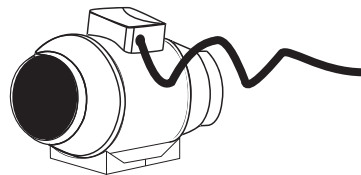


8- Enjoy your SICFLUX MAXX MINI !



THIS FAN WORKS ONLY AT 115V a.c.

CARE OF YOUR FAN:

To keep your fan clean, just a slightly damp cloth and then dry. The propeller must be cleaned regularly so as not to occur the following problems: Loss of the unit's efficiency; Excessive noise level; Loss of life of the apparatus and Loss of warranty. Any Cleaning should be performed with the appliance unplugged/disconnected from the electricity.

WARRANTY TIME:

All MAXX MINI line exhaust fan are warranted to be free from defective materials and workmanship for the period of three (03) years from the date of original purchase. In the event that we find any part is defective the product will be repaired or, in the Company's discretion, replaced without charge provided that the product has been installed in accordance with the enclosed instructions and all applicable EPA Standards and state and local building codes. This product is designed for natural air renewal.

For clothes dryer installation, is recommended use a lint trap and clean the motor every one month to avoid lint clog.

For pool application, based which is a highly aggressive environment, the 03 year warranty is not applied.

IF CLAIMING UNDER WARRANTY

The warranty must be requested by the consumer, by e-mail at cs@sicflux.com. The subject of the message need be: **WARRANTY CLAIM** and the **TEXT**, should report the problem found, the product purchased, the serial number of the product (which is in the box or at a label on the product) and the purchase invoice (**BILL OF SALE**).

WARRANTY VALIDATION : The end user must keep a copy of the Bill Of Sale to verify purchase date.

WARRANTY does not apply to:

- 1- Shipping damage, either concealed or visible. Claims must be filled with the carrier.
- 2- Damage caused by improper installation or improper wiring, including incorrect electrical voltage.
- 3- Product which has been modified
- 4- Damage caused by corrosion, abrasion or severe temperatures
- 5- Product which has the identification label removed or altered
- 6- Product which has been subjected to improper maintenance, abuse, misuse, abnormal usage or accident.

THE ABOVE THREE (03) YEARS WARRANTY IS EXPRESSLY IN LIEU OF ALL OTHER WARRANTIES, EXPRESSED, WRITTEN OR IMPLIED, INCLUDING THE WARRANTIES OR MERCHANTABILITY AND FITNESS FOR USE. IN NO EVENT SHALL SICFLUX CORPORATION BE LIABLE FOR ANY SPECIAL, CONSEQUENTIAL, OR INCIDENTAL DAMAGES, INCLUDING LOSS OF PROPERTY, REVENUES, LOST PROFITS, COST OF REMOVAL, INSTALLATION OR REINSTALLATION.

RECYCLING:

The commitment that we must acquire to future generations requires us to carry out the recycling of materials. Do not forget to recycle the packaging and its remaining elements.

This product has electrical parts and should not be discarded in the trash.



CUSTOMER SERVICE FOR LATIN AMERICA: CUSTOMER SERVICE FOR US/CANADA:
sac@sicflux.com +55 47 3452-3003 cs@sicflux.com 1-855-542-2590

SICFLUX CORPORATION - 201 S. Biscayne Blvd, Ste 1200 - Miami, FL 33131
Manufactured by Sictell Ind e Com Ltda in Brazil



Installation Manual MAXX MINI Line

EN

Congratulations! You have just purchased a SICFLUX product.

READ ALL THE MANUAL BEFORE PERFORMING THE INSTALLATION AND USE

READ AND SAVE THESES INSTRUCTIONS

IMPORTANT SAFETY AND INSTALLATION INSTRUCTIONS

- WARNING : To Reduce The Risk Of Fire Or Electric Shock, Do Not Use this Fan With Any Solid-State Speed Control Device.

- The discharge air is to be directed to the building exterior

- Install in interior wall / Installer dans une paroi intérieure

- Install behind shutters for protection from rain / Installer derrière des volets pour protéger de la pluie

- Not for use in kitchens

- For use in non fire rated installations only

- CAUTION: MONT WITH THE LOWEST MOVING PARTS AT LEAST 2.5 METERS (8.2 FEET) ABOVE FLOOR OR GRADE LEVEL

- Attach Louvers Or Grilles When Installing The Fan

- This fan need to be mounted behind louvers or in a location where the entrance of drawn in water is unlikely.

- To reduce the risk of fire and to properly exhaust air, be sure duct is outside – Do not vent exhaust air into spaces within walls or ceilings or into attics, crawl spaces, or garages.

- WARNING : To Reduce The Risk Of Electrical Shock, Do Not Expose to Water or Rain.

- To get an electronic copy of this manual, please access our website: www.sicflux.com, go to Products » Inline Fans » MAXX MINI and download the INSTALLATION MANUAL.

- Please be careful with the risk of fire, electric shock, or injury to persons, for cleaning and maintenance of this equipment.

- Unplug or disconnect the equipment from power before services.

- WARNING – TO REDUCE THE RISK OF FIRE, ELECTRIC SHOCK, OR INJURY TO PERSONS, OBSERVE THE FOLLOWING: Use this unit only in the manner intended by the manufacturer. If you have questions, contact the manufacturer. Before servicing or cleaning unit, switch power off at service panel and lock the service disconnecting means to prevent power from being switched on accidentally. When the service disconnecting means cannot be locked, securely fasten a prominent warning device, such as a tag, to the service panel.

- CAUTION : For General Ventilating Use Only. Do Not Use To Exhaust Hazardous Or Explosive Materials and Vapors.

- WARNING – TO REDUCE THE RISK OF FIRE, ELECTRIC SHOCK, OR INJURY TO PERSONS, OBSERVE THE FOLLOWING:

a) Installation work and electrical wiring must be done by qualified person(s) in accordance with all applicable codes and standards

b) When cutting or drilling into wall or ceiling, do not damage electrical wiring and other hidden utilities.

c) Ducted fans must always be vented to the outdoors

- Check near the site where the installation will be made has a power point.

- Make sure that the entire installation is done by a competent professional.

- Do not use your appliance in ambient temperatures above 40 ° C / 104°F.

- Do not block the entry and exit of air.

- Never push objects of any kind into the unit through the holes and openings. These objects can reach components that conduct electricity, causing a short circuit, fire or electric shock.

IMPORTANT SAFETY INSTRUCTIONS CONTINUES ON NEXT PAGE ➡

CONTINUATION OF IMPORTANT SAFETY INSTRUCTIONS :

- Your fan has a propeller for air movement. Just connect the fan to energy when installed on your defined location in order to have no possibility of access to propeller in motion, thus avoiding accidents.
- Never let children manipulate electrical equipment.
- Keep children and pets away from packages of any kind.
- Install the outlet side of the fan facing an unoccupied space or to outside.
- This appliance is not intended for use by persons (including children) with physical, sensory or mental capacities reduced, or persons lacking experience and knowledge, unless they have received instructions regarding the use of the device or under the supervision of a person responsible for their safety.
- It is recommended that children be supervised to ensure that they are not playing with the device.
- Make sure the fan is disconnected from the power before performing any maintenance.
- Caution should be exercised to prevent the reverse flow of this device, or installing it in the wrong airflow. Follow the unit's indicator arrow.
- If the power cord are damaged the appliance should be discarded.
- CAUTION: THIS DUCT FAN SHALL BE INSTALLED A MINIMUM OF ONE METER FROM ANY ACESSIBLE OPENING OF THE DUCT
- IMPEDANCE PROTECTED - CLASS B INSULATION
- WARNING: REPLACE DAMAGED BLADE
- WARNING: BLADES CAN INFLICT EYE INJURY
- ATTENTION: CE VENTILATEUR DE CONDUIT DIT ÊTRE INSTALLÉ A AU MOINS UN MÈTRE D'UNE OVERTURE ACCESSIBLE DU CONDUIT.
- ATTENTION: INSTALLER DE SORTE QUE LES PIÈCES INFÉRIEURES SOIENT À AU MOINS 2,5 MÈTRES AU-DESSUS DU PLANCHER OU DU SOL.
- PROTECION THERMIQUE
- AVERTISSEMENT: REMPLACER L'AILETTE ENDOMMAGÉE
- AVERTISSEMENT: L'AILETTE PEUT PRÉSENTER UN DANGER POUR LES YEUX.

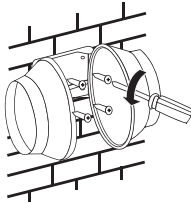
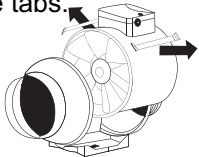
TABLE OF COMMON PROBLEMS

If you have difficulty after trying these suggestions, send us a e-mail to cs@sicflux.com.

PROBLEM	SUGGESTION
My fan does not work	<ul style="list-style-type: none">- Make sure there are no loose wire at the facility.- Check for electricity in wires feed the fan
Having vibration on the product after installation	<ul style="list-style-type: none">- Make sure the product is completed fixed at the local you choose to use the fan.

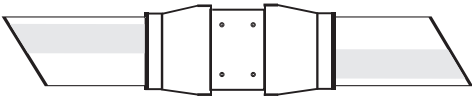
Installation Instructions

1. Remove the product from the box.
2. Remove the exhaust engine body, removing the side tabs.

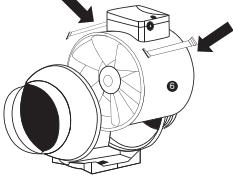


3. Secure the base to a fixed structure by the screws.

4. Install the ducts at the inlet and at the outlet.

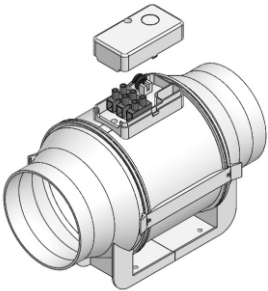


5. Replace the engine body on the fan, holding the side tabs

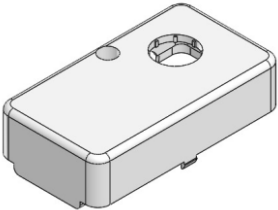


6. Electrical Wiring

Run 120 V AC house wiring to the location of the fan. Follow the steps below and all local electrical and safety codes. NEVER place a switch where it can be reached from a tub or shower.

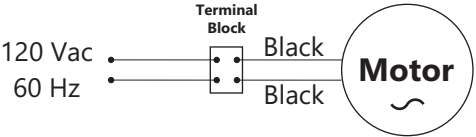


- A. Remove the electrical box cover.



- B. Remove the cap at the electrical box cover for the passage of the hard wire.

- C. Pass the hard wire in to the electrical box cover and connect at the terminal block. The max. tightening torque value at the terminal block is 4.4 Lbf-in or 5.07 Nm / Kgf-cm.



- D. Leave all the electrial wire inside the electrical box.
E. Close the electrical box cover with the provided screws.

- 7- Insert the smaller screws removed from the bag to holding the side tabs.

