



SharkBite® Frost Free Silcocks

DESCRIPTION

SharkBite® frost free silcocks are outdoor hose faucets for use in residential or commercial applications.

FEATURES AND BENEFITS

Instant push-fit connection for increased ease-of use:
No soldering, clamps, unions, or glue required.

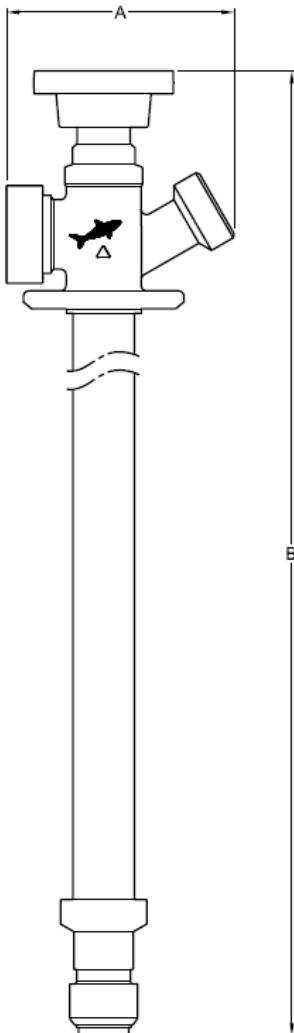
Backflow protection:
 Integrated anti-siphon vacuum breaker

Freeze resistant
Automatic drain feature

Integral tube liner for PEX installations:
Means no loose components and ensures a secure, reliable connection.



DIMENSIONAL DATA



SKU	Description	A	B
24628LF	1/2" X 3/4" MHT 8"	3.14	13.38
24629LF	1/2" X 3/4" MHT 10"	3.14	15.38
24636LF	1/2" X 3/4" MHT 12"	3.14	17.38
24637LF	1/2" X 3/4" MHT 15"	3.14	20.38
24638LF	1/2" X 3/4" MHT 18"	3.14	23.38



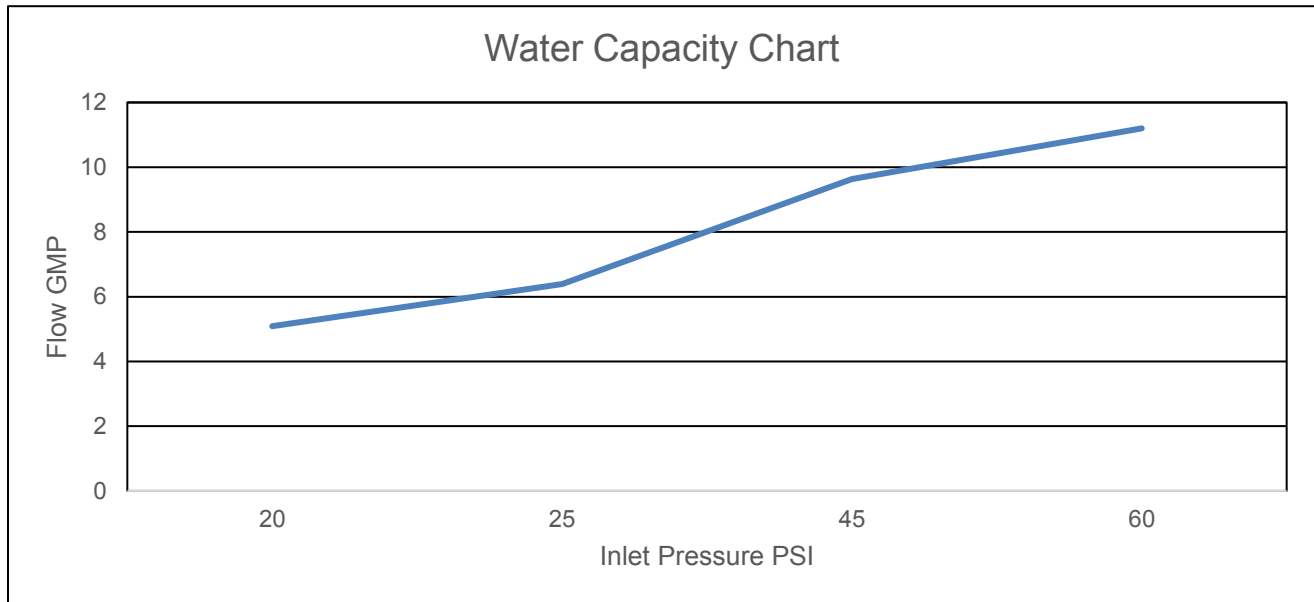


SharkBite® Frost Free Silcocks

PERFORMANCE DATA

Pressure and Temperature Performance:

- Max working pressure 125 psi
- Max working temperature 180°F
- Min working temperature 33°F



Material:

- Hose bibbs are approved for potable water and glycol (up to 100% mix)

Valve Material:

- Tube Chrome Plated Lead Free DZR Brass
- Body Chrome Plated Lead Free DZR Brass
- O-ring EPDM
- Grab Ring Stainless Steel Grade 316
- Tube Support Liner Veradel
- Fitting DZR Lead Free Brass
- O-Ring EPDM
- Washer EPDM
- Screw SST
- Stem Tube DZR Lead Free Brass
- Joint Sleeve DZR Lead Free Brass
- Washer SST

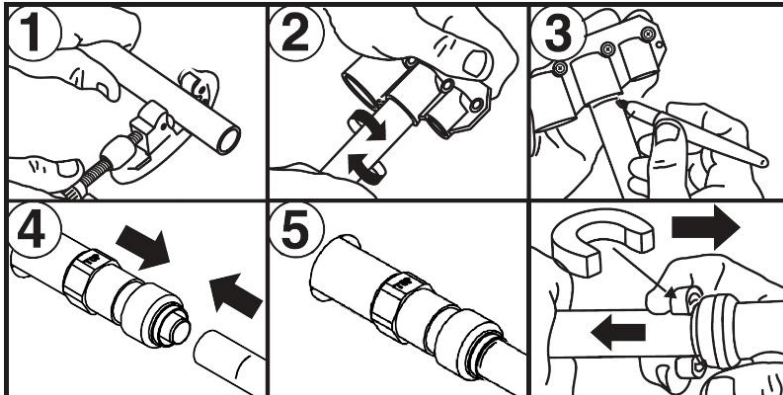
Compatible pipes:

- Frost Free Silcocks are approved for use ASTM F876/CSA B137.5 PEX, ASTM B88 Type K, L and M and copper, ASTM D2846/CSA B137.6 CPVC, and ASTM F2769 PE-RT

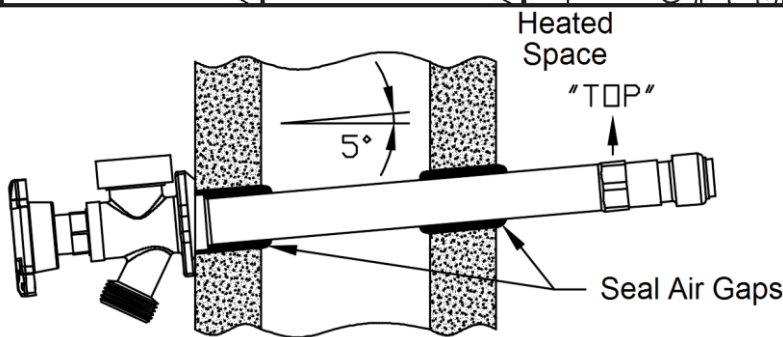


SharkBite® Frost Free Silcocks

TYPICAL INSTALLATION



1. Cut Pipe squarely
2. Deburr and clean pipe
3. Mark pipe to insertion depth
4. Insert pipe into frost free silcock to depth mark
5. Feed frost free silcock and pipe through the wall and connect to plumbing system
6. Use disconnect clip to remove if needed
7. Seal all air gaps and install valve at a 5° angle



CERTIFICATIONS

SharkBite hose bibbs are approved for use in all national and local codes in the US and Canada. Certified and listed to the following standards:

- **ASSE 1019** – Performance Requirements for Wall Hydrant with Backflow Protection and Freeze Resistance
- **ANSI/NSF 61** – Drinking Water System Components – Health Effects
- **ANSI/NSF 372** – Drinking Water Components – Lead Content

SPECIFICATION

- The tube shall be inserted into the SharkBite® push-to-connect (PTC) fitting in the first stage through a release collar and then through a stainless steel grab ring. The grab ring has teeth that open and grip onto the tube. At the second stage the tube shall be pushed through an O-ring protector which aligns the tube. A specially formulated EPDM O-ring shall be compressed between the wall of the fitting and the tube before the end of the tube reaches the tube stop. Only when the tube has passed through the O-ring and reached the tube stop shall a secure joint be created. The fitting shall be a SharkBite PTC fitting.

Job Name:	
Job Location:	
Engineer	
Contractor:	
Tag:	

