

Exotic Alloy Flange

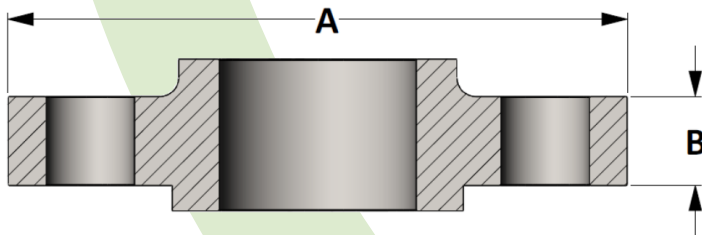
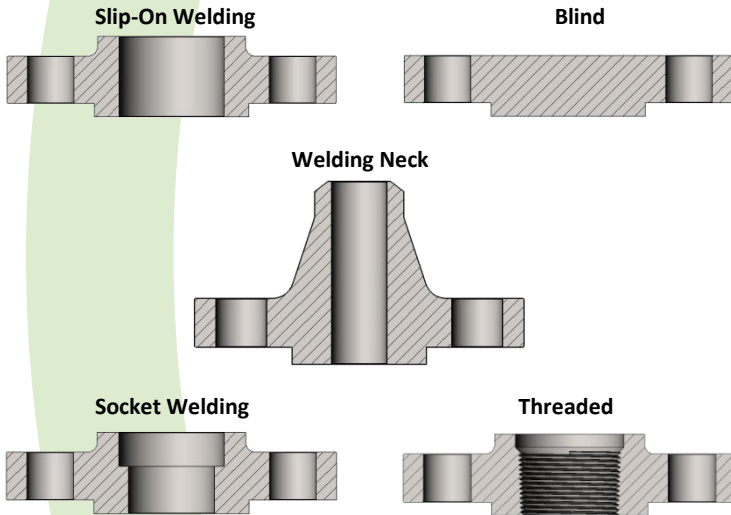
Specification: ASME B16.5
Also available in API 6A

Material: Available in all Alloy Steels and Non-ferrous metals certified to ASTM, ASME, and Military standards.

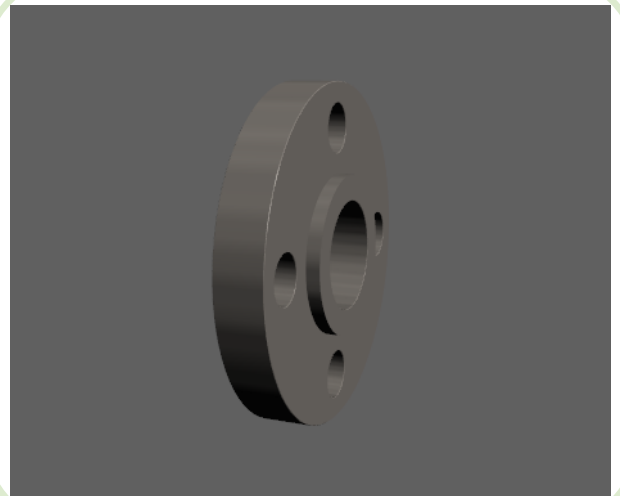
Sizes: 1/2" – 24" in CL 150, 300, 400, 600, 900, 1500
and 1/2" – 12 in CL 2500
also available in reducing pipe sizes.

Available as raised face or ring type joint (RTJ).
Flange facing can be smooth, serrated concentric, or serrated spiral.

Types of Flanges



**Active
3D
Model**



All dimensions are in inches

PIPE SIZE	CL 150		CL 300		CL 600		CL 1500		CL 2500	
	A	B	A	B	A	B	A	B	A	B
1/2	3.500	0.375	3.750	0.500	3.750	0.563	4.750	0.875	5.250	1.188
3/4	3.875	0.438	4.625	0.563	4.625	0.625	5.125	1.000	5.500	1.250
1	4.250	0.500	4.875	0.625	4.875	0.688	5.875	1.125	6.250	1.375
1-1/4	4.625	0.563	5.250	0.688	5.250	0.813	6.250	1.125	7.250	1.500
1-1/2	5.000	0.625	6.125	0.750	6.125	0.875	7.000	1.125	8.000	1.750
2	6.000	0.688	6.500	0.813	6.500	1.000	8.500	1.500	9.250	2.000
2-1/2	7.000	0.813	7.750	0.938	7.500	1.125	9.625	1.625	10.500	2.250
3	7.500	0.875	8.250	1.063	8.250	1.125	10.500	1.875	12.000	2.625
3-1/2	8.500	0.875	9.000	1.125	9.000	1.375	---	---	---	---
4	9.000	0.875	10.000	1.188	10.750	1.500	12.250	2.125	14.000	3.000