

HIBISCUS

IN-WALL SHOWER DIVERTER

SKU: 948902



FEATURES

- Shape: Square
- Handle Type: Lever
- Assembly Required: No
- Installation Type: Wall
- Metal Handle
- Metal Escutcheon
- Not Intended as a Shut Off Valve
- Six Total Settings Allow For Shared Water Flow Between Outlets, Giving You the Ability to Use Two Functions at Once
- Optional Rough-In Valve

SIGNATURE HARDWARE Lifetime Warranty

See website for detailed warranty information.

CONTENTS

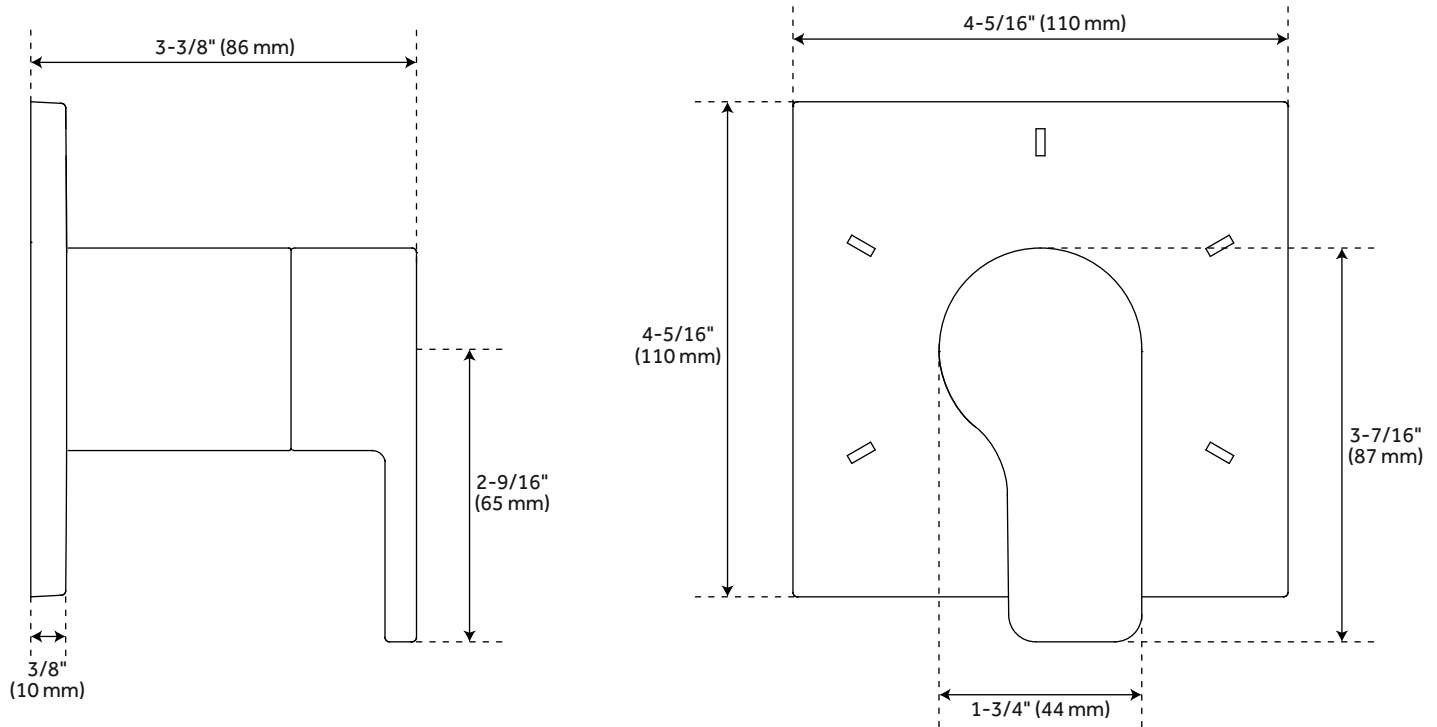
DIVERTER	PAGE 2
VALVE	PAGE 3

REVISED 01/16/2020

HIBISCUS

IN-WALL SHOWER DIVERTER

SKU: 948902



FEATURES

Material: Brass
Width: 4-5/16"
Height: 4-5/16"
Depth: 3-3/8"
NPT Connection: 3/4"

CODES/STANDARDS

cUPC
ASME A112.18.1/CSA B125.1
ICC/ANSI A117.1 (when installed according
to ADA standards)
Massachusetts Accepted

SIGNATURE HARDWARE LIFETIME WARRANTY

See website for warranty information



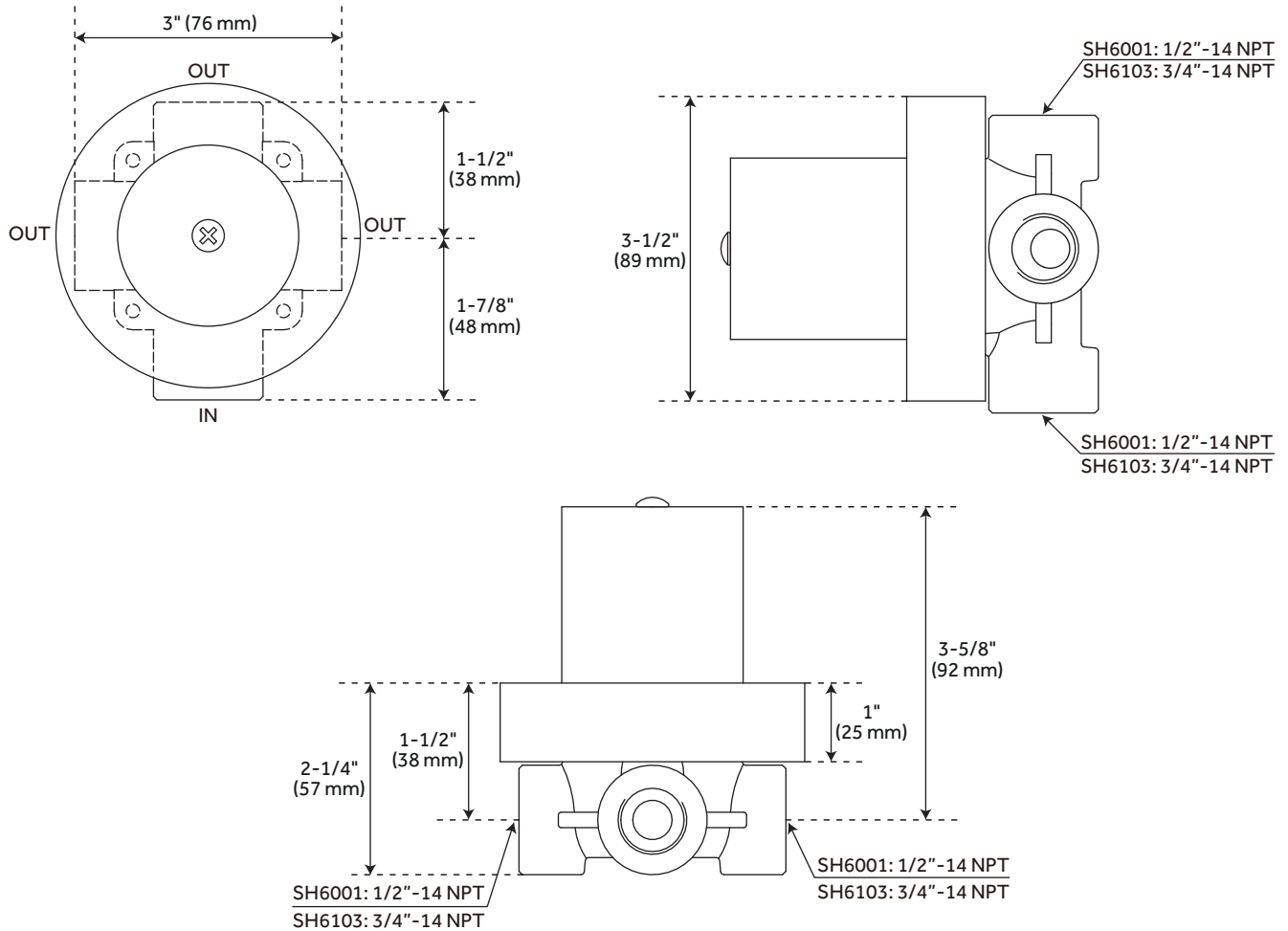
All dimensions and specifications are nominal and may vary. Use actual products for accuracy in critical situations.

PAGE 2
Code: SHHB9005BN/SHHB9005CP/SHHB9005MB

HIBISCUS

OPTIONAL 3-WAY IN-WALL DIVERTER ROUGH-IN VALVE

SKU: 948902



FEATURES

Material: Brass
NPT Connection: 3/4"
Available Single-Function Diverter Valve
Cartridge Restricts Water Flow
to One Outlet at a Time
Ceramic Cartridge
Must Be Installed in Accordance With
Provided Installation
Instructions

CODES/STANDARDS

cUPC
ASME A112.18.1/CSA B125.1
Massachusetts Accepted

SIGNATURE HARDWARE LIFETIME WARRANTY

See website for warranty information



All dimensions and specifications are nominal and may vary. Use actual products for accuracy in critical situations.

PAGE 3
Code: SH6103