

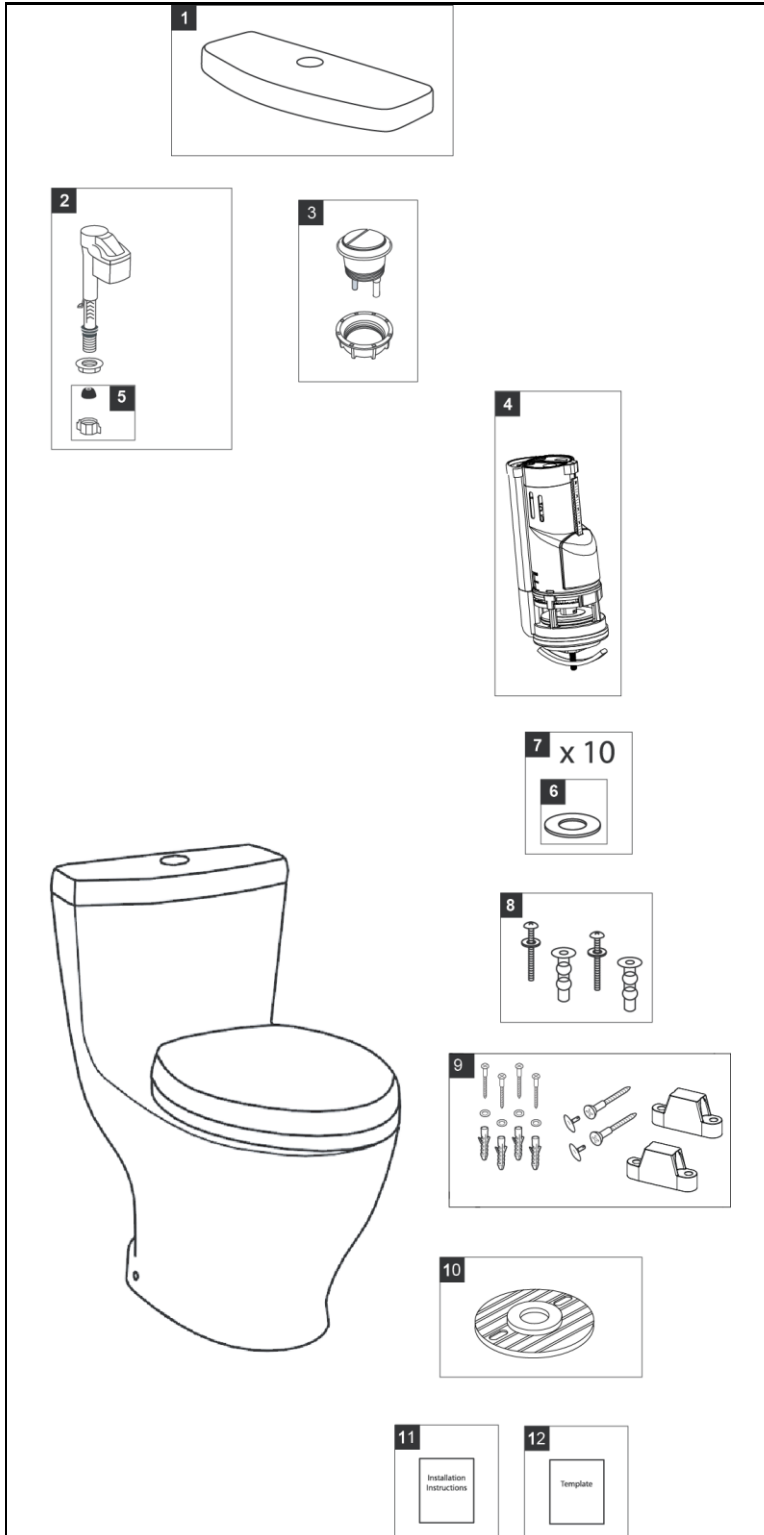
MS654204MF & MS654114MF

MS654204MF
CST654MF

MS654114MF
CST654MF

Aquia®

1.6 & 0.9 Gpf Toilet, Elongated, Dual-Max®, 12" Rough-In, Universal Height



Item	Part	Description
1	TCU654CR#01	Tank Lid w/ Velcro Tape - Cotton
	TCU654CR#03	Tank Lid w/ Velcro Tape - Bone
	TCU654CR#11	Tank Lid w/ Velcro Tape - Colonial White
	TCU654CR#12	Tank Lid w/ Velcro Tape - Sedona Beige
	TCU654CR#51	Tank Lid w/ Velcro Tape - Ebony
2	TSU99A.X	Fill Valve Assembly
3	THU340#01	Push Button Assembly - Cotton
	THU340#CP	Push Button Assembly - Chrome Plated
	THU340#BN	Push Button Assembly - Brushed Nickel
	THU340#PN	Push Button Assembly - Polished Nickel
4	THU338	Flush Valve
5	THU213	Parts Bag Assembly
6	9BU088E	Flush Valve Gasket (1 piece)
7	THU348	Flush Valve Gaskets (10 pieces)
8	THU651N	Top Mounting Hardware
9	THU427#01	Toilet Mounting Hardware -for #01 or #11
	THU427#03	Toilet Mounting Hardware
	THU427#12	Toilet Mounting Hardware
	THU427#51	Toilet Mounting Hardware
10	THU291	Socket Rough In
11	0GU069	Installation Instruction & Owner's Manual
12	0GU170	Template

Note:

Product Number Explanations

One-Piece Toilet

(MS) Toilet & Seat Combination
(CST) Gravity Type Toilet
(654) Toilet Model
(204) Seat Model
(114) Seat Model
(M) Dual-Max®
(F) Universal Height

Colors

(#01) Cotton
(#03) Bone
(#11) Colonial White
(#12) Sedona Beige
(#51) Ebony

Actual Product may vary slightly from illustration.