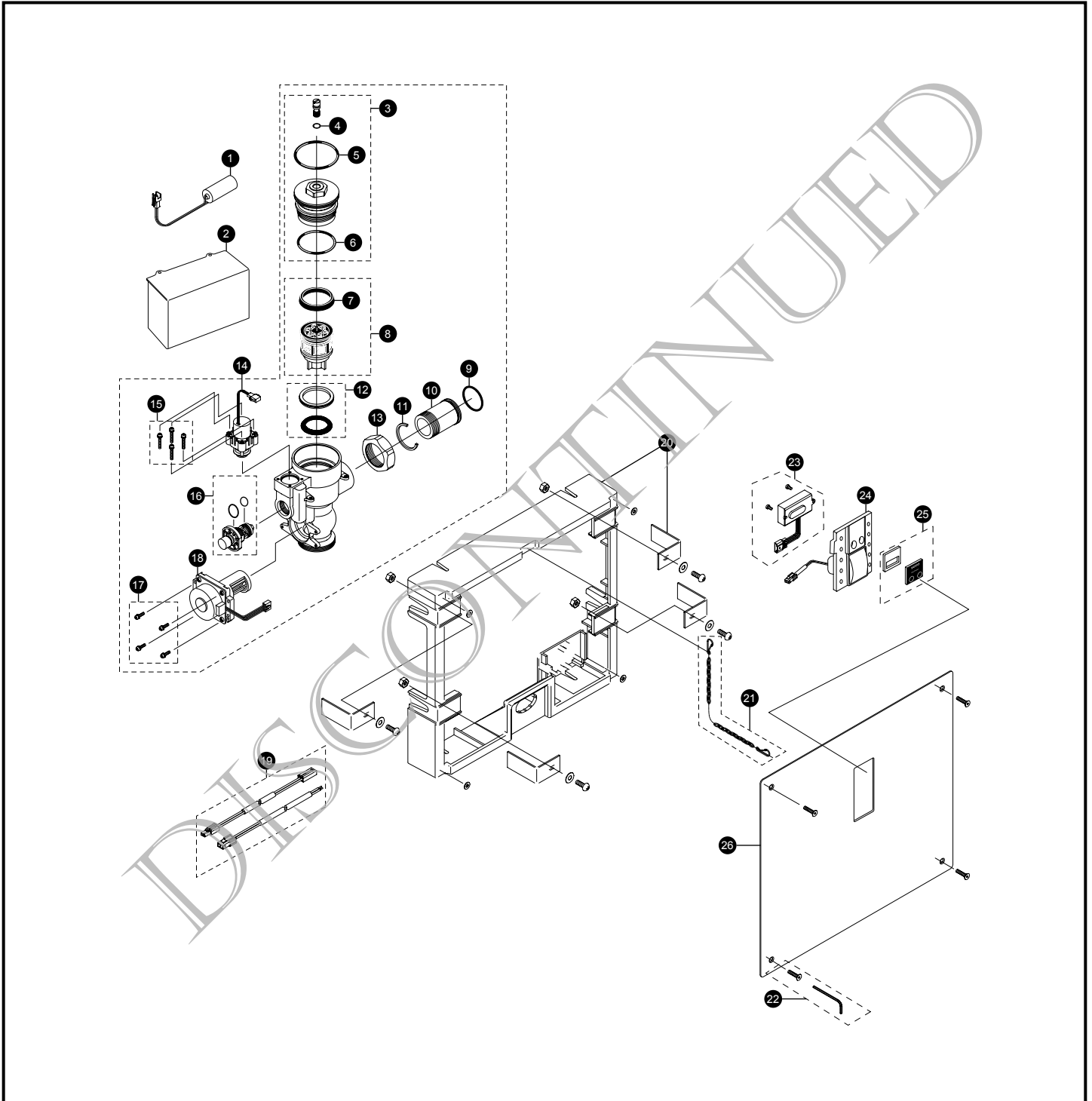


# TEU2GN#SS Series

TEU2GN11#SS  
TEU2GN21#SS  
TEU2GN#SS

## EcoPower® Sensor Urinal Flush Valve Concealed (14" x 12") - 1.0 Gpf Hydro-Power Charge



# TEU2GN#SS Series

TEU2GN11#SS  
TEU2GN21#SS  
TEU2GN#SS

## EcoPower® Sensor Urinal Flush Valve Concealed (14" x 12") - 1.0 Gpf Hydro-Power Charge

Item	Part	Description	Item	Part	Description
1	THP3053	Back-Up Battery	<b>Vacuum Breaker Sets</b>		
2	TH559EDV549	Urinal Valve Controller	VB13RB-11		Concealed - Back Spud (3/4" Outlet)
3	TH559EDV508	Valve Cap Assy (Urinal 1.0/0.5 GPF)	VB13RB-21		Concealed - Back Spud (1-1/4" Outlet)
4	TH305SV111	O-Rings (Cap Screw) (10 Pieces)	<b>Note:</b> For additional information, refer to the individual vacuum breaker parts sheets.		
5	TH305SV120	O-Rings (Valve Cap) (10 Pieces)			
6	TH305SV112	O-Rings (Valve Guide) (10 Pieces)			
7	TH305SV103	U-Packing (For Piston) (10 Pieces)			
8	TH323V104R	Piston Assembly (1.0/0.5 GPF)			
9	TH305SV106	O-Rings (Tail Piece) (10 Piece)			
10	TH305SV114	Tail Piece			
11	TH305SV105	Locking Rings (10 Piece)			
12	TH321	Seal Washer Kit			
13	TH305SV113	Nut			
14	TH559EDV510	Solenoid Unit & Diaphragm Assy			
15	TH559EDV301	Double Sems Screws M3 (4 Pieces)			
16	TH559EDV558	Manual Flushing Button			
17	TH559EDV505	Double Sems Screws M3 (4 Pieces)			
18	TH559EDV504	Hydro-Power Generator (Urinal)			
19	TH559EDV556	Extension Wire Set			
20	TH559EDV341	Wall Frame			
21	TH559EDV345	Chain Set			
22	8HU5019	4 Vandal Resist Screws With Wrench			
23	TH559EDV550	Sensor Controller & Screws Set			
24	TH559EDV552	Touch Button Assembly Unit			
25	TH559EDV553	Cover Glass			
26	TH559EDV554	Big Cover Plate			

### Product Number Explanations

#### Flush Valve

(T) Fitting  
(E) Electronic  
(U) Urinal 1.0  
(2) Concealed Large Plate  
(G) Dynamo (Hydro Generator)  
(N) Neutral Rough-In  
(11) 3/4" Outlet Back Spud  
(21) 1-1/4" Outlet Back Spud  
(#SS) Stainless Finish