



## INSTALLATION, OPERATION & MAINTENANCE INSTRUCTIONS

1455 Kleppe Lane ♦ Sparks, NV 89431-6467 ♦ (775) 359-4712 ♦ Fax (775) 359-7424  
E-mail: [haws@hawsco.com](mailto:haws@hawsco.com) ♦ website: [www.hawsco.com](http://www.hawsco.com)

No. 0580001169 (1)

### **MODELS 3602 & 3602FR** **Outdoor Drinking Fountain**

**NOTE TO INSTALLER:** Please leave this information with the Maintenance Department.

#### **LIMITED WARRANTY**

HAWS warrants that this specific product is guaranteed against defective material or poor workmanship for a period of **one year from date of shipment**. HAWS liability under this warranty shall be discharged by furnishing without charge F.O.B. HAWS Factory any goods, or part thereof, which shall appear to the Company upon inspection to be of defective material or not of first class workmanship, provided that claim is made in writing to Haws within a reasonable period after receipt of the product. Where claims for defects are made, the defective part or parts shall be delivered to the Company, prepaid, for inspection. HAWS will not be liable for the cost of repairs, alterations or replacements, or for any expense connected therewith made by the owner or his agents, except upon written authority from HAWS, Sparks, Nevada. HAWS will not be liable for any damages caused by defective materials or poor workmanship, except for replacements, as provided above. Buyer agrees that HAWS shall not be liable for general, special, or consequential damages claimed to arise under the contract of sale. The drinking fountain manufactured by HAWS is warranted to function if installation and maintenance instructions provided are adhered to. The units also must be used for the purpose for which they were intended.

**NO OTHER WARRANTIES EXPRESSED OR IMPLIED ARE AUTHORIZED,  
PROVIDED OR GIVEN BY HAWS.**

**SHOULD YOU EXPERIENCE DIFFICULTY WITH THE INSTALLATION OF THIS  
MODEL PLEASE CALL:**

**TECHNICAL SUPPORT: 1-800-766-5612**

**FOR CUSTOMER SERVICE: 1-888-640-4297**

**RECOMMENDED TOOLS:**

- Measuring Tape
- PVC Pipe Cutter
- Plastic Tubing Cutter
- PVC Solvent Weld Glue
- ¼" Bit-Holding Screwdriver
- Level
- 10" Pipe Wrench
- Adjustable Plier
- 1/8 and 5/32 Tamper Resistant Hex Bits (Supplied)
- 9/16" and 5/8" Box/Open Combination Wrenches, 8" Max Length
- 3/8" Socket Wrench/Ratchet, 8" Max Length
- 9/16" Deep Socket
- 15/16" Socket

**LOCATION OF UNIT:** The Model 3602/3602FR Bottle Filler / Fountain can be installed and assembled to be ADA accessible by first locating the pedestal base with at least 8 inches of clear unobstructed hardscape behind the pedestal. Provide hardscape that is at least 74 inches wide. When the right pedestal arm is installed in the high orientation, the height dimensions shown on the model specification sheet meet current Federal Americans with Disabilities Act (ADA) wheelchair requirements. When a fountain is installed on top of the pedestal, the height dimensions shown on the model specification sheet meet current ADA standing height requirements. When installing this unit, local, state and federal (including ADA) codes must be adhered to. If height other than shown is required, then dimensions must be adjusted accordingly.

**SUPPLY LINE:** The minimum recommended line size is 1/2"IPS with 30-90 psi (2-6 ATM) flowing pressure. Where sediment or mineral content is a problem, an inlet filter is recommended.

**PLUMBING CONNECTIONS:** Water supply inlet connection is a 3/8"O.D. compression fitting. Waste outlet is 1-1/2" PVC pipe. Plumbing connections vary depending on how the unit is configured during assembly. Please consult the installation drawings below for supply and waste fitting arrangements and assembly for your specific model.

**MAINTENANCE: For 3602 models-** Periodically clean the pushbutton valve strainer. Refer to 5874 Series Valve Operation and Maintenance Sheet for more information.

**For 3602FR models-** Refer to 6518 Operation and Maintenance Sheet for more information.

## INSTALLATION PROCEDURE

Follow the installation procedures outlined in the installation diagrams for your specific model below. Note: 3602FR versions must be connected to Haws Model 6518 series freeze resistant bury valve(s), sold separately. See 6518 installation manual for instructions.

**GENERAL NOTES:**

1. **For all compression fitting connections, only connect NSF-61 copper or plastic 3/8" outside diameter tubing. The following assembly instructions must be followed to ensure a watertight connection:**
  - a. **Cut tubing square and clean. Deburr if necessary.**
  - b. **Place compression nut and ferrule over end of tubing.**
  - c. **For plastic tubing (must be ¼" inside diameter), insert supplied tubing insert into end of tubing.**

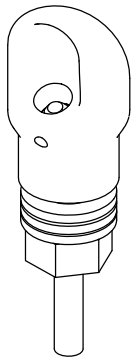
- d. Push tube into the fitting until it bottoms out.
- e. Thread nut onto fitting and tighten snugly with 5/8" wrenches.

Tube Sizes	O.D. Tolerance	Insertion Depth
3/8"	±.005"	3/4"

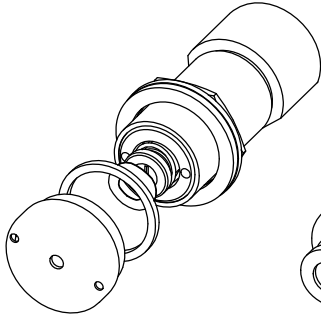
TROUBLESHOOTING	
PROBLEM	REPAIR CHECKLIST
1. Insufficient bubbler flow (From Drinking Fountain)	<ol style="list-style-type: none"> <li>1a. Verify minimum 30 psi flowing supply pressure.</li> <li>b. For 3602- Check that inlet screwdriver stop valve is wide open. Clean inlet strainer or adjust valve to increase flow. See 5874 Series Valve Manual*.</li> <li>c. For 3602FR- Adjust valve to increase flow. See 6518FR Manual*.</li> </ol>
2. Insufficient bottle filler flow	<ol style="list-style-type: none"> <li>2a. Nozzle strainer is clogged. Use nozzle removal tool to remove strainer and replace. Replacement strainers may be ordered by calling Customer Service.</li> <li>b. For 3602- Check that inlet screwdriver stop valve is wide open. Clean inlet strainer or adjust valve to increase flow. See 5874 Series Valve Manual.*</li> <li>c. For 3602FR- Adjust valve to increase flow. See 6518FR Manual.*</li> </ol>

\*For more information about Haws products, see our website: [www.hawscow.com](http://www.hawscow.com)

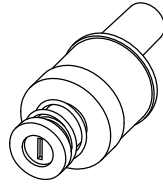
## REPLACEMENT PARTS DRINKING FOUNTAIN



**MODEL 5703M  
BUBBLER HEAD**

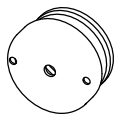


**MODEL 5874PB  
PUSHBUTTON  
(NON FR MODELS)**

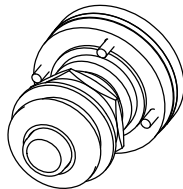


**MODEL VRK5874  
VALVE REPAIR KIT  
(NON FR MODELS)**

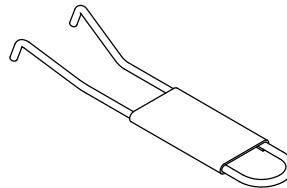
## REPLACEMENT PARTS ALL MODELS



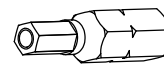
**MODEL PBA7  
BUTTON ASSEMBLY  
(NON FR MODELS)**



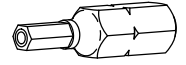
**MODEL 5881PBA  
BUTTON ASSEMBLY  
(FR MODELS)**



**0006983506  
SPANNER WRENCH  
(NON FR MODELS)**

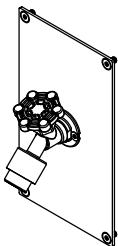


**0510001030  
HEX BIT,  
PINNED, 5/32"**

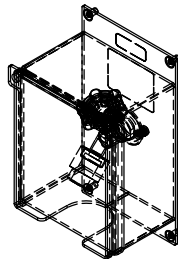


**0510001029  
HEX BIT,  
PINNED, 1/8"**

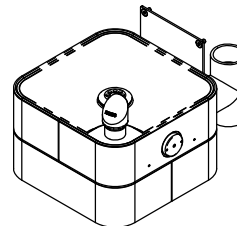
## OPTIONAL ACCESSORIES



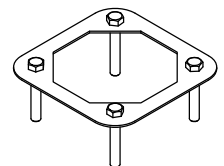
**MODEL 3661 HOSE BIB  
(NOT FREEZE RESISTANT)**



**MODEL 3660 LOCKABLE HOSE BIB  
(NOT FREEZE RESISTANT)**



**MODEL 3670 DOG BOWL  
(NOT FREEZE RESISTANT)**



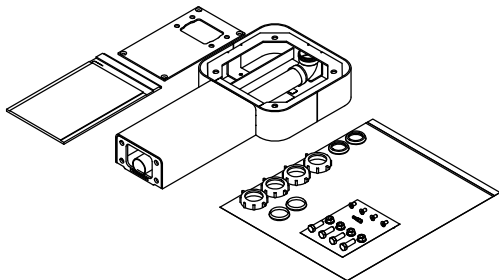
**MODEL MTG.3600  
INSTALLATION AID**

## 3602 / 3602FR MODULAR OUTDOOR FOUNTAIN SYSTEM PARTS BREAKDOWN

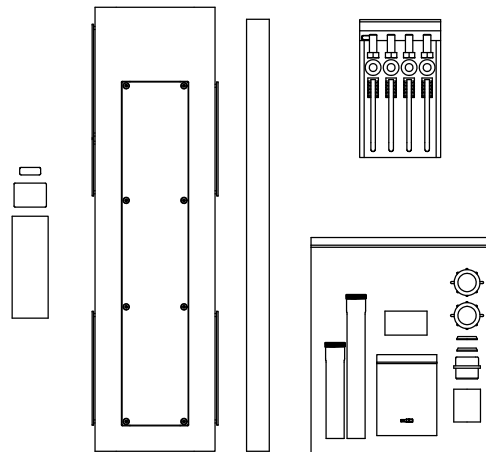
WHEN ORDERING PARTS, PLEASE  
SPECIFY PART NUMBER

		1455 KLEPPE LANE SPARKS, NEVADA 89431 (775) 359-4712 FAX (775) 359-7424 E-MAIL: HAWS@HAWS.CO.COM WEBSITE: WWW.HAWS.CO.COM	
ECN: 5652	REV. ECN: 5652	BY: DP	MODEL(S)
DRAWN: DHP	DATE: 6/11/20	CHKD: FV	3602 / 3602FR
APPROVED: FV	DATE: 03/18/21	SCALE: 1:2	DRAWING TYPE: PARTS BREAKDOWN
		SIZE: A	SHEET 1 OF 2
		PART NUMBER 0580001169	REVISION 1

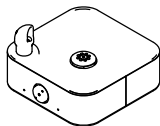
## AVAILABLE SUB COMPONENT MODELS



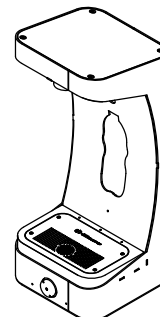
MODEL 3671 PEDESTAL ARM ASSEMBLY



MODEL 3674 PEDESTAL ASSEMBLY



MODEL 3680 OR 3680FR\* FOUNTAIN ASSEMBLY




MODEL 3690 OR 3690FR\* BOTTLE FILLER ASSEMBLY

**3602 / 3602FR  
MODULAR OUTDOOR  
FOUNTAIN SYSTEM**

\*FR (FREEZE RESISTANT) MODELS REQUIRE THE USE OF SEPARATE FREEZE RESISTANT VALVES (NOT SUPPLIED). SEE INSTALLATION DRAWINGS ON THE FOLLOWING PAGES FOR DETAILS.

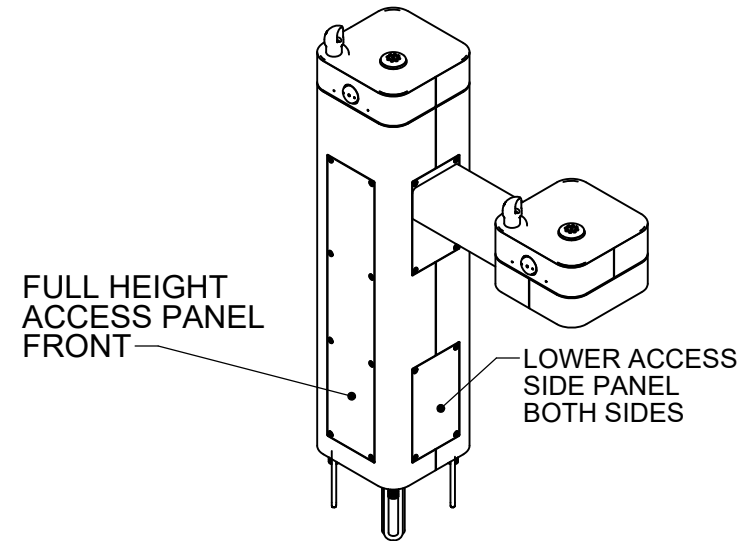
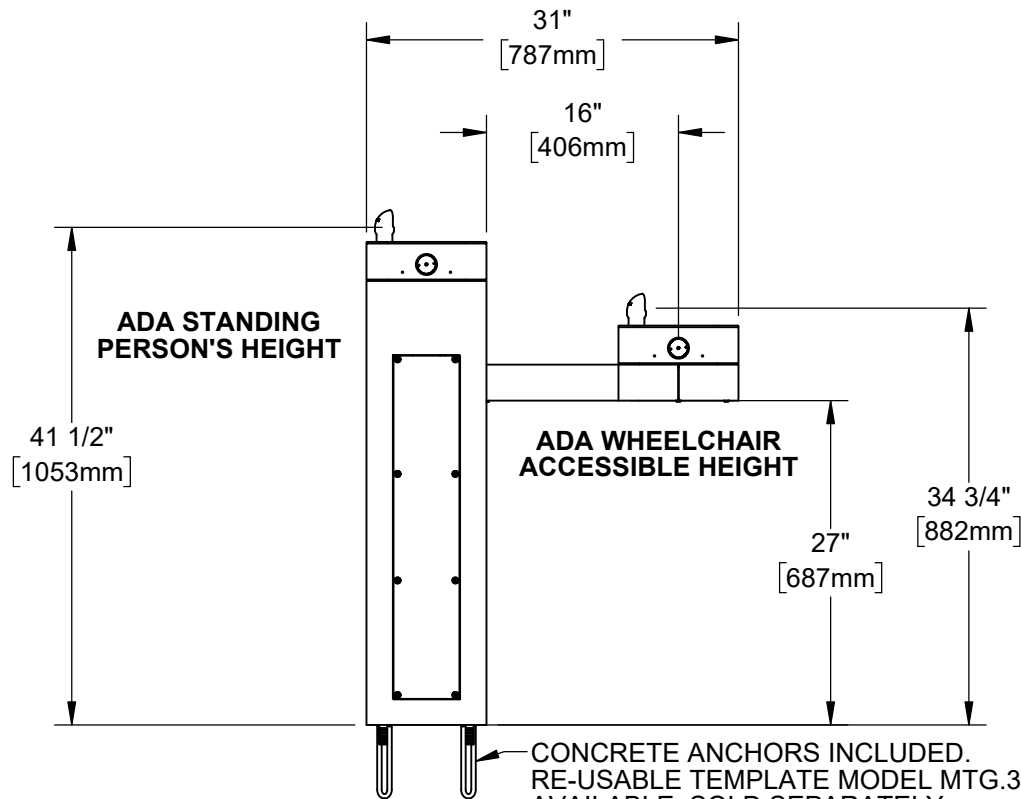
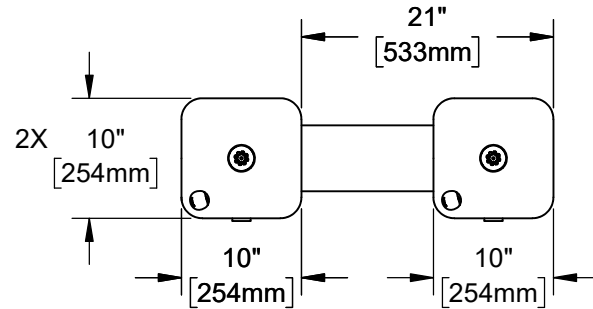
## PARTS BREAKDOWN

WHEN ORDERING PARTS, PLEASE  
SPECIFY PART NUMBER

			1455 KLEPPE LANE SPARKS, NEVADA 89431 (775) 359-4712 FAX (775) 359-7424 E-MAIL: HAWS@HAWSO.COM WEBSITE: WWW.HAWSO.COM		
ECN: 5652	REV. ECN: 5652	BY: DP	MODEL(S)  3602 / 3602FR	PART NUMBER 0580001169	
DRAWN: DHP	DATE: 6/11/20	CHKD: FV		REVISION 1	
APPROVED: FV	DATE: 03/18/21	SCALE: 1:16		DRAWING TYPE: PARTS BREAKDOWN	
		SIZE: A		SHEET 2 OF 2	

NOTES:

1. WHEN INSTALLING THIS UNIT, LOCAL, STATE, OR FEDERAL CODES SHOULD BE ADHERED TO. INSTALL A TRAP IN THE WASTE LINE AND A SCREWDRIVER STOP IN THE SUPPLY LINE IF REQUIRED.



**HAWS MODEL 3602 OR MODEL 3602FR IS FULLY COMPLIANT WITH THE FEDERAL 2010 AMERICANS WITH DISABILITIES ACT (ADA) ACCESSIBILITY REQUIREMENTS WHEN INSTALLED AS SHOWN HERE AND WHEN INSTALLED WITH PROPER CLEARANCES AND ACCESS. LOCATE THE PEDESTAL BASE WITH AT LEAST 8" OF CLEAR UNOBSTRUCTED HARDSCAPE BEHIND THE PEDESTAL. IT IS THE RESPONSIBILITY OF THE INSTALLER TO ADHERE TO LOCAL, STATE, AND FEDERAL CODES WHEN INSTALLING THIS UNIT. DISTANCE TO SURROUNDING OBJECTS, APPROACH SURFACES, ETC. SHOULD BE CONSIDERED.**

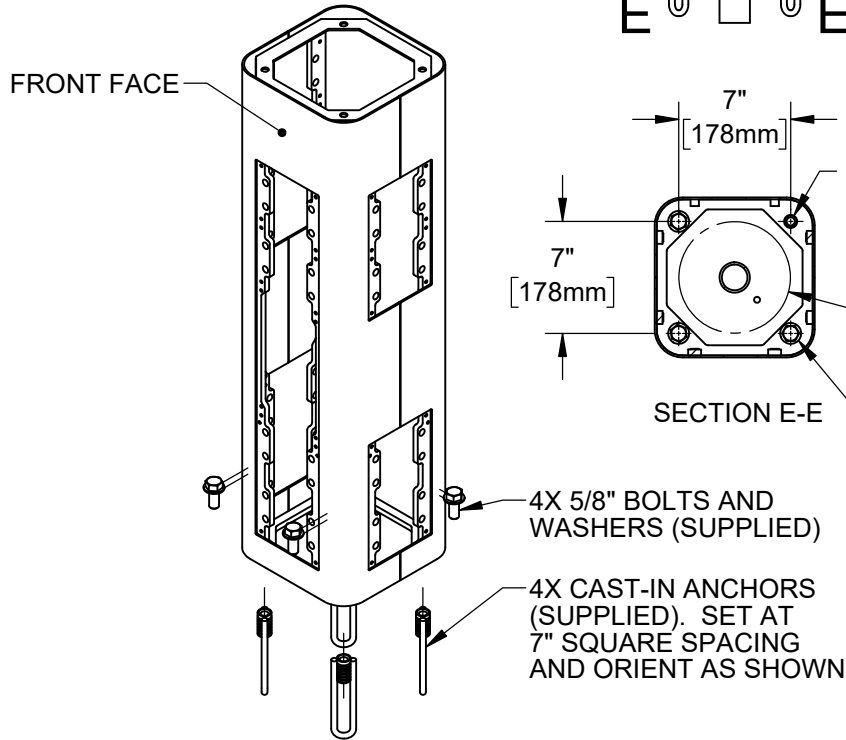
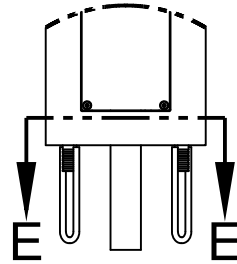
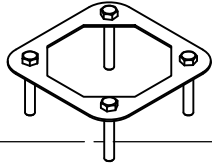


1455 KLEPPE LANE  
SPARKS, NEVADA 89431  
(775) 359-4712 FAX (775) 359-7424  
E-MAIL: HAWS@HAWSO.COM  
WEBSITE: WWW.HAWSO.COM

ECN: 5652	REV. ECN: 5652	BY: DP	MODEL(S) 3602 / 3602FR	PART NUMBER 0580001169.D
DRAWN: DHP	DATE: 6/11/20	CHKD: FV		REVISION 1
APPROVED: FV	DATE: 03/18/21	SCALE: 1:24	DRAWING TYPE: INSTALLATION	SHEET 1 OF 7

# INSTALLATION INSTRUCTIONS

**MODEL MTG.3600**  
(OPTIONAL)  
TEMPLATE FOR  
SPACING ANCHORS  
DURING CONCRETE  
POUR



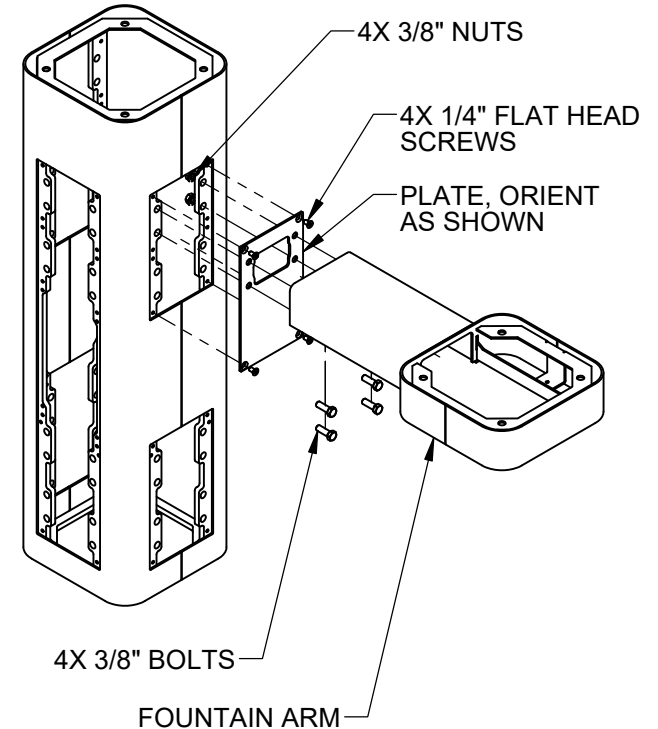
## STEP 1

MOUNT PEDESTAL TO CONCRETE SLAB IN DESIRED ORIENTATION. SLAB TO BE 30" MINIMUM SQUARE AND 6" MINIMUM THICK (BY OTHERS). PLUMBING CAST IN CONCRETE MUST FIT IN 7" DIAMETER AREA CENTERED UNDER PEDESTAL LOCATION. FOR 3602FR MODEL, SEE REQUIRED BURY VALVE (NOT SUPPLIED) INSTALLATION REQUIREMENTS ON SHEET 6.

7"  
[178mm]  
4X  $\phi 7/8"$   
[21mm]  
MOUNTING HOLES  
 $\phi 7"$   
[177mm]  
PLUMBING MUST FIT  
WITHIN THIS AREA  
SECTION E-E  
4X 5/8" BOLTS  
AND WASHERS  
SUPPLIED WITH  
ANCHORS

4X 5/8" BOLTS AND  
WASHERS (SUPPLIED)

4X CAST-IN ANCHORS  
(SUPPLIED). SET AT  
7" SQUARE SPACING  
AND ORIENT AS SHOWN



## STEP 2

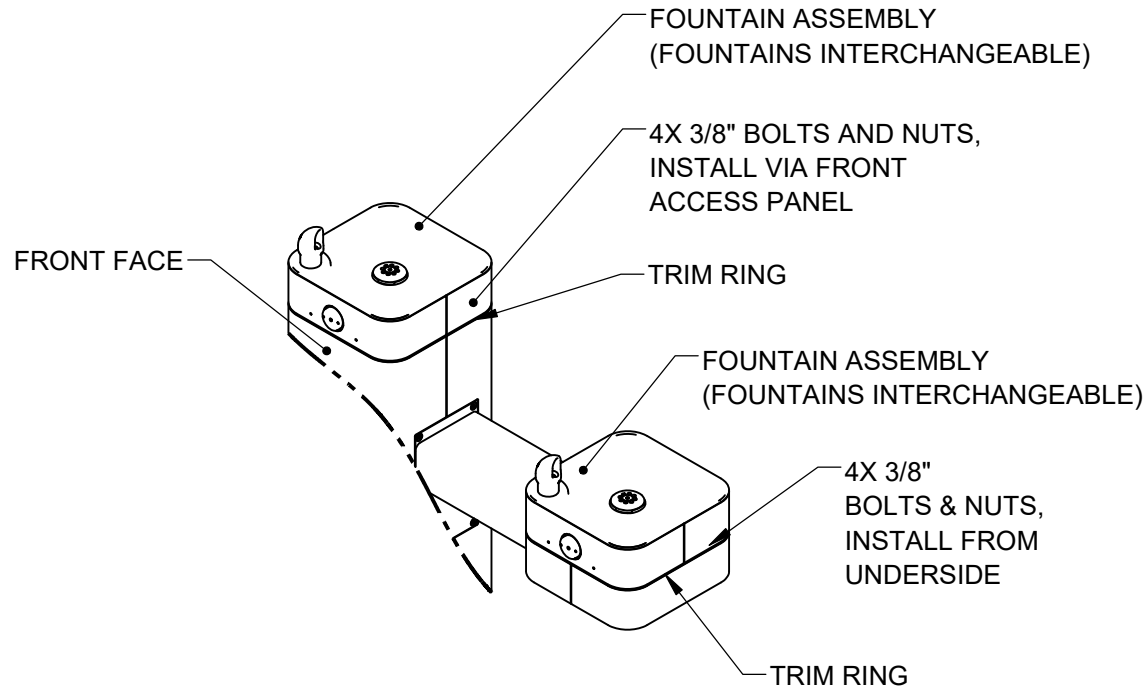
REMOVE BOTTOM COVER PLATES FROM ARMS BY REMOVING 3 1/4" BUTTON HEAD SCREWS. INSTALL ONE FOUNTAIN ARM ON RIGHT SIDE AS SHOWN. USE 1/4" FLAT HEAD SCREWS (SUPPLIED) TO INSTALL PLATE. USE 3/8" BOLTS AND NUTS (SUPPLIED) AND TORQUE TO 18 FT-LBS TO INSTALL ARM.



1455 KLEPPE LANE  
SPARKS, NEVADA 89431  
(775) 359-4712 FAX (775) 359-7424  
E-MAIL: HAWS@HAWSO.COM  
WEBSITE: WWW.HAWSO.COM

ECN: 5652	REV. ECN: 5652	BY: DP	MODEL(S)	3602 / 3602FR	PART NUMBER
DRAWN: DHP	DATE: 6/11/20	CHKD: FV			0580001169.D
APPROVED: FV	DATE: 03/18/21	SCALE: 1:24	DRAWING TYPE: INSTALLATION	SIZE: A	REVISION
					1
					SHEET 2 OF 7

## INSTALLATION INSTRUCTIONS



### STEP 3

PLACE SQUARE TRIM RING ON TOP OF PEDESTAL AND PLACE ONE FOUNTAIN ASSY. ON TOP OF TRIM RING, FACING THE FRONT. USE 3/8" BOLTS AND NUTS VIA THE FRONT ACCESS PANEL TO SECURE FOUNTAIN ASSY. TO PEDESTAL. PLACE TRIM RING AND INSTALL 2ND FOUNTAIN ASSY. ON ARM AS SHOWN. CAREFULLY CENTER TRIM RINGS AND TORQUE BOLTS AND NUTS TO 18 FT-LBS

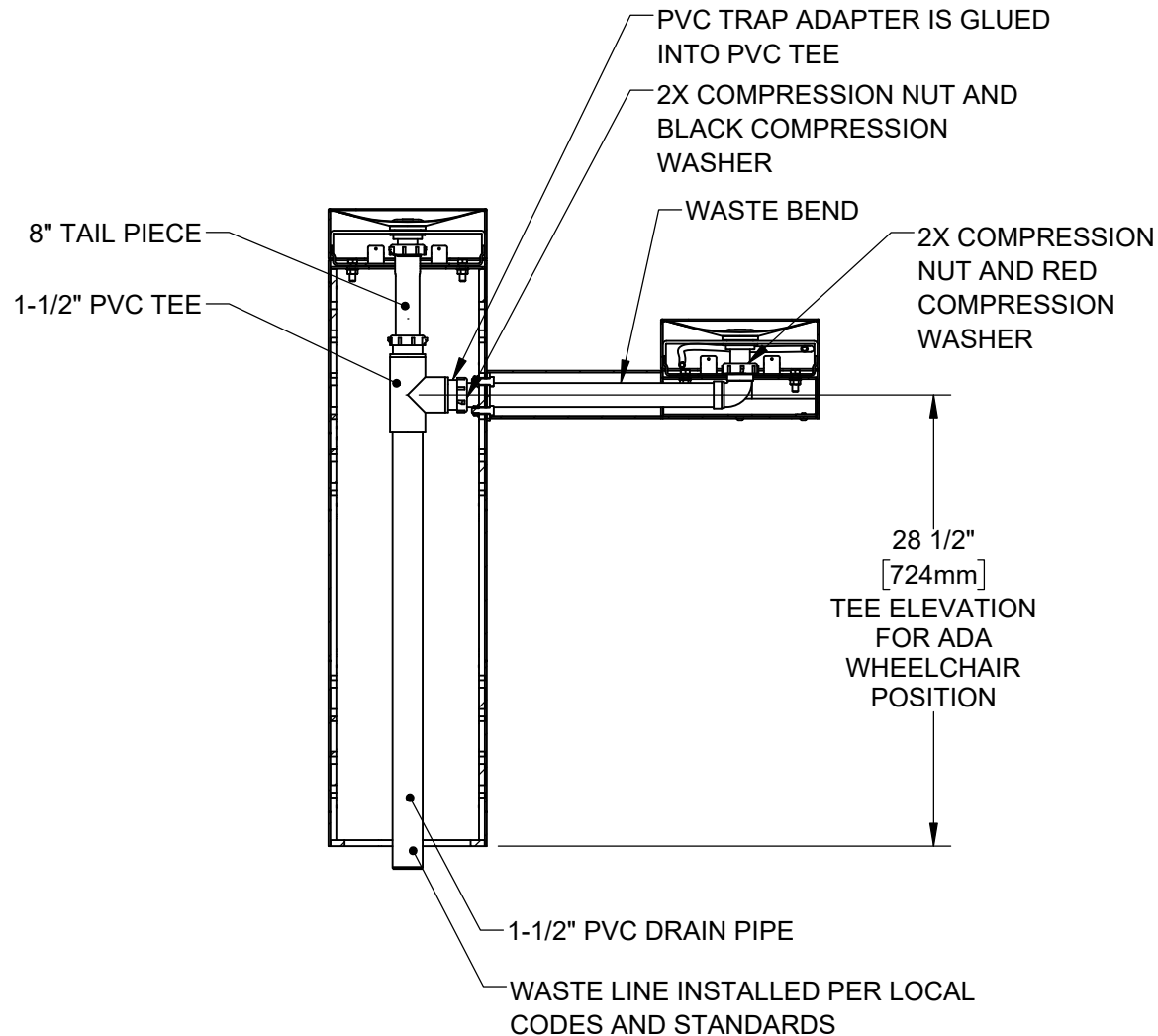


1455 KLEPPE LANE  
SPARKS, NEVADA 89431  
(775) 359-4712 FAX (775) 359-7424  
E-MAIL: HAWS@HAWSO.COM  
WEBSITE: WWW.HAWSO.COM

ECN: 5652	REV. ECN: 5652	BY: DP	MODEL(S) 3602 / 3602FR	PART NUMBER 0580001169.D
DRAWN: DHP	DATE: 8/11/20	CHKD: FV		REVISION 1
APPROVED: FV	DATE: 03/18/21	SCALE: 1:24	DRAWING TYPE: INSTALLATION	SIZE: A
				SHEET 3 OF 7



## INSTALLATION INSTRUCTIONS

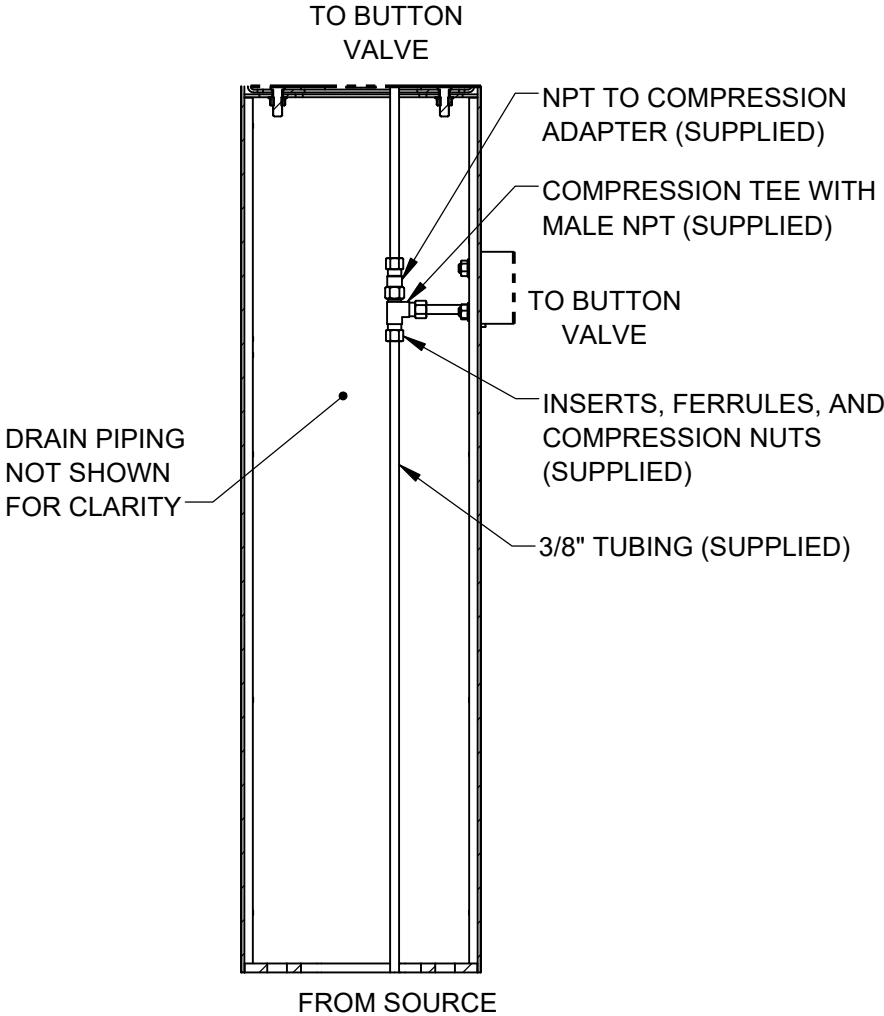


### STEP 4

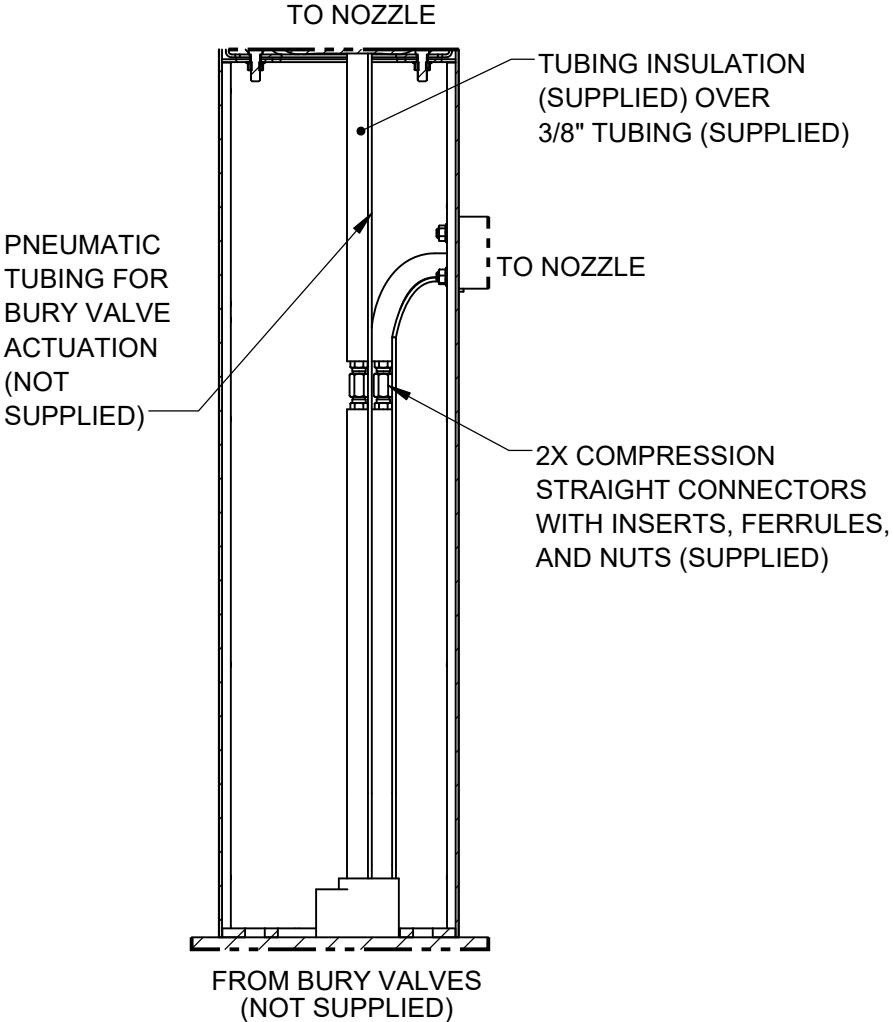
INSTALL SUPPLIED DRAIN COMPONENTS AS SHOWN. RED COMPRESSION WASHERS ADAPT FROM 1-1/4" TO 1-1/2" AT EACH DRAIN TAIL PIECE. BLACK COMPRESSION WASHERS ARE USED IN TRAP ADAPTERS AT TEE. USE APPROPRIATE PVC CEMENT TO MAKE SOLVENT CEMENT CONNECTIONS. TRIM WASTE BEND AND/OR TAIL PIECE LENGTH IF REQUIRED. NOTE THAT EXTRA PARTS MAY BE INCLUDED TO FACILITATE OTHER CONFIGURATIONS OF THIS FOUNTAIN.

				1455 KLEPPE LANE SPARKS, NEVADA 89431 (775) 359-4712 FAX (775) 359-7424 E-MAIL: HAWS@HAWS.CO.COM WEBSITE: WWW.HAWS.CO.COM			
ECN: 5652	REV. ECN: 5652	BY: DP	MODEL(S)		3602 / 3602FR		PART NUMBER
DRAWN: DHP	DATE: 8/11/20	CHKD: FV					0580001169.D
APPROVED: FV	DATE: 03/18/21	SCALE: 1:24	DRAWING TYPE:	INSTALLATION	SIZE: A	REVISION	
						1	
						SHEET 4 OF 7	

# INSTALLATION INSTRUCTIONS



**3602 SUPPLY PLUMBING**



**3602FR SUPPLY PLUMBING\***

\* SEE NEXT SHEET OF THIS DRAWING FOR MORE INFORMATION ON INSTALLING BURY VALVES WITH THIS MODEL.

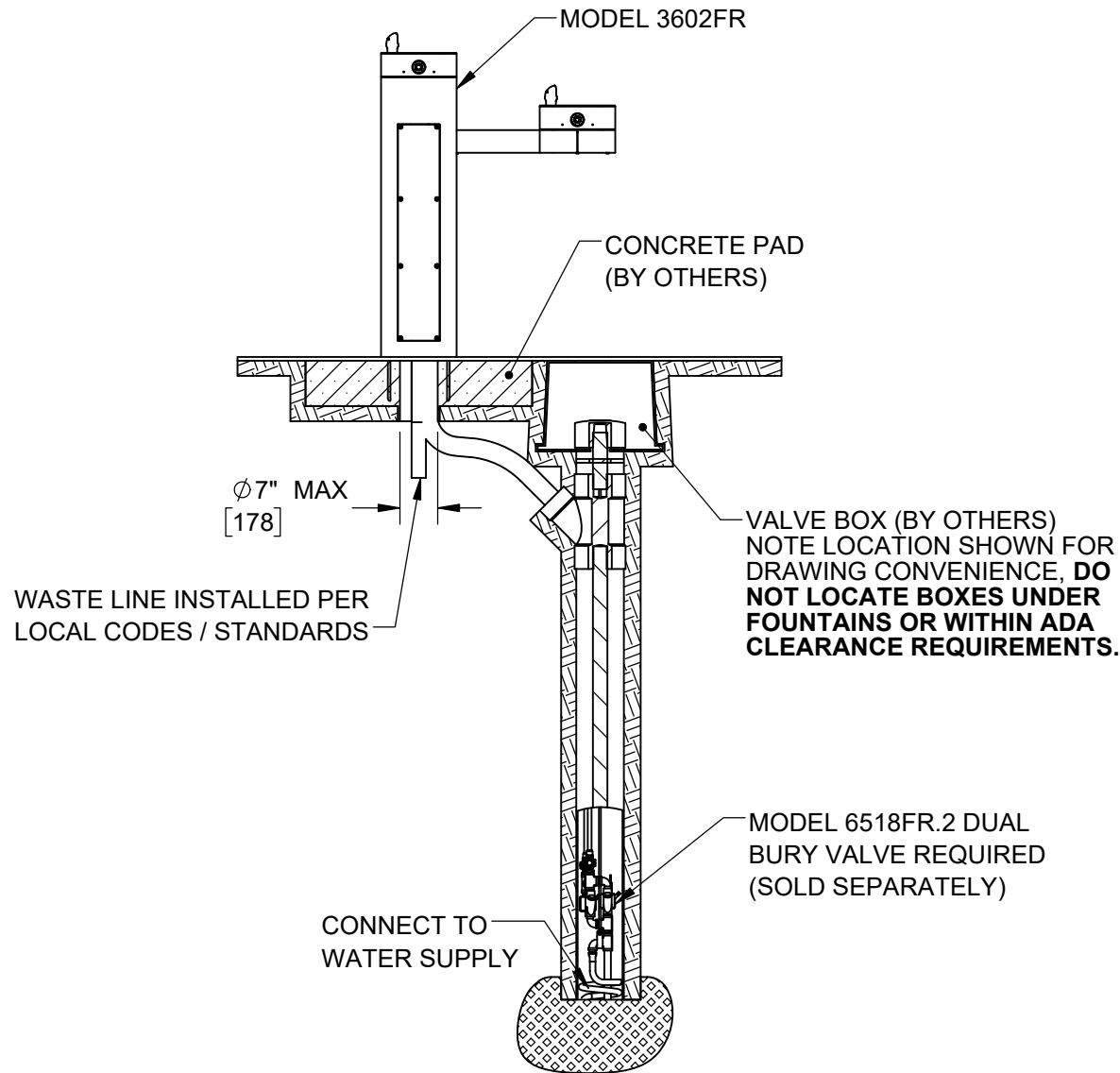
## STEP 5

COMPLETE WATER SUPPLY PLUMBING AS SHOWN. OPEN SUPPLY VALVE(S) AND TEST. REPLACE ARM BOTTOM PLATES AND PEDESTAL ACCESS PLATES. BURY VALVES (NOT SUPPLIED) ARE REQUIRED FOR 3602FR INSTALLATION. REFER TO BURY VALVE OPERATION AND MAINTENANCE MANUAL FOR ADDITIONAL INFORMATION.



1455 KLEPPE LANE  
SPARKS, NEVADA 89431  
(775) 359-4712 FAX (775) 359-7424  
E-MAIL: HAWS@HAWSO.COM  
WEBSITE: WWW.HAWSO.COM

ECN: 5652	REV. ECN: 5652	BY: DP	MODEL(S)	PART NUMBER
DRAWN: DHP	DATE: 6/11/20	CHKD: FV	3602 / 3602FR	0580001169.D
APPROVED: FV	DATE: 03/18/21	SCALE: 1:24	DRAWING TYPE: INSTALLATION	REVISION 1
			SIZE: A	SHEET 5 OF 7



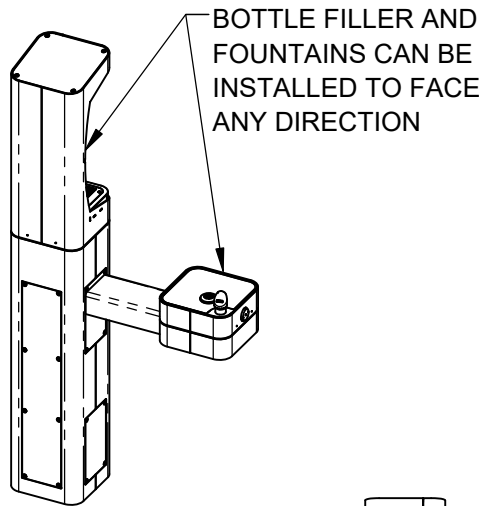
INSTALL BURY VALVES IN ACCORDANCE WITH MANUFACTURER'S INSTRUCTIONS. INSTALLATION MUST COMPLY WITH LOCAL CODES / STANDARDS, INCLUDING ADA CODES IF APPLICABLE.

**3602FR GENERAL BURY VALVE LAYOUT  
(FOR REFERENCE ONLY)**

				1455 KLEPPE LANE SPARKS, NEVADA 89431 (775) 359-4712 FAX (775) 359-7424 E-MAIL: HAWS@HAWSO.COM WEBSITE: WWW.HAWSO.COM			
ECN: 5652	REV. ECN: 5652	BY: DP	MODEL(S)  3602 / 3602FR		PART NUMBER 0580001169.D		
DRAWN: DHP	DATE: 8/11/20	CHKD: FV			REVISION 1		
APPROVED: FV	DATE: 03/18/21	SCALE: 1:24	DRAWING TYPE: INSTALLATION	SIZE: A	SHEET 6 OF 7		

## NOTES ON OPTIONAL CONFIGURATIONS

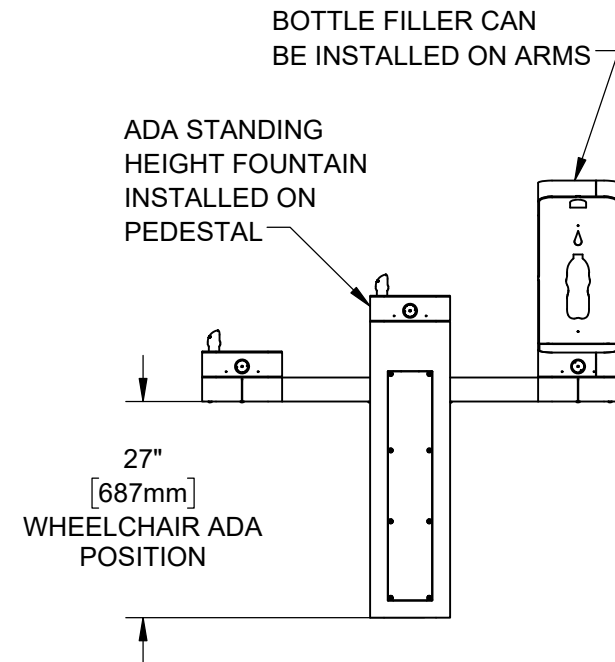
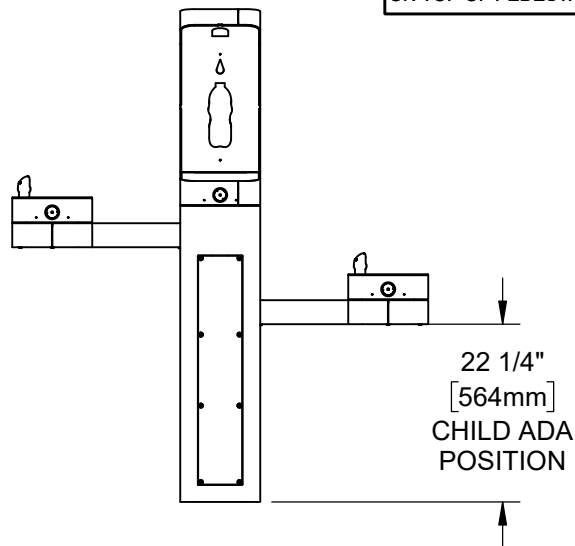
HAWS 3600 SERIES OUTDOOR FOUNTAINS ARE MODULAR AND CAN BE ASSEMBLED AND CONFIGURED MANY DIFFERENT WAYS. DISPLAYED HERE ARE A FEW EXAMPLES. CONFIGURATIONS OTHER THAN THAT SHOWN IN THE INSTALLATION INSTRUCTIONS FOR THE 3602 / 3602FR MAY AFFECT COMPLIANCE WITH ADA REGULATIONS. IT IS THE RESPONSIBILITY OF THE INSTALLER TO UNDERSTAND LOCAL, STATE, AND FEDERAL REGULATIONS AS APPLICABLE IF INSTALLING THIS FOUNTAIN IN CONFIGURATIONS OTHER THAN THAT INDICATED ON SHEET 1 (PAGE 6 OF 12).



ADA ARM HEIGHT POSITION OPTIONS				
	LEFT SIDE*	RIGHT SIDE*	ARM HEIGHT (LOWER EDGE)	BUBBLER NOZZLE HEIGHT
STANDING ADA	YES (STD)	NO	31-7/8 [809 mm]	39-3/8 [999 mm]**
WHEELCHAIR ADA	YES	YES (STD)	27 [687 mm]	34-5/8 [878 mm]
CHILD ADA	YES	YES	22-1/4 [566 mm]	29-7/8 [757 mm]

\* RIGHT AND LEFT CAN BE REVERSED IF PEDESTAL IS ROTATED 180°.

\*\*NOZZLE HEIGHT IS 41-1/2" WHEN FOUNTAIN IS INSTALLED ON TOP OF PEDESTAL.



		1455 KLEPPE LANE SPARKS, NEVADA 89431 (775) 359-4712 FAX (775) 359-7424 E-MAIL: HAWS@HAWS.CO.COM WEBSITE: WWW.HAWS.CO.COM	
		ECN: 5652 REV. ECN: 5652 BY: DP DATE: 8/11/20 CHKD: FV	MODEL(S) 3602 / 3602FR
APPROVED: FV DATE: 03/18/21	SCALE: 1:24 DRAWING TYPE: INSTALLATION	SIZE: A SHEET 7 OF 7	