

# Fig. 186 (Formerly Afcon Fig. 510)

## Two Hole Pipe Strap

**Size Range:** 3/4" through 3"

**Finish:** Pre-Galvanized Carbon Steel per ASTM A653

**Service:** Hanger for CPVC, steel, & copper pipe in the horizontal position on the bottom and side of structural wood beams, composite beams and Steel 20 Ga. (min.) (Fig. A, C respectively). Can be used as a restrainer when installed on top of structural wood beams (Fig. B), for limiting pipe movement due to thrust loads during sprinkler system start-up. It can also be used as a guide to limit movement for pipe in the vertical position. When used on composite wood beams, web thickness must be 3/8" or greater.

**Approvals:** cULus Listed

**Installation:**

- Snap hanger over pipe.
- Secure hanger to mounting surface with screws provided.
- Do not make adjustments to hanger mounting flanges that result in clamping the pipe to the mounting surface. Pipe must be allowed to move freely through hanger.
- Steel applications require two (2) #14 x 1" hex washer head self-drilling TEK screws. Not Supplied. Part Number STD-0090.

**Features:**

- Beveled edge design helps protect the CPVC pipe from any rough surface.
- Easily attaches to wood structure with #10 x 1" hex washer head self threading screw supplied with product. No pre-drilling required.
- Retaining dimples hold the strap onto the pipe for ease of installation. (Not shown)

**Ordering:** Specify pipe size, figure number, and description.

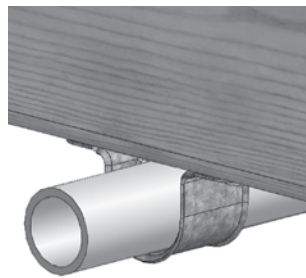


Fig. A

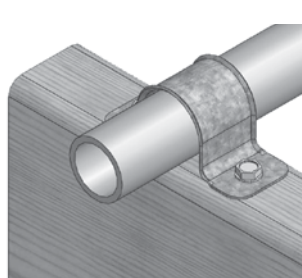


Fig. B

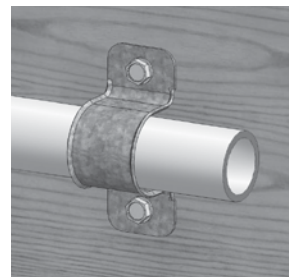


Fig. C

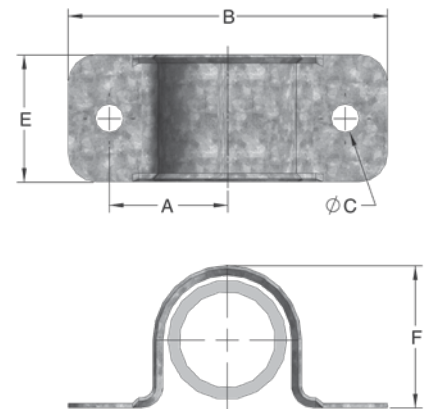


FIG. 186: DIMENSIONS (IN) • WEIGHT (LBS)						
Pipe Size	A	B	øC	E	F	Approx. Weight/100 (lbs)
3/4	1	2 <sup>13</sup> / <sub>16</sub>	1/4	1 1/8	1 1/8	5
1	1 1/4	3 1/4			1 1/2	6
1 1/4	1 5/16	3 3/8			1 11/16	7
1 1/2	1 9/16	3 7/8			2 1/8	8
2	1 13/16	4 5/16			2 9/16	9
2 1/2	2 1/4	5 3/8			1 3/16	2 7/8
3	2 5/8	6 5/16		3 1/2		17

PROJECT INFORMATION		APPROVAL STAMP	
Project:		<input type="checkbox"/> Approved	
Address:		<input type="checkbox"/> Approved as noted	
Contractor:		<input type="checkbox"/> Not approved	
Engineer:		Remarks:	
Submittal Date:			
Notes 1:			
Notes 2:			