

STAINLESS STEEL BATHTUB

SKU: 915102, 915103

BEFORE YOU BEGIN

We recommend consulting a professional if you are unfamiliar with installing plumbing fixtures. Signature Hardware accepts no liability for any damage to the floor, plumbing or for personal injury during installation.

Observe all local plumbing and building codes.

Unpack and inspect the product for shipping damage. If any damage is found, contact our Customer Relations team at 1-866-855-2284.

GETTING STARTED

- Ensure that you have gathered all the required materials that are needed for the installation.
- Ensure that your bathroom floor is adequately supported, and the finished floor is level.
- Keep the plumbing connections around the tub easily accessible for any future maintenance that may be necessary.

PLANNING

Use the tub's PDF specification sheet as a reference when planning your layout. The specification sheet can be found and downloaded from the product page on our website.

Because the tub specification measurements are approximate and slight variations may occur, we highly recommend performing any rough-in procedures with the tub on site. For on-site rough-in information, go to the appropriate drain installation section.

TOOLS AND MATERIALS:



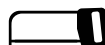
Plumbers
Tape



Tape Measure



Pencil



Hacksaw



Silicone Sealant
(100% Neutral
Cure)



Damp Cloth



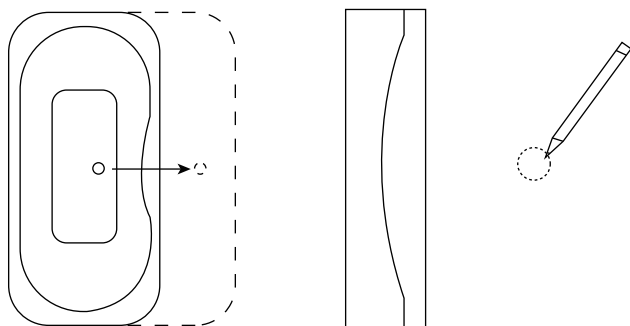
Level

For Warranty information, please visit: signaturehardware.com/services/warranty

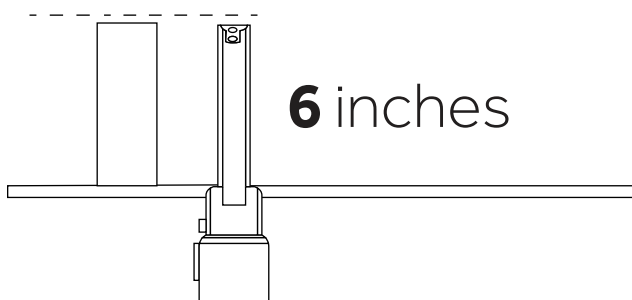
REVISED 02/12/2020
CODES: 295465, 295464

INSTALLATION

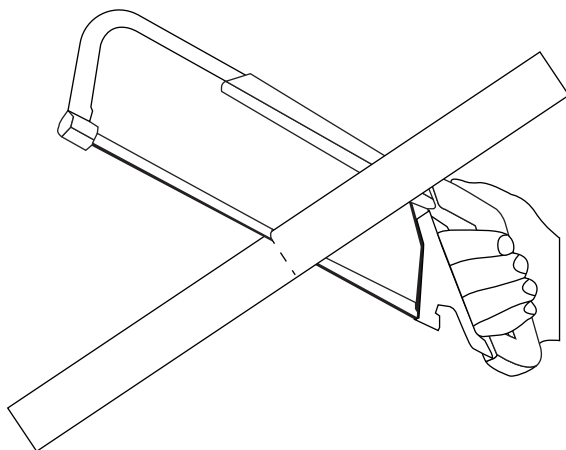
1. Set the tub in the desired installation location and mark the drain hole location on the floor.



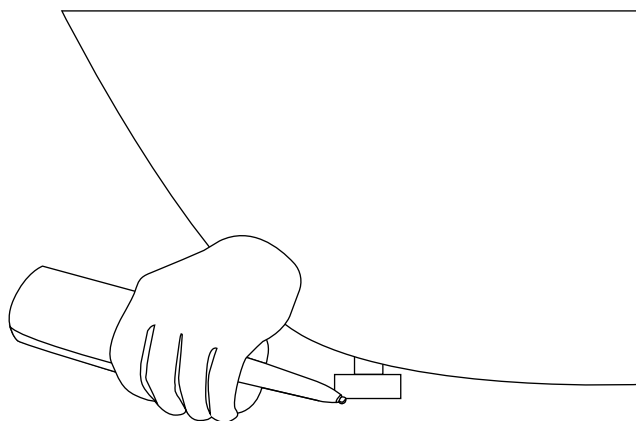
2. Move the tub away from the installation location so that plumbing can be installed. The drain pipe should extend approximately 6" above the finished floor.



3. When the floor is finished, measure and cut the drain pipe to the appropriate length for the type of drain that is being used.



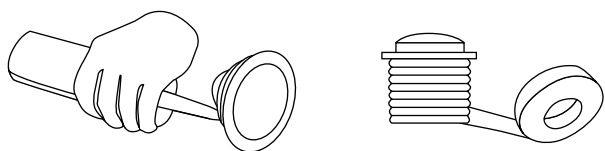
4. Carefully set the tub in position. If the tub has leveling feet, adjust as necessary until level and apply a generous bead of silicone under each foot. If your tub does not have leveling feet, shims can be used for leveling if your floor is not flat.



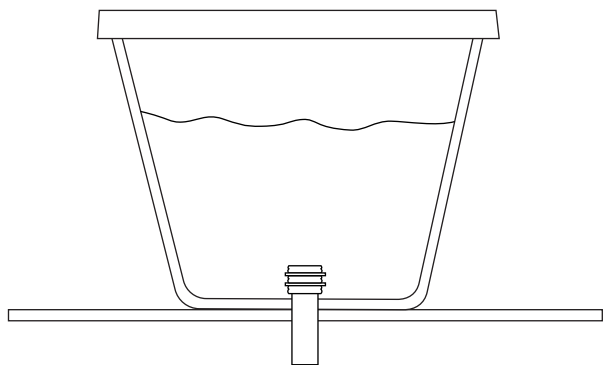
STAINLESS STEEL BATHTUB

SKU: 915102, 915103

5. Apply 100% neutral cure silicone sealant to the underside of the drain flange and thread it through the tub and into the drain pipe. Apply thread sealant or plumber's tape to the threaded connection to ensure a water-tight seal. Tighten by hand. Wipe away any excess sealant using a damp cloth.



6. Fill the tub with water to check for any leaks from the connections. Verify that the drain is working properly.



CLEANING AND MAINTENANCE

It is recommended that you use a cleaner or polish that is designed specifically for stainless steel products. You may use a gentle soap, such as dish washing liquid and warm water. Acidic cleaners, such as lemon juice, should be avoided. We recommend the use of a soft sponge or microfiber washcloth. Do not use any abrasive cleaning pads or materials. Rinse with warm water and dry with a clean, soft cloth.

Minor scratches can be removed using a scratch remover designed specifically for stainless steel or metals. Refer to the directions for the product being used, as each scratch remover will have its own step-by-step procedure. For deeper scratches, wet sanding may be necessary using 600-grit (coarse) or 1000-grit (fine) sandpaper attached to a rubber sanding block. After sanding, use a stainless steel polish to restore shine if desired.