

OPTIONAL ELECTRIC HEAT KIT FOR MULTI-POSITION AIR HANDLER
USE WITH: PVFY-P12, 18, 24, 30, 36, 48, 54NAMU - MVZ-A12, 18, 24, 30, 36 - PVA-A30, 36, 42AA4

Job Name:	
System Reference:	Date:

GENERAL FEATURES

- 208/240V Electric Heat Kits
- Mounts directly to the outlet connection of the Multi-position Air Handler

CAUTION

- Do not power the electric heat kit from the outdoor unit.
- A separate power supply must be provided.
- Air handler must be set on non-combustible floor when using electric heat in the downflow configuration
- Maximum external static pressure of 0.60 in WG for all installations with Electric Heaters. For more details, see note on best design practice on page 2.

ACCESSORIES

- SPTB1.....Separate Power Kit for PVA and MVZ models
This kit allows the installer to connect power from another source to the air handler.
(S2 & S3 still must connect from outdoor unit for communication)
- ETC-211000-MIT.....Auxiliary Heat Lockout for PVA and MVZ models
This option prevents the electric heat kit from operating above a set outside temperature.
- 1309007-044.....Replacement Temp Probe for ETC-211000-MIT

MODEL PER OUTDOOR UNIT

(See note on best design practice on page 2.)

AVAILABLE COMBINATIONS

(Note: No other combination approved.)

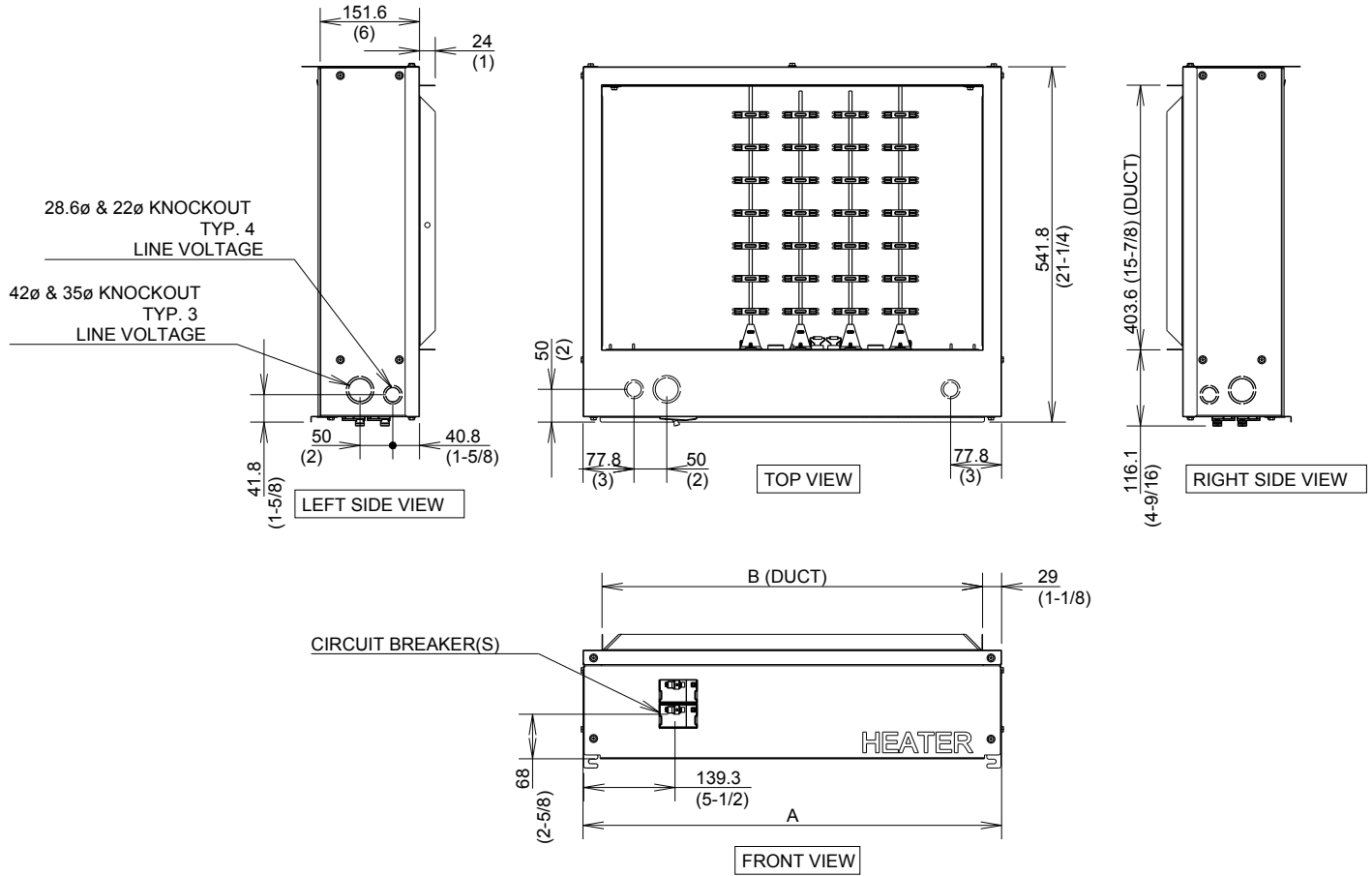
KW / STAGES (1ST, 2ND)		ELECTRIC HEAT KIT							
		EH03-MPA-S	EH05-MPA-S	EH08-MPA-S	EH08-MPA-M	EH10-MPA-M	EH10-MPA-L	EH15-MPAS-L	EH17-MPAS-L
		3	5	4+4	4+4	5+5	5+5	7.5+7.5	8.75+8.75
Air Handler Model	PVFY-P12NAMU	o	o						
	PVFY-P18NAMU	o	o	o					
	PVFY-P24NAMU	o	o	o					
	PVFY-P30NAMU				o	o			
	PVFY-P36NAMU				o	o			
	PVFY-P48NAMU						o	o	o
	PVFY-P54NAMU						o	o	o
	MVZ-A12AA4	o	o						
	MVZ-A18AA4	o	o	o					
	MVZ-A24AA4	o	o	o					
	MVZ-A30AA4				o	o			
	MVZ-A36AA4				o	o			
	PVA-A30AA4				o	o			
PVA-A36AA4						o	o		
PVA-A42AA4						o	o	o	

ELECTRICAL SPECIFICATIONS

ELECTRIC HEAT PART NUMBER		HEATER AMPS ¹	MCA ¹	MOP ¹	HTR & MTR AMPS ²	MCA ²	MOP ²	FACTORY INSTALLED CIRCUIT BREAKER
		208V/240V	208V/240V	208V/240V	208V/240V	208V/240V	208V/240V	
EH03-MPA-S		10.8/12.5	13.5/15.6	15/20	13.2/14.9	16.5/18.6	20/20	20
EH05-MPA-S		18.1/20.8	22.6/26	25/30	20.5/23.2	25.6/29	30/30	30
EH08-MPA-S		28.9/33.3	36.1/41.7	40/45	31.3/35.7	39.1/44.7	40/45	45
EH08-MPA-M		28.9/33.3	36.1/41.7	40/45	32.2/36.6	40.2/45.8	45/50	50
EH10-MPA-M		36.1/41.7	45.1/52.1	50/60	39.4/45	49.3/56.2	50/60	60
EH10-MPA-L		36.1/41.7	45.1/52.1	50/60	40.6/46.2	50.8/57.7	60/60	60
EH15-MPAS-L	Circuit 1	27.1/31.2	33.9/39.1	35/40	31.6/35.8	39.5/44.7	40/45	45
	Circuit 2	27.1/31.2	33.9/39.1	35/40	27.1/31.2	33.9/39.1	35/40	40
EH17-MPAS-L	Circuit 1	31.6/36.5	39.5/45.6	40/50	36.1/41	45.1/51.2	45/60	60
	Circuit 2	31.6/36.5	39.5/45.6	40/50	31.6/36.5	39.5/45.6	40/50	50

1. Heater amps; no motor.
2. Heater and motor amps (connect air handler power supply to largest circuit breaker).

DIMENSIONS: ELECTRIC HEAT KIT



MODEL	A	B
EH03-MPA-S	433	376
EH05-MPA-S	(17)	(14-13/16)
EH08-MPA-S		
EH08-MPA-M	534	477
EH10-MPA-M	(21)	(18-13/16)
EH10-MPA-L		
EH15-MPAS-L	635	579
EH17-MPAS-L	(25)	(22-13/16)

Note: Best design practice to assure adequate airflow requirements.

During electric heater operation the fan is defaulted to high speed to help assure adequate airflow. To maintain adequate airflow required for electric heater operation, it is recommended that an additional 0.20 WG static pressure drop be added to system ductwork design when using the electric heat kit.

Examples:

When air handler is set for 0.50 WG static, the maximum external static pressure for ductwork should not exceed 0.30 WG.

When air handler is set for 0.80 WG static, the maximum external static pressure for ductwork should not exceed 0.60 WG, etc.

Manufactured for MITSUBISHI ELECTRIC US, INC.

1340 Satellite Boulevard, Suwanee, GA 30024

Toll Free: 800-433-4822 www.mehvac.com

