



# Sensi™ Touch Wi-Fi Thermostat INSTALLATION GUIDE

# Installation guide

Downloading the Sensi app	3
Creating a Sensi account	3
Installing the Sensi thermostat	4
Connecting the Sensi thermostat	8
Notes	10

## DOWNLOADING THE APP AND CREATING AN ACCOUNT

### You Will Need

Gather this information before you begin installation for a smoother walk through.

- Sensi Password (found on the back of the Welcome Guide)
- Wi-Fi Network Name/SSID
  - \*Make sure this is a 2.4GHz network.
- Wi-Fi Network Password
- Screwdriver
- Hardware in Sensi Touch Wi-Fi thermostat packaging

### Download the Sensi app

The Sensi Touch Wi-Fi Thermostat is a Wi-Fi enabled device. To install and configure your thermostat correctly, you must use the Sensi app. To start the installation process, download the Sensi app to your smart phone or tablet. It is a free download. The Sensi app requires the following Operating System (OS) software to download:

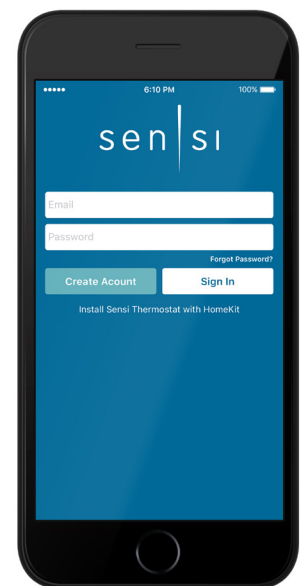
- Android (Google Play) version 4.2 or later
- iOS (Apple) version 10.0 or later
  - \*Note that in the iOS store, the Sensi App will ONLY appear on an “iPhone only” search. On an iPad, change the search criteria in the App Store.



### Create an account

When you download the Sensi app, you will be prompted to create an account. This is required to access your thermostat remotely and use all of the features Sensi offers. Use a valid email address and a password of your choosing to create an account. Remember this email address and password. Your Sensi thermostat will be linked to this email address once it is registered.

\*Note that the “Install a device” option is only for installing to HomeKit only. You will lose available features without creating an account.



## INSTALLING THE SENSI THERMOSTAT

# Installation

Once you have downloaded the Sensi app, and have created an account, you are ready to install the thermostat to your wall and connect it to Wi-Fi. If no thermostats are registered yet, the Sensi app will prompt you to add a thermostat.

First, choose which thermostat you purchased. The Sensi Touch Wi-Fi Thermostat option is for the following model numbers:

- 1F95U-42WF
- ST75

*Note: You can check your model number on the back of the thermostat faceplate.*

# Install Path

After creating an account, signing in and choosing your model, the app will ask you whether or not the thermostat is already on the wall. You will either choose “No, it needs to be installed,” or “Yes, it is on the wall.”

The first option will walk through the entire installation process. If you did not have this thermostat professionally installed, choose this option.

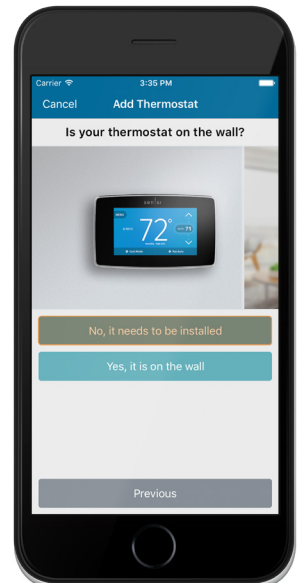
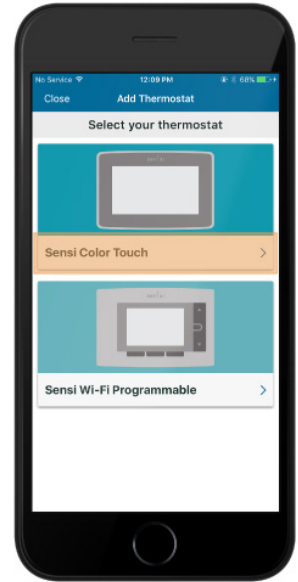
The second option is for connecting your thermostat to Wi-Fi only. If you have had a professional install your thermostat, and you just need to connect the Sensi thermostat to your home Wi-Fi network, choose this option.

# No, it needs to be installed.

This option will walk you through the entire installation process, including identifying and connecting your wiring, as well as connecting to Wi-Fi. The Sensi app will walk through a step-by-step process for installation.

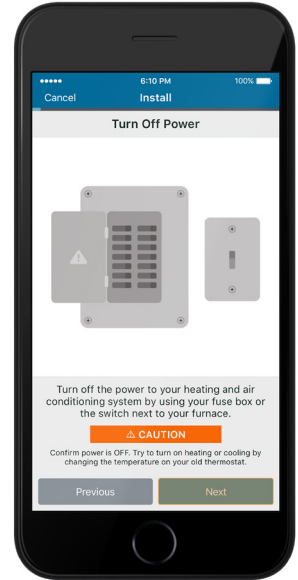
# Gather Tools and Package Contents

Gather all the necessary tools for installation.



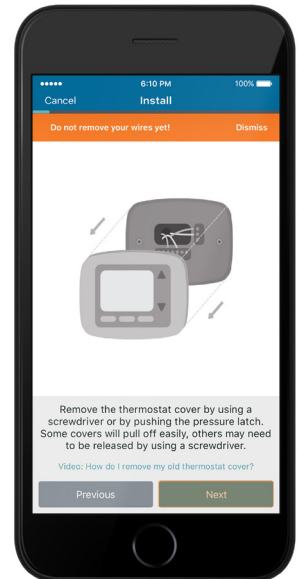
## Turn Off Power

Turn off the power to your heating and air conditioning system before handling your thermostat wires.



## Remove Old Thermostat Cover

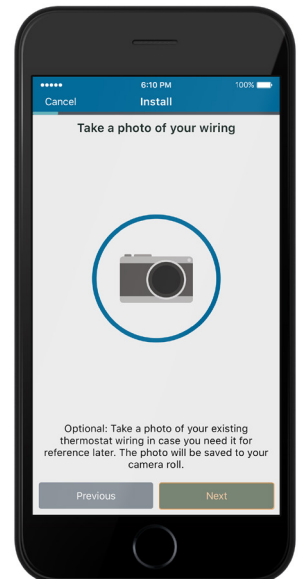
Remove the cover using a screwdriver or by pushing the pressure latch. Some covers pull off while others need to be released using a screwdriver.



## Photograph Your Wiring

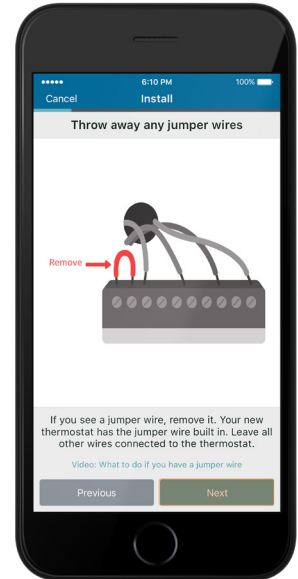
**THIS IS IMPORTANT.** The Sensi app will prompt you to take a picture of your existing thermostat and old wiring in case you need it later.

This can be helpful for troubleshooting with our technical support team if necessary. The picture you take will be saved to your camera roll or photo gallery.



## Throw Away Any Jumper Wires

Sensi has a jumper wire built into it, and you will not need any jumper wires from your old unit.



## Choose Wire Terminals

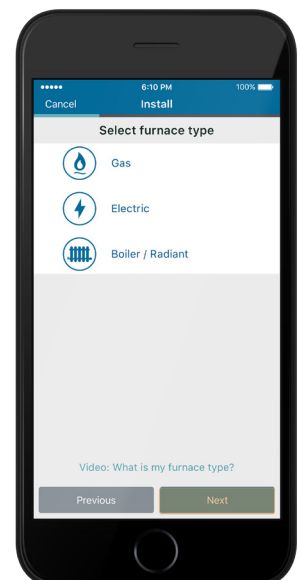
Choose the terminal labels that have wires attached to them on your old thermostat here. The app will tell you if you have a valid configuration.

If you are getting an invalid configuration message you can learn more about compatibility at [sensicomfort.com/compatibility](http://sensicomfort.com/compatibility).



## System Type

Select what type of system you have.



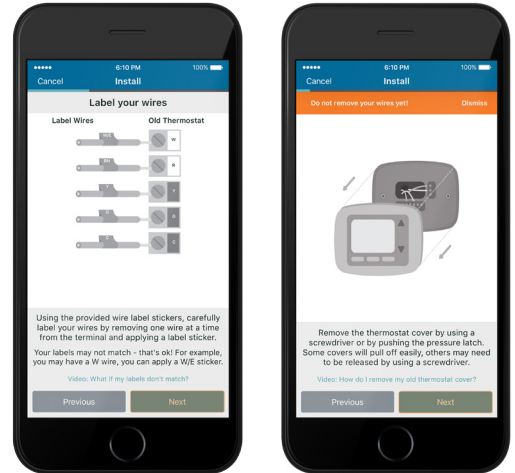
## INSTALLING THE SENSI THERMOSTAT

### Label Your Wires

Using the provided wire label stickers, label your wires by removing one wire at a time.

### Disconnect Wires and Remove Base

After all of your wires are labelled, remove the old thermostat base from the wall.

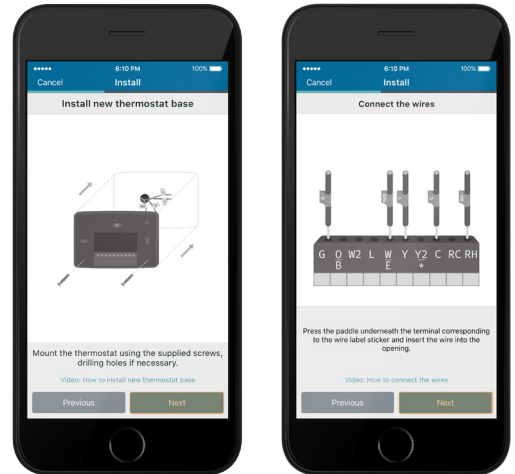


### Install Sensi Base

Use the provided mounting screws and secure the Sensi base to the wall.

### Connect the Wires

Once the Sensi Touch base is mounted and secured on the wall, insert the wires into the terminals. Simply push the wires into the terminal slots.

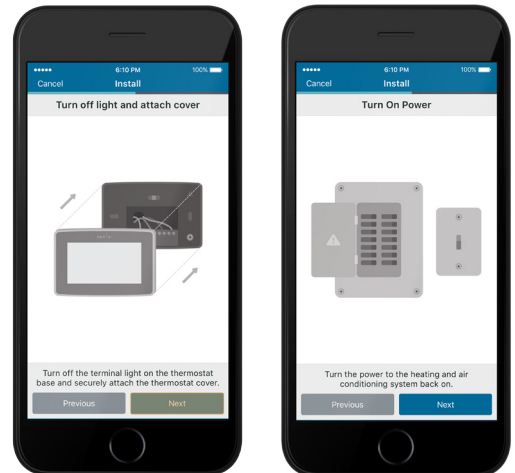


### Attach Cover

Push the front display onto the thermostat base. If you used the "Backlight" feature, please make sure the switch is turned "Off" so you can control it from the display.

### Turn On Power

Turn the power to your system back on.



## CONNECTING THE SENSI THERMOSTAT

# Connecting to Wi-Fi

This portion of the installation guide covers how to connect your thermostat to Wi-Fi. If you chose the first option, “No, it needs to be installed,” the app will provide instructions for installing and wiring your thermostat before you connect to Wi-Fi. If you chose, “Yes, it is on the wall,” the app will jump right into connecting your thermostat to Wi-Fi.

If you have an iOS device, you will be able to use Sensi Touch with Apple HomeKit. Because of this, connecting to Wi-Fi will be different depending on what type of smart device you’re using.

### 1. BROADCAST SENSI NETWORK

On the thermostat, press Menu, then Wi-Fi. In the Wi-Fi menu, press “Set up a new network.”

### 2. CONNECT YOUR iOS DEVICE (10.0 OR LATER)

Connecting Sensi thermostat to HomeKit allows you to control it using Siri, and has home automation control. Press “Next” to continue.

*Note: Move to 3 for instructions on connecting to Wi-Fi using an Android device.*

#### A. SELECT OR CREATE A HOME

Pick a name from the suggested list or add a new name for the location of the thermostat

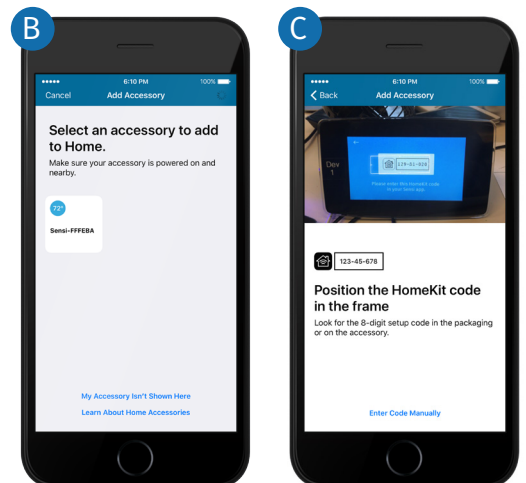
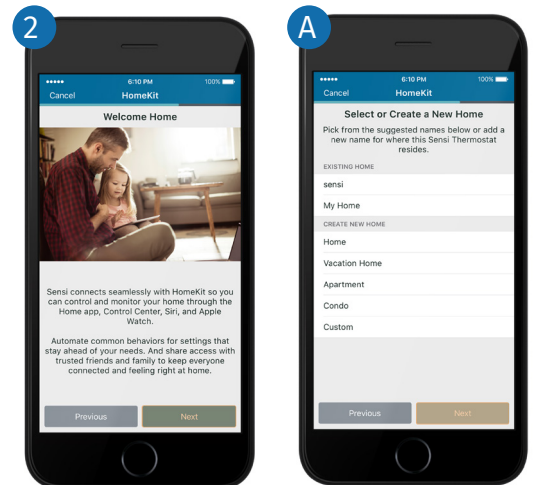
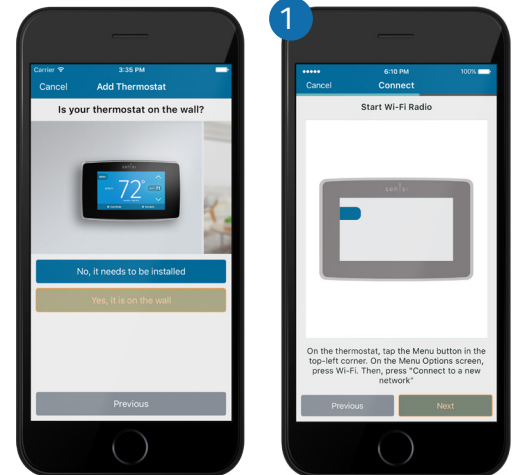
#### B. ADD ACCESSORY

Select the Sensi from the accessory list.

#### C. SENSI HOMEKIT CODE FOR ACCESSORY

Scan the Sensi HomeKit code displayed on the Sensi Touch screen with your phone’s camera. The code may take up to 30 seconds to display.

*Note: This code is dynamic and will be different every time you reconnect to Wi-Fi. It is also not the same code found on the back of the Welcome Guide. Please scan the code on the Sensi Touch’s display screen every time.*





## CONNECTING THE SENSI THERMOSTAT

### D. FINALIZE ACCESSORY

Finalize the accessory information.  
Press “Done” to continue.

## 4. CONNECTING USING AN ANDROID DEVICE

Tap on the blue “Connect my Sensi to Wi-Fi” button in the app. This takes you to your phone’s Wi-Fi network list. You will see a “Sensi” network in the list of available networks. Tap the “Sensi” network, and connect to it.

After you’ve successfully connected to the network, tap your phone’s back button to return to the Sensi app. Press the “Next” button at the bottom of the app to continue.

### A. SENSI PASSWORD

Make sure you have the Sensi password found on the back of your Welcome Guide or the back of the thermostat face plate.

Input the Sensi password as the 8-digit PIN.

### B. SELECT YOUR WI-FI NETWORK

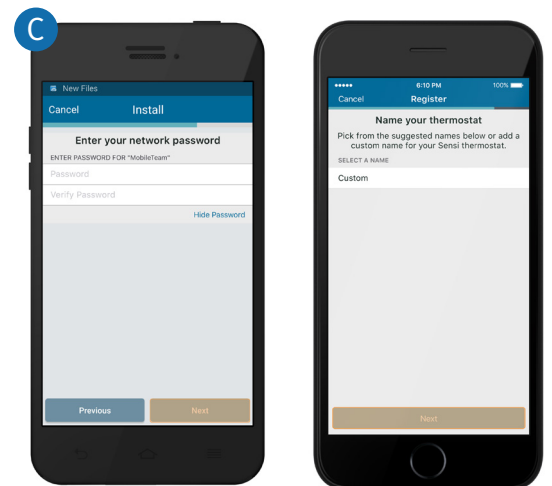
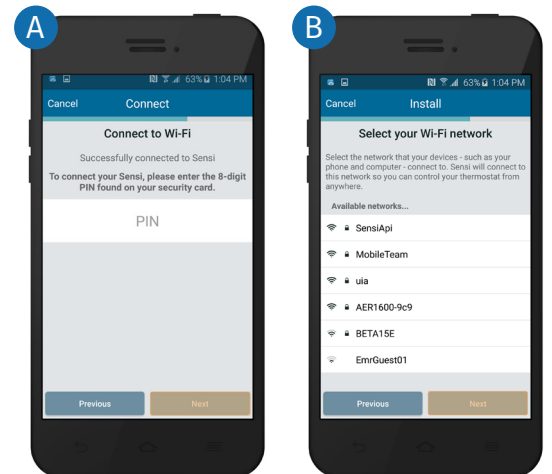
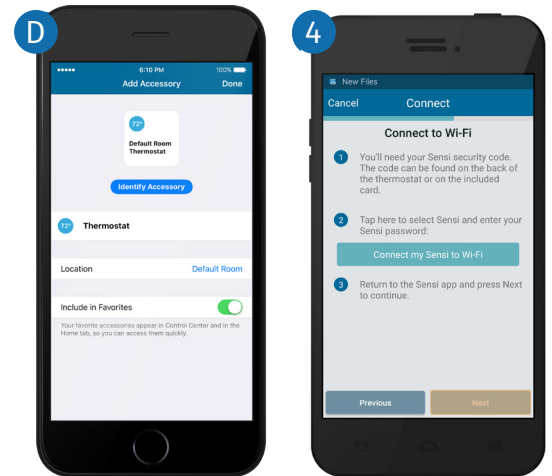
Select your home Wi-Fi network from a list of available networks. Note that this network must be 2.4GHz or Sensi will not be able to connect to it. If you have your network hidden, make it visible for installation purposes. Press “Next” to continue.

### C. ENTER YOUR NETWORK PASSWORD

Type in the password for your home Wi-Fi network.  
Press “Next” when you’ve input the password to continue.

## Name Thermostat

You can select a name or choose a custom name for your thermostat. Press “Next” to continue.



## CONNECTING THE SENSI THERMOSTAT

# Register thermostat

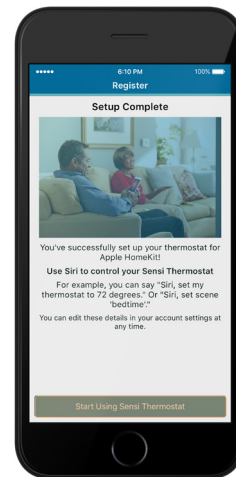
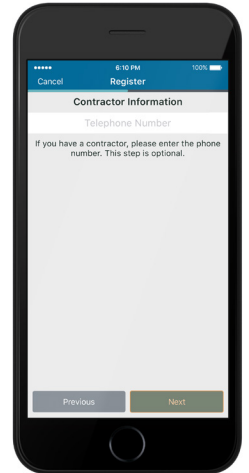
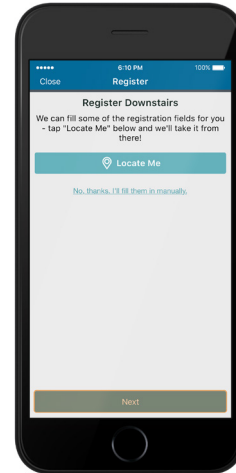
After successfully connecting Sensi, the app will prompt you to register the thermostat. You can either choose the “Locate Me” option or fill in your street address, city, state, zip code, country and time zone manually. Press “Next” to continue.

# Contractor Information

If a contractor professionally installed your thermostat, and registered as a Sensi partner, they have the option to input their phone number here. If there is not a registered number available, simply hit “Next” to continue.

# Start Using Sensi

Congratulations on successfully installing Sensi. Press “Start Using Sensi Thermostat” to open the main screen of the app.



## NOTES

# Accessing your Sensi thermostat from other devices

When you log into your Sensi account with your email address and password, the app or web page will be able to control all the thermostats registered to your Sensi account.

If you give someone else your email address and password to your Sensi account, they will be able to log in and control any thermostats registered to that account. You can change your email address and password from inside the app or when you are logged into your thermostat via the Sensi website. Be aware of this when giving out your information. There is no limit to the number of devices that can access the thermostat.

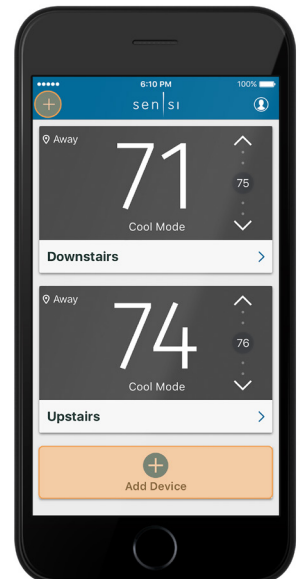
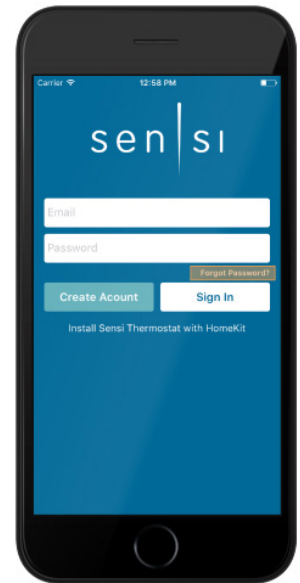
## Forgot Password

If you forgot the password to your Sensi account, click on “Forgot Password” on the login screen of the Sensi app or select “Account” then “My Thermostat” option on the [www.sensicomfort.com](http://www.sensicomfort.com) website. A temporary password will be sent to the email address that you use to login.

## Installing Multiple Thermostats

If you are installing more than one thermostat, follow the same installation process in the Sensi app. Once you have one thermostat installed, open the Sensi app on your phone. At the main screen, press the plus (+) sign to add another thermostat to your account. The (+) sign will be on the left side of the screen and at the bottom on an iOS device, and the right side of the screen on an Android device.

*Note: To reconnect an already registered thermostat to a new router, use the plus sign and choose the second option, “Yes, it is on the wall,” and run through the connection steps again.*



## NOTES

# Reconnecting to Wi-Fi

If you replaced your router or changed your Wi-Fi network password, you will need to reconnect your thermostat to Wi-Fi. This is different depending on what smart device you are using.

## IOS

If you're using an iOS device with iOS 10 or later, follow these steps to reconnect to Wi-Fi:

- Make sure your iOS device is connected to the 2.4GHz Wi-Fi network that you want to reconnect to.
- Press Menu, then Wi-Fi, and then "Set up a new network" on the thermostat.
- Open your Wi-Fi settings on your iOS device.
- Scroll down to "Set up a new device..." and press Sensi-XXXXXX.
- In Accessory Setup, press "Next."
- After it has joined, press "Done."
- You should be able to open the Sensi app and view your thermostat again.

Note: This process is only for reconnecting to an already registered thermostat.

## ANDROID

If you're using an Android device, use the plus (+) sign in the main view of the Sensi app and choose the second option, "Yes, it is on the wall." Follow the in app instructions to reconnect the thermostat to Wi-Fi.

## NOTES

# Accessing Account Information

You can use the Account area to access your email preferences, change your account information and email address associated with your Sensi.

*For iOS: Tap the person icon in the upper right hand corner. (see picture)*

*For Android: Tap the three dots in the upper right hand corner.*

# HVAC Configuration Menu

If you chose the option “No, it needs to be installed” and walked through the installation process on the Sensi app the app should have correctly configured your thermostat for your system type. You can check your system configurations by accessing the “Menu” on the physical thermostat, and then pressing “Set Up HVAC Equipment.”

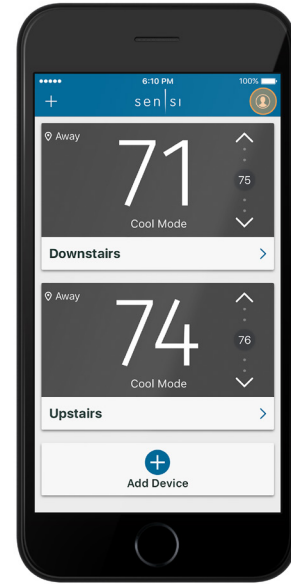
# Technical Support

For problems connecting your Sensi thermostat, call or email the Sensi Technical Support team, and they will be happy to help you or your contractor walk through any steps needed to troubleshoot the Sensi thermostat.

[www.sensicomfort.com/support](http://www.sensicomfort.com/support)

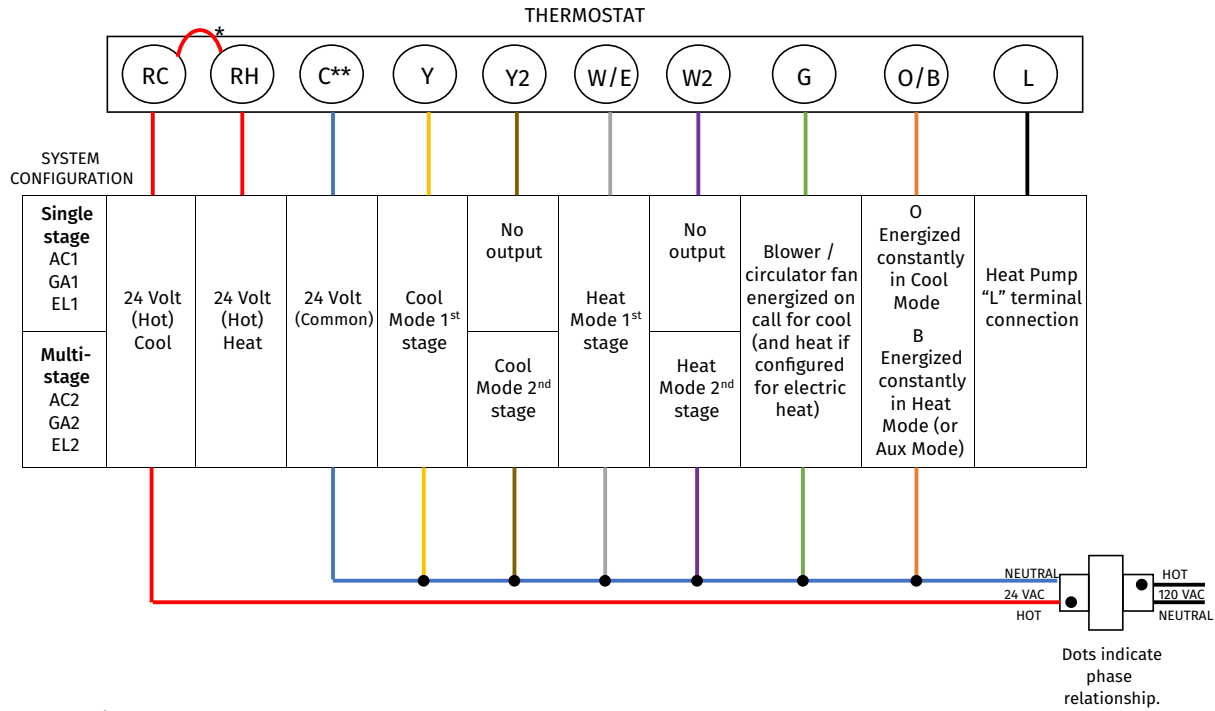
(888) 605.7131

[support@sensicomfort.com](mailto:support@sensicomfort.com)



Menu item	Options
<b>Outdoor Equipment Configuration</b>  <i>*If you have a heat pump, you'll most likely have a wire in O/B.</i> <i>**If you have two stages, you'll have a wire in Y2.</i>	AC1 Conventional Cooling 1 (Single Stage)
	AC2 Conventional Cooling 2 (Two-Stage)
	HP1 Heat Pump 1 (Single Stage)
	HP2 Heat Pump 2 (Two-Stage)
	ACO No Cooling
	<b>Indoor Equipment Configuration For Gas or Electric Heat</b>  <i>*If you have two stages, you'll have a wire in W2.</i>
GA 2 Gas, oil, propane furnaces or boilers (Two Stage)	
EL1 Electric furnaces (Single Stage)	
EL2 Electric furnaces (Two-Stage)	
FAN No Heating	
<b>Reversing Valve Position</b>  <i>*If you've installed your Sensi Touch to a heat pump, and your system is producing warm air in "Cool" and cool air in "Heat," you may need to change your Reversing valve position to either O or B.</i>  <i>**There must be a wire in the O/B terminal for this configuration to affect your HVAC system. If there is no wire in the O/B terminal, simply leave the default setting as "O."</i>	O Heat pump – O/B is always energized in Cool.
	B Heat pump – O/B is always energized in Heat.
	6 Zone valve setting.

## Single Stage or Multi-Stage Conventional System with Single Transformer

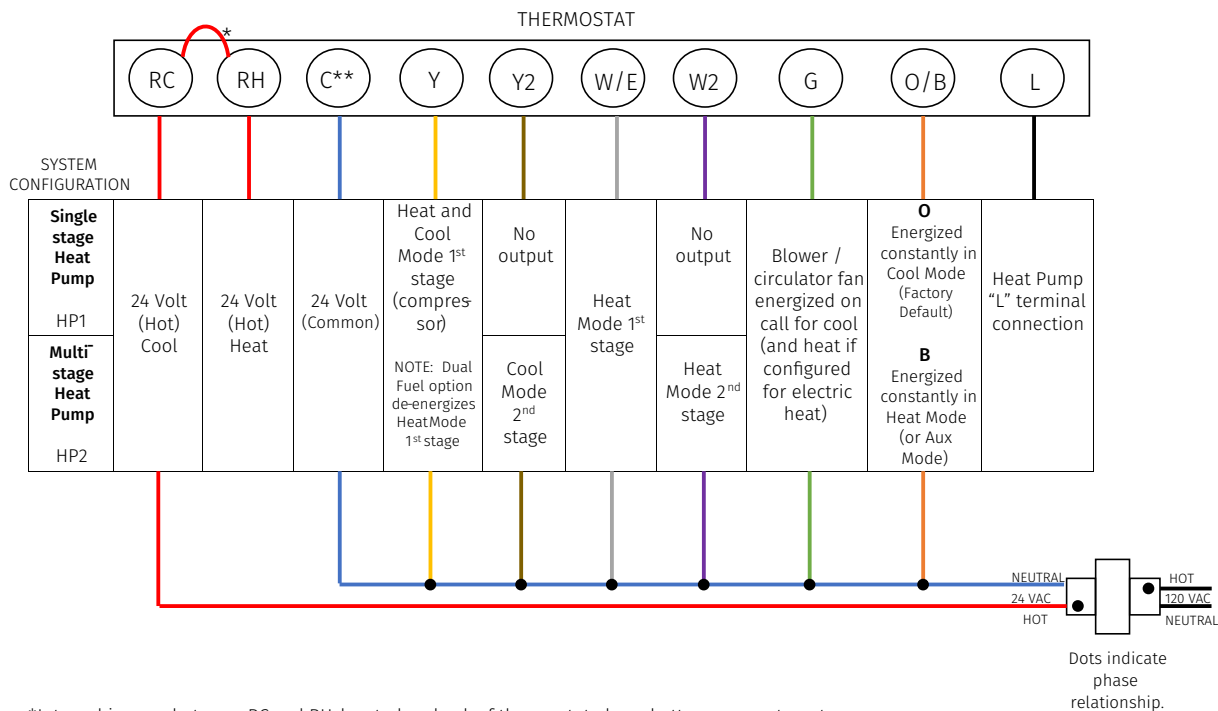


\*Internal jumper between RC and RH, located on back of thermostat above battery compartment.

\*\*Common connection required for Heat only or Cool only systems.

\*\*\*Thermostat wiring does not follow a standardized color code. Label thermostat wires before removing old thermostat from the wall.

## Heat Pump Systems

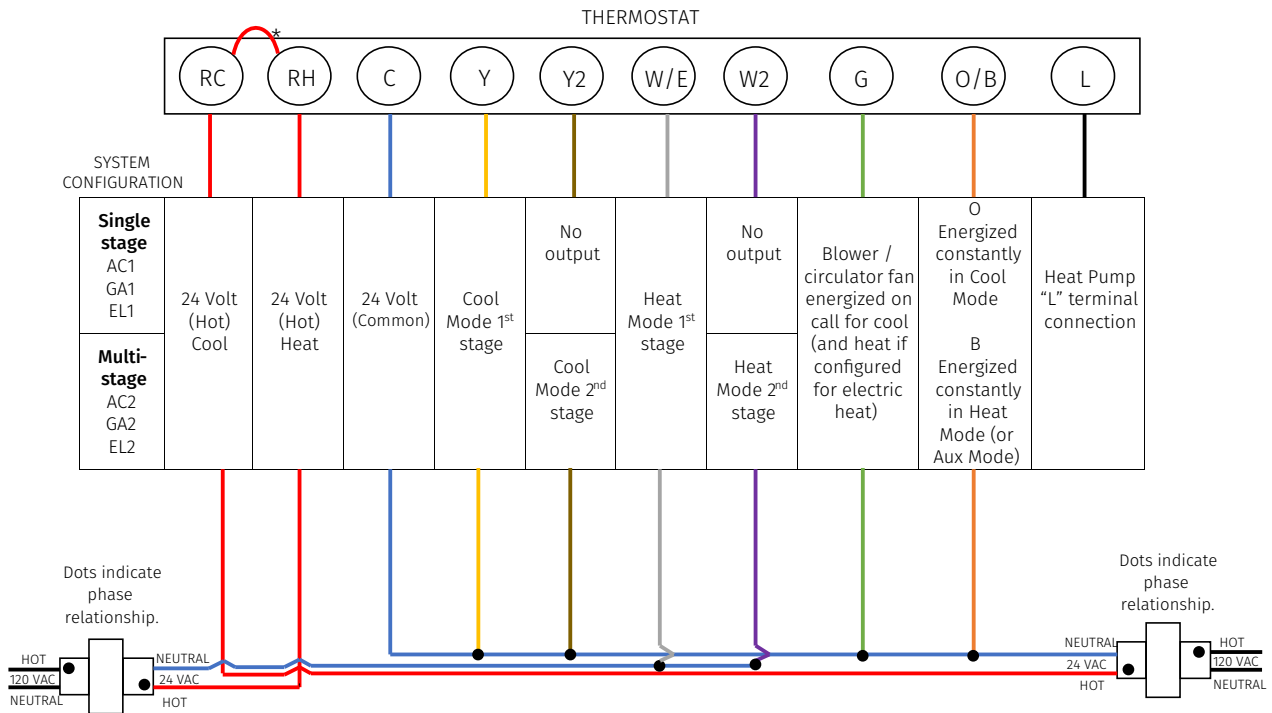


\*Internal jumper between RC and RH, located on back of thermostat above battery compartment.

\*\*Common connection required on Heat only, Cool only or Heat Pump systems.

\*\*\*Thermostat wiring does not follow a standardized color code. Label thermostat wires before removing old thermostat from the wall.

## Single Stage or Multi-Stage System (No heat pump) with Two Transformers



\*Two transformer systems (separate RC and RH wires), clip interna, RC/RH jumper located on back of thermostat above battery compartment.

\*\*Thermostat wiring does not follow a standardized color code. Label thermostat wires before removing old thermostat from the wall.