

# PCA® Perlator®

## Faucet Aerator - 1.2 gpm max

### Pressure Compensating Regular Size



flow, stop and go®

#### Features and Benefits

- ▶ Watercolours® design: Color coding to identify flow rate and stream pattern.
- ▶ Patented construction provides a splash-free stream, well-aerated and soft to the touch.
- ▶ Pressure compensating for constant flow from 20 to 80 psi.
- ▶ Integrated anti-liming honeycomb replaces conventional wire mesh screens prone to lime build up.
- ▶ Anti-clogging dome screen filters sediment and particles.
- ▶ Compatible with regular and vandal proof M22 & M24 metric housings.
- ▶ Available housing finishes: chrome, polished brass, brushed nickel, and oil rubbed bronze.
- ▶ Laser marked housings with statutory marks.

#### Certifications

ANSI/NSF®-61-372  
 ASME A112.18.1M and CSA B125  
 Meets **CALGreen** requirements  
 WaterSense



Complies with CEC Amendment to CCR Title 20, section 1605.3

#### Thread & Part Number

Part #	Designation	Thread Size
14 535	Insert only	
14 500	Regular male	15/16" -27
14 510	Regular female	55/64" -27
14 520	Regular dual thread	15/16" -27 x 55/64" -27
14 504	Vandal proof regular male	15/16" -27
14 514	Vandal proof regular female	55/64" -27
14 526	Vandal proof regular dual thread	15/16" -27 x 55/64" -27

Other product combinations available.

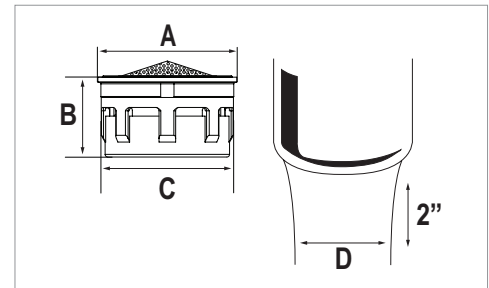
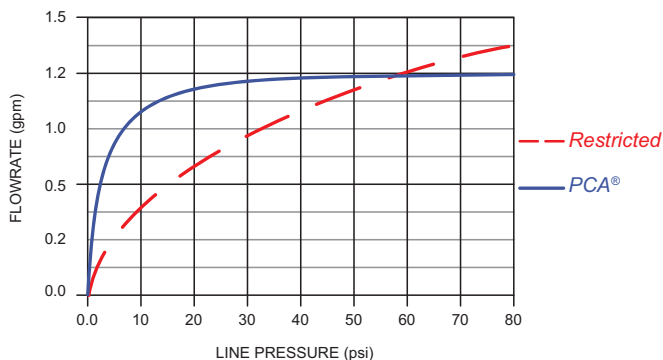
#### Packaging:

Inserts 1 pc (bag), 6 pcs (tube), 50 pcs (bag)  
 Reg. male/female/dual thread 1 pc (bag), 6 pcs (tube), 50 pcs (tray)  
 Reg. vandal proof male/female/dual thread 1 pc (bag), 6 pcs (tube), 40 pcs (tray)

#### Color Code

Dome	Flow Regulator	Basket
Natural	Pink	Dark Gray

#### Flow Rate Curve



#### Dimensions

No	mm	In
A	20.88	.822
B	12.00	.472
C	19.97	.786
D	≈ 13	≈ 1/2

#### Housings

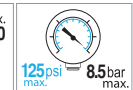
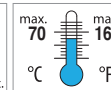
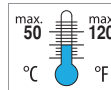


#### Technical Data

Materials: Body Acetal  
 O-ring EPDM  
 Washer EPDM

Continuous

Short-term (5 minutes max.)  
 Per ASME A112.18.1 testing requirements.



LFFA-8

NEOPERL, Inc., Waterbury, CT • Tel: 203-756-8437 • Fax: 203-574-2107 • www.neoperl.com

April 2018 - Information subject to change without notice.