

**Sentry**  
**SUPPLY LLC**  
by **PRIME-LINE**®

# Toilet Partition Hardware





Originally established in 1975, we have been supplying Hardware for installing and maintaining toilet partitions, in public restrooms, for over 40 years.

Our ever expanding inventory makes it possible to offer repair parts for all makes of toilet partitions. We pride ourselves in responding quickly to all of our customers' needs, whether it be timely shipment of orders, quotation requests or sourcing and obtaining parts.

We are committed to Customer Satisfaction. Please give us the opportunity to prove it to you!

### **What makes us different:**

- Largest selection of current and hard-to-find hardware plus adjacent categories
- Competitive wholesale pricing
- Proprietary market data that provides guidance for regional assortments
- In stock, ready to ship inventory
- Personalized account management and technical support

### **How we can help:**

- Global sourcing and manufacturing
- Private labeling
- Single-item drop ship and large warehouse order fulfillment
- Nationwide shipping from a centralized location
- Full EDI integrations developed in-house
- In-house eCommerce, content creation and Creative Services

### **Have questions?**

Our Customer Experience team is made up of industry veterans, they are true experts and are here to help. If you have questions, need a quote or want to place an order, send an email to [customerservice@primeline.net](mailto:customerservice@primeline.net) or call 1-800-255-3505 Monday thru Friday 6am to 5pm PST.

### **For further information, please contact us directly:**

1980 Orange Tree Lane, Suite 100  
Redlands, CA 92374  
800.255.3505  
[primelineparts.com](http://primelineparts.com)

# SENTRY SUPPLY

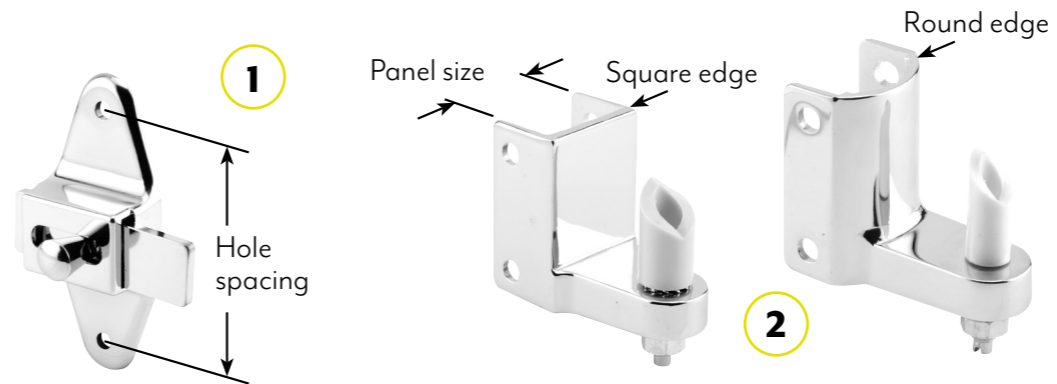
Toilet Partition Hardware



Originally established in 1975, we have been supplying hardware for installing and maintaining toilet partitions, in public restrooms, for over 40 years.

### In order to identify your system:

1. Review the hole spacing (distance from the center of the first hole to the center of the second hole).
2. Select the correct panel size as well as the panel type (either square edge or round edge).
3. Review the handing guide below.



656-6530  
Strike & Keeper

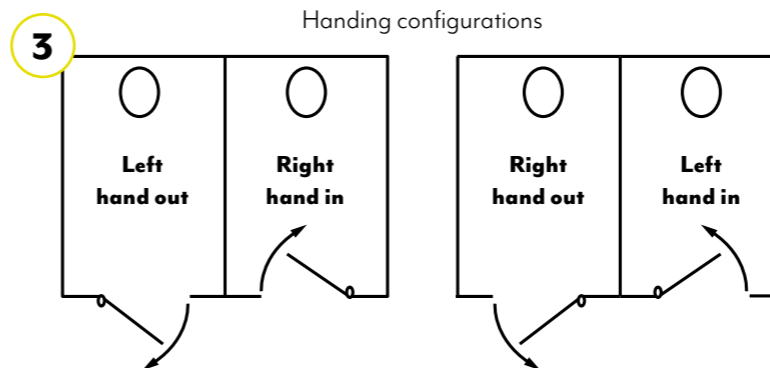


658-6614  
Concealed Latch



656-2472  
Door Insert

### Guide for ordering surface mounted hinges:



656-6377  
Wall Bracket



658-8241  
Hinge

## Section Table of Contents

[How To Use The Catalog](#)

[Cams](#)

[Coat Hooks](#)

[Concealed Latches](#)

[Door Stops](#)

[Fasteners & Tools](#)

[Headrail Accessories](#)

[Hinge Pins](#)

[Hinges](#)

[Pivot Hinges](#)

[Privacy cover](#)

[Pulls](#)

[Qwik Fix Kits](#)

[Strikes & Keepers](#)

[Supports](#)

[Surface Latches](#)

[Wall Brackets](#)

[Wall Stops](#)

Clickable links for Prime-Line social media.

## SENTRY SUPPLY

Toilet Partition Hardware



Originally established in 1975, we have been supplying hardware for installing and maintaining toilet partitions, in public restrooms, for over 40 years.

### Section Table of Contents

<a href="#">How To Use The Catalog</a>	<a href="#">Pivot Hinges</a>
<a href="#">Cams</a>	<a href="#">Privacy cover</a>
<a href="#">Coat Hooks</a>	<a href="#">Pulls</a>
<a href="#">Concealed Latches</a>	<a href="#">Qwik Fix Kits</a>
<a href="#">Door Stops</a>	<a href="#">Strikes &amp; Keepers</a>
<a href="#">Fasteners &amp; Tools</a>	<a href="#">Supports</a>
<a href="#">Headrail Accessories</a>	<a href="#">Surface Latches</a>
<a href="#">Hinge Pins</a>	<a href="#">Wall Brackets</a>
<a href="#">Hinges</a>	<a href="#">Wall Stops</a>

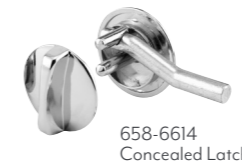
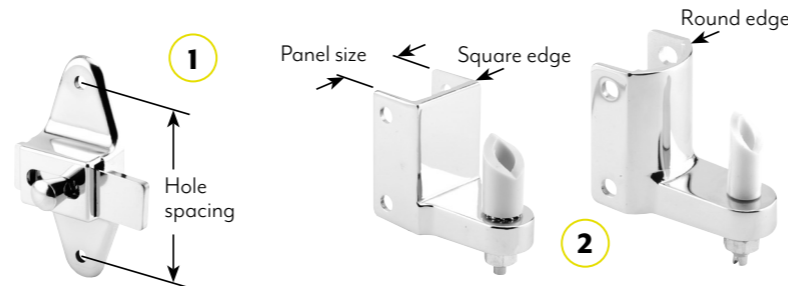
Clickable hyperlinks allow for fast navigation through catalog pages.

Clickable links for Prime-Line social media.

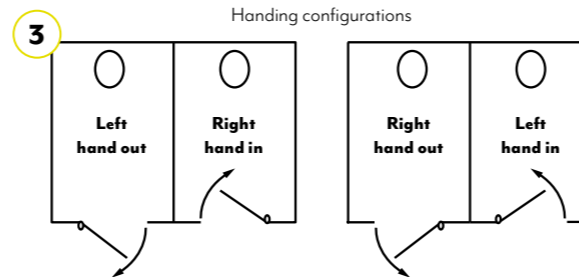


RETURN TO MASTER TOC

- In order to identify your system:**
1. Review the hole spacing (distance from the center of the first hole to the center of the second hole).
  2. Select the correct panel size as well as the panel type (either square edge or round edge).
  3. Review the handing guide below.



### Guide for ordering surface mounted hinges:



Clickable button jumps the currently viewed page back to the intro page where the Section Table of Contents is listed.



## Privacy Cover

Qty: 1 set of (2) 58 in. pieces / **5 sets per box.**

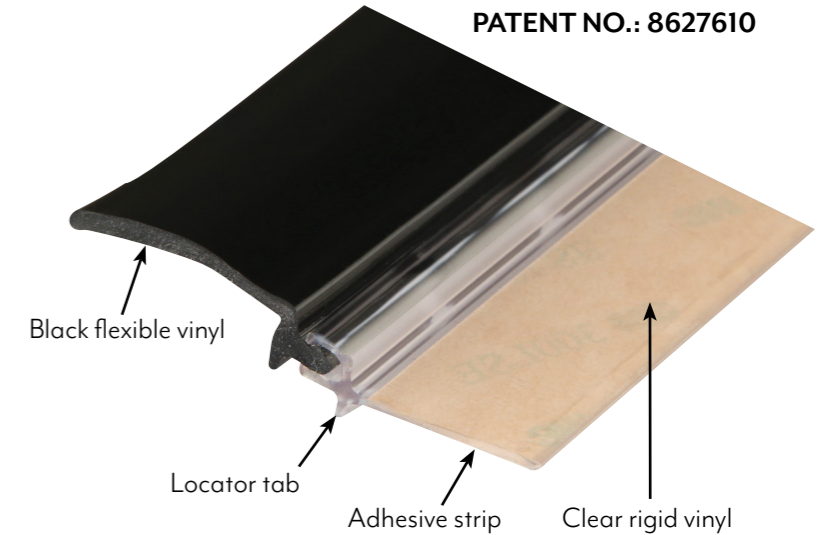
**650-1010**

### Features:

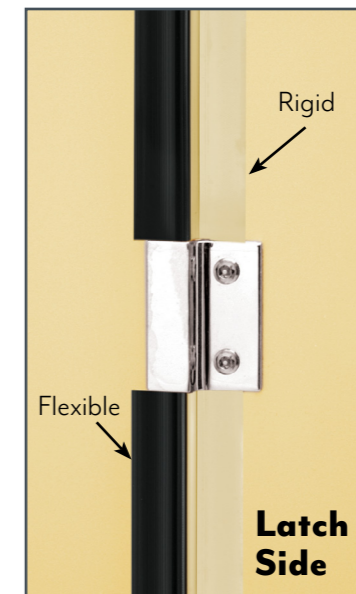
- Eliminates most door and panel gaps.
- Assures personal privacy.
- Self-adhesive for fastener free installation.
- Clear rigid vinyl blends to all partition colors and materials.
- Cut to fit for various partition door installations.
- Flexible vinyl flap adapts to multiple applications. The black color obscures vision.

### Ideal For:

Schools, dormitories, offices, sports complexes, restaurants, hospitals, churches and more!



*Clear rigid vinyl attaches to stall with 3M adhesive tape.  
Black colored flexible flap obscures gap view.*



“These covers were installed in the ladies room at a local theater. Complaints about gaps have led us to the Sentry site. These strips installed easily and quickly. They can also be cut to length with the proper tools. Highly recommended.”

– A satisfied customer, North Florida ★★★★★ **5/5**



Qty: 1, with fasteners.  
3-1/2 in. hole spacing.  
[656-6602](#) (Chrome plated zamak)  
[656-8297](#) (Satin cast stainless steel)



Qty: 1, with fasteners.  
3-1/2 in. hole spacing, for Santanna and others.  
[656-4051](#) (Clear anodized aluminum)



Qty: 1, with fasteners.  
3-1/2 in. hole spacing, for Santanna and others.  
[656-8543](#) (Clear anodized aluminum)



Qty: 1, with fasteners.  
Offset bar, 3-1/2 in. hole spacing.  
[656-8618](#) (Chrome plated zamak)  
[656-9486](#) (Satin cast stainless steel)



Qty: 1, with fasteners.  
Offset bar, 2-3/4 in. hole spacing.  
[656-7431](#) (Chrome plated zamak)



Qty: 1, with fasteners.  
2-3/4 in. hole spacing.  
[656-6596](#) (Chrome plated zamak)  
[656-7455](#) (Satin cast stainless steel)



Qty: 1, with fasteners.  
2-5/8 in. hole spacing.  
[656-7184](#) (Chrome plated zamak)



Qty: 1, with fasteners.  
1-7/8 in. hole spacing, use with stamped stainless steel strikes and keepers, for Ampco, Santanna and others.  
[656-7996](#) (Satin stamped stainless steel)



Qty: 1  
1-7/8 in. hole spacing.  
[656-9249](#) (Satin stamped stainless steel)



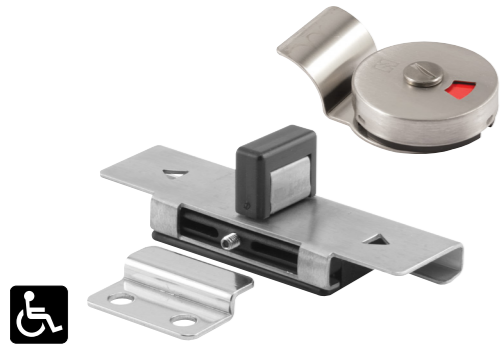
Qty: 1  
7/8 in. hole spacing.  
[656-6252](#) (Satin cast stainless steel)



Qty: 1 set, with fasteners.  
For inswinging doors, keeper has 7/8 in. hole spacing.  
[658-9873](#) (Satin stamped stainless steel)



Qty: 1 set, with fasteners.  
"Bobrick" style latch, for inswing doors, keeper has 7/8 in. hole spacing.  
[658-9875](#) (Satin stamped stainless steel)



Qty: 1 set, with fasteners.  
Indicator and pull, for inswinging doors, keeper has 7/8 in. hole spacing.

**658-9874** (Satin stamped stainless steel)



Qty: 1 set.  
2-11/32 in. long straight bolt, for 1 in. thick laminated doors.

**658-7528** (Chrome plated zamak)



Qty: 1 set.  
2-11/16 in. long bolt straight bolt, for 1 in. thick laminated doors.

**658-8999** (Chrome plated zamak)



Qty: 1 set.  
2-11/16 in. long offset bolt, for 1 in. thick steel doors.

**658-9000** (Chrome plated zamak)



Qty: 1 set.  
2-21/32 in. long flat tip bolt, for 1 in. thick steel doors.

**658-7112** (Chrome plated zamak)



Qty: 1 set.  
2-21/32 in. long flat tip bolt, for 1 in. thick steel doors.

**658-8996** (Chrome plated zamak)



Qty: 1 set.  
2-11/16 in. long offset bolt, for 1 in. thick steel doors.

**658-6614** (Chrome plated zamak)



Qty: 1 set.  
3-5/32 in. long offset bolt, for steel doors, for Sanymetal.

**658-2748** (Chrome plated zamak)



Qty: 1 set.  
Used by General and Knickerbocker.

**658-9093** (Chrome plated zamak)



Qty: 1 set, with fasteners.  
For steel doors, for Global.

**658-8918** (Chrome plated zamak)



Qty: 1 set.  
Used by General and Knickerbocker.

**658-7630** (Chrome plated zamak)



Qty: 1 set.  
Use with latch housing 658-6617, used by Flush Metal.

**658-6908** (Chrome plated zamak)

## Concealed Latches



Qty: 1 set.

Use with latch housing 658-6617, used by Flush Metal.

[658-8759](#) (Chrome plated zamak)



Qty: 1 set.

For 1 in. thick steel doors, for Sanyetal.

[658-9117](#) (Chrome plated zamak)



Qty: 1, with fasteners.

For steel doors, used by Mills.

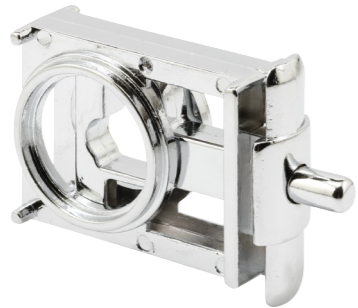
[658-6797](#) (Chrome plated zamak)



Qty: 1

For 1 in. thick steel doors, with outside "in use" indicator, used by Metpar.

[658-6863](#) (Chrome plated zamak)

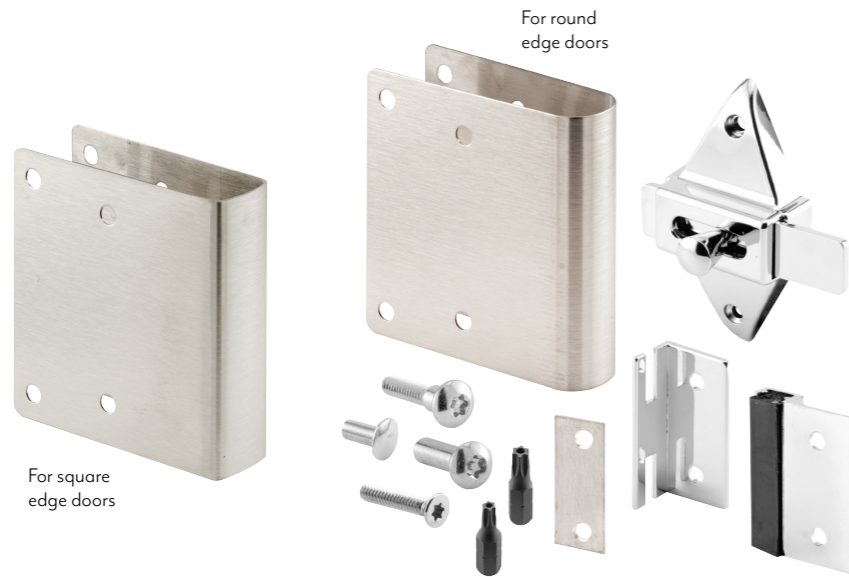


Qty: 1

Used by General Partitions.

[656-6618](#) (Unplated zamak)

[658-6618-1](#) (Chrome plated zamak)

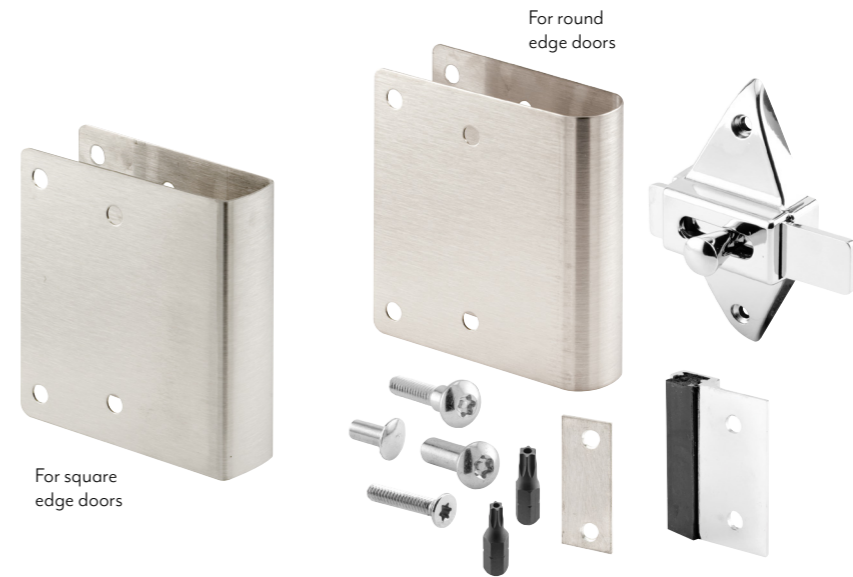


Qty: 1 set, with fasteners.

Kit for 1 in. inswing doors, replaces missing or broken concealed latches with a surface mount slide latch, stainless steel wrap-around cover plate, hides unsightly holes in doors, increases strength and durability.

[656-1000](#) (For round edge doors)

[656-1003](#) (For square edge doors)



Qty: 1 set, with fasteners.

Kit for 1 in. outswing doors, replaces missing or broken concealed latches with a surface mount slide latch, stainless steel wrap-around cover plate, hides unsightly holes in doors, increases strength and durability.

[656-1001](#) (For round edge doors)

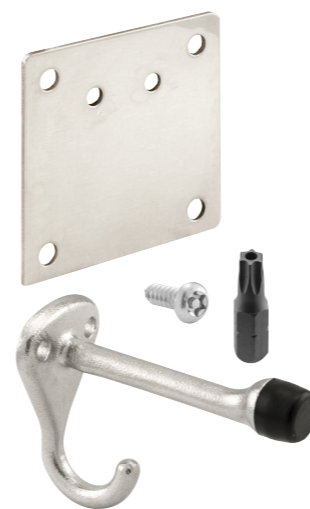
[656-1004](#) (For square edge doors)



Qty: 1 set, with fasteners.

Kit for 1 in. outswing doors, replaces missing or broken concealed latches with a surface mount slide latch, stainless steel wrap-around cover plate, hides unsightly holes in doors, increases strength and durability.

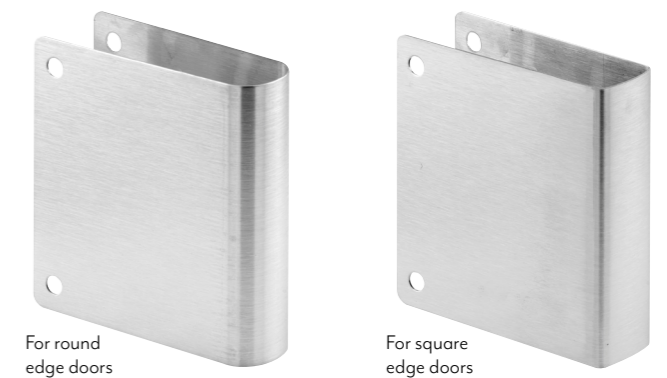
[656-1002](#) (For round edge doors)



Qty: 1 set, with fasteners.

Cover/mounting plate, hides damaged holes, bumper/hook, offers increased strength and durability.

[656-1006](#) (Satin stainless steel)



Qty: 1

For 1 in. thick doors, stainless steel wrap-around cover plate, hides unsightly holes in doors, increases strength and durability.

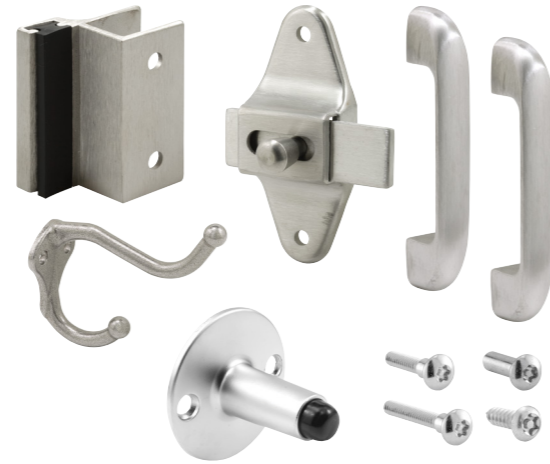
[658-4038-1](#) (For round edge doors)

[658-4039-1](#) (For square edge doors)



Qty: 1 set, with fasteners.  
Repair kit for inswinging partitions, for 1-1/4 in. square edge thick doors.

[656-6950](#) (Chrome plated zamak)



Qty: 1 set, with fasteners.  
Repair kit for outswinging partitions, for 3/4 in. square edge thick doors.

[656-3088](#) (Satin stainless steel)



Qty: 1 set, with fasteners.  
Repair kit for General inswinging laminate partitions.

[656-2727](#) (Chrome plated zamak)



Qty: 1 set, with fasteners.  
Repair kit for General inswinging laminate partitions, for 1 in. square edge thick doors.

[656-3079](#) (Chrome plated zamak)



Qty: 1 set, with fasteners.  
Repair kit for General & Rockville inswinging metal partitions, for 1-1/4 in. round edge thick doors.

[658-3026](#) (Chrome plated zamak)



Qty: 1 set, with fasteners.  
Repair kit for General & Rockville outswinging metal partitions, for 1-1/4 in. round edge thick doors.

[658-3027](#) (Chrome plated zamak)



Qty: 1, with fasteners.  
Inswing for slide latch, for 1-1/4 in. thick round edge posts, 1-1/2 in. hole spacing.  
[656-6515](#) (Chrome plated zamak)



Qty: 1, with fasteners.  
Inswing for throw latch (emergency entrance), for 1-1/4 in. thick round edge posts, 1-1/2 in. hole spacing.  
[656-6521](#) (Chrome plated zamak)



Qty: 1, with fasteners.  
Inswing for slide latch, for square edge posts, for 1-1/4 in. thick square edge posts. 1-1/2 in. hole spacing.  
[656-6482](#) (Chrome plated zamak)



Qty: 1  
Inswing for throw latch (emergency entrance), for square edge posts, 1-1/2 in. hole spacing.  
[656-2871](#) (Chrome plated zamak – for 1 in. thick posts, **with fasteners**)  
[656-6491](#) (Chrome plated zamak – for 1-1/4 in. thick posts, **with fasteners**)  
[658-8634](#) (Satin cast stainless steel – for 3/4 in. thick posts, **no fasteners**)  
[658-8635](#) (Satin cast stainless steel – for 1 in. thick posts, **no fasteners**)  
[658-8636](#) (Satin cast stainless steel – for 1-1/4 in. thick posts, **no fasteners**)



Qty: 1, with fasteners.  
Outswing for slide latch, for square edge posts, 1-1/2 in. hole spacing.  
[656-9375](#) (Chrome plated zamak – for 1 in. thick posts)  
[656-6488](#) (Chrome plated zamak – for 1-1/4 in. thick posts)  
[658-9910](#) (Satin cast stainless steel – for 3/4 in. thick posts, **no fasteners**)  
[656-9909](#) (Satin cast stainless steel – for 1 in. thick posts)



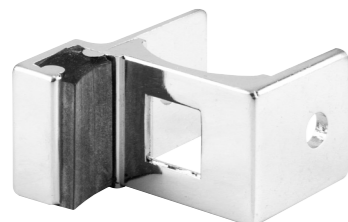
Qty: 1, with fasteners.  
In/outswing for concealed latch with round bolt, for 1-1/4 in. thick round edge posts.  
[656-6530](#) (Chrome plated zamak)



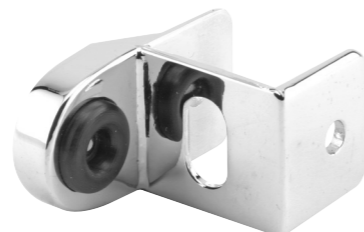
Qty: 1, with fasteners.  
In/outswing for concealed latch with flat bolt, for 1-1/4 in. thick round edge posts.  
[656-6533](#) (Chrome plated zamak)



Qty: 1, with fasteners.  
Inswing for throw latch (emergency entrance), for 1-1/4 in. thick round edge posts.  
[656-9942](#) (Chrome plated zamak)



Qty: 1, with fasteners.  
In/outswing for concealed latch with round bolt, for 1-1/4 in. thick round edge posts, for Knickerbocker.  
[656-7295](#) (Chrome plated zamak)



Qty: 1, with fasteners.  
In/outswing strike and keeper for concealed latch with round bolt, for 1-1/4 in. thick square edge posts.  
[656-7633](#) (Chrome plated zamak)



Qty: 1, with fasteners.  
In/outswing for slide latch, 1-1/2 in. hole spacing.  
[656-6542](#) (Chrome plated zamak)



Qty: 1, with fasteners.  
Inswing for slide latch, 1-1/2 in. hole spacing.  
[656-6536](#) (Chrome plated zamak)



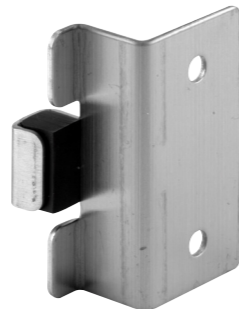
Qty: 1, with fasteners.  
Inswing for throw latch (emergency entrance), 1-1/2 in. hole spacing.  
[656-6539](#) (Chrome plated zamak)



Qty: 1 set.  
Inswing for throw latch (emergency entrance), 1-1/2 in. hole spacing.  
[658-2864](#) (Chrome plated zamak)



Qty: 1 set.  
Inswing for throw latch, 1-1/2 in. hole spacing.  
[650-2759](#) (Chrome plated zamak)



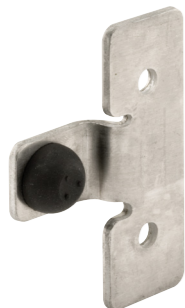
Qty: 1, with fasteners.  
Outswing, 1-7/8 in. hole spacing, for 1 in. thick doors.  
[656-9837](#) (Satin stamped stainless steel)



Qty: 1, with fasteners.  
Outswing, 1-7/8 in. hole spacing.  
[656-9978](#) (Satin stamped stainless steel – for 3/4 in. doors)  
[656-9984](#) (Satin stamped stainless steel – for 1 in. doors)



Qty: 1, with fasteners.  
1-1/2 in. hole spacing, for Bobrick #1040.  
[656-4011](#) (Satin stamped stainless steel)



Qty: 1, with fasteners.  
1-1/2 in. hole spacing, for Bobrick #1040.  
[656-4008](#) (Satin stamped stainless steel)



Qty: 1  
Outswing for slide latch, for 1 in. thick square edge posts, 2-1/2 in. hole spacing.  
[658-2875](#) (Clear anodized extruded aluminum)



Qty: 1  
Inswing for slide latch, for 1 in. thick square edge posts, 2-1/2 in. hole spacing.  
[658-2873](#) (Clear anodized extruded aluminum, **no fasteners**)  
[656-4046](#) (Brite dip extruded aluminum, **with fasteners**)



Qty: 1  
Rubber, 1/2 in. O.D.  
[658-6866](#) (Black)



Qty: 1, with fasteners.  
Rubber bumper, 3-1/2 in. projection.  
[656-6632](#) (Chrome plated zamak)



Qty: 1, with fasteners.  
Rubber bumper, 7/8 in. hole spacing, 3 in. projection.  
[656-6626](#) (Chrome plated zamak)  
[656-6626-T](#) (Chrome plated zamak, **with T-27 fasteners**)  
[656-4057](#) (Satin cast stainless steel – with 1/4 in. I.D. holes)  
[656-7452](#) (Satin cast stainless steel)



Qty: 1, with fasteners.  
Rubber bumper, 1-1/8 in. hole spacing, 3 in. projection.  
[656-7214](#) (Chrome plated zamak)  
[656-7214-T](#) (Chrome plated zamak, **with T-27 fasteners**)



Qty: 1  
3 in. projection.  
[656-6635](#) (Chrome plated zamak, **with fasteners**)  
[658-6635-1](#) (Satin cast stainless steel, **no fasteners**)



Qty: 1, with fasteners.  
3 in. projection.  
[656-9537](#) (Satin cast stainless steel)



Qty: 1, with fasteners.  
7/8 in. hole spacing, 1-9/16 in. projection.  
[656-2770](#) (Chrome plated zamak)



Qty: 1, with fasteners.  
Cast zamak, 5-1/8 in. hole spacing, 2-1/8 in. projection.  
[658-1015](#) (Aluminum painted)



Qty: 1, with fastener.  
Replacement rubber tip for door stops.  
[658-1051](#) (Black)



Qty: 1, with fasteners.  
Cast zamak, rubber tip, 1-3/16 in. hole spacing, 4 in. drop down.  
[658-1002](#) (Bronze finish) [658-1003](#) (Chrome finish)



Qty: 1, with fasteners.  
Heavy duty cast zamak, rubber tip, 4 in. drop down.  
[658-1007](#) (Bronze finish) [658-1008](#) (Chrome finish)

## Door, Floor & Wall Stops



Qty: 1, with fasteners.  
Cast iron, rubber tip, 4 in. drop down.  
[658-1013](#) (Aluminum finish)



Qty: 1, with fasteners.  
Cast brass, 3-3/8 in. height, 2-1/8 in. O.D. base.  
[658-1035](#) (Brushed chrome)



Qty: 1, with fasteners.  
Cast brass, 15/16 in. hole spacing, 1 in. height,  
1-3/4 in. O.D. base.  
[658-1025](#) (Brushed chrome) [658-1024](#) (Classic bronze)



Qty: 1, with fasteners.  
Cast brass, 1 in. hole spacing, 1-5/16 in. height,  
1-11/16 in. O.D. base.  
[658-1030](#) (Brushed chrome) [658-1027](#) (Satin nickel)



Qty: 1, with fasteners.  
Steel, 1-1/8 in. hole spacing, 2-11/16 in. height.  
[658-1022](#) (Brushed aluminum)



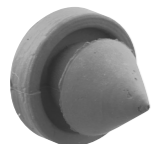
Qty: 1, with fasteners.  
Door stop, 1-19/32 in. hole spacing, 2 in. projection.  
[656-6638](#) (Chrome plated zamak)  
[656-6638-T](#) (Chrome plated zamak, **with T-27 fasteners**)  
[656-9492](#) (Satin cast stainless steel)



Qty: 1, with fastener.  
2-1/2 in. O.D. base, 1 in. projection.  
[658-1043](#) (Brushed stainless steel)



Qty: 1, with fastener.  
2-1/2 in. O.D. base, 1 in. projection.  
[658-1046](#) (Brushed stainless steel)



Qty: 100  
Rubber, 1/2 in. O.D., 9/16 in. projection.  
[658-1055](#) (Gray)

## Door Pulls



Qty: 1, with fasteners.  
3/4 in. O.D., 6 in. hole spacing.  
[659-1049](#) (Satin aluminum)



Qty: 1, with fasteners.  
5 in. hole spacing.  
[656-8229](#) (Stamped stainless steel)



Qty: 1, with fasteners.  
4 in. hole spacing.  
[656-9870](#) (Chrome plated zamak)



Qty: 1, with fasteners.  
3-1/2 in. hole spacing.  
[656-6641](#) (Chrome plated zamak)  
[656-9405](#) (Satin cast stainless steel)



Qty: 1 set, with fasteners.  
3-1/2 in. hole spacing.  
[658-2701](#) (Chrome plated zamak)



Qty: 1, with fasteners.  
2-3/4 in. hole spacing.  
[656-6644](#) (Chrome plated zamak)

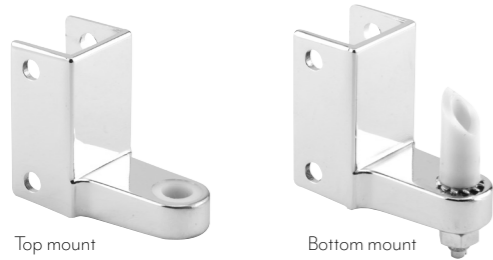


Qty: 1, with fasteners.  
High-rise, 3-3/8 in. projection.  
[656-9867](#) (Satin cast stainless steel)



Qty: 1, with fasteners.  
Foot operated, eliminates the need to make contact with a door when pulling it open, helping minimize exposure to germs.  
[650-2703](#) (Brushed stainless steel)

Pivot Hinges & Door Inserts

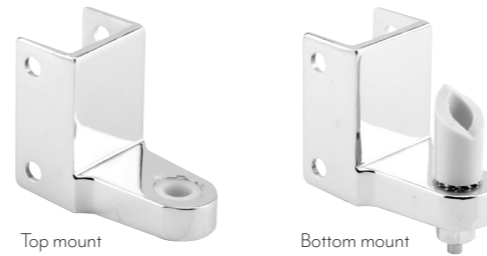


Top mount Bottom mount

Qty: 1, with fasteners.

For 1 in. thick square edge posts, 1-9/32 in. pivot offset, 1-1/2 in. hole spacing, used by General Application (G-4).

- [656-8840](#) (Chrome plated zamak – top mount)
- [656-8843](#) (Chrome plated zamak – bottom mount)
- [656-8843-T](#) (Chrome plated zamak – bottom mount, **with T-27 fasteners**)
- [656-9594](#) (Satin stainless steel – bottom mount)



Top mount Bottom mount

Qty: 1, with fasteners.

For 1-1/4 in. thick square edge posts, 1-9/32 in. pivot offset, 1-1/2 in. hole spacing, used by General & American Sanitary.

- [656-6551](#) (Chrome plated zamak – top mount)
- [656-6557](#) (Chrome plated zamak – bottom mount)
- [656-6557-T](#) (Chrome plated zamak – bottom mount, **with T-27 fasteners**)

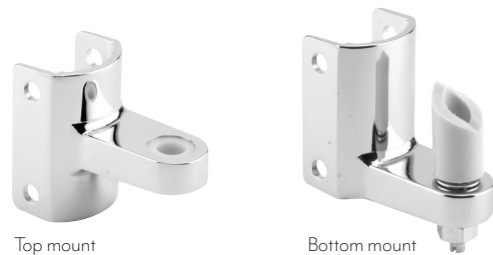


Top mount Bottom mount

Qty: 1, with fasteners.

For 1-1/4 in. thick round edge posts, top hinge has 1-3/32 in. pivot offset, bottom hinge has 1-5/32 in. pivot offset, 1-1/2 in. hole spacing, used by Flush Metal.

- [656-6545](#) (Chrome plated zamak – top mount)
- [656-6548](#) (Chrome plated zamak – bottom mount)
- [656-6548-T](#) (Chrome plated zamak – bottom mount, **with T-27 fasteners**)



Top mount Bottom mount

Qty: 1, with fasteners.

For 1-1/4 in. thick round edge posts, 1-3/32 in. pivot offset, 1-1/2 in. hole spacing, used by Metpar.

- [656-7217](#) (Chrome plated zamak – top mount)
- [656-7220](#) (Chrome plated zamak – bottom mount)



Top mount Bottom mount

Qty: 1

For 1-1/4 in. thick round edge posts, top hinge has 1-3/32 in. pivot offset, bottom hinge has 1-5/32 in. pivot offset, 1-1/2 in. hole spacing, used by All-American.

- [650-7040](#) (Chrome plated zamak – top mount, **no fasteners**)
- [656-7040](#) (Chrome plated zamak – top mount, **with fasteners**)
- [650-7283](#) (Chrome plated zamak – bottom mount, **no fasteners**)
- [656-7283](#) (Chrome plated zamak – bottom mount, **with fasteners**)



Qty: 1, with fasteners.

For 1-1/4 in. thick round edge posts, 1-13/32 in. pivot offset, 1-1/8 in. hole spacing, used by General & Knickerbocker.

- [656-7265](#) (Chrome plated zamak – top mount)



Qty: 1, with fasteners.

For 1-1/4 in. thick round edge posts, 1-1/16 in. pivot offset, 1-1/4 in. hole spacing, used by Sanymetal.

- [658-7169](#) (Chrome plated zamak – top mount)



Qty: 1 set, with fasteners.

For 1-1/4 in. thick square edge posts, 1-1/4 in. pivot offset, 1-3/8 in. hole spacing, for Mills.

- [658-2905](#) (Chrome plated zamak)



Top mount Bottom mount

Qty: 1, with fasteners.

Wall mounted, 1-9/32 in. pivot offset, used by General Applications (G-3).

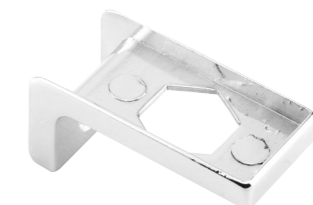
- [656-1047](#) (Satin cast stainless steel – top mount)
- [656-1101](#) (Satin cast stainless steel – bottom mount)



Qty: 1, with fastener.

Open ended, for 1 in. thick square edge doors, bottom insert has 3/4 in. hex and is for large cams.

- [656-2472](#) (Chrome plated zamak – bottom mount)



Qty: 1, with fastener.

Close ended, for 1 in. thick square edge doors, bottom insert has 3/4 in. hex, used by Ampco & General.

- [656-6593](#) (Chrome plated zamak – bottom mount)

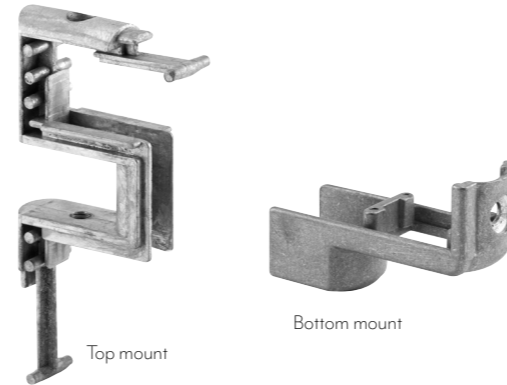


Qty: 1, with fastener.  
Open ended, for 1 in. thick square edge doors, bottom insert has 29/32 in. square, used by Fiat.  
[656-2484](#) (Chrome plated zamak – bottom mount)



Qty: 1  
For 1 in. thick round edge doors, used by General.  
[658-7625-1](#) (Chrome plated zamak – top mount)  
[658-7619-1](#) (Chrome plated zamak – bottom mount)  
[658-7625](#) (Unplated zamak – top mount)  
[658-7619](#) (Unplated zamak – bottom mount)

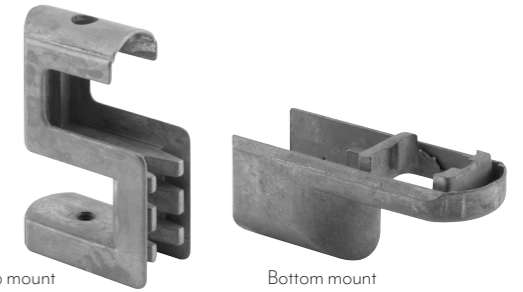
Qty: 1, with fasteners.  
For 1 in. thick round edge doors, used by Flush Metal.  
[656-9465](#) (Chrome plated zamak – bottom mount)  
[656-8972](#) (Unplated zamak – top mount)  
[656-7822](#) (Unplated zamak – bottom mount)



Qty: 1  
Plastic, square, unshaved, 7/8 in. O.D., 11/16 in. I.D.  
[658-7232](#)



Qty: 1  
Plastic, round, for 5/8 in. pintle, 3/4 in. O.D.  
[658-6923](#)



Qty: 1, with fasteners.  
For 1 in. thick round edge doors, used by Ampco & Metpar.  
[656-7235](#) (Chrome plated zamak – bottom mount)  
[656-7669](#) (Unplated zamak – top mount)  
[656-7328](#) (Unplated zamak – bottom mount)



Qty: 1 set.  
For “M” hinges, plastic, round, 3/4 in. O.D.  
[658-7534](#)

## Pintles, Candle Cams & Hinge Pins



Qty: 1, with fastener.  
Plastic and steel, 5/8 in. O.D, 5/16-18 thread.

[658-6986](#)



Qty: 1, with fastener.  
Plastic and steel, 1/2 in. O.D, 5/16-18 thread.

[650-7145](#)



Qty: 1, with fastener.  
Plastic and steel, 5/8 in. O.D., 10-32-1/2 thread, for Knickerbocker.

[658-7106](#)



Qty: 1 set.  
Plastic and steel pintle, 1/2 in. O.D, 5/16-18 thread, plastic pivot hinge, keylock for 1/2 in. pintle.

[656-3157](#)



Qty: 1, with fasteners.  
Plastic, 7/8 in. O.D., for Metpar.

[658-7672](#)



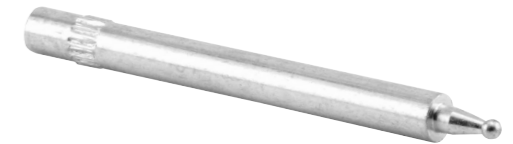
Qty: 1  
For steel doors, plastic, 1 in. O.D., for Knickerbocker.

[658-7205](#)



Qty: 1  
Threaded steel, 5/16-18 thread, 3/8 in. O.D., used by Ampco & Metpar.

[658-6875](#)



Qty: 1  
Knurled steel, 1/4 in. O.D., used by General.

[658-7663](#)



Qty: 1  
Knurled steel, 10-24 thread, 3/8 in. O.D.

[658-7055](#)



Qty: 1  
Steel, 3/8 in. O.D., used by Shanahan.

[658-7226](#)



Qty: 1  
Knurled plastic, 1/4-20 thread, 3/8 in. O.D., used by Sanymetal.

[658-6911](#)

Hinges



Top hinge



Bottom hinge

Qty: 1 set, with fasteners.  
Top and bottom, surface mounted, 1-1/2 in. hole spacing.

[658-9009](#) (Satin stamped stainless steel – R.H. in/L.H. out)



Top hinge



Bottom hinge

R.H. in/L.H. out shown

Qty: 1 set, with fasteners.  
Heavy duty, top and bottom, surface mounted, 1-1/2 in. hole spacing.

[658-8237](#) (Satin stamped stainless steel – R.H. in/L.H. out)  
[658-8240](#) (Satin stamped stainless steel – L.H. in/R.H. out)  
[658-8241](#) (Satin stamped stainless steel – non-handed, **no fasteners**)



Top hinge



Bottom hinge

R.H. in/L.H. out shown

Qty: 1 set, with fasteners.  
Square barrel, top and bottom, surface mounted, 1-1/2 in. hole spacing.

[658-2019](#) (Satin cast stainless steel – R.H. in/L.H. out)  
[658-2022](#) (Satin cast stainless steel – L.H. in/R.H. out)



Top hinge



Bottom hinge

R.H. in/L.H. out shown

Qty: 1 set, with fasteners.  
Heavy duty, top and bottom, surface mounted, 1-1/2 in. hole spacing.

[658-2870](#) (Satin stamped stainless steel – R.H. in/L.H. out)  
[658-2869](#) (Satin stamped stainless steel – L.H. in/R.H. out)



Top hinge



Bottom hinge

R.H. in/L.H. out shown

Qty: 1 set, with fasteners.  
Top and bottom, surface mounted, 1-1/2 in. hole spacing.

[658-8621](#) (Satin cast stainless steel – R.H. in/L.H. out)  
[658-8056](#) (Satin cast stainless steel – L.H. in/R.H. out)



Top hinge



Bottom hinge

R.H. in/L.H. out shown

Qty: 1 set, with fasteners.  
Top and bottom, surface mounted, 1-1/2 in. hole spacing.

[658-6575](#) (Chrome plated brass – R.H. in/L.H. out)  
[658-6572](#) (Chrome plated brass – L.H. in/R.H. out)



Top hinge

Bottom hinge

R.H. in/L.H. out shown

Qty: 1 set.  
Top and bottom, surface mounted, all metal inserts, 1-1/2 in. hole spacing, satin cast stainless steel.

[656-8624](#)

[650-8626](#)

[656-8625](#)

[650-8627](#)

	Handing	Hinges	Fasteners
<a href="#">656-8624</a>	R.H. in/L.H. out	Top & bottom	Yes
<a href="#">650-8626</a>	R.H. in/L.H. out	2 Top & 1 bottom	No
<a href="#">656-8625</a>	L.H. in/R.H. out	Top & bottom	Yes
<a href="#">650-8627</a>	L.H. in/R.H. out	2 Top & 1 bottom	No



Qty: 1 set.

Top and bottom, round barrel, for 1 in. thick panels, clear anodized aluminum.

	Handing	Hinges	Fasteners
<a href="#">656-2843</a>	R.H. in/L.H. out	Top & bottom	Yes
<a href="#">658-2859</a>	R.H. in/L.H. out	Top only	No
<a href="#">656-2844</a>	L.H. in/R.H. out	Top & bottom	Yes
<a href="#">658-2858</a>	L.H. in/R.H. out	Top only	No



Qty: 1 set, with fasteners.

Top and bottom, roller bearing design, for phenolic and solid plastic applications, for 3/4 in. thick panels with inserts, for 1 in. thick panels without inserts, 1-1/2 in. hole spacing.

[656-6040-T](#) (Satin stamped stainless steel)



Qty: 1 set.

Cam and pintle, for top round barrel hinges, for Comtec/Santana.

[658-2872](#)



Qty: 1 set.

Cam and pintle, for bottom round barrel hinges, for Comtec/Santana.

[658-2874](#)



Qty: 1 set.

Set includes caps, pin, pintle, cam and retaining ring, for round barrel hinge.

[658-7037](#)



Qty: 1

Continuous (piano) hinge, 16 gauge, 1/8 in. pin with spring, satin stamped stainless steel.

[658-4049](#)

[656-9399](#)

[656-9258](#)

	Handing	Length	Hole Count	Hole Spacing	Fasteners
<a href="#">658-4049</a>	L.H. in/R.H. out	54 in.	6	10-1/4 in.	No
<a href="#">656-9399</a>	R.H. in/L.H. out	57-1/2 in.	6	11 in.	Yes
<a href="#">656-9258</a>	L.H. in/R.H. out	57-1/2 in.	6	11 in.	Yes



Qty: 1

Cam-closing (piano) hinge, 14 gauge, 1/4 in. pin, satin stamped stainless steel.

[658-9400R](#)

[658-9402R](#)

	Handing	Length	Hole Count	Hole Spacing
<a href="#">658-9400R</a>	Non-handed	57-1/2 in.	6	13 in.
<a href="#">658-9402R</a>	Non-handed	54-1/2 in.	5	11 in.

## Wall Brackets



Qty: 1, with fasteners.  
 Two ear, for 1-1/4 in. thick panels, 1-3/4 in. length.  
[656-6377](#) (Chrome plated zamak)  
[656-6377-T](#) (Chrome plated zamak, **with T-27 fasteners**)



Qty: 1, with fasteners.  
 Two ear, for 1 in. thick panels, 3-1/2 in. length.  
[656-6365](#) (Chrome plated zamak)

Qty: 1  
 Two ear, chrome plated zamak.

Panel Size	Length	Width	Fasteners
3/4 in.	2-1/2 in.	3 in.	No
1 in.	2-1/2 in.	4 in.	Yes
1 in.	2-1/2 in.	4 in.	Yes (T-27)
1 in.	3-1/2 in.	4 in.	Yes



[658-8372](#)

[656-4021](#)

[656-4021-T](#)

[656-6446](#)

Qty: 1, with fasteners.  
 Two ear, 2-1/2 in. length.

	Finish	Panel Size	Width	
<a href="#">656-9033</a>	Chrome plated zamak	1/2 in.	2-7/8 in.	
<a href="#">656-6350</a>	Chrome plated zamak	3/4 in.	3 in.	
<a href="#">656-6353</a>	Chrome plated zamak	7/8 in.	3-1/2 in.	
<a href="#">656-6356</a>	Chrome plated zamak	1 in.	4 in.	
<a href="#">656-6356-T</a>	Chrome plated zamak	1 in.	4 in.	(T-27 fasteners)
<a href="#">656-6368</a>	Chrome plated zamak	1-1/4 in.	4 in.	
<a href="#">656-6368-T</a>	Chrome plated zamak	1-1/4 in.	4 in.	(T-27 fasteners)



Qty: 1, with fasteners.  
 One ear, for 1-1/4 in. thick panels, 1-5/8 in. length.  
[656-6404](#) (Chrome plated zamak)

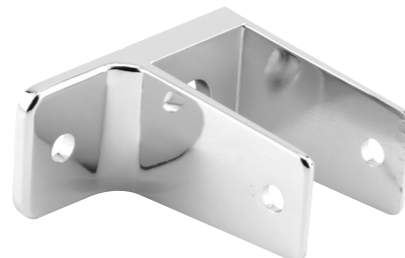


Qty: 1, with fasteners.  
 One ear, 3-1/2 in. length, chrome plated zamak.

	Panel Size	Width
<a href="#">656-6407</a>	1 in.	2-3/4 in.
<a href="#">656-6410</a>	1-1/4 in.	2-7/8 in.

Qty: 1  
 One ear, 2-1/2 in. length.

	Finish	Panel Size	Width	Fasteners
<a href="#">656-9499</a>	Chrome plated zamak	1/2 in.	1-3/4 in.	Yes
<a href="#">656-9282</a>	Chrome plated zamak	3/4 in.	2 in.	Yes
<a href="#">656-6383</a>	Chrome plated zamak	1 in.	2-5/8 in.	Yes
<a href="#">656-6395</a>	Chrome plated zamak	1-1/4 in.	2-3/4 in.	Yes
<a href="#">656-6395-T</a>	Chrome plated zamak	1-1/4 in.	2-3/4 in.	Yes (T-27)
<a href="#">656-9387</a>	Satin stainless steel	3/4 in.	2 in.	Yes
<a href="#">658-8786</a>	Satin stainless steel	1-1/4 in.	2-3/4 in.	No



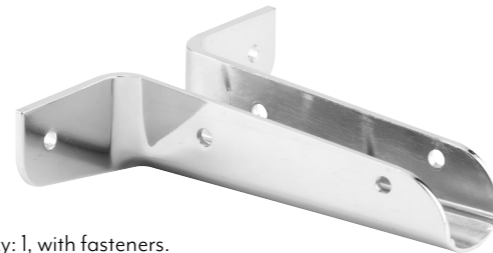
Qty: 1 set.  
 Two piece, fits any panel size, 2-1/2 in. length.  
[658-8372](#) (Chrome plated zamak)



Qty: 1 set, with fasteners.  
 Two piece, fits any panel size, 1 in. hole spacing.  
[656-6437](#) (Chrome plated zamak – 2-1/2 in. length)  
[656-6437-T](#) (Chrome plated zamak – 2-1/2 in. length, **with T-27 fasteners**)  
[656-6434](#) (Chrome plated zamak – 3-1/2 in. length)  
[656-6434-T](#) (Chrome plated zamak – 3-1/2 in. length, **with T-27 fasteners**)



Qty: 1 set, with fasteners.  
Two piece, fits any panel size, 1-3/4 in. length.  
**656-8342** (Chrome plated zamak)



Qty: 1, with fasteners.  
Wing bracket, chrome plated zamak.

	Panel Size	Length	Width
<b>656-6440</b>	1 in.	12 in.	7 in.
<b>656-6443</b>	1-1/4 in.	6 in.	6-1/4 in.



Qty: 1, with fasteners.  
"U" bracket, 1-3/8 in. length.

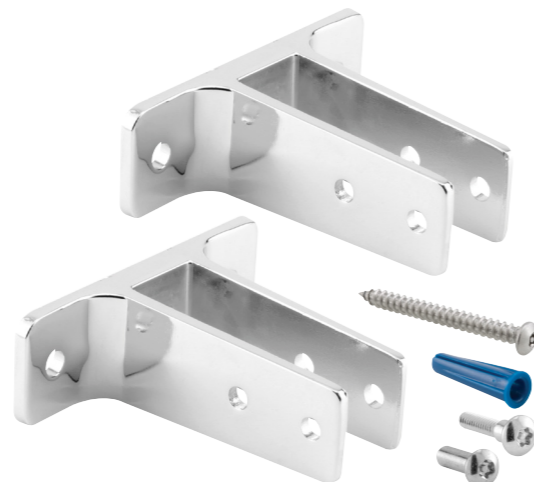
	Finish	Panel Size	Width
<b>656-6413</b>	Chrome plated zamak	3/4 in.	1 in.
<b>656-6416</b>	Chrome plated zamak	7/8 in.	1-5/32 in.
<b>656-6419</b>	Chrome plated zamak	1 in.	1-1/4 in.
<b>656-6422</b>	Chrome plated zamak	1-1/4 in.	1-1/2 in.
<b>656-9435</b>	Satin stainless steel	1 in.	1-1/4 in.



Qty: 1, with fasteners.  
"U" bracket, for 1-1/4 in. thick panels, 2-1/2 in. length.  
**656-6428** (Chrome plated zamak)



Qty: 1 set, with fasteners.  
2 ear, for 1-1/4 in. panel size, 2-1/2 in. length.  
**656-2934** (Chrome plated zamak)

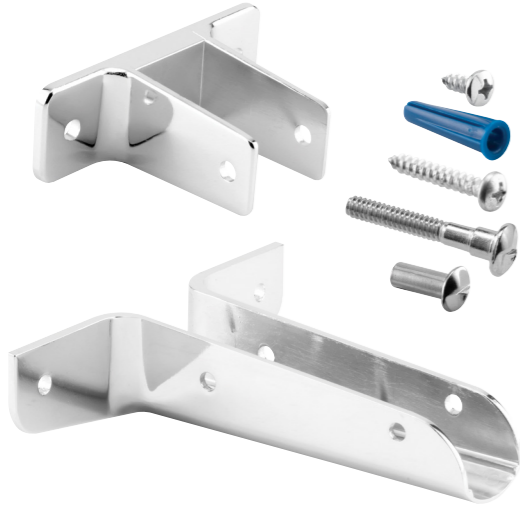


Qty: 1 set, with fasteners.  
2 ear, for 1 in. panel size, 3-1/2 in. length.  
**658-2901** (Chrome plated zamak)



Qty: 1 set.  
One ear, 2-1/2 in. length.

	Finish	Panel Size	Width	Fasteners
<b>656-2893</b>	Chrome plated zamak	3/4 in.	2 in.	Yes (T-27)
<b>658-2898</b>	Chrome plated zamak	1-1/4 in.	2-3/4 in.	Yes (T-27)



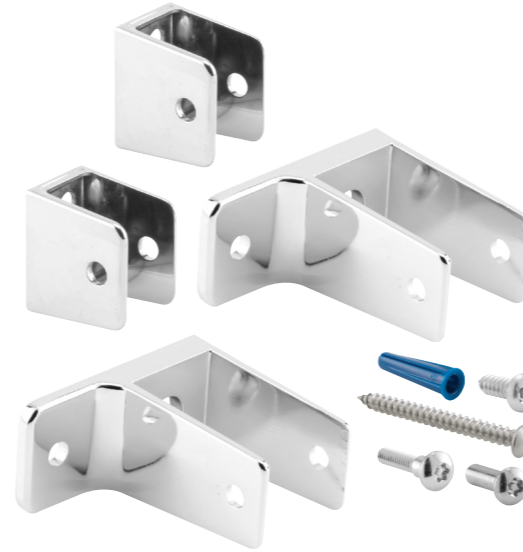
Qty: 1 set, with fasteners.  
2 ear wall bracket, fits 1-1/4 in. panel size, 4 in. width,  
2 ear wing bracket, fits 1-1/4 in. panel size, 6-1/4 in.  
width.

[656-6947](#) (Chrome plated zamak)



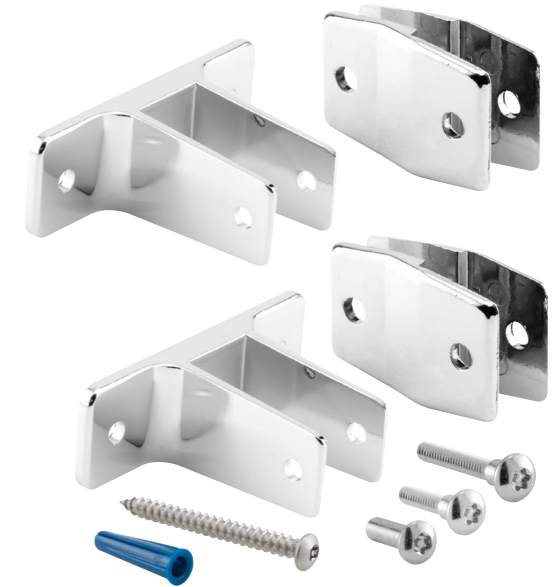
Qty: 1 set, with fasteners.  
2 ear wall bracket, fits 1 in. panel size, 4 in. width,  
"U" bracket, fits 1 in. panel size, 1-1/4 in. width.

[658-2896](#) (Chrome plated zamak)



Qty: 1 set, with fasteners.  
1 ear wall bracket, fits 1 in. panel size, 2-5/8 in. width,  
"U" bracket, fits 1 in. panel size, 1-1/4 in. width.

[658-2897](#) (Chrome plated zamak)



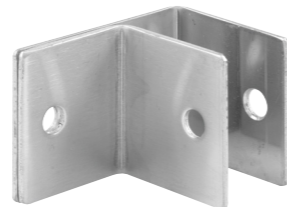
Qty: 1 set, with fasteners.  
2 ear wall bracket, fits 1 in. panel size, 4 in. width,  
alcove clip, 1/8 in. offset per clip, 1-1/2 in. hole spacing.

[658-2900](#) (Chrome plated zamak)



Qty: 1 set, with fasteners.  
1 ear wall bracket, fits 1 in. panel size, 2-5/8 in. width,  
alcove clip, 1/8 in. offset per clip, 1-1/2 in. hole spacing.

[658-2899](#) (Chrome plated zamak)

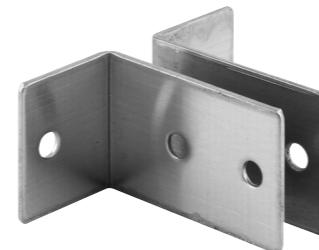


Qty: 1  
One ear, stamped stainless steel, 14 gauge.

[658-8148-1](#)

[658-8180](#)

Panel Size	Length	Width
1/2 in.	1-1/2 in.	1-7/8 in.
1-1/4 in.	1-3/4 in.	2-11/16 in.



Qty: 1 set.  
Two piece, 14 gauge, fits any panel size, 2-1/2 in. length.  
[658-1920](#) (Stamped stainless steel)



Qty: 1, with fasteners.  
"U" bracket, stamped stainless steel,  
14 gauge, 1-1/2 in. length.

[656-8193](#)

[656-8196](#)

[656-8202](#)

[656-8202-T](#)

[656-8205](#)

Panel Size	Width
1/2 in.	5/8 in.
3/4 in.	15/16 in.
1 in.	1-3/16 in.
1 in.	1-3/16 in.
1-1/4 in.	1-3/8 in.

(T-27 fasteners)

Wall Brackets



Qty: 1 set with fasteners.  
Two ear, stamped stainless steel.

**656-3024**

**656-3030**

Panel Size	Height	Width	Set Includes
3/4 in.	2-1/2 in.	3-3/8 in.	3 brackets
1 in.	3-1/2 in.	3-11/16 in.	2 brackets

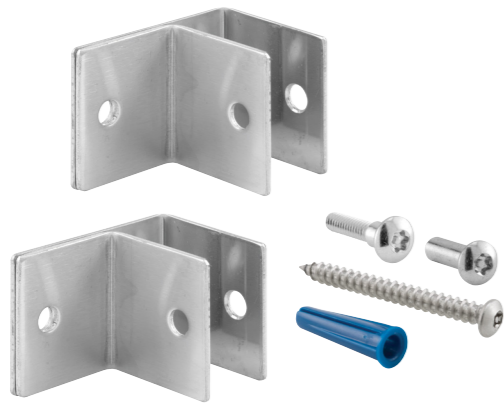


Qty: 1 set with fasteners.  
2 ear bracket, "U" bracket, stamped stainless steel.

**656-2892-SS**

**656-3002**

Panel Size	Height	Width	"U" Bracket Height	"U" Bracket Width
1/2 in.	2-1/2 in.	3-3/16 in.	1-1/2 in.	5/8 in.
1 in.	2-1/2 in.	3-11/16 in.	1-1/2 in.	1-3/16 in.

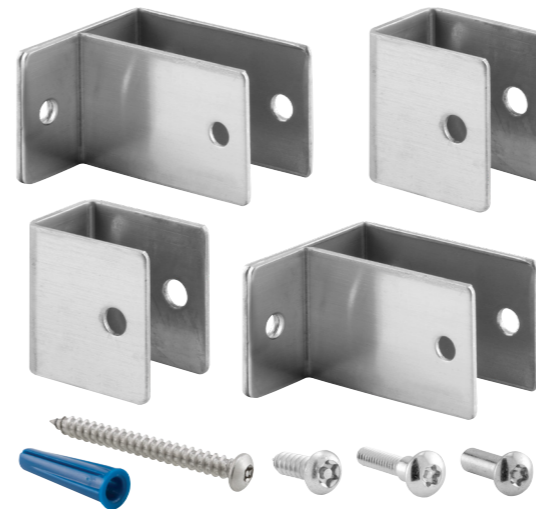


Qty: 1 set with fasteners.  
One ear, stamped stainless steel.

**656-2893-SS**

**656-3012**

Panel Size	Height	Width
3/4 in.	2-1/2 in.	2-1/8 in.
1 in.	2-1/2 in.	2-3/8 in.



Qty: 1 set with fasteners.  
1 ear bracket, "U" bracket, stamped stainless steel.

**656-2891-SS**

**656-3001**

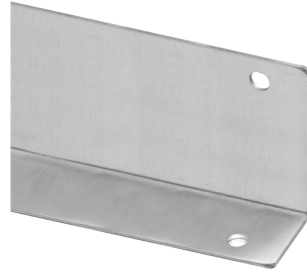
Panel Size	Bracket Height	Bracket Width	"U" Bracket Height	"U" Bracket Width
1/2 in.	2-1/2 in.	2-7/8 in.	1-1/2 in.	5/8 in.
1 in.	2-1/2 in.	2-3/8 in.	1-1/2 in.	1-3/16 in.

## Wall Brackets & Pilaster Shoes



Qty: 1  
"L" angle, galvanized steel, 18 gauge, 1 in. width, 2-3/4 in. height, 9-13/16 in. hole centers.

[658-2431](#)



Qty: 1  
"L" angle, stamped stainless steel, continuous roll formed, 18 gauge, 1-1/4 in. width, 2-1/2 in. height.

[658-1519](#)

Panel Size	Length	Hole Count	Hole Spacing
Any	57 in.	5	14 in.

Qty: 1  
Two ear, stamped stainless steel, continuous roll formed, 18 gauge, 2-1/2 in. height.

[658-1503](#)

[658-1521](#)

[658-1520](#)

[658-1515](#)

[658-1500](#)

[658-1506](#)

[658-1522](#)

Panel Size	Length	Width	Hole Count	Hole Spacing
1/2 in.	41 in.	3-1/8 in.	4	13 in.
3/4 in.	41 in.	3-3/8 in.	4	13 in.
1 in.	41 in.	3-5/8 in.	4	13 in.
1 in.	54 in.	3-5/8 in.	5	13 in.
1/2 in.	57 in.	3-1/8 in.	5	14 in.
3/4 in.	57 in.	3-3/8 in.	5	14 in.
1 in.	57 in.	3-5/8 in.	5	14 in.



Qty: 1  
One ear, stamped stainless steel, continuous roll formed wall brackets, 18 gauge, 2-1/2 in. height, hole count of 5.

[658-1516](#)

[658-1501](#)

[658-1507](#)

[658-1523](#)

[658-1525](#)

Panel Size	Length	Width	Hole Spacing
1 in.	54 in.	2-3/8 in.	13 in.
1/2 in.	57 in.	1-7/8 in.	14 in.
3/4 in.	57 in.	2-1/8 in.	14 in.
1 in.	57 in.	2-3/8 in.	14 in.
1-1/4 in.	57 in.	2-5/8 in.	14 in.



Qty: 1  
"U" bracket, stamped stainless steel, continuous roll formed, 18 gauge, 1-1/2 in. height, hole count of 5.

[658-1517](#)

[658-1502](#)

[658-1508](#)

[658-1524](#)

Panel Size	Length	Width	Hole Spacing
1 in.	54 in.	2-3/8 in.	13 in.
1/2 in.	57 in.	1-7/8 in.	14 in.
1 in.	57 in.	2-3/8 in.	14 in.
1 in.	57 in.	3-5/8 in.	14 in.



Qty: 1  
Oval, for 1-1/4 in. thick posts, 22 gauge, stainless steel.

No Fasteners	With Fasteners	Length
<a href="#">658-3009-3</a>	<a href="#">659-3009-3</a>	3 in.
<a href="#">658-3009-4</a>	<a href="#">656-3009-4</a>	4 in.
<a href="#">658-3009-5</a>	<a href="#">659-3009-5</a>	5 in.
<a href="#">658-3009-6</a>	<a href="#">659-3009-6</a>	6 in.
<a href="#">658-3009-7</a>	<a href="#">659-3009-7</a>	7 in.
<a href="#">658-3009-8</a>	<a href="#">659-3009-8</a>	8 in.
<a href="#">658-3009-9</a>	<a href="#">659-3009-9</a>	9 in.
<a href="#">658-3009-10</a>	<a href="#">659-3009-10</a>	10 in.
<a href="#">658-3009-12</a>	<a href="#">659-3009-12</a>	12 in.
<a href="#">658-3009-14</a>	—	14 in.
<a href="#">658-3009-18</a>	<a href="#">659-3009-18</a>	18 in.
<a href="#">658-3009-22</a>	<a href="#">659-3009-22</a>	22 in.



Qty: 1  
Open end, for 1-1/4 in. thick posts, 22 gauge, stainless steel.

[658-3001-4](#)



Qty: 1  
For 1 in. thick posts, 22 gauge, stainless steel.

[658-3004-4](#) (4 in. length)

[658-3004-5](#) (5 in. length)

[658-3004-6](#) (6 in. length)

[650-2900-10](#) (10 in. length)



Qty: 1  
Offset, for 3/4 in. thick posts, 22 gauge, stainless steel.

[658-3005-3](#) (3 in. length)

[658-3005-4](#) (4 in. length)

[658-3005-5](#) (5 in. length)

[658-3005-6](#) (6 in. length)

[658-3005-7](#) (7 in. length)

[658-3005-10](#) (10 in. length)

[658-3005-12](#) (12 in. length)



Qty: 1  
One ear, floor mounted, for 1/2 in. to 1-1/4 in. thick panels, stainless steel.  
[658-2004](#) (11-1/2 in. to 14 in. Floor clearance)



Qty: 1  
Two ear, floor mounted, for 1-1/4 in. thick panels, stainless steel.  
[650-9024-2](#) (7-1/2 in. to 10 in. Floor clearance)  
[658-9024](#) (11-1/2 in. to 14 in. Floor clearance)



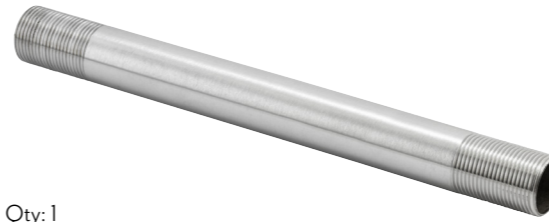
Qty: 1  
Base mount for pilaster supports, stainless steel.  
[658-2004-2](#) (Stainless steel)



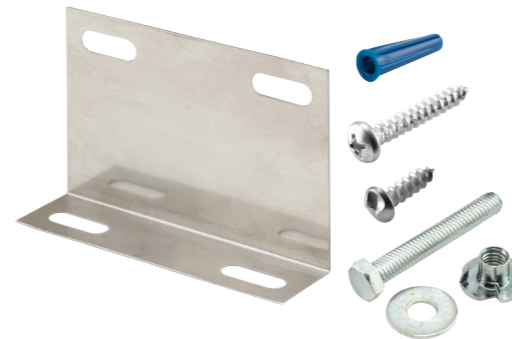
Qty: 1 set, with fasteners.  
Anchoring kit, for 3/4 in. thick and larger posts.  
[656-9408](#)



Qty: 1, with fasteners.  
1-1/4 in. Square, 2-1/2 in. hole spacing.  
[656-9297](#) (Chrome plated zamak)



Qty: 1  
Support shaft for pilaster supports, stainless steel.  
[658-2004-4](#) (For 9-1/2 in. to 12 in. Floor clearance)  
[659-2004](#) (For 12 in. to 14 in. Floor clearance)



Qty: 1 set, with fasteners.  
Anchoring kit, for any post thickness, 3 in. to 5 in. long posts require one kit, 6 in. to 17 in. long posts require two kits, 18 in. and longer posts require 3 kits.  
[658-9219](#)



Qty: 1, with fasteners.  
1-3/4 in. Square, 3 in. hole spacing.  
[656-6671](#) (Chrome plated zamak)



Qty: 1  
Anchoring fork.  
[656-2448](#)



Qty: 1  
For 1 in. x 1-7/8 in. rectangle pilaster post.  
[658-6689](#) (Chrome plated zamak)



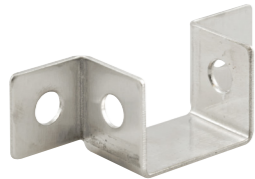
Qty: 1  
For 1-3/4 in. pilaster post.  
[658-7019](#)



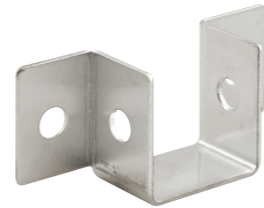
Qty: 1  
For "Anti-Grip" headrail.  
[658-6662](#) (Chrome plated zamak)



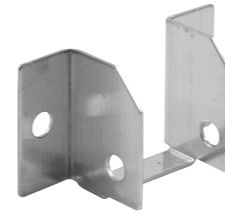
Qty: 1  
For headrail with curtain track, aluminum hook with plastic guide.  
[658-6647](#)



Qty: 1  
For 1 in. thick headrails, 1-31/32 in. hole spacing.  
[658-6675](#) (Stamped stainless steel)



Qty: 1  
For 1 in. thick headrails, 1-15/16 in. hole spacing.  
[658-6676](#) (Stamped stainless steel)



Qty: 1  
For headrails with tracks, stamped stainless steel.

[658-6672](#)

Rail Size	Opening Width	Hole Spacing	Width
3/4 in.	1-1/32 in.	1-7/8 in.	2-1/2 in.



Qty: 1, with fasteners.  
Chrome plated zamak.

[656-6473](#)

[656-6473-T](#)

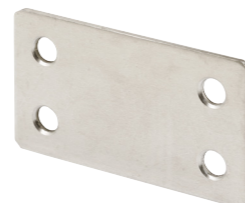
[656-8513](#)

Rail Size	Hole Spacing	Width
1 in.	2 in.	2-3/4 in.
1 in.	2 in.	2-3/4 in.
1-1/4 in.	2-3/8 in.	3-1/16 in.

(T-27 fasteners)



Qty: 1 set.  
Joins laminate panel to pilaster, 1/8 in. offset per clip, 1-1/2 in. hole spacing.  
[650-6656](#) (Chrome plated zamak, **no fasteners**)  
[656-6656](#) (Chrome plated zamak, **with fasteners**)  
[656-6656-T](#) (Chrome plated zamak, **with T-27 fasteners**)  
[656-4028](#) (Satin cast stainless steel, **with fasteners**)  
[656-4028-T](#) (Satin cast stainless steel, **with T-27 fasteners**)



Qty: 1  
Joins laminate panel to pilaster, flush clip, 1-7/8 in. hole spacing.  
[658-4034](#) (Stamped stainless steel)



Qty: 1  
Right angle curved molding, for 1 in. thick door and 1-1/4 in. thick post  
[658-6651](#) (Satin cast zamak – for Metpar, **no fasteners**)  
[656-6653](#) (Chrome plated zamak – for Flush Metal, **with fasteners**)

## Paper Roll Holders & Fasteners



Qty: 1, with fasteners.  
 Single roll dispenser, standard or 1800 sheet.  
[658-6710](#) (Chrome plated zamak)



Qty: 1, with fasteners.  
 Double roll dispenser, standard or 1800 sheet.  
[658-6713](#) (Chrome plated zamak)



Qty: 100  
 Flat head "Phillips", #10 x 1 in.  
[651-0487](#) (Chrome plated steel)



Qty: 100  
 Pan head "Phillips".

Chrome Plated Steel	Stainless Steel	Size
<a href="#">658-0488</a>	—	#12 x 1-1/2 in.
<a href="#">651-0361</a>	<a href="#">642-0418</a>	#14 x 5/8 in.
<a href="#">651-0490</a>	—	#14 x 1-1/2 in.
<a href="#">658-0491</a>	—	#14 x 1-3/4 in.



Qty: 100  
 T-20 flat head, six lobe with center pin, #10 x 1 in.  
[645-0140](#) (Chrome)      [642-0140](#) (Stainless steel)



Qty: 100  
 T-20 oval head, six lobe with center pin.

Chrome Plated Steel	Stainless Steel	Size
<a href="#">645-0148</a>	<a href="#">642-0148</a>	#8-32 x 1-1/8 in.
<a href="#">645-0149</a>	—	#8-32 x 1-3/8 in.

Chrome Plated Steel	Stainless Steel	Size
<a href="#">645-0119</a>	<a href="#">642-0119</a>	#10 x 5/8 in.
<a href="#">645-0128</a>	<a href="#">642-0128</a>	#10 x 3/4 in.
—	<a href="#">642-0121</a>	#12 x 7/16 in.
—	<a href="#">642-0122</a>	#14 x 1/2 in.
<a href="#">645-0129</a>	—	#14 x 5/8 in.
—	<a href="#">642-0130</a>	#14 x 3/4 in.
—	<a href="#">642-0125</a>	#14 x 1-1/2 in.
—	<a href="#">658-0131</a>	#14 x 1-3/4 in.
<a href="#">645-0132</a>	—	#14 x 2 in.
<a href="#">645-0134</a>	<a href="#">642-0134</a>	#14 x 2-1/2 in.

(Blunt tip)



Qty: 100  
 T-27 pan head, six lobe with center pin.



Qty: 100  
 T-27 pan head, six lobe with center pin, self cutting thread, 3/8 in. length.  
[642-0118](#) (Stainless steel)

Chrome Plated Steel	Stainless Steel	Size	Shoulder
—	<a href="#">642-0107</a>	#10-24 x 3/8 in.	None
—	<a href="#">642-0108</a>	#10-24 x 3/8 in.	1/8 in.
—	<a href="#">642-0110</a>	#10-24 x 1/2 in.	3/16 in.
<a href="#">645-0113</a>	<a href="#">642-0113</a>	#10-24 x 3/4 in.	3/16 in.
<a href="#">645-0116</a>	<a href="#">642-0116</a>	#10-24 x 15/16 in.	3/16 in.
—	<a href="#">642-0141</a>	#10-24 x 1-1/16 in.	1/4 in.
<a href="#">645-0142</a>	<a href="#">642-0142</a>	#10-24 x 1-3/16 in.	1/4 in.
<a href="#">645-0143</a>	—	#10-24 x 1-5/16 in.	1/4 in.



Qty: 100  
 T-27 shoulder, six lobe with center pin.



Qty: 100  
 T-27 barrel nut, six lobe with center pin, stainless steel.

Chrome Plated Steel	Stainless Steel	Size
<a href="#">645-0101</a>	<a href="#">642-0101</a>	#10-24 x 1/2 in.
<a href="#">645-0104</a>	<a href="#">642-0104</a>	#10-24 x 5/8 in.



One-way sheet metal screw.

- 642-0618** (#10 x 1/2 in., Stainless steel, Qty. 100)
- 658-0358** (#10 x 5/8 in., Stainless steel, Qty. 50)
- 651-0358** (#10 x 5/8 in., Chrome plated steel, Qty. 100)



Qty: 100  
Unslotted barrel nut.

Chrome Plated Steel	Stainless Steel	Size
<a href="#">651-0469</a>	<a href="#">642-0469</a>	#8-32 x 1/2 in.
<a href="#">651-0668</a>	<a href="#">642-0668</a>	#10-24 x 1/2 in.



Qty: 100  
One-way barrel nut.

Chrome Plated Steel	Stainless Steel	Size
<a href="#">651-0648</a>	<a href="#">642-0648</a>	#10-24 x 1/2 in.
<a href="#">651-0454</a>	<a href="#">642-0454</a>	#10-24 x 5/8 in.



Qty: 100  
One-way oval head machine screw.

Chrome Plated Steel	Stainless Steel	Size
<a href="#">651-0472</a>	<a href="#">642-0472</a>	#8-32 x 1-1/8 in.



Qty: 100  
One-way shoulder screw.

Chrome Plated Steel	Stainless Steel	Size	Shoulder
—	<a href="#">642-0651</a>	#10-24 x 1/2 in.	1/8 in.
<a href="#">651-0508</a>	<a href="#">642-0508</a>	#10-24 x 3/4 in.	1/4 in.
<a href="#">651-0463</a>	<a href="#">642-0463</a>	#10-24 x 15/16 in.	1/4 in.
<a href="#">651-0654</a>	<a href="#">642-0654</a>	#10-24 x 1-1/16 in.	1/4 in.



Qty: 100  
One-way shoulder screw.

Chrome Plated Steel	Stainless Steel	Size
<a href="#">651-0656</a>	<a href="#">642-0656</a>	#10-24 x 1-3/16 in.
<a href="#">651-0457</a>	—	#10-24 x 1-5/16 in.



Qty: 100 sets.  
#8-32 x 1-1/8 in. one-way oval head machine screw,  
#8-32 x 1/2 in. unslotted barrel nut.  
[651-0451](#) (Chrome plated steel)



Qty: 12 sets.  
Piano hinge screw pack containing:  
#10-24 x 3/4 in. T-27 shoulder, six lobe with center pin,  
#10-24 x 5/8 in. T-27 barrel nut, six lobe with center pin.  
[642-1005](#) (Chrome plated steel)



Qty: 100  
Plastic, #14-16 x 1-3/8 in.  
[651-0475](#) (Blue)

## Tools



Qty: 1 set.  
2-hole security screw remover & driver, multiple bits for use with screw sizes #4, #6, #8 and #10.

[\*\*650-7905\*\*](#)



Qty: 1  
Magnetic end, for use with all hex bits.

[\*\*658-4005\*\*](#)



Qty: 100  
T-20 TORX®, six lobe.

[\*\*658-4012\*\*](#)



Qty: 100  
T-25 TORX®, six lobe.

[\*\*650-4013\*\*](#)



Qty: 100  
T-27 TORX®, six lobe.

[\*\*650-4014\*\*](#)



Qty: 100  
T-30 TORX®, six lobe.

[\*\*658-4015\*\*](#)