

0914**For model: 0914**

Smoke Alarm User's Guide

9 Volt Battery Operated Smoke Alarm

Thank you for purchasing this smoke alarm. It is an important part of your family's home safety plan. You can trust this product to provide the highest quality safety protection. We know you expect nothing less when the lives of your family are at stake.

For your convenience, write down the following information. If you call our Consumer Hotline, these are the first questions you will be asked.

<i>Smoke Alarm Model Number (located on back of alarm):</i>	
<i>Date Code (located on back of alarm): The National Fire Protection Association (NFPA) and the manufacturer recommend replacing this alarm ten years from the date code.</i>	
<i>Date of Purchase:</i>	
<i>Where Purchased:</i>	

SIGNALING

820-0896 REV. B

11/2006

This alarm detects products of combustion using the ionization technique. It contains 0.9 microcurie of Americium 241, a radioactive material (see Section 9). Distributed under U.S. NRC License No. 32-23858-01E. Manufactured in compliance with U.S. NRC safety criteria in 10 CFR 32.27. The purchaser is exempt from any regulatory requirements. Do not try to repair the smoke alarm yourself. Refer to the instructions in Section 12 for service.

WARNING! BATTERY DOOR WILL NOT CLOSE UNLESS BOTH BATTERIES ARE PRESENT. REMOVAL OF ONE OR BOTH BATTERIES WILL RENDER THE SMOKE ALARM INOPERATIVE.

IMPORTANT! READ ALL INSTRUCTIONS BEFORE INSTALLATION AND KEEP THIS MANUAL NEAR THE ALARM FOR FUTURE REFERENCE.

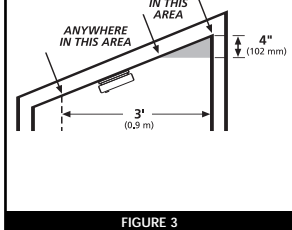
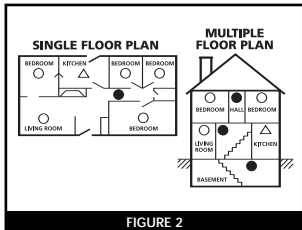
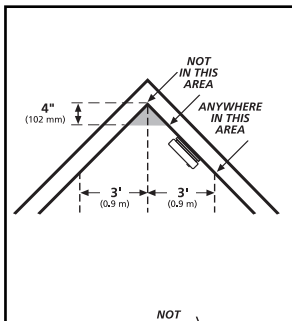
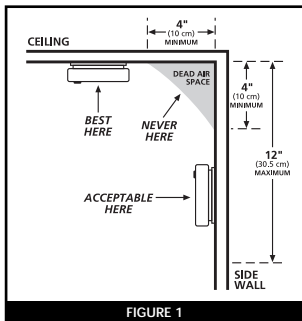
CONTENTS OF THIS MANUAL

- 1 -- RECOMMENDED LOCATIONS FOR SMOKE ALARMS**
- 2 -- LOCATIONS TO AVOID**
- 3 -- INSTALLATION INSTRUCTIONS**
- 4 -- OPERATION AND TESTING**
- 5 -- NUISANCE ALARMS**
- 6 -- MAINTENANCE**
- 7 -- LIMITATIONS OF SMOKE ALARMS**
- 8 -- GOOD SAFETY HABITS**
- 9 -- NRC INFORMATION**
- 10 -- NFPA PROTECTION STANDARD 72**
- 11 -- CALIFORNIA STATE FIRE MARSHAL REQUIRED INFORMATION**
- 12 -- SERVICE AND WARRANTY**

1. RECOMMENDED LOCATIONS FOR ALARMS

- Locate the first alarm in the immediate area of the bedrooms. Try to monitor the exit path as the bedrooms are usually farthest from the exit. If more than one sleeping area exists, locate additional alarms in each sleeping area.
- Locate additional alarms to monitor any stairway as stairways act like chimneys for smoke and heat.
- Locate at least one alarm on every floor level.
- Locate an alarm in every bedroom.

- Locate an alarm in every room where electrical appliances are operated (i.e. portable heaters or humidifiers).
- Locate an alarm in every room where someone sleeps with the door closed. The closed door may prevent an alarm not located in that room from waking the sleeper.
- Smoke, heat, and combustion products rise to the ceiling and spread horizontally. Mounting the smoke alarm on the ceiling in the center of the room places it closest to all points in the room. Ceiling mounting is preferred in ordinary residential construction.
- For mobile home installation, select locations carefully to avoid thermal barriers that may form at the ceiling. For more details, see MOBILE HOME INSTALLATION below.
- When mounting an alarm on the ceiling, locate it at a minimum of 4" (10cm) from the side wall (see figure 1).
- When mounting the alarm on the wall, use an inside wall with the top edge of the alarm at a minimum of 4" (10cm) and a maximum of 12" (30.5cm) below the ceiling (see figure 1).



- Put smoke alarms at both ends of a bedroom hallway or large room if the hallway or room is more than 30 ft (9.1 m) long.
- Install Smoke Alarms on sloped, peaked or cathedral ceilings at or within 3 ft (0.9m) of the highest point (measured horizontally). NFPA 72 states: "Smoke alarms in rooms with ceiling slopes greater than 1 ft in 8 ft (.3m in 2.4m) horizontally shall be located on the high side of the room." NFPA 72 states: "A row of alarms shall be spaced and located within 3 ft (0.9m) of the peak of the ceiling measured horizontally" (see figure 3).

MOBILE HOME INSTALLATION

Modern mobile homes have been designed and built to be energy efficient. Install smoke alarms as recommended above (refer to RECOMMENDED LOCATIONS and figures 1 and 2).

In older mobile homes that are not well insulated compared to present standards, extreme heat or cold can be transferred from the outside to the inside through poorly insulated walls and roof. This may create a thermal barrier which can prevent the smoke from reaching an alarm mounted on the ceiling. In such units, install the smoke alarm on an inside wall with the top edge of the alarm at a minimum of 4" (10 cm) and a maximum of 12" (30.5 cm) below the ceiling (see figure 1).

If you are not sure about the insulation in your mobile home, or if you notice that the outer walls and ceiling are either hot or cold, install the alarm on an inside wall. For minimum protection, install at least one alarm close to the bedrooms. For additional protection, see SINGLE FLOOR PLAN in figure 2.

WARNING: TEST YOUR SMOKE ALARM OPERATION AFTER RV OR MOBILE HOME VEHICLE HAS BEEN IN STORAGE, BEFORE EACH TRIP AND AT LEAST ONCE A WEEK DURING USE.

2. LOCATIONS TO AVOID

- In the garage. Products of combustion are present when you start your automobile.
- Less than 4" (10cm) from the peak of an "A" frame type ceiling.
- In an area where the temperature may fall below 40°F or rise above 100°F, such as garages and unfinished attics.
- In dusty areas. Dust particles may cause nuisance alarm or failure to alarm.

- In very humid areas. Moisture or steam can cause nuisance alarms.
- In insect-infested areas.
- Smoke alarms should not be installed within 3 ft (.9m) of the following: the door to a kitchen, the door to a bathroom containing a tub or shower, forced air supply ducts used for heating or cooling, ceiling or whole house ventilating fans, or other high air flow areas.
- Kitchens. Normal cooking may cause nuisance alarms. If a kitchen alarm is desired, it should have an alarm silence feature or be a photoelectric type.
- Near fluorescent lights. Electronic "noise" may cause nuisance alarms.
- Smoke alarms are not to be used with detector guards unless the combination (alarm and guard) have been evaluated and found suitable for that purpose.

3. INSTALLATION INSTRUCTIONS

CAUTION: THIS UNIT IS SEALED. THE COVER IS NOT REMOVABLE!

When mounting in a hallway, the "A" line should be parallel with the hallway.

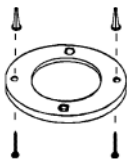


FIGURE 4

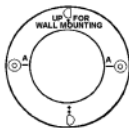


FIGURE 5

When wall mounting, the "A" line should be horizontal and the "UP FOR WALL MOUNTING" arrow must be pointing up.

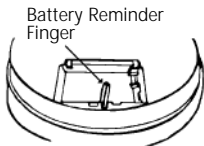


FIGURE 6

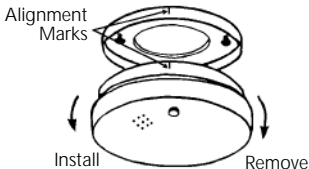


FIGURE 7

1. Remove the mounting plate from the back of the alarm by holding the mounting plate and twisting the alarm in the direction indicated by the "OFF" arrow on the alarm cover.
2. To insure aesthetic alignment of the alarm with the hallway or wall, the "A" line on the mounting plate should be parallel with the hallway when ceiling mounting or horizontal when wall mounting.
3. After selecting the proper smoke alarm location as described in Section 1, attach the mounting plate to the ceiling as shown in figure 4. For wall mounting see figure 5. Place mounting plate on the wall. Be sure the "UP FOR WALL MOUNTING" text and arrow are facing up. Use the screws and anchors provided to secure the mounting plate (use 3/16" drill bit for anchor holes).
4. Battery installation instructions are provided on the inside of the battery compartment. To ensure proper installation of the smoke alarm battery, follow the instructions.
5. When installing the battery, press the battery reminder finger down into the battery compartment and install the battery (see figure 6).

CAUTION! IF THE BATTERY REMINDER FINGER IS NOT HELD DOWN IN THE BATTERY COMPARTMENT BY THE BATTERY, THE BATTERY DOOR WILL NOT CLOSE AND THE UNIT WILL NOT ATTACH TO THE MOUNTING BRACKET.

6. Alignment marks are provided on the edge of the trim plate and the alarm. After installing the mounting plate, place the alarm on the mounting plate with the alignment marks lined up. Twist the alarm in the direction indicated by the "ON" arrow on the alarm cover (see figure 7) until it locks in place.
7. After installation, test your alarm by depressing and holding down the test button for at least 5 seconds. This should sound the alarm.

4. OPERATION AND TESTING

OPERATION: The smoke alarm is operating once a fresh battery is installed and testing is complete. When products of combustion are sensed, the unit sounds a loud 85db pulsating alarm until the air is cleared.

FLASHING LED LIGHT: This smoke alarm is equipped with a flashing red indicator light. The light is located under the test button

and will flash every 30 - 40 seconds to indicate that the smoke alarm is receiving power.

TESTING: Test by pushing the test button on the cover and holding it down for a minimum of 5 seconds. This will sound the alarm if the electronic circuitry, horn, and battery are working. If no alarm sounds, the unit has defective batteries or other failure. **DO NOT** use an open flame to test your alarm, you could damage the alarm or ignite combustible materials and start a structure fire.

TEST THE ALARM WEEKLY TO ENSURE PROPER OPERATION. Erratic or low sound coming from your alarm may indicate a defective alarm, and it should be returned for service (see section 12).

NOTE: WEEKLY TESTING IS REQUIRED.

5. NUISANCE ALARMS

Smoke alarms are designed to minimize nuisance alarms. Cigarette smoke will not normally set off the alarm, unless the smoke is blown directly into the alarm. Combustion particles from cooking may set off the alarm if the alarm is located close to the cooking area. Large quantities of combustible particles are generated from spills or when broiling. Using the fan on a range hood which vents to the outside (non-recirculating type) will also help remove these combustible products from the kitchen.

If the alarm does sound, check for fires first. If a fire is discovered, get out and call the fire department. If no fire is present, check to see if one of the reasons listed in section 2 may have caused the alarm.

6. MAINTENANCE

BATTERY REPLACEMENT

To replace the battery, remove the alarm from the mounting plate by rotating the alarm in the direction of the "OFF" arrow on the cover (see figure 7).

The Model 0914 Smoke Alarm is powered by a 9V carbon zinc battery (alkaline and lithium batteries may also be used). A fresh battery should last for one year under normal operating conditions. This alarm has a low battery monitor circuit which will cause the alarm to "chirp" approximately every 30 - 40 seconds for a minimum of seven (7) days when the battery gets low. Replace the battery when this condition occurs.

USE ONLY THE FOLLOWING 9 VOLT BATTERIES FOR SMOKE ALARM BATTERY REPLACEMENT.

Carbon-zinc type	EVEREADY 216 OR 1222; GOLD PEAK 1604P OR 1604S
Alkaline type	ENERGIZER 522; DURACELL MN1604, MX1604; GOLD PEAK 1604A; PANASONIC 6AM6, 6AM-6, 6AM-6PI, 6AM6X, AND 6LR61 (GA)
Lithium type	ULTRALIFE U9VL-J

NOTE: WEEKLY TESTING IS REQUIRED.

WARNING!! USE ONLY THE BATTERIES SPECIFIED. USE OF DIFFERENT BATTERIES MAY HAVE A DETRIMENTAL EFFECT ON THE SMOKE ALARM.

CLEANING YOUR ALARM

YOUR ALARM SHOULD BE CLEANED AT LEAST ONCE A YEAR

To clean your alarm, remove it from the mounting bracket as outlined in the beginning of this section. You can clean the interior of your alarm (sensing chamber) by using compressed air or a vacuum cleaner hose and blowing or vacuuming through the openings around the perimeter of the alarm. The outside of the alarm can be wiped with a damp cloth. After cleaning, reinstall your alarm and test your alarm by using the test button. If cleaning does not restore the alarm to normal operation the alarm should be replaced.

7. LIMITATIONS OF SMOKE ALARMS

WARNING: PLEASE READ CAREFULLY AND THOROUGHLY

- NFPA 72 states: Life safety from fire in residential occupancies is based primarily on early notification to occupants of the need to escape, followed by the appropriate egress actions by those occupants. Fire warning systems for dwelling units are capable of protecting about half of the occupants in potentially fatal fires. Victims are often intimate with the fire, too old or young, or physically or mentally impaired such that they cannot escape even when warned early enough that escape should be possible. For these people, other strategies such as protection-in-place or assisted escape or rescue are necessary.

- Smoke alarms are devices that can provide early warning of possible fires at a reasonable cost; however, alarms have sensing limitations. Ionization sensing alarms may detect invisible fire particles (associated with fast flaming fires) sooner than photoelectric alarms. Photoelectric sensing alarms may detect visible fire particles (associated with slow smoldering fires) sooner than ionization alarms. Home fires develop in different ways and are often unpredictable. For maximum protection, Kidde recommends that both Ionization and Photoelectric alarms be installed.
- A battery powered alarm must have a battery of the specified type, in good condition and installed properly.
- AC powered alarms (without battery backup) will not operate if the AC power has been cut off, such as by an electrical fire or an open fuse.
- Smoke alarms must be tested regularly to make sure the batteries and the alarm circuits are in good operating condition.
- Smoke alarms cannot provide an alarm if smoke does not reach the alarm. Therefore, smoke alarms may not sense fires starting in chimneys, walls, on roofs, on the other side of a closed door or on a different floor.
- If the alarm is located outside the bedroom or on a different floor, it may not wake up a sound sleeper.
- The use of alcohol or drugs may also impair one's ability to hear the smoke alarm. For maximum protection, a smoke alarm should be installed in each sleeping area on every level of a home.
- Although smoke alarms can help save lives by providing an early warning of a fire, they are not a substitute for an insurance policy. Home owners and renters should have adequate insurance to protect their lives and property.

8. GOOD SAFETY HABITS

DEVELOP AND PRACTICE A PLAN OF ESCAPE

- Make a floor plan indicating all doors and windows and at least two (2) escape routes from each room. Second story windows may need a rope or chain ladder.
- Have a family meeting and discuss your escape plan, showing everyone what to do in case of fire.

- Determine a place outside your home where you all can meet if a fire occurs.
- Familiarize everyone with the sound of the smoke alarm and train them to leave your home when they hear it.
- Practice a fire drill at least every six months, including fire drills at night. Ensure that small children hear the alarm and wake when it sounds. They must wake up in order to execute the escape plan. Practice allows all occupants to test your plan before an emergency. You may not be able to reach your children. It is important they know what to do.
- Install and maintain fire extinguishers on every level of the home and in the kitchen, basement and garage. Know how to use a fire extinguisher prior to an emergency.
- Current studies have shown smoke alarms may not awaken all sleeping individuals, and that it is the responsibility of individuals in the household that are capable of assisting others to provide assistance to those who may not be awakened by the alarm sound, or to those who may be incapable of safely evacuating the area unassisted.

WHAT TO DO WHEN THE ALARM SOUNDS

- Alert small children in the home.
- Leave immediately by your escape plan. Every second counts, so don't waste time getting dressed or picking up valuables.
- In leaving, don't open any inside door without first feeling its surface. If hot, or if you see smoke seeping through cracks, don't open that door! Instead, use your alternate exit. If the inside of the door is cool, place your shoulder against it, open it slightly and be ready to slam it shut if heat and smoke rush in.
- Stay close to the floor if the air is smoky. Breathe shallowly through a cloth, wet if possible.
- Once outside, go to your selected meeting place and make sure everyone is there.
- Call the fire department from your neighbor's home - not from yours!
- Don't return to your home until the fire officials say that it is all right to do so.

There are situations where a smoke alarm may not be effective to protect against fire as stated in the NFPA Standard 72. For instance:

- a) smoking in bed
- b) leaving children home alone
- c) cleaning with flammable liquids, such as gasoline

9. NRC INFORMATION

Ionization type smoke alarms use a very small amount of a radioactive element in the sensing chamber to enable detection of visible and invisible combustion products. The radioactive element is safely contained in the chamber and requires no adjustments or maintenance. This smoke alarm meets or exceeds all government standards. It is manufactured and distributed under license from the U.S. Nuclear Regulatory Commission.

10. NFPA REQUIRED PROTECTION

The National Fire Protection Association's Standard 72 provides the following information:

Smoke Detection - Where required by applicable laws, codes, or standards for the specified occupancy, approved single- and multiple-station smoke alarms shall be installed as follows: (1) In all sleeping rooms Exception: Smoke alarms shall not be required in sleeping rooms in existing one- and two-family dwelling units. (2) Outside of each separate sleeping area, in immediate vicinity of the sleeping rooms. (3) On each level of the dwelling unit, including basements Exception: In existing one- and two-family dwelling units, approved smoke alarms powered by batteries are permitted.

Smoke Detection - Are More Smoke Alarms Desirable? The required number of smoke alarms might not provide reliable early warning protection for those areas separated by a door from the areas protected by the required smoke alarms. For this reason, it is recommended that the householder consider the use of additional smoke alarms for those areas for increased protection. The additional areas include the basement, bedrooms, dining room, furnace room, utility room, and hallways not protected by the required smoke alarms. The installation of the smoke alarms in the kitchen, attic (finished or unfinished), or garage is normally not recommended, as these locations occasionally experience conditions that can result in improper operation.

This equipment should be installed in accordance with the National Fire Protection Association's Standard 72 (NFPA, Batterymarch Park, Quincy, MA 02269).

NOTIFY YOUR LOCAL FIRE DEPARTMENT AND INSURANCE COMPANY OF YOUR SMOKE ALARM INSTALLATION.

11. CAUTION (AS REQUIRED BY THE CALIFORNIA STATE FIRE MARSHAL)

"Early warning fire detection is best achieved by the installation of fire detection equipment in all rooms and areas of the household as follows: A smoke alarm installed in each separate sleeping area (in the vicinity of, but outside of the bedrooms), and heat or smoke detectors in the living rooms, dining rooms, bedrooms, kitchens, hallways, attics, furnace rooms, closets, utility and storage rooms, basements and attached garages".

12. SERVICE AND WARRANTY

If after reviewing this manual you feel that your smoke alarm is defective in any way, do not tamper with the unit. Return it for servicing to: KIDDE Safety, 1016 Corporate Park Dr., Mebane, NC 27302. 800-880-6788 (See Warranty for in-warranty returns).

FIVE YEAR LIMITED WARRANTY

KIDDE Safety warrants to the original purchaser that the enclosed smoke alarm (but not the battery) will be free from defects in material and workmanship or design under normal use and service for a period of three years from the date of purchase. The obligation of KIDDE Safety under this warranty is limited to repairing or replacing the smoke alarm or any part which we find to be defective in material, workmanship or design, free of charge to the customer, upon sending the smoke alarm with proof of date of purchase, postage and return postage pre-paid, to Warranty Service Department, KIDDE Safety, 1016 Corporate Park Dr., Mebane, NC 27302.

This warranty shall not apply to the smoke alarm if it has been damaged, modified, abused or altered after the date of purchase or if it fails to operate due to improper maintenance or inadequate AC or DC electrical power.

THE LIABILITY OF KIDDE SAFETY OR ANY OF ITS PARENT OR SUBSIDIARY CORPORATIONS ARISING FROM THE SALE OF THIS SMOKE ALARM OR UNDER THE TERMS OF THIS LIMITED WARRANTY SHALL NOT IN ANY CASE EXCEED THE COST OF REPLACEMENT OF SMOKE ALARM AND, IN NO CASE, SHALL KIDDE SAFETY OR ANY OF ITS PARENT OR SUBSIDIARY CORPORATIONS BE LIABLE FOR CONSEQUENTIAL LOSS OR DAMAGES RESULTING FROM THE FAILURE OF THE SMOKE ALARM OR FOR BREACH OF THIS OR ANY OTHER WARRANTY, EXPRESS OR IMPLIED, EVEN IF THE LOSS OR DAMAGE IS CAUSED BY THE COMPANY'S NEGLIGENCE OR FAULT.

Since some states do not allow limitations on the duration of an implied warranty or do not allow the exclusion or limitation of incidental or consequential damages, the above limitations or exclusions may not apply to you. While this warranty gives you specific legal rights, you may also have other rights which vary from state to state.

Also, KIDDE Safety makes no warranty, express or implied, written or oral, including that of merchantability or fitness for any particular purpose, with respect to the battery.

The above warranty may not be altered except in writing signed by both parties hereto.

QUESTIONS OR FOR MORE INFORMATION

Call our Consumer Hotline at **1-800-880-6788** or contact us at our website at **www.kidde.com**



Kidde, 1016 Corporate Park Drive, Mebane, NC 27302