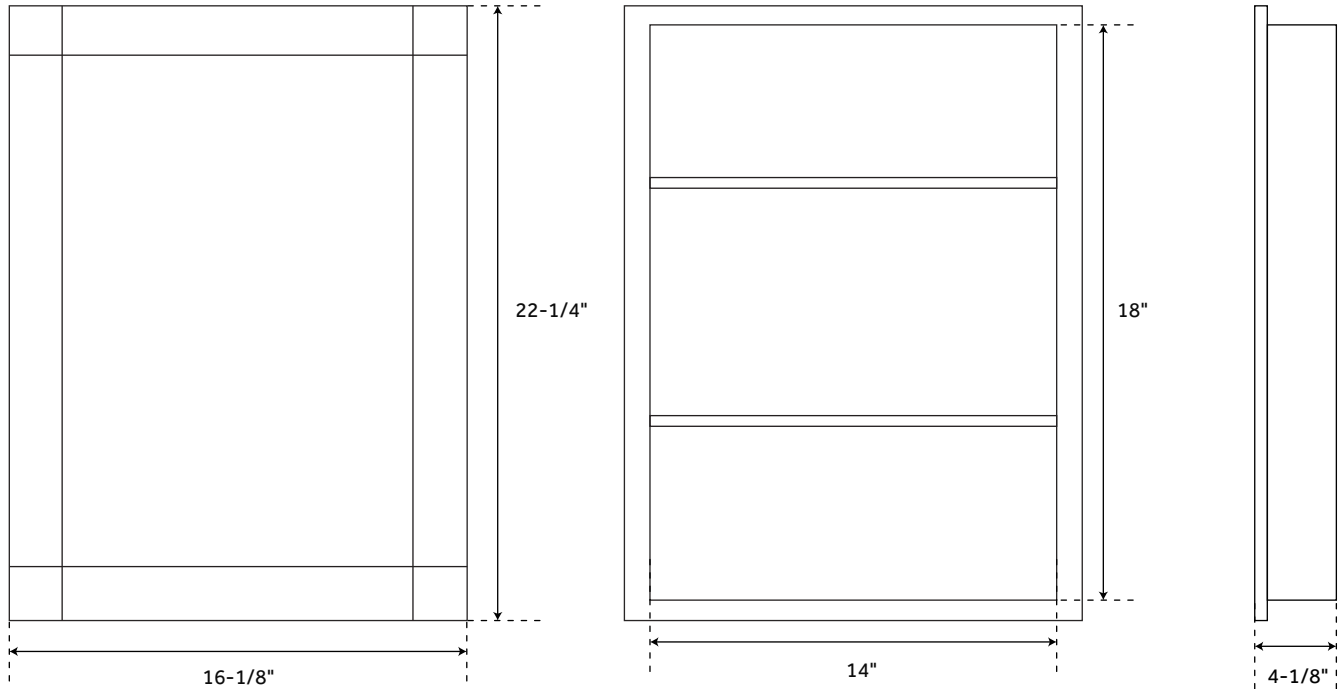


# GROOVE

## STEEL MEDICINE CABINET WITH BEVELED GLASS - RECESS MOUNT

SKU: 911153



### FEATURES

Features: Frameless, Mirrored  
Material: Steel  
Design: Traditional  
Mirror Shape: Rectangle  
Number of Doors: 1  
Width: 16-1/8"  
Height: 22-1/4"  
Depth: 4-1/8"  
Assembly Required: No  
Door Opens: Reversible  
Number of Shelves: 2  
Adjustable Shelves: Yes  
Recess mount requires rough opening of:  
14" L x 3" W (front to back) x 18" H ( $\pm 1/2"$ )  
Storage Depth: 3-1/2"  
Includes two adjustable glass shelves  
Reversible door for left- or right-hand opening

### SIGNATURE HARDWARE LIFETIME WARRANTY

See website for warranty information



All dimensions and specifications are nominal and may vary. Use actual products for accuracy in critical situations.

REVISED 08/28/2019