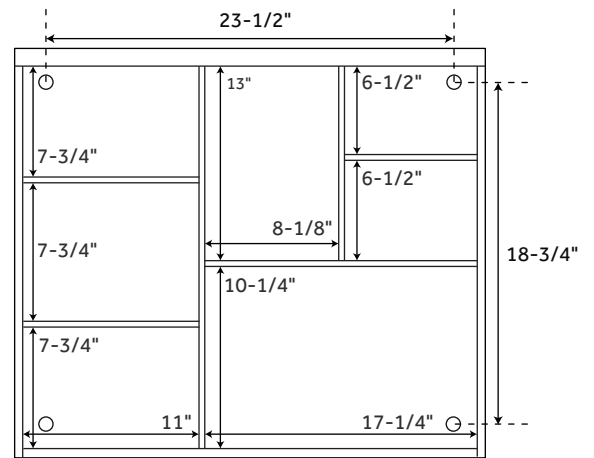
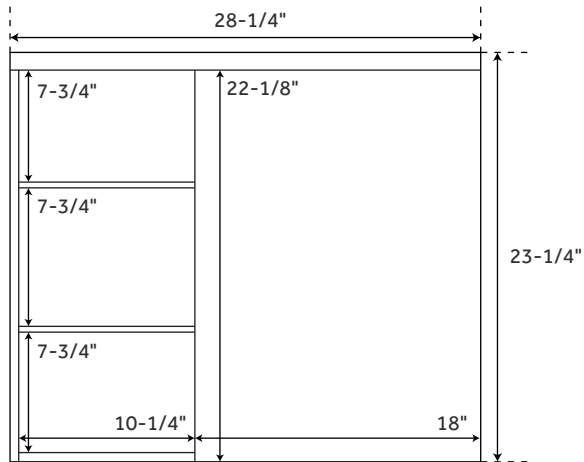


CASCARA

STAINLESS STEEL MEDICINE CABINET - POLISHED STAINLESS STEEL

SKU: 922644



FEATURES

Features: Framed, Mirrored
Material: Stainless Steel
Design: Modern
Mirror Shape: Rectangle
Number of Doors: 1
Width: 28-1/4"
Height: 23-1/4"
Depth: 5-1/4"
Assembly Required: No
Mirror Only Width: 18"
Mirror Only Height: 22-1/8"
Door Opens: Right-hand
Number of Shelves: 4
Adjustable Shelves: No
Made of 304-grade stainless steel

SIGNATURE HARDWARE LIFETIME WARRANTY

See website for warranty information



All dimensions and specifications are nominal and may vary. Use actual products for accuracy in critical situations.

REVISED 08/26/2019