



CALHOUN SHOWER SYSTEM

INSTALLATION INSTRUCTIONS

Before you begin, review the instructions below carefully. Observe all local plumbing and building codes when installing the shower enclosure.

Unpack and inspect the shower enclosure and parts for damage. If damage is found, please call customer service at 1-866-855-2284. If you need assistance while installing your shower enclosure, contact customer service.

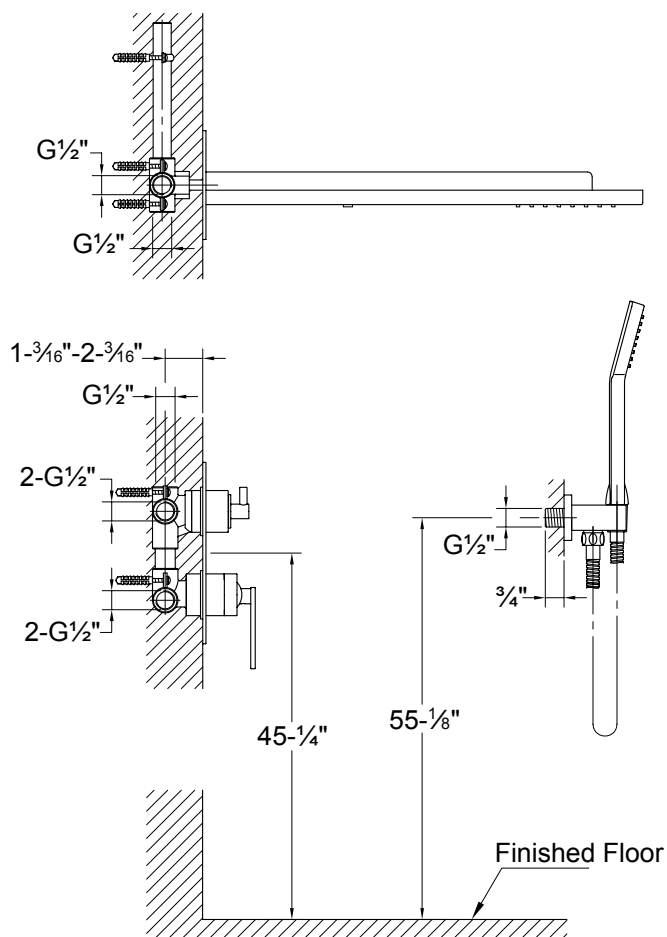
Special care should be taken when drilling walls to avoid hidden pipes or electrical cables. Signature Hardware accepts no liability for any damage to floor, walls, plumbing, etc., or for personal injury during installation. We recommend consulting a professional if you are unfamiliar with installing bathroom fixtures and plumbing.

TOOLS AND MATERIALS:

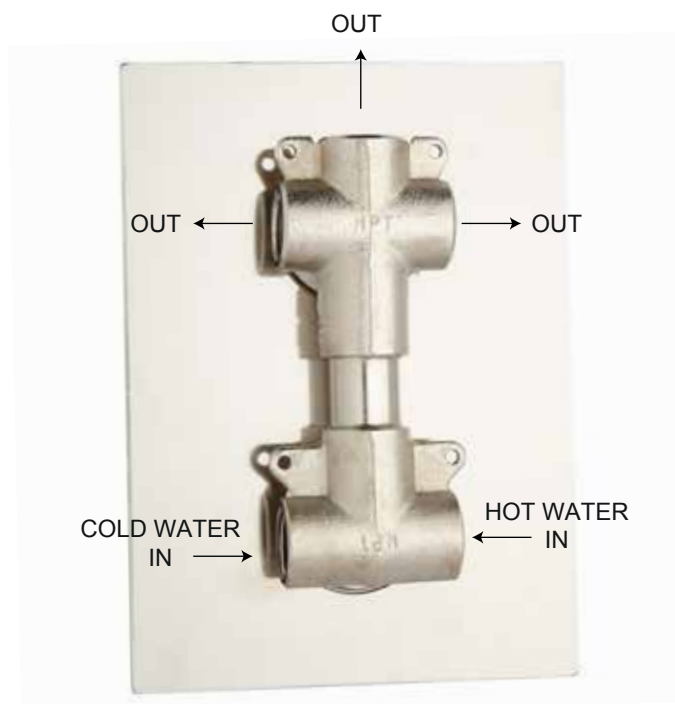
Teflon Tape
Pencil

Screwdriver
Level

Drill
Tape Measure



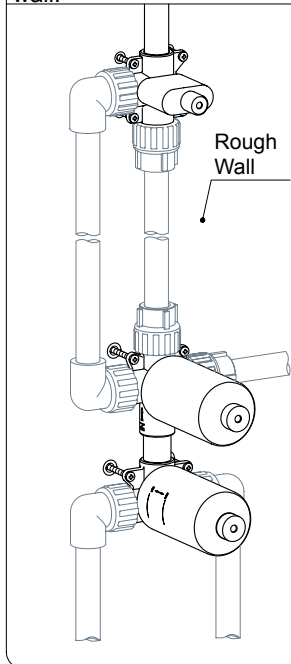
VALVE & DIVERTER BACK



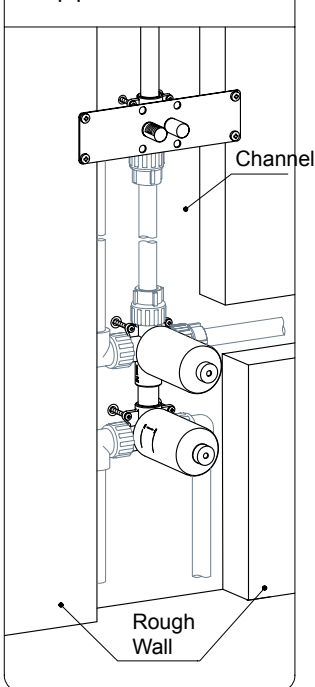


1. Select the appropriate installation type for your application.

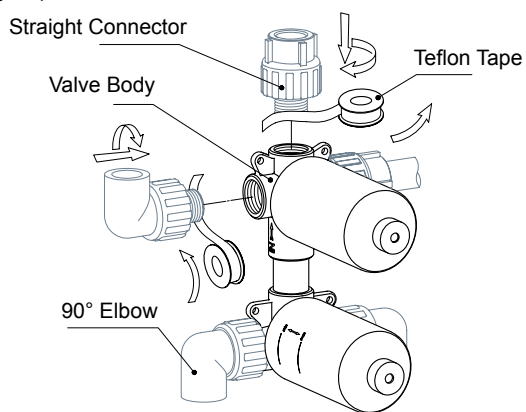
For stud walls, install the valve body between the studs behind the finished wall.



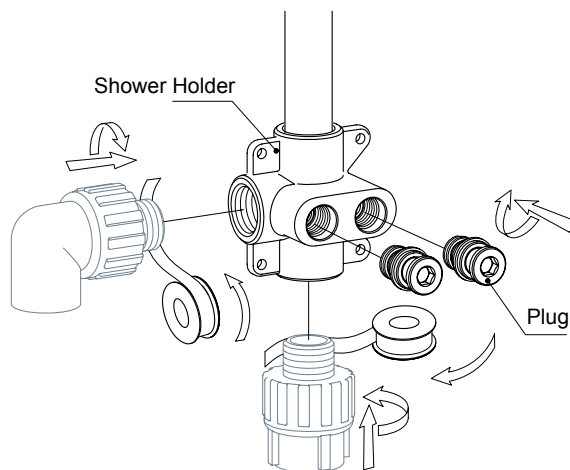
For masonry walls, create a channel for valve body and pipe installation.



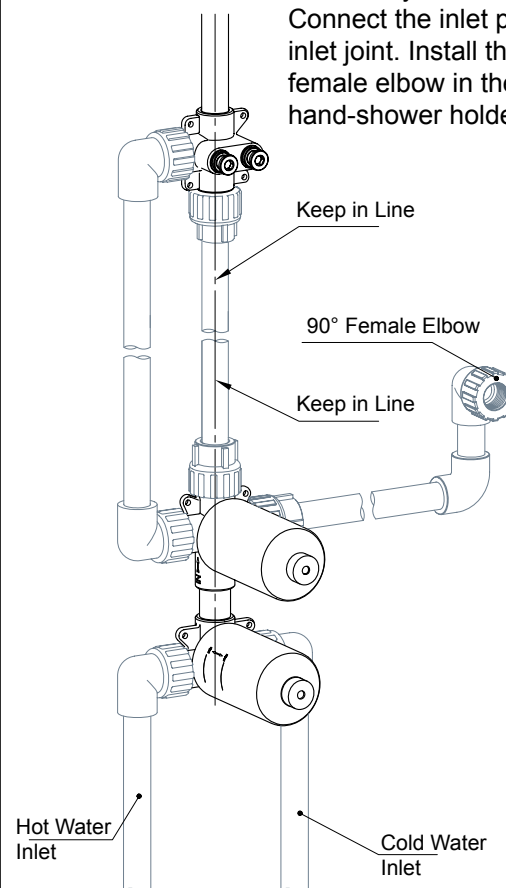
2. For stud wall installation, wrap Teflon tape around the threaded connections and attach to the valve body. For masonry wall installation, move on to step 24 (page 9).



3. Wrap Teflon tape around the threaded portion of the plugs and attach to the shower holder.

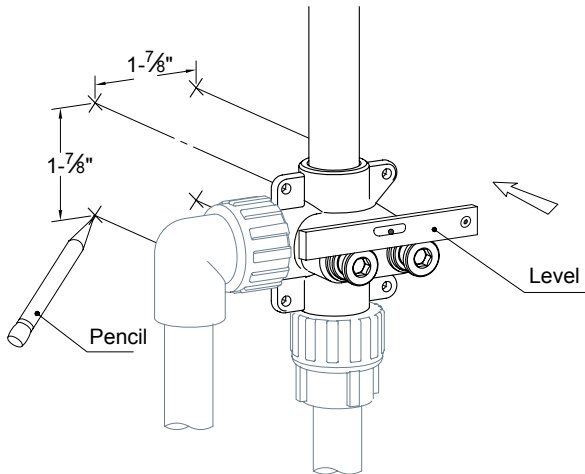


4. Determine the locations of the valve body and shower head. Connect the inlet pipe to the inlet joint. Install the 90° female elbow in the hand-shower holder location.



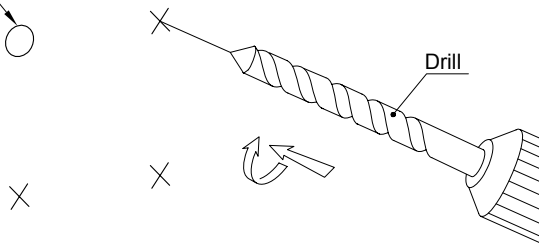


5. Mark the location of the mounting holes on the shower holder in the installation location. Use a level to ensure the holder is aligned properly.

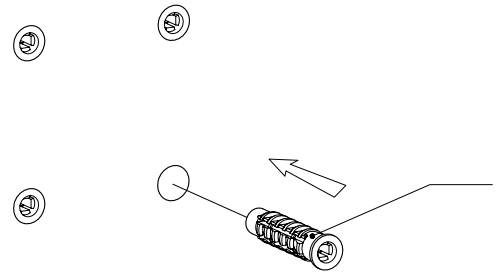


6. Drill mounting holes with the appropriate drill bit.

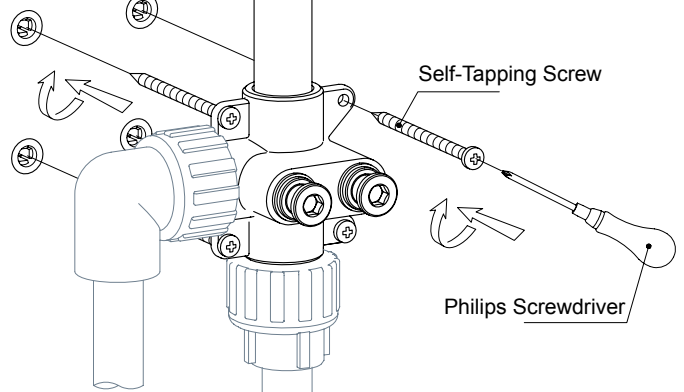
4-Ø8 Holes



7. Insert wall anchors into the holes drilled in the previous step.

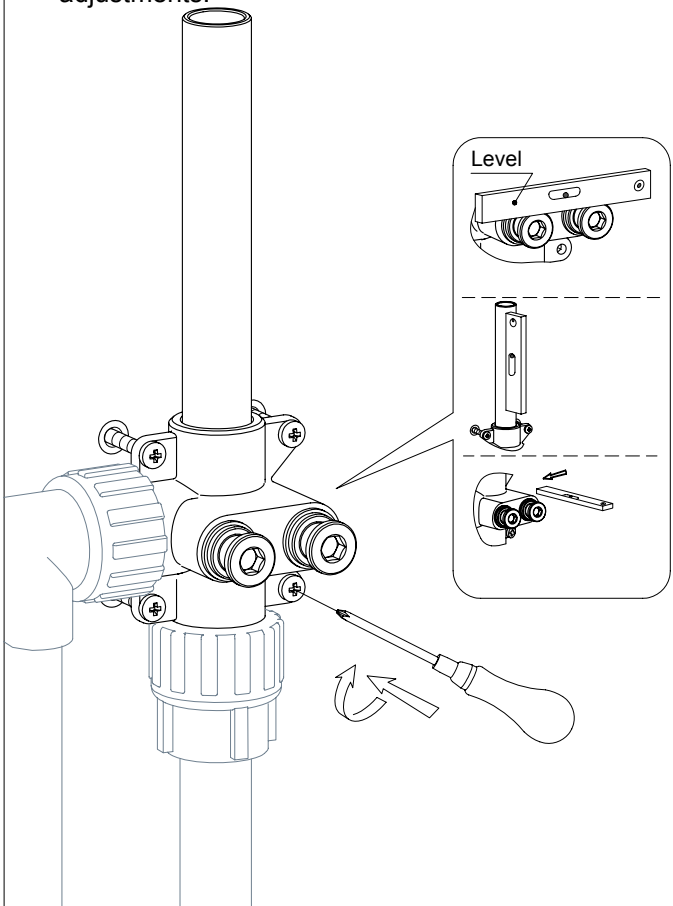


8. Loosely attach the shower holder to the wall with self-tapping screws.

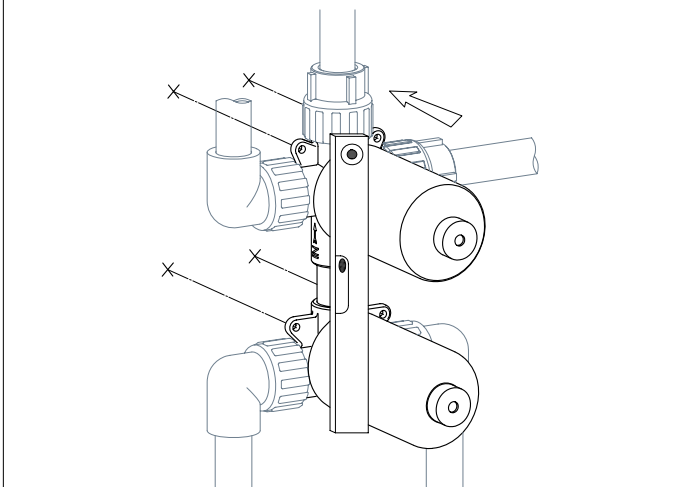




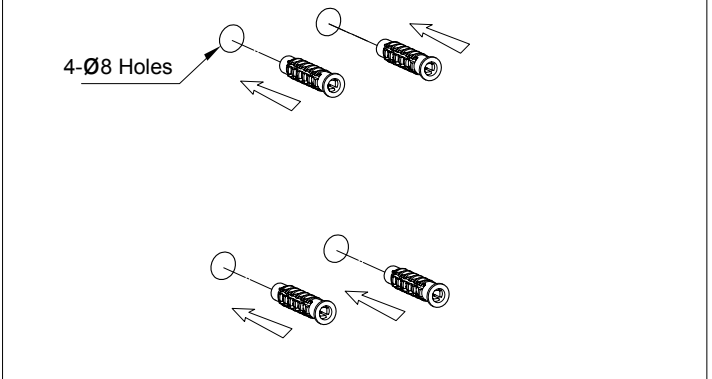
9. Tighten the self-tapping screws after making adjustments.



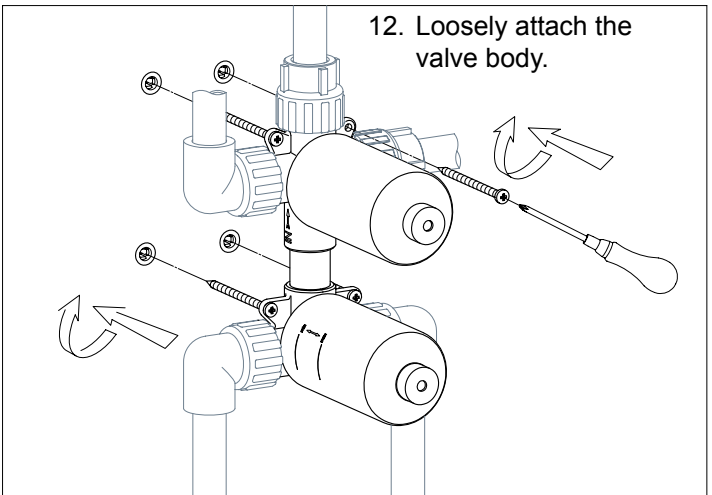
10. Mark the location of the mounting holes on the valve body in the installation location. Use a level to ensure the holder is aligned properly.



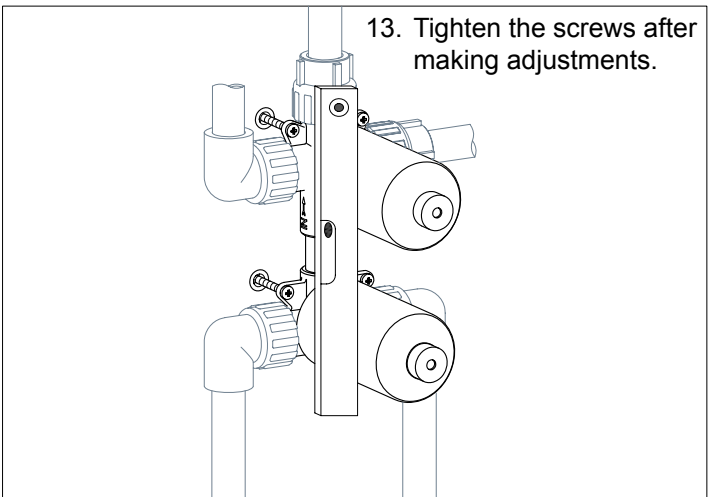
11. Drill mounting holes with the appropriate drill bit and insert the wall anchors.



12. Loosely attach the valve body.

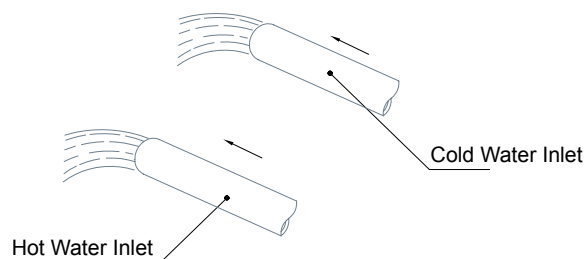


13. Tighten the screws after making adjustments.

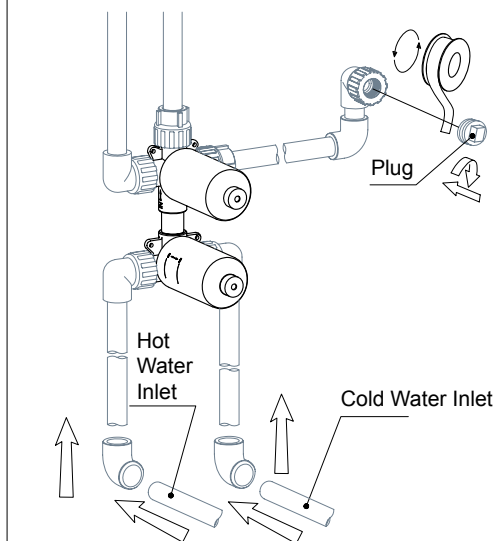




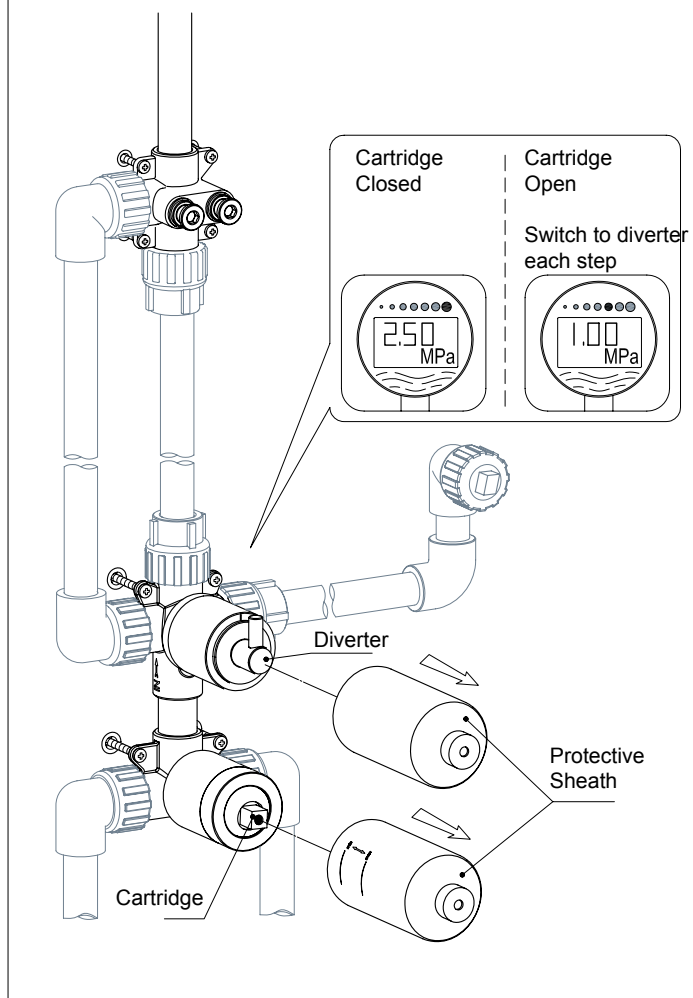
14. Turn the water on to flow water through the pipes to clear out any dirt and debris.



15. Connect the inlet pipes. Wrap Teflon tape around the threaded portion of the plug. Insert the plug into the 90° female elbow.

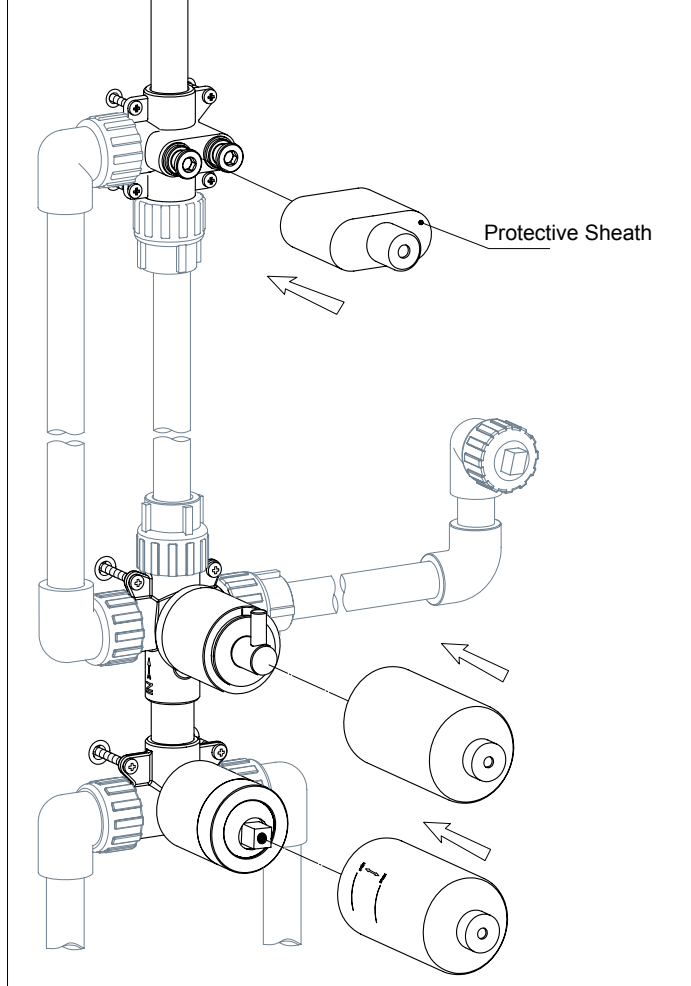


16. Remove the protective sheath, and run water to test the pressure and ensure there are no leaks.

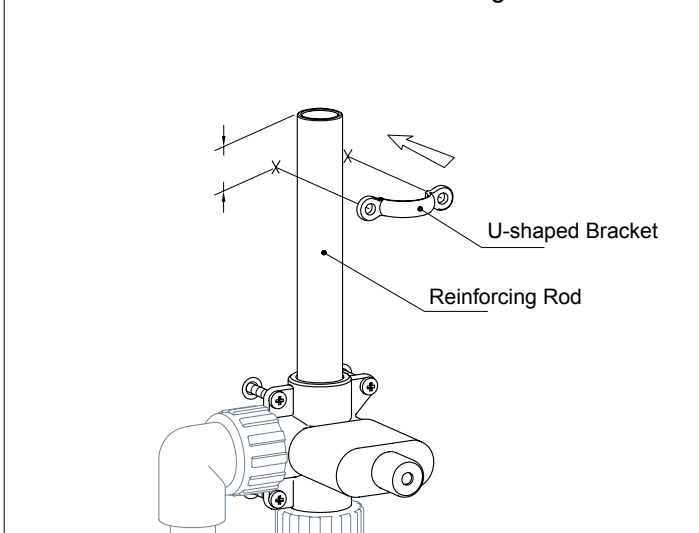




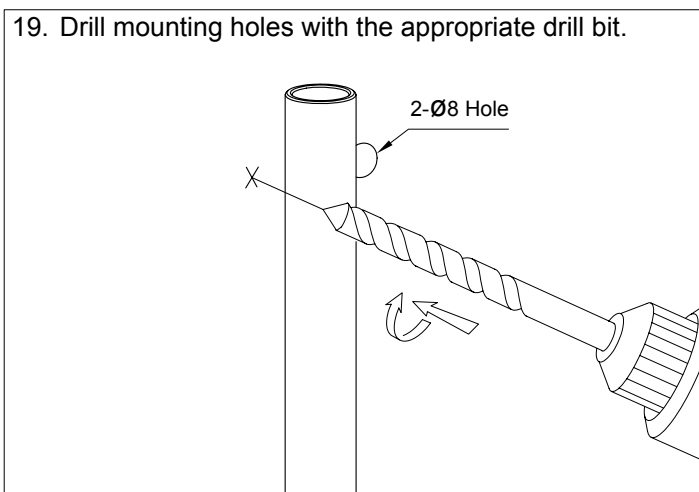
17. Place the protective sheath back on the valve body and shower holder.



18. Place the u-shaped bracket on the reinforcing rod and mark the location of the mounting holes.

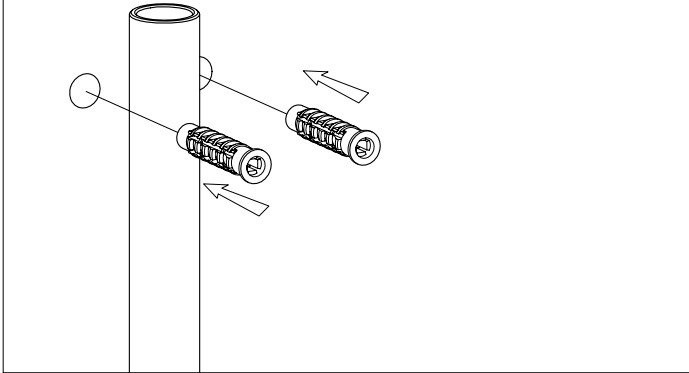


19. Drill mounting holes with the appropriate drill bit.

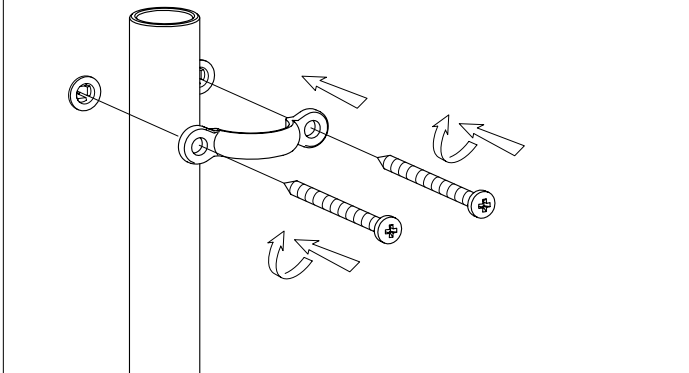




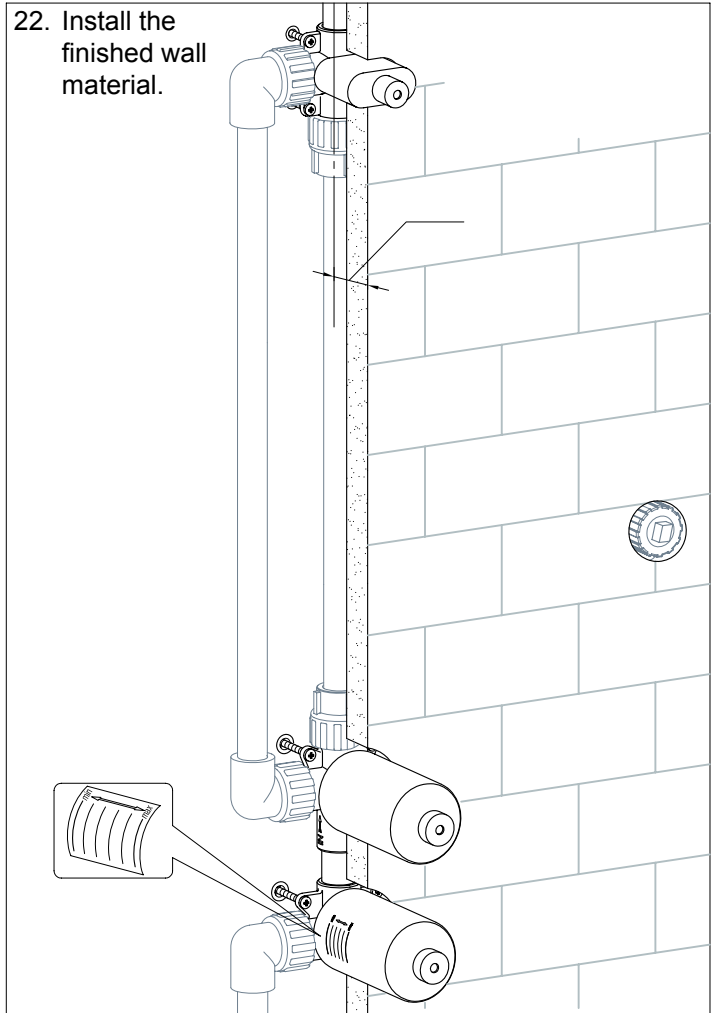
20. Insert anchors into the holes drilled in the previous step.



21. Attach the bracket to the wall with self-tapping screws.

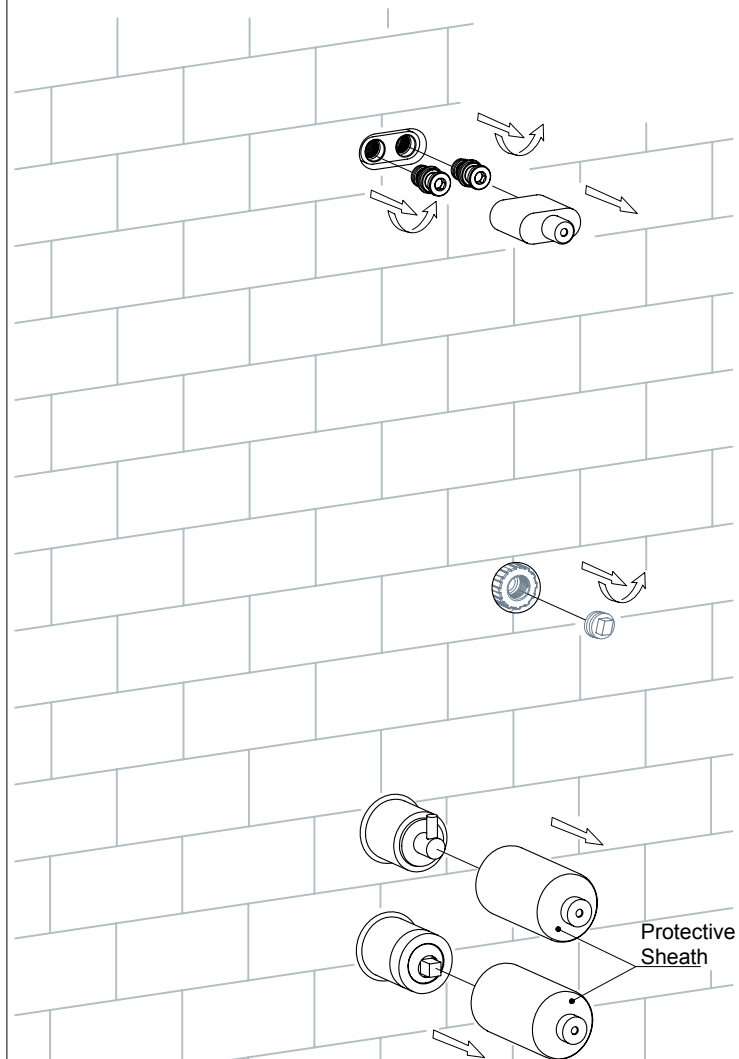


22. Install the finished wall material.



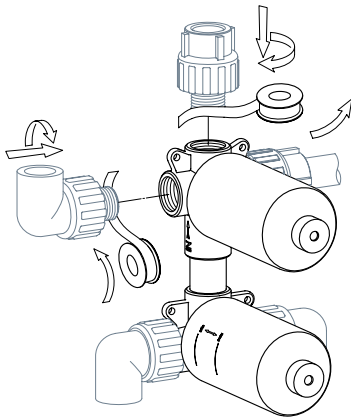


23. Remove the protective sheath and unscrew the plugs. Move on to step 44 (page 14).

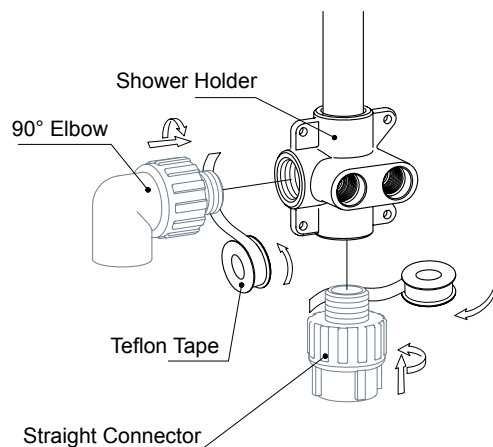




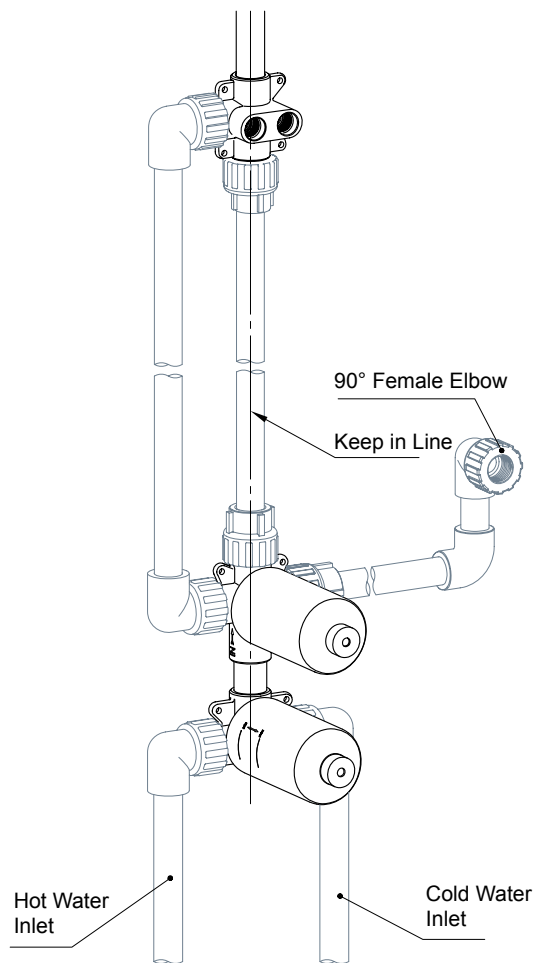
24. For masonry wall installation, wrap Teflon tape around the threaded connections and attach to the valve body.



25. Wrap Teflon tape around the threaded connections and attach to the shower holder.

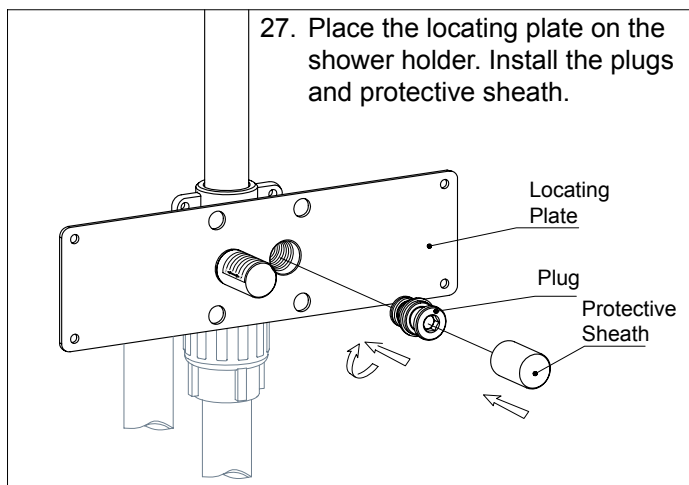


26. Determine the locations of the valve body and shower head. Connect the inlet pipe to the inlet joint. Install the 90° female elbow in the hand-shower holder location.

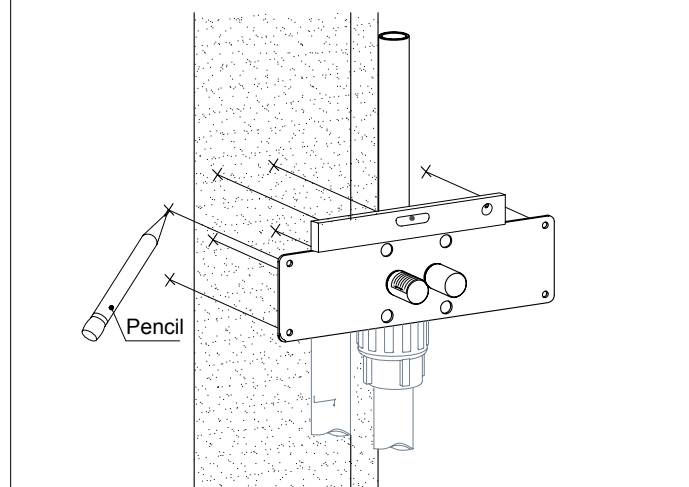




27. Place the locating plate on the shower holder. Install the plugs and protective sheath.



28. Mark the location of the mounting holes on the locating plate in the installation location. Use a level to ensure the holder is aligned properly.



8-Ø8 Holes

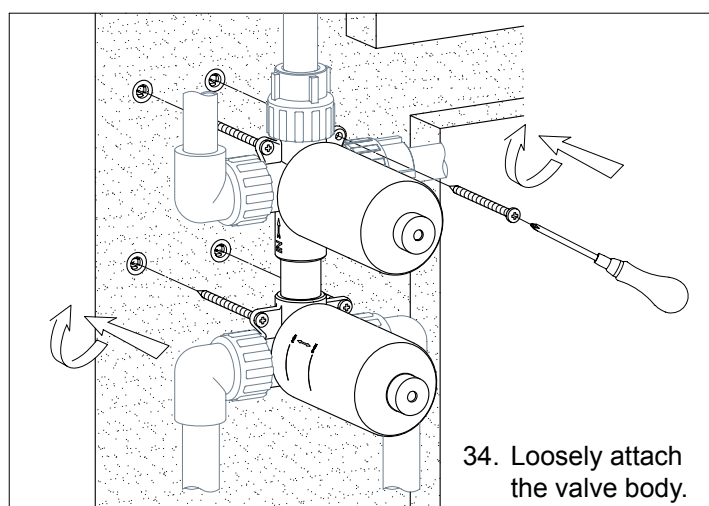
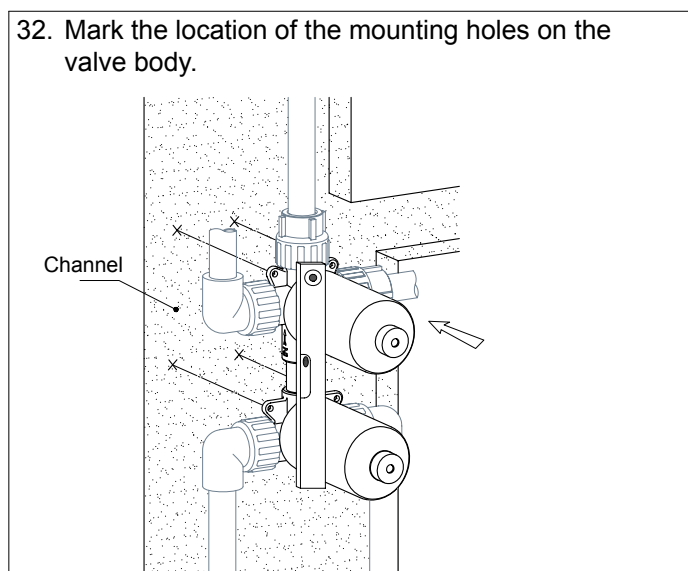
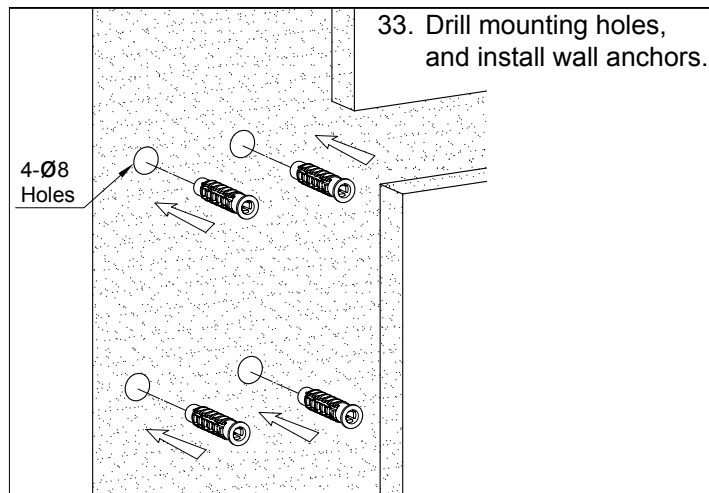
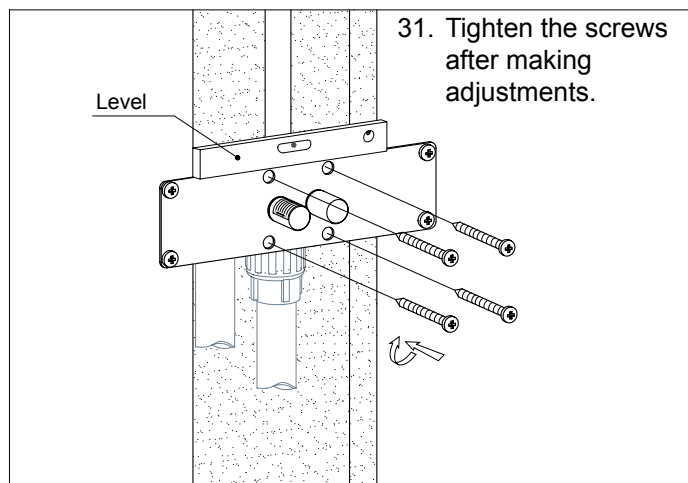
Anchor

29. Drill mounting holes with the appropriate drill bit, and install wall anchors.

30. Loosely attach the plate to the wall with self-tapping screws.

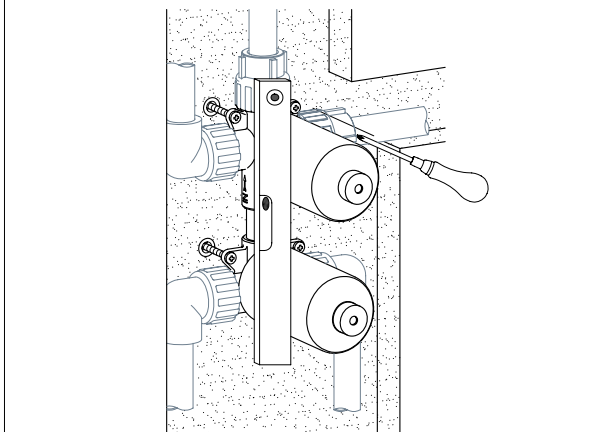
Self-Tapping Screw

Philips Screwdriver

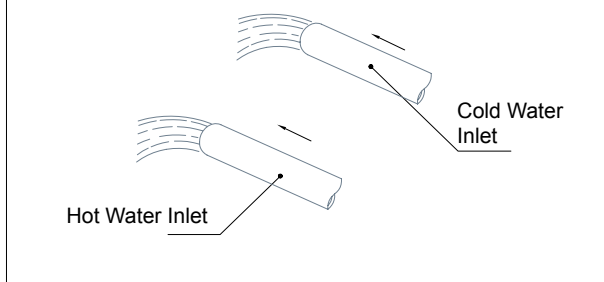




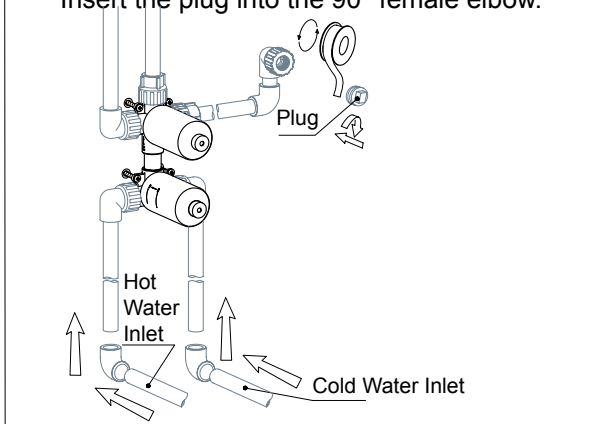
35. Tighten the screws after making adjustments.



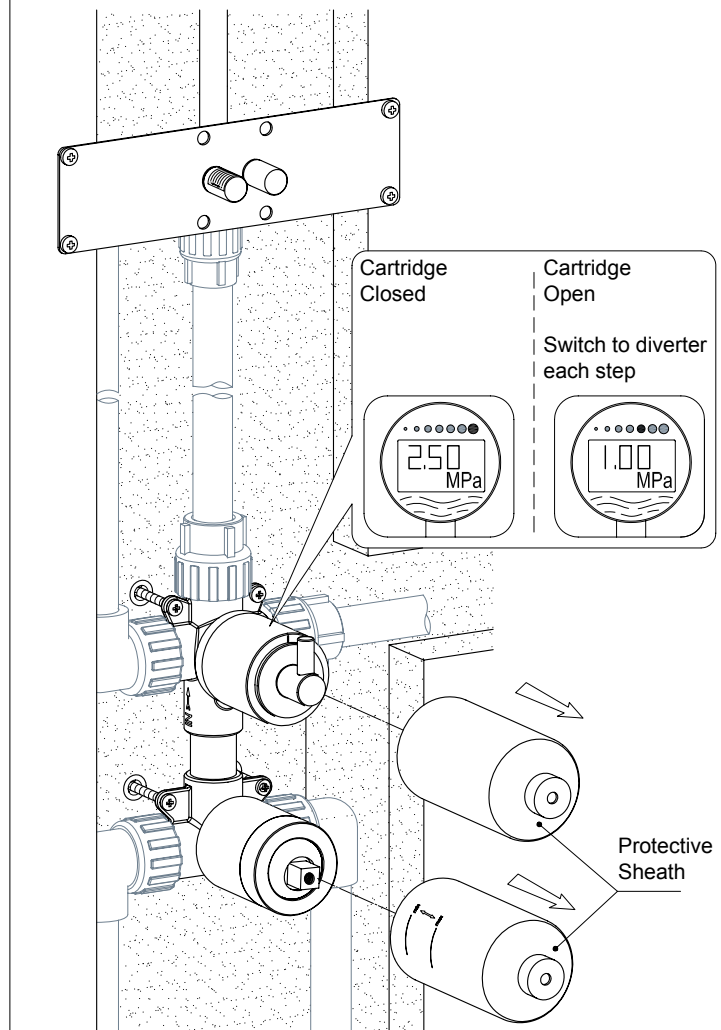
36. Turn the water on to flow water through the pipes clear out any dirt and debris.



37. Connect the inlet pipes. Wrap Teflon tape around the threaded portion of the plug. Insert the plug into the 90° female elbow.

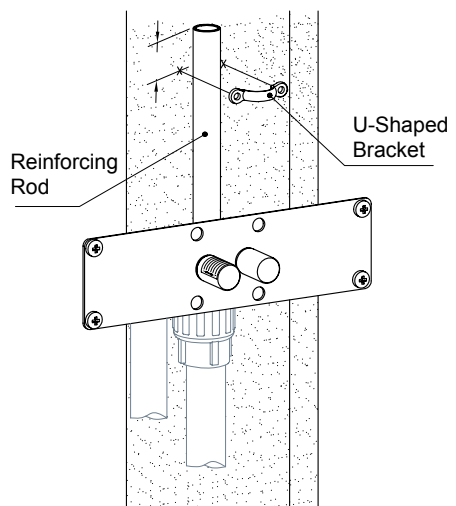


38. Remove the protective sheath, and run water to test the pressure and ensure there are no leaks.



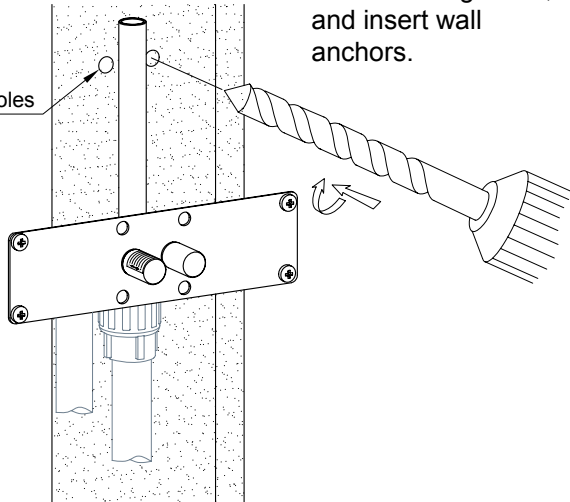


39. Place the u-shaped bracket on the reinforcing rod and mark the location of the mounting holes.

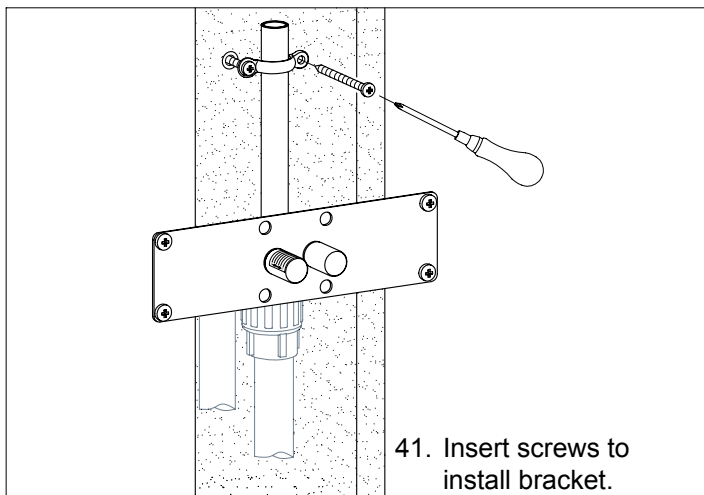


40. Drill mounting holes, and insert wall anchors.

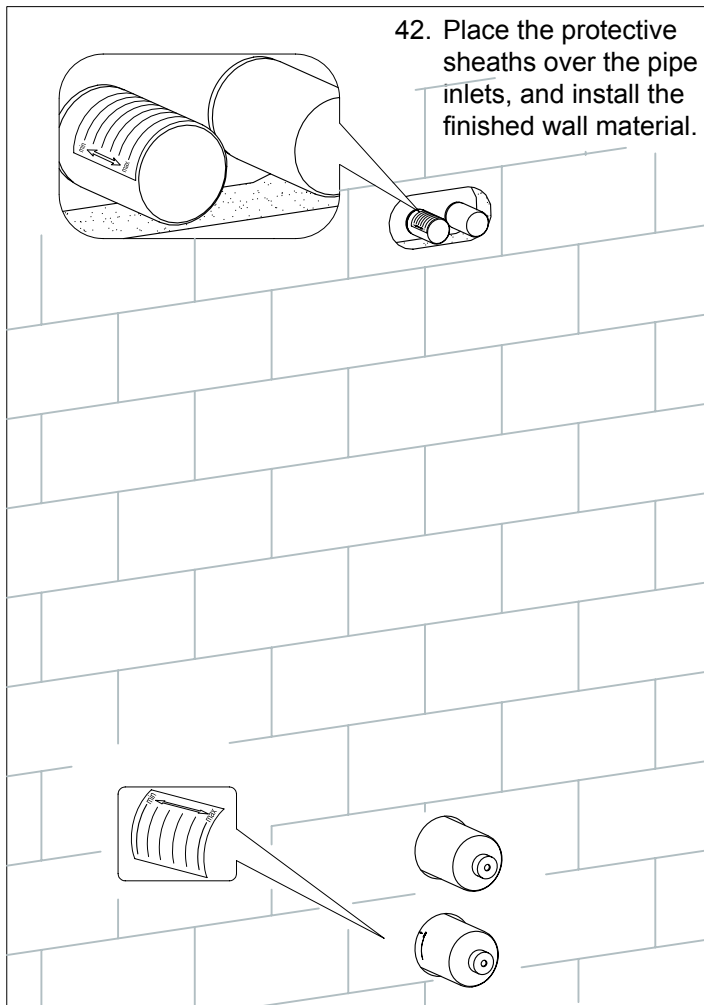
2-Ø8 Holes



41. Insert screws to install bracket.

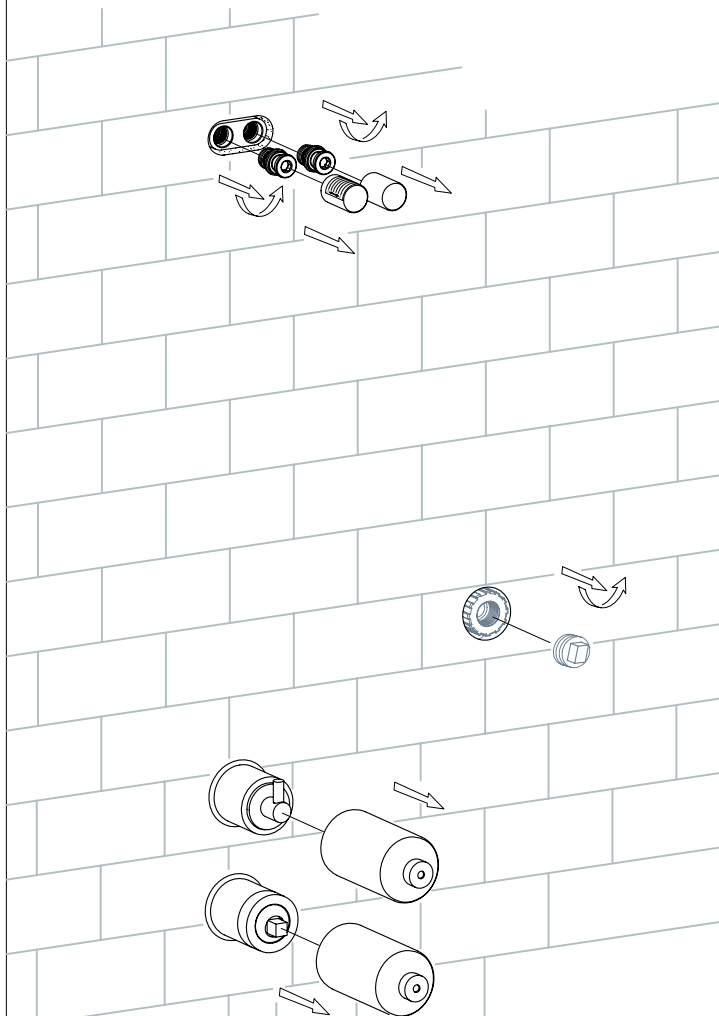


42. Place the protective sheaths over the pipe inlets, and install the finished wall material.

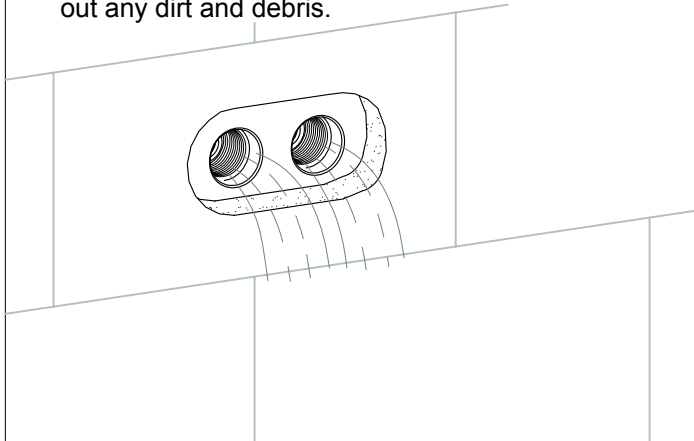




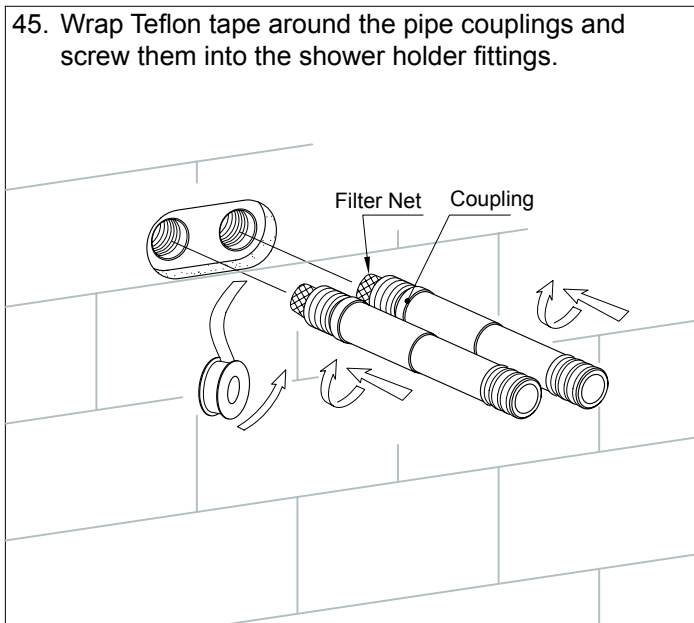
43. Remove the protective sheath and unscrew the plugs.

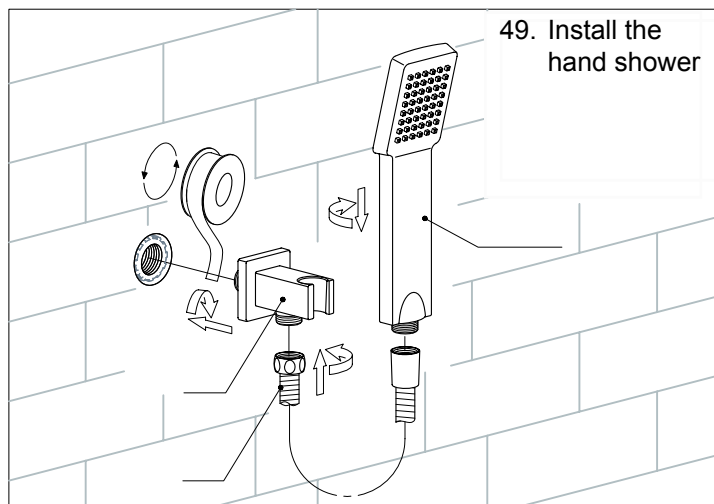
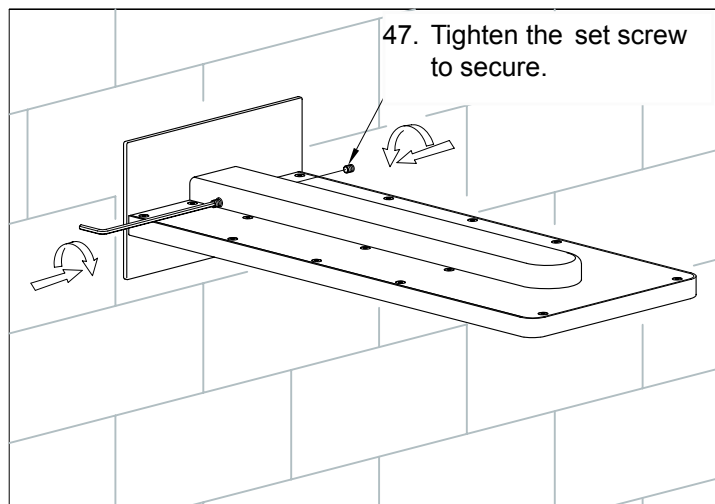
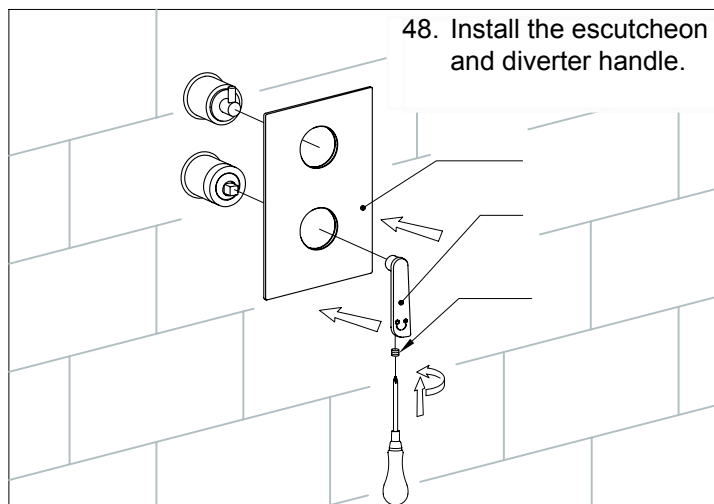
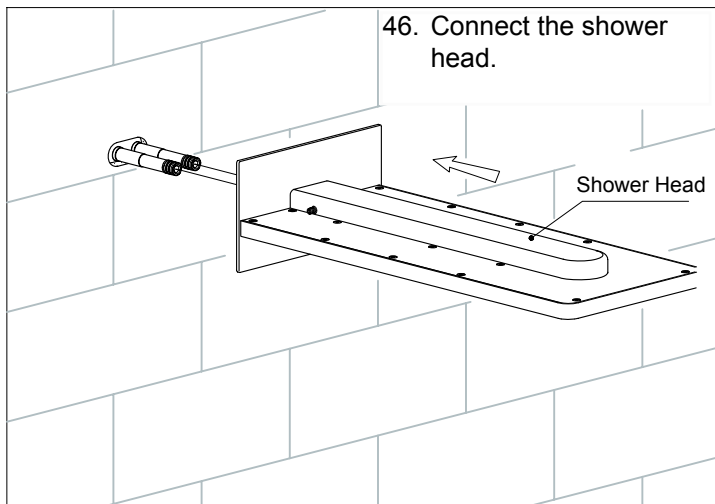


44. Turn the water on to flow water through the pipes clear out any dirt and debris.



45. Wrap Teflon tape around the pipe couplings and screw them into the shower holder fittings.





50. When installation is complete turn the faucet on, check to make sure that the hot and cold supplies are working correctly. Divert the water to each shower head output, and hand shower and allow the water to flow for approximately 60 seconds.



MAINTENANCE

Debris in the filter net may result in decreased water pressure. To clean the filter, remove the shower head and couplings. Rinse the filter net thoroughly and run water through the pipes to clean out any remaining dirt and debris.

