



LINDO LAUNDRY FAUCET INSTALLATION

BEFORE YOU BEGIN

We recommend consulting a professional if you are unfamiliar with installing plumbing fixtures. Signature Hardware accepts no liability for any damage to the faucet, plumbing, sink, counter top, or for personal injury during installation.

Observe all local plumbing and building codes.

Unpack and inspect the faucet for shipping damage. If any damage is found, contact our Customer Relations team at 1-866-855-2284.

GETTING STARTED

- Ensure that you have gathered all the required materials that are needed for the installation.
- For these instructions, it is assumed that the old faucet has been completely removed and any necessary repairs or modifications to the water supply have been completed.

TOOLS AND MATERIALS:



Plumbers
Tape



Thread
Sealant



Adjustable
Wrench*



Small
Bucket



Phillips
Screwdriver

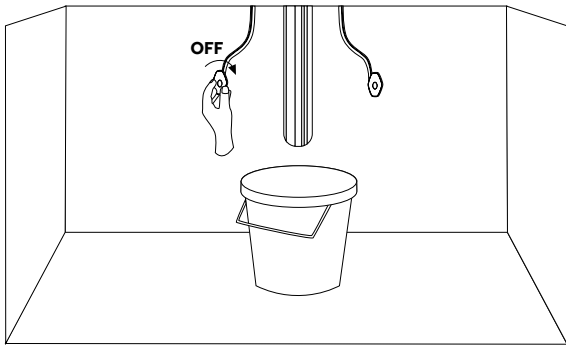


LINDO LAUNDRY FAUCET INSTALLATION

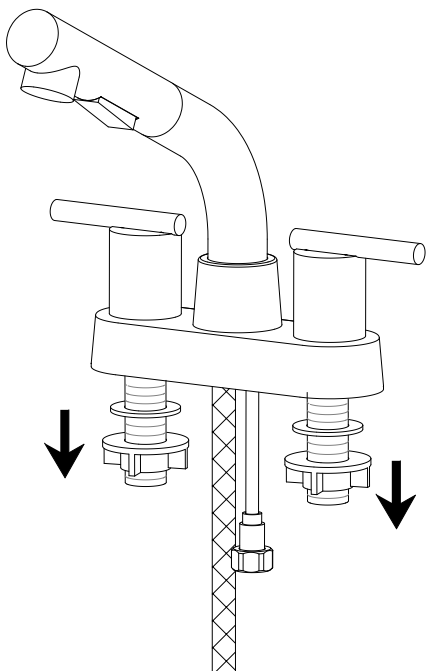
INSTALLATION

1. Ensure that the water supply below your sink is completely shut off by turning the valve all the way to the right.

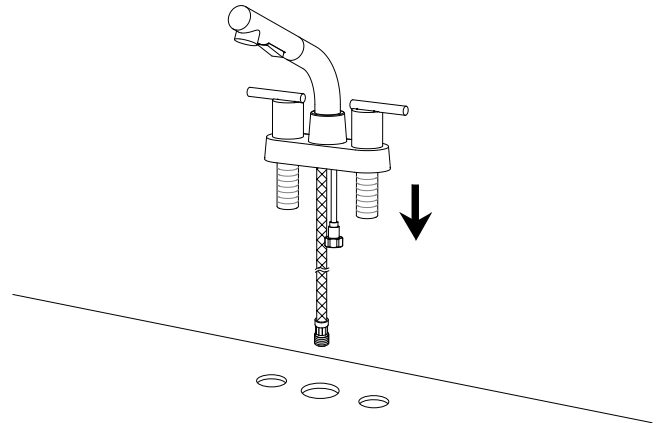
Tip: Place a small bucket below your workspace to catch any water that may drip during the installation process.



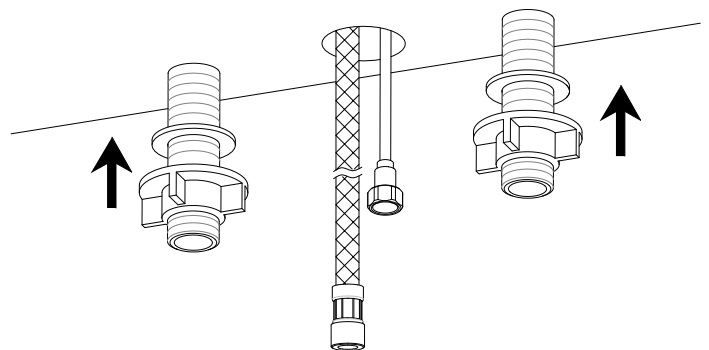
2. Remove the mounting hardware from the faucet, as shown.

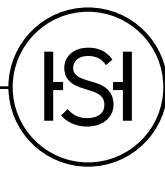


3. Insert the faucet into the prepared mounting holes, as shown. Ensure that the plastic gasket is on the base of the faucet before inserting.



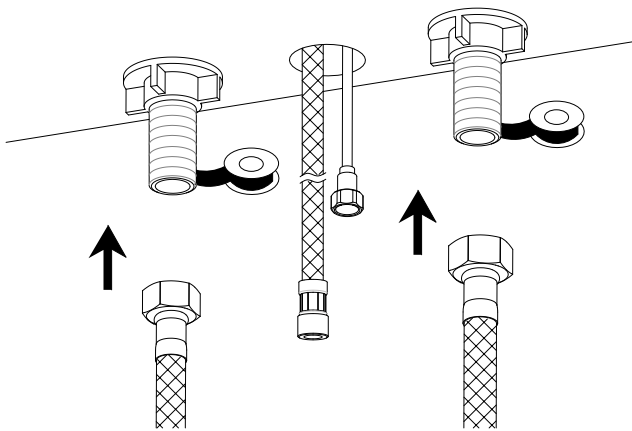
4. From below, slide the rubber gasket back onto the faucet, and secure it to the mounting surface by tightening the lock nuts.



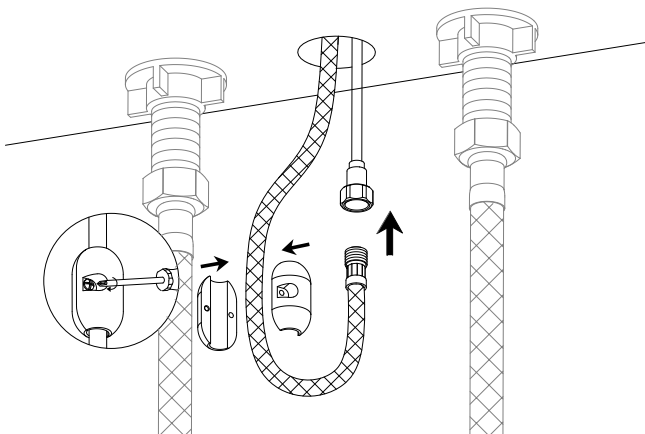


LINDO LAUNDRY FAUCET INSTALLATION

5. Attach the main water supply lines to the faucet. Apply plumber's tape or thread sealant to the threads before tightening. Tighten firmly, but be careful not to overtighten.



6. Attach the hand sprayer hose to its supply line. Apply plumber's tape or thread sealant to the threads before tightening. Attach the hand shower weight to the hose, just before the hose begins to bend, as shown.



7. Turn on the main water supply. Check for any leaks underneath.



8. Remove the hand sprayer from the faucet. Turn the faucet on to check for any leaks. Ensure that both hot and cold water are running properly. Allow the water to flow for approximately 60 seconds to remove any dust or loose sediment from the water lines. Reattach the hand sprayer.

