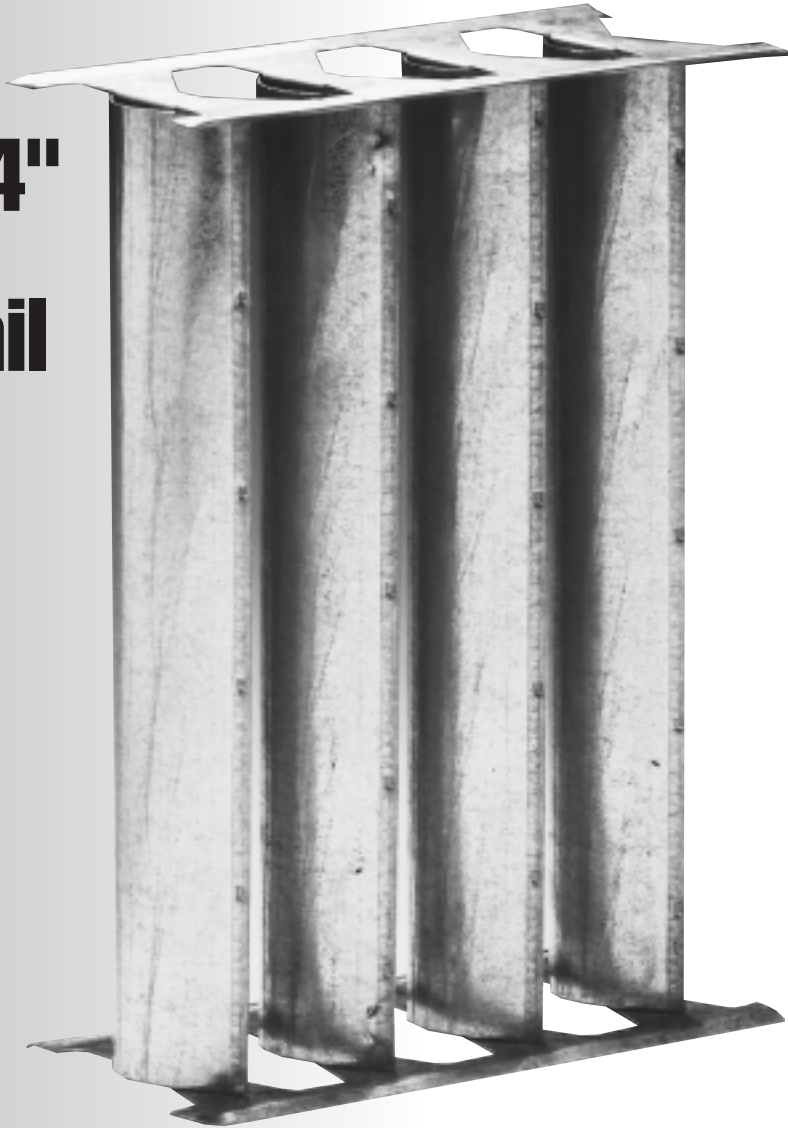


D U C T M A T E

PROrail™



2" and 4" Turning Vane Rail



TURNING VANE

PROrail: Every decision should be this successful. . .and this easy!

- Available for 2" and 4" Turning Vanes
- Available in specialty metals
- Insures precise vane alignment
- Assembly is quick and easy
- Fabricated with precision equipment
- Consistent product quality



DUCTMATE®

Industries, Inc.

PROrail™

2" and 4" Turning Vane Rail

DESCRIPTION

2" and 4" Turning Vane Rail

BASIC USE

Provides a self-aligning, easy means of securing turning vanes for the purpose of directing air around mitered elbows.

SPECIAL CHARACTERISTICS

Precision stamped from hot-dipped galvanized steel

Available from stock through a nationwide distributor network

Pressure tested to 15" w.g. with no separation

Trained Ductmate personnel are available to assist with additional technical questions

Exclusive patented features ensure that the rail will remain intact, and your airflow efficient, even under pressure

PRODUCT GUARANTEE

PROrail is guaranteed against defective material.

PACKAGING INFORMATION

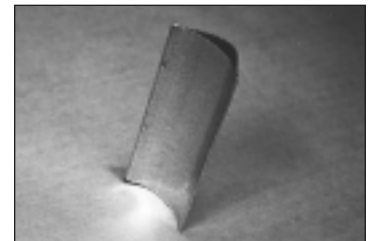
Part#	Size	Gauge	Ft. per carton
2PRGA22	2"	22	100
2PRGA24	2"	24	100
4PRGA22	4"	22	100
4PRGA24	4"	24	100

INSTALLATION INSTRUCTIONS

1. Cut PROrail to length.



2. Cut the vanes to length.



3. Set the vanes onto the bottom rail.



4. Insert the top rail tabs into the vanes.



Assembly is ready to be inserted into the duct.
Fasten to duct wall per the SMACNA recommendations.



CHARLEROI, PA

210 Fifth Street
Charleroi, PA 15022
800-245-3188
724-258-0500
FAX: 724-258-5494

LODI, CA

810 S. Cluff Avenue
Lodi, CA 95240-3141
800-344-3270
209-333-4680
FAX: 209-333-4678

www.ductmate.com



Distributed By: