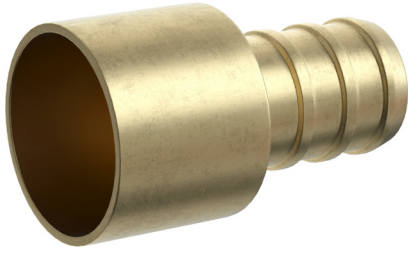
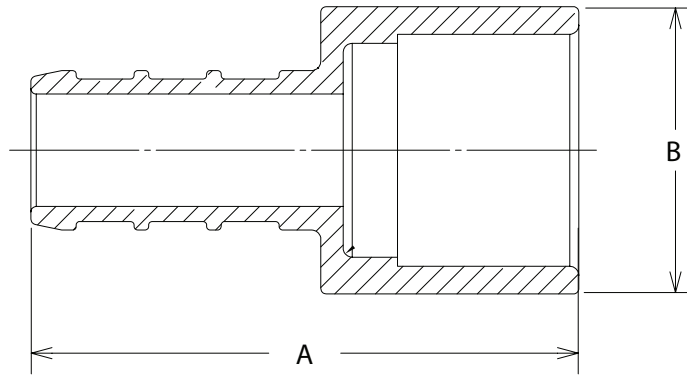


F1807 BRASS PEX MALE SWEAT ADAPTER



- Simple and dependable plumbing connection
- Easy installation
- Leak-proof connections
- Lead-free brass
- Can be used with copper PEX crimp rings or stainless steel PEX clamps
- Certified to IAPMO IGC 319-2016 and CSA B137.5-2020
- Certified to NSF/ANSI 372-2016, NSF/ANSI 61-2017, and NSF/ANSI 14-2016a
- Certified to ASTM F1807-2019b and CSA B137.5-2017
- Certified to NSF/ANSI/CAN 61-2019
- cUPC listed



Part No.	Description	A - in (mm)	B - in (mm)	Weight-lbs (grams)
C76047LF	3/8" F1807 x 1/2"	1.19 (30.23)	0.62 (15.85)	0.02 (9.07)
C76048LF	1/2" F1807	1.19 (30.23)	0.62 (15.85)	0.02 (9.07)
C76049LF	1/2" F1807 x 3/4"	1.44 (36.60)	0.87 (22.20)	0.04 (18.14)
C76050LF	3/4" F1807	1.52 (38.60)	0.87 (22.20)	0.06 (27.22)
C76051LF	1" F1807	1.75 (44.50)	0.94 (23.80)	0.10 (45.36)

F1807 Specified Dimensions	ID - in (mm)	OD - in (mm)
1/2" End Connection	.37(9.30)	.47(11.98)
3/4" End Connection	.55(13.85)	.67(16.96)
1" End Connection	.72(18.22)	.86(21.74)