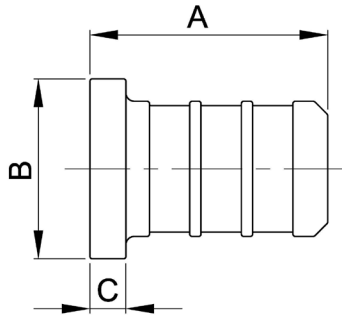


## F2159 POLY PEX PLUG



- Simple and dependable plumbing connection
- Easy installation
- Leak-proof connections
- Polymer construction
- Manufactured of premium-grade resin with non-mixed blends
- Can be used with brass PEX crimp rings or stainless steel PEX clamps
- Certified to ASTM F2159-2014 and CSA B137.5-2013
- Certified to ASTM F877-2020 and CSA B137.5-2020
- Certified to NSF/ANSI 14-2015, NSF/ANSI 14-2016a, and NSF/ANSI 372-2011
- Certified to NSF/ANSI/CAN 61-2018
- cUPC listed



Part No.	Description	Color	A - in (mm)	B - in (mm)	C - in (mm)	Weight-lbs (grams)
C76768	1/2" F2159	Black	0.83 (21.20)	0.63 (16.00)	0.13 (3.20)	0.004 (1.90)
C76740	1/2" F2159	White	0.83 (21.20)	0.63 (16.00)	0.13 (3.20)	0.004 (1.90)
C76769	3/4" F2159	Black	0.83 (21.20)	0.83 (21.00)	0.13 (3.20)	0.01 (3.70)
C76741	3/4" F2159	White	0.83 (21.20)	0.83 (21.00)	0.13 (3.20)	0.01 (3.70)
C76771	1" F2159	Black	0.99 (25.20)	0.98 (25.00)	0.14 (3.50)	0.01 (6.50)

F2159 Specified Dimensions	ID - in (mm)	OD - in (mm)
1/2" End Connection	.37(9.30)	.47(11.98)
3/4" End Connection	.55(13.85)	.67(16.96)
1" End Connection	.72(18.22)	.86(21.74)