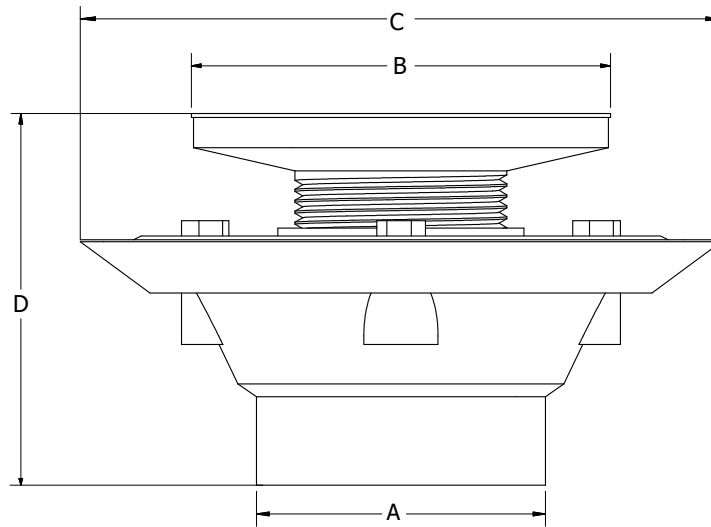


2" X 3" SHOWER DRAIN WITH 2" SPUD AND 4.25" STRAINER



- Fits over 2" or inside 3" Schedule 40 DWV pipe
- Ability to use a snap-in or screw-in strainer
- Low profile for first and second floor installations
- Beveled edge allows for recessed installation
- Reversible clamping ring for additional 1/2" height adjustment
- Brass inserts ensure secure clamping of membrane
- Dual weep holes
- Recessed sump area for added drainage
- Use D50998 tailpiece extension when additional height is needed



Part No.				Strainer - Shape	Strainer - Finish	A - Pipe Size	B	C	D
PVC	ABS	PVC w/ Test Plug	ABS w/ Test Plug						
D50001	D50301	D50001TP	D50301TP	Round	Stainless Steel	2.39" ID, 3.04" OD	4.25"	6.50"	3.12" - 4.40"
D50002	D50302	D50002TP	D50302TP	Round	Polished Brass	2.39" ID, 3.04" OD	4.25"	6.50"	3.12" - 4.40"
D50011	D50311	D50011TP	D50311TP	Round	Chrome Plated Cast	2.39" ID, 3.04" OD	4.25"	6.50"	3.12" - 4.40"
D50130	D50330	D50130TP	D50330TP	Round	Nickel Bronze Cast	2.39" ID, 3.04" OD	4.25"	6.50"	3.12" - 4.40"
D50132	D50332	D50132TP	D50332TP	Round	Polished Brass Cast	2.39" ID, 3.04" OD	4.25"	6.50"	3.12" - 4.40"
D50134	D50334	D50134TP	D50334TP	Square	Chrome Plated Cast	2.39" ID, 3.04" OD	4.25"	6.50"	3.12" - 4.40"
D50135	D50335	D50135TP	D50335TP	Square	Polished Brass	2.39" ID, 3.04" OD	4.25"	6.50"	3.12" - 4.40"