

Snap 'N Shield for strut channel

Features and benefits

- Fast, easy installation – snaps onto strut channel; up to 60% quicker than traditional metal shields
- No tools required
- Horizontal installation attachment feature to minimize the need to lift the pipe during installation
- Tight snap-on fit design helps eliminate shield movement which helps prevent insulation damage
- Tapered lip end design helps protect insulation from damage that can be caused by sharp edge of traditional saddles
- High sidewalls are designed to contain refrigerant liquid lines for efficient system installation
- Designed for side-by-side installation to help minimize costs in high density applications
- Wide mounting flange to allow for optional self-tapping screws
- MSS standards require 12" of surface contact for pipe sizes up to 4". All sizes of Snap 'N Shield™ have 12" of surface contact
- Built-in cable tie grooves
- UL Classified for US and Canada
- Patent(s) pending



Pipe support technical specifications

Applications:

Strut or trapeze mounted horizontal pipe runs for refrigeration, air conditioning and plumbing

Certification:

- UL classified for USA UL723 (ASTM E84) and UL classified for Canada per CAN/ULC S102.2
- Material is FDA compliant, RoHS compliant, CA Proposition 65 compliant

Available colors:

- Black (B)
- White (W)

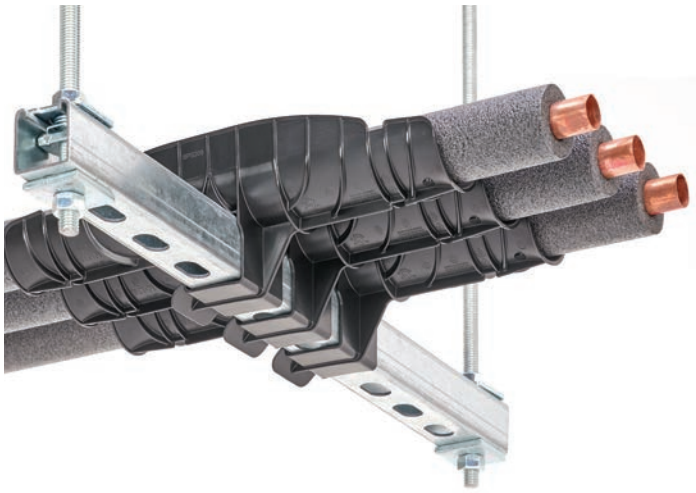
Material:

Prime grade of high-impact copolymer polypropylene

- UV resistant
- Operating temperature -40° to 178°F
- Paintable
- Custom textured interior shield surface to allow for thermal expansion of insulated piping

Black Support Catalog #	White Support Catalog #	Inside Opening		Weight/C	
		Inches	(mm)	Lbs.	(kg)
BPS200B	BPS200W	2.35"	60	21.5	9.8
BPS300B	BPS300W	3.46"	88	29.8	13.5
BPS400B	BPS400W	4.50"	114	38.1	17.3
BPS500B	BPS500W	5.52"	140	46.4	21.0
BPS600B	BPS600W	6.50"	165	55.1	25.0
BPS800B	BPS800W	8.64"	220	75.3	34.2

Pipe support for refrigeration, air conditioning and plumbing



Snap 'N Shield pipe support strut trapeze application



Clevis hanger

Band hanger

Snap 'N Shield pipe support hanger application

Sizing tables*

Sch. 40/80 Pipe	Insulation Thickness				
	1/2"	3/4"	1"	1 1/2"	2"
1/4"	BP_200	BP_200	BP_300	BP_400	BP_500
3/8"	BP_200	BP_200	BP_300	BP_400	BP_500
1/2"	BP_200	BP_200	BP_300	BP_400	BP_500
3/4"	BP_200	BP_300	BP_300	BP_400	BP_500
1"	BP_200	BP_300	BP_300	BP_400	BP_500
1 1/4"	BP_300	BP_300	BP_400	BP_500	BP_600
1 1/2"	BP_300	BP_300	BP_400	BP_500	BP_600
2"	BP_300	BP_400	BP_400	BP_500	BP_600
2 1/2"	BP_400	BP_400	BP_500	BP_600	BP_800
3"	BP_400	BP_500	BP_500	BP_600	BP_800
3 1/2"	BP_500	BP_500	BP_600	BP_800	BP_800
4"	BP_500	BP_600	BP_600	BP_800	BP_800
5"	BP_800	BP_800	BP_800	BP_800	—
6"	BP_800	BP_800	BP_800	—	—

Copper Tubing Size	Insulation Thickness				
	1/2"	3/4"	1"	1 1/2"	2"
1/4"	BP_200	BP_200	BP_300	BP_300	BP_400
3/8"	BP_200	BP_200	BP_300	BP_400	BP_400
1/2"	BP_200	BP_200	BP_300	BP_400	BP_500
5/8"	BP_200	BP_200	BP_300	BP_400	BP_500
3/4"	BP_200	BP_300	BP_300	BP_400	BP_500
1"	BP_200	BP_300	BP_300	BP_400	BP_500
1 1/4"	BP_300	BP_300	BP_300	BP_400	BP_500
1 1/2"	BP_300	BP_300	BP_400	BP_500	BP_600
2"	BP_300	BP_400	BP_400	BP_500	BP_600
2 1/2"	BP_400	BP_400	BP_500	BP_600	BP_800
3"	BP_400	BP_500	BP_500	BP_600	BP_800
3 1/2"	BP_500	BP_500	BP_600	BP_800	BP_800
4"	BP_500	BP_600	BP_600	BP_800	BP_800
5"	BP_600	BP_800	BP_800	BP_800	—
6"	BP_800	BP_800	BP_800	—	—

*Part sizing is the same for both hanger and strut attachments. Replace underscore with "S" for strut or "CH" for clevis hanger. For example: BPS600 for strut or BPCH600 for clevis hanger.

Snap 'N Shield for pipe hangers



Features and benefits

- Innovative, one-piece snap-on design for fast, easy installation onto clevis and band hangers
- No tools required
- Helps eliminate shield movement which helps prevent insulation damage
- Tapered end lip design helps protect insulation from damage that can be caused by sharp edge of traditional saddles
- High sidewalls are designed to contain refrigerant liquid lines for efficient system installation
- MSS standards require 12" of surface contact for pipe sizes up to 4". All sizes of Snap 'N Shield™ have 12" of surface contact
- Built-in cable tie grooves
- UL Classified for US and Canada
- Patent(s) pending



Pipe support technical specifications

Applications:

Clevis or band hangers used in horizontal pipe runs for refrigeration, air conditioning and plumbing

Certification:

- UL classified for USA UL723 (ASTM E84) and UL classified for Canada per CAN/ULC-S102.2
- Material is FDA compliant, RoHS compliant, CA Proposition 65 compliant

Available colors:

- Black (B)
- White (W)

Material:

Prime grade of high-impact copolymer polypropylene

- UV resistant
- Operating temperature -40° to 178°F
- Paintable
- Custom textured interior shield surface to allow for thermal expansion of insulated piping

Black Support Catalog #	White Support Catalog #	Inside Opening		Weight/C	
		Inches	(mm)	Lbs.	(kg)
BPCH200B	BPCH200W	2.35"	60	18.3	8.3
BPCH300B	BPCH300W	3.46"	88	25.2	11.4
BPCH400B	BPCH400W	4.50"	114	31.9	14.5
BPCH500B	BPCH500W	5.52"	140	38.4	17.4
BPCH600B	BPCH600W	6.50"	165	45.0	20.4
BPCH800B	BPCH800W	8.64"	220	59.8	27.1

Clevis Shield	Appropriate Clevis Hanger	Appropriate Band Hanger
BPCH200	B3100-2"	Fig. 200-2"
BPCH300	B3100-3"	Fig. 200-3"
BPCH400	B3100-4"	Fig. 200-4"
BPCH500	B3100-5"	Fig. 200-5"
BPCH600	B3100-6"	Fig. 200-6"
BPCH800	B3100-8"	Fig. 200-8"