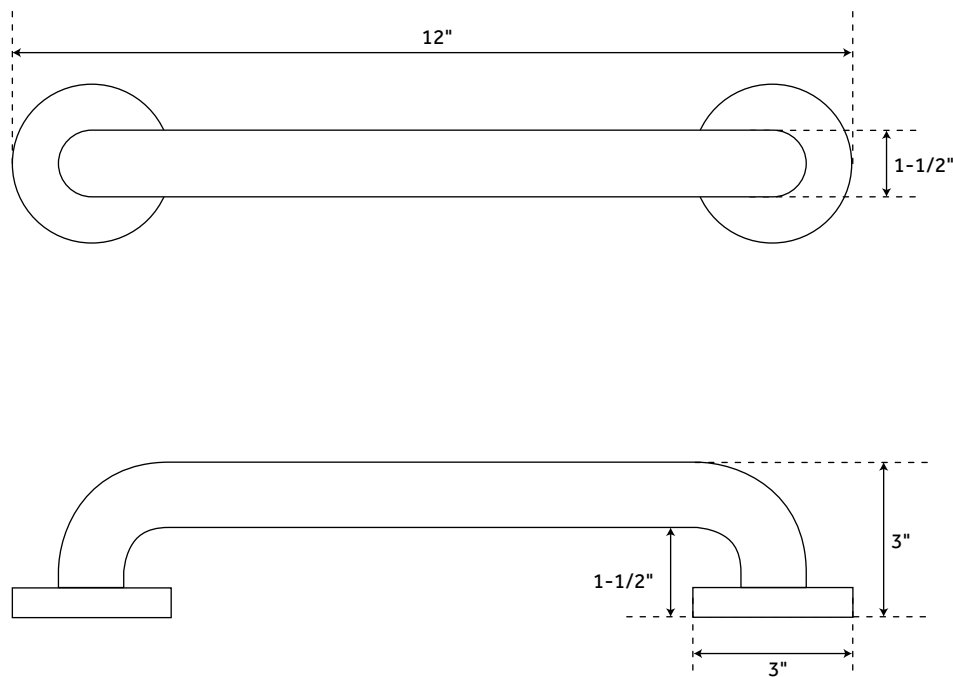


12" GRAB BAR

GRAB BAR WITH CONCEALED SCREWS - ADA COMPLIANT

SKU: 907609



FEATURES

Installation Type: Wall Mount
Features: ADA Compliant
Design: Traditional
Material: Stainless Steel
Length: 12"
Height: 3"
Depth: 1-1/2"
Mounting Hardware Included: Yes
Mounting Hardware Concealed: Yes
Assembly Required: No
Tube Diameter: 1-1/2"

SIGNATURE HARDWARE LIFETIME WARRANTY

See website for warranty information



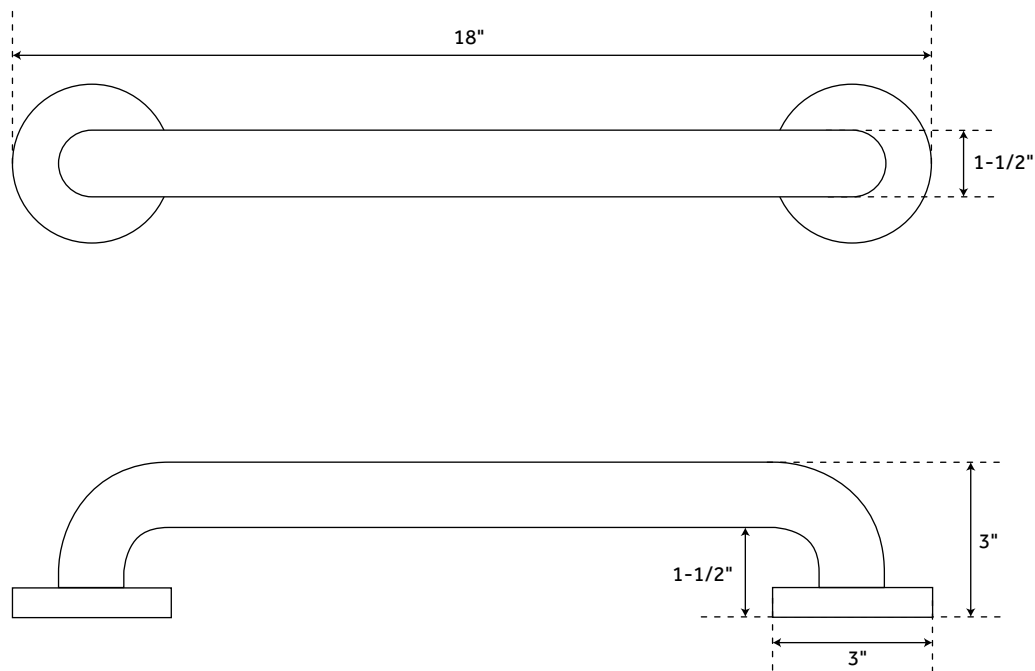
All measurements are approximate. Measurements may vary +/- 1/2".

REVISED 08/15/2019

18" GRAB BAR

GRAB BAR WITH CONCEALED SCREWS - ADA COMPLIANT

SKU: 907609



FEATURES

Installation Type: Wall Mount
Features: ADA Compliant
Design: Traditional
Material: Stainless Steel
Length: 18"
Height: 3"
Depth: 1-1/2"
Mounting Hardware Included: Yes
Mounting Hardware Concealed: Yes
Assembly Required: No
Tube Diameter: 1-1/2"

SIGNATURE HARDWARE LIFETIME WARRANTY

See website for warranty information



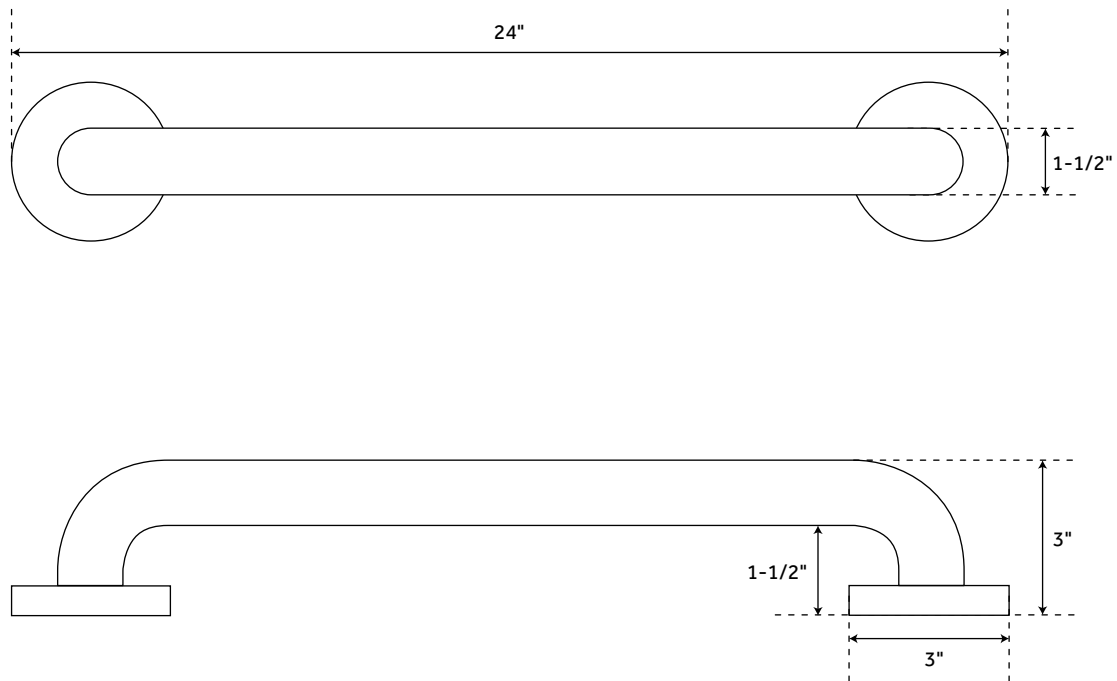
All measurements are approximate. Measurements may vary +/- 1/2".

REVISED 08/15/2019

24" GRAB BAR

GRAB BAR WITH CONCEALED SCREWS - ADA COMPLIANT

SKU: 907609



FEATURES

Installation Type: Wall Mount
Features: ADA Compliant
Design: Traditional
Material: Stainless Steel
Length: 24"
Height: 3"
Depth: 1-1/2"
Mounting Hardware Included: Yes
Mounting Hardware Concealed: Yes
Assembly Required: No
Tube Diameter: 1-1/2"

SIGNATURE HARDWARE LIFETIME WARRANTY

See website for warranty information



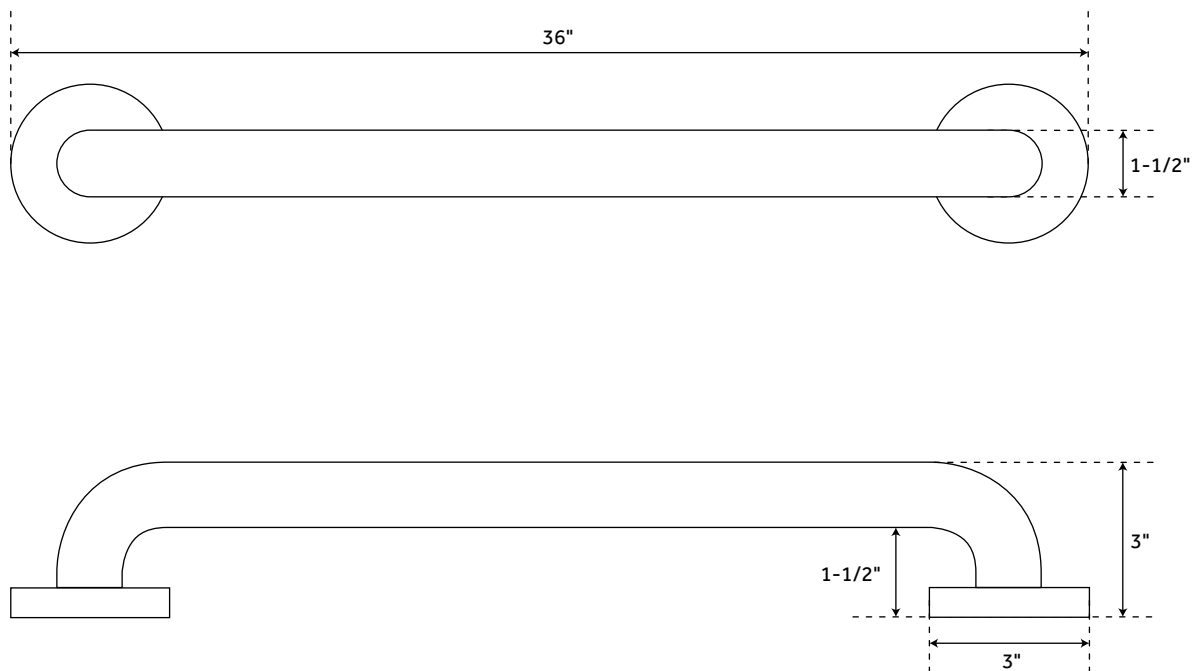
All measurements are approximate. Measurements may vary +/- 1/2".

REVISED 08/15/2019

36" GRAB BAR

GRAB BAR WITH CONCEALED SCREWS - ADA COMPLIANT

SKU: 907609



FEATURES

Installation Type: Wall Mount
Features: ADA Compliant
Design: Traditional
Material: Stainless Steel
Length: 36"
Height: 3"
Depth: 1-1/2"
Mounting Hardware Included: Yes
Mounting Hardware Concealed: Yes
Assembly Required: No
Tube Diameter: 1-1/2"

SIGNATURE HARDWARE LIFETIME WARRANTY

See website for warranty information



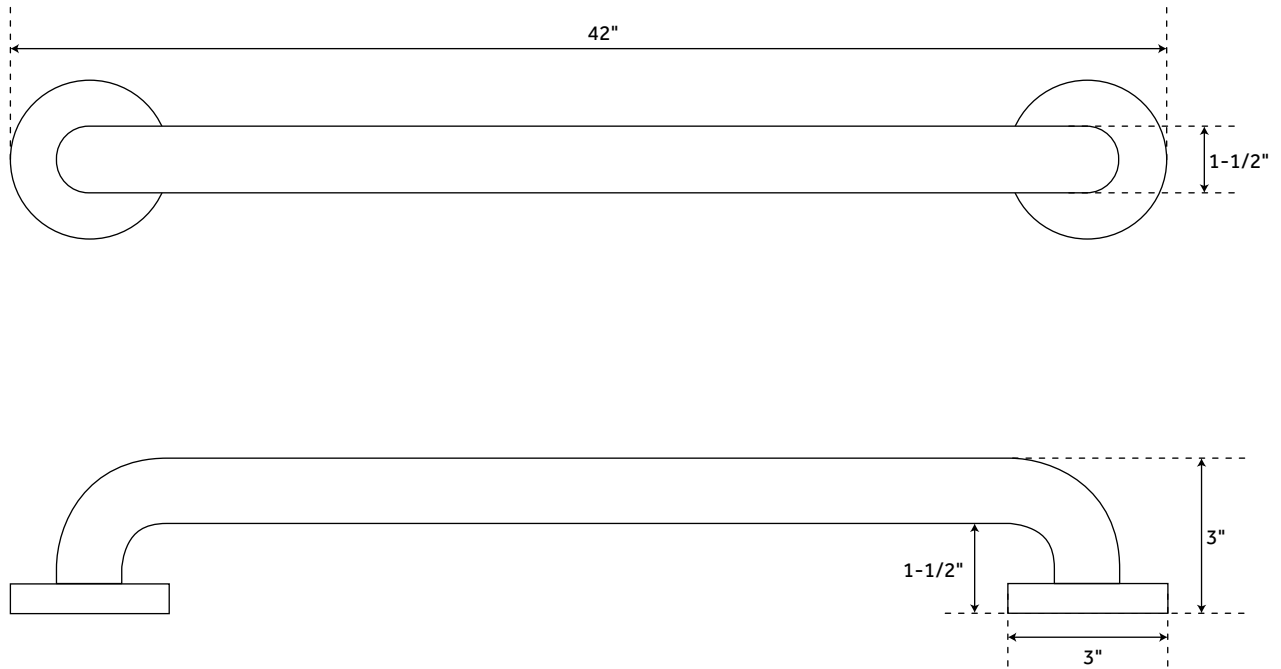
All measurements are approximate. Measurements may vary +/- 1/2".

REVISED 08/15/2019

42" GRAB BAR

GRAB BAR WITH CONCEALED SCREWS - ADA COMPLIANT

SKU: 907609



FEATURES

Installation Type: Wall Mount
Features: ADA Compliant
Design: Traditional
Material: Stainless Steel
Length: 42"
Height: 3"
Depth: 1-1/2"
Mounting Hardware Included: Yes
Mounting Hardware Concealed: Yes
Assembly Required: No
Tube Diameter: 1-1/2"

SIGNATURE HARDWARE LIFETIME WARRANTY

See website for warranty information



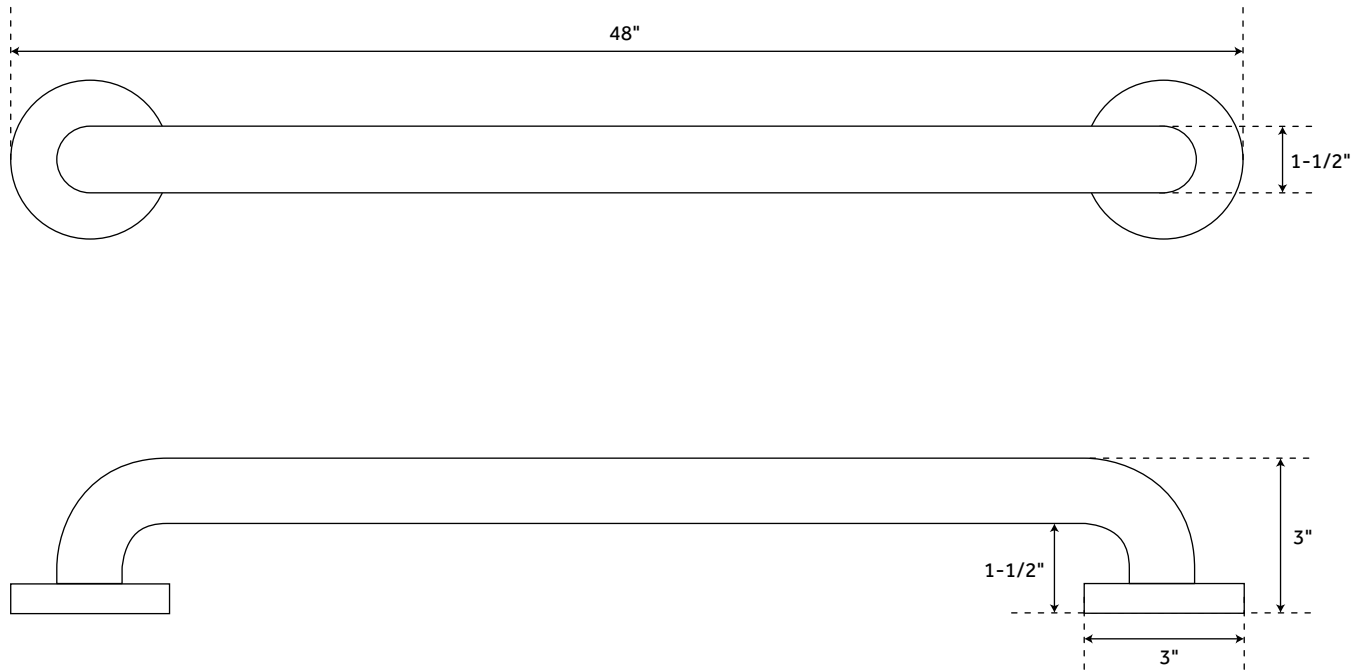
All measurements are approximate. Measurements may vary +/- 1/2".

REVISED 08/15/2019

48" GRAB BAR

GRAB BAR WITH CONCEALED SCREWS - ADA COMPLIANT

SKU: 907609



FEATURES

Installation Type: Wall Mount
Features: ADA Compliant
Design: Traditional
Material: Stainless Steel
Length: 48"
Height: 3"
Depth: 1-1/2"
Mounting Hardware Included: Yes
Mounting Hardware Concealed: Yes
Assembly Required: No
Tube Diameter: 1-1/2"

SIGNATURE HARDWARE LIFETIME WARRANTY

See website for warranty information



All measurements are approximate. Measurements may vary +/- 1/2".

REVISED 08/15/2019