



# Round Head Plug

**Specification:** ASME B16.11 for 1/8" - 4" only

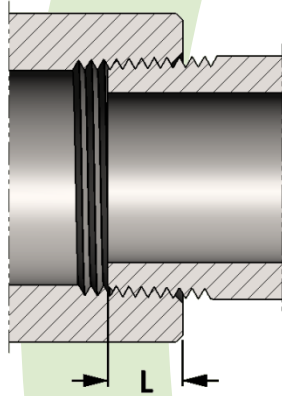
**Material:** Available in a complete range of Carbon Steels, Stainless Steels, Alloy Steels and Non-ferrous metals certified to ASTM, ASME, and Military standards.

**Sizes:** 1/8" - 8"

Also available as Bull Plugs as per MSS-SP95 and in special lengths

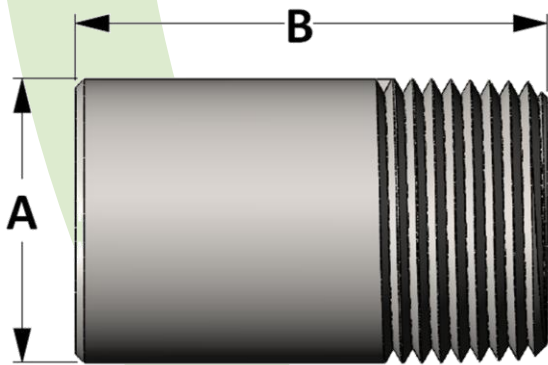
**Threads:** American National Standard Taper Pipe Threads  
NPT (ANSI/ASME B1.20.1-1983)

Also available in other thread forms: NPTF, NPSC, NPSM, BSPT, BSPP

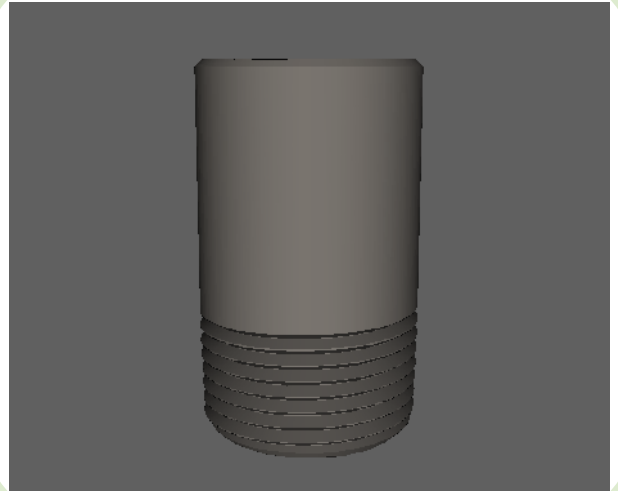


SIZE	L	SIZE	L
1/8	0.273	2	0.697
1/4	0.395	2-1/2	0.933
3/8	0.407	3	1.016
1/2	0.534	3-1/2	1.071
3/4	0.553	4	1.094
1	0.661	5	1.187
1-1/4	0.681	6	1.208
1-1/2	0.681	8	1.313

**Length of thread  
screwed into fitting**



Active  
**3D**  
Model



All dimensions are in inches • Weights are based in Carbon Steel

PIPE SIZE	Figure No. 06015														
	1/8	1/4	3/8	1/2	3/4	1	1-1/4	1-1/2	2	2-1/2	3	3-1/2	4	5	6
A	0.405	0.540	0.675	0.840	1.050	1.312	1.660	1.900	2.375	2.875	3.500	4.000	4.500	5.563	6.625
B	1.380	1.625	1.625	1.750	1.750	2.000	2.000	2.000	2.500	2.750	2.750	3.000	3.000	5.500	5.500
LBS	0.05	0.10	0.16	0.25	0.40	0.72	1.17	1.64	3.04	5.13	7.19	10.34	13.25	37.67	53.43