



Product Specification

Vanity Sink Base Cabinets

Brand: Continental Cabinets

Product Description: Vanity Sink Base Cabinets

Series: Andover

Door Style: Shaker Style – Full Overlay

Finish: White Rigid Thermofoil (RTF)

Model #: KVS24-SSW, KVS30-SSW, KVS36-SSW

Accessory: KATKX-SW

Vanity Sink Base Widths: 24", 30" and 36"

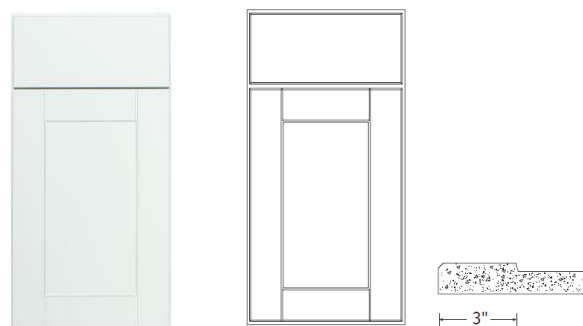
Height (All): 34½"

Depth (All): 21"

Doors

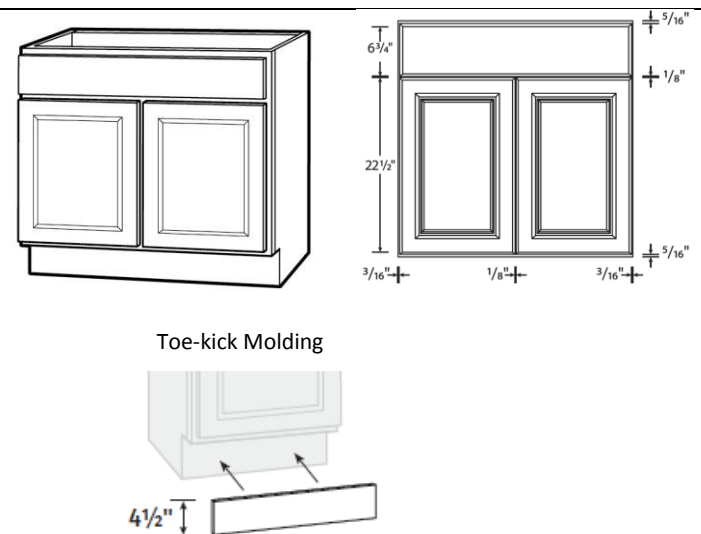
- Full overlay, shaker door style
- White Rigid Thermofoil (RTF) finish – a thick vinyl material pressed onto an 11/16" thick routed MDF (medium density fiberboard) panel with heat and pressure. Conforms to door shape and around edges to seal the surface
- Impact, scratch and stain resistant
- Passes KCMA edge soak test for water resistance

Door Profile



Vanity Base Cabinets

- 3/4" thick face frame, 1-1/2" wide material with pocket screwed vinyl wrapped construction
- 3/8" hardboard full back panel
- 3/8" bottom panel, fully encapsulated engineered particle board wood
- 1/2" engineered particle board wood side panels with white laminate exterior to match cabinet finish
- Double door cabinets allow for full-access, no center stile
- Natural maple laminate finished interiors
- Unfinished toe notch toe-kick (finished toe-kick sold separate)
- Fully concealed, adjustable, self-closing hinges



AIR RESOURCES BOARD
CARB Phase 1 and Phase 2 Certified

**Meets HUD Minimum
Property Standards**

Adding Value to America's Homes

www.ContinentalCabinetry.com • 800-229-5840