

Model 700XLFP LEAD-FREE*

High Capacity Dual Check Valve Backflow Preventer

(1", 1-1/4" & 1-1/2")

* This product contains a weighted average lead content less than .25% for wetted surfaces



□ Installation □ Maintenance Instructions

The ZURN WILKINS Model 700XLFP Dual Check Valve is designed for installation on potable water lines where a cross-connection could result in pollution of potable water. If a health hazard could result from a cross-connection, use a ZURN WILKINS Model 375XL Reduced Pressure Principle Backflow Preventer.

INSTALLATION INSTRUCTIONS

1. Before installation of valve, flush lines thoroughly to remove all foreign matter from the line. ZURN WILKINS recommends installing a Model SXL wye strainer upstream of the valve to prevent fouling of the checks.

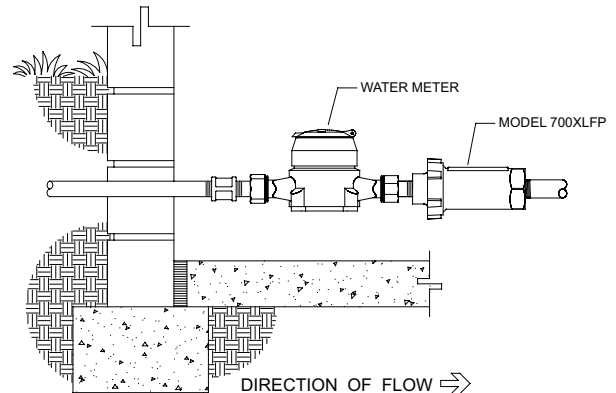
CAUTION: Do not use a strainer in seldom used emergency lines such as fire lines.

2. The ZURN WILKINS Model 700XLFP is not position sensitive. It may be installed horizontally or vertically.
3. Install the Model 700XLFP in a location that will be easy to reach for future maintenance.
4. Use caution when soldering near valve. Remove check assemblies if excessive heat will be applied to valve.
5. The Model 700XLFP must be protected from freezing.
6. Do not install the Model 700XLFP where it will be subjected to pressure greater than 175 psi or temperature greater than 180° F.

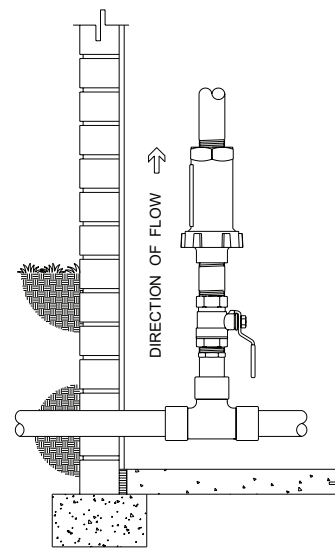
MAINTENANCE

Servicing the Model 700XLFP involves replacing the check assemblies.

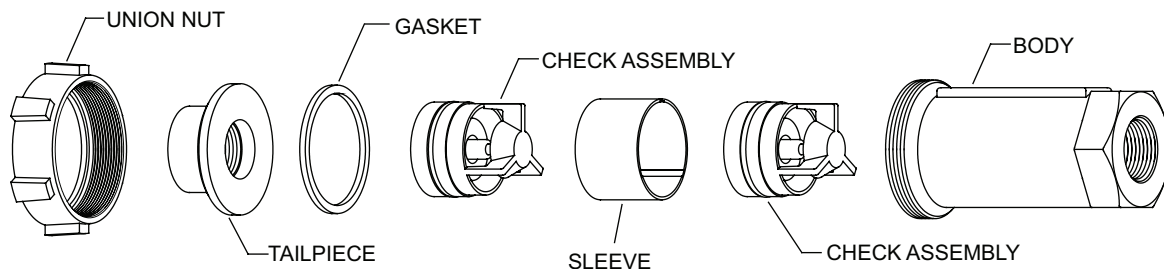
1. Turn off inlet water supply.
2. Loosen union nut.
3. Remove Model 700XLFP from the line.
4. Note the direction of check assemblies. Push check assemblies out of valve.
5. Clean inside of valve body.
6. Replace parts in reverse order of removal. Make sure check assemblies are installed in correct direction.
7. Reinstall valve and turn on water.



INDOOR INSTALLATION



VERTICAL INSTALLATION



WARRANTY: ZURN WILKINS Valves are guaranteed against defects of material or workmanship when used for the services recommended. If in any recommended service, a defect develops due to material or workmanship, and the device is returned, freight prepaid, to ZURN WILKINS within 12 months from date of purchase, it will be repaired or replaced free of charge. ZURN WILKINS' liability shall be limited to our agreement to repair or replace the valve only.

⚠ **WARNING:** Cancer and Reproductive Harm - www.P65Warnings.ca.gov
⚠ **ADVERTENCIA:** Cáncer y daño reproductivo - www.P65Warnings.ca.gov
⚠ **AVERTISSEMENT:** Cancer et néfastes sur la reproduction - www.P65Warnings.ca.gov



1747 Commerce Way, Paso Robles, CA 93446 Phone:855-663-9876 Fax:805-238-5766

ZURN WILKINS

www.zurn.com