

LIVING DISTRICT

Collection: EAMON

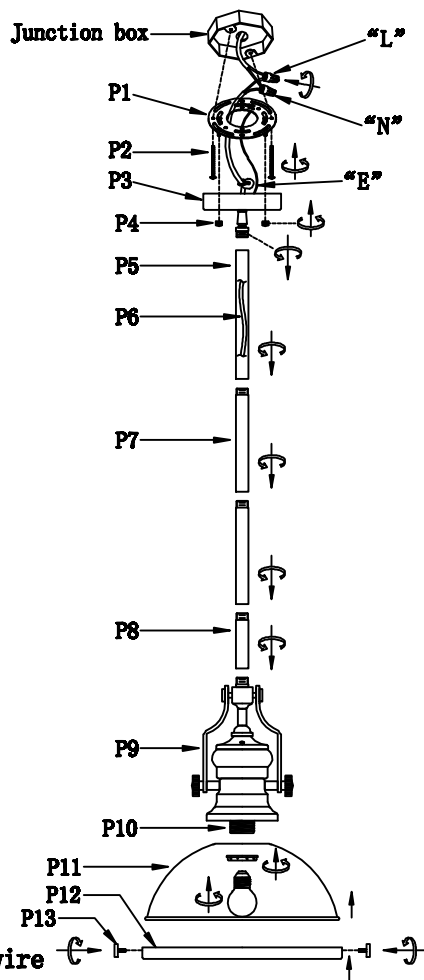
Installation manual for:

LD5001D13 D13"H13.3"L1

Installation instructions:

1. Please fix the tube (P8, P7, P5) and canopy (P3) into the lamp body (P9).
2. Black wire from ceiling (junction box) attaches to "L" wire from the fixture.
3. White wire from ceiling (junction box) attaches to "N" wire from the fixture.
4. "E" wire from the fixture is attached to the mounting bracket and an additional "E" wire from the mounting bracket must be secured to the junction box.
5. Secure mounting bracket to the junction box.
6. Insert screws (P2) in side of top unit the mounting bracket.
7. Fix the Mounting bracket (P1) to the Canopy and tighten by the finial (P4).
8. Install the lampshade (P11) to lampholder (P10).
9. Install the bulbs (not included) into the lamp fixture.
10. Use the finial (P13) to fix the metal ring (P12) to the lampshade (P11).

The end!



"L" = Hot wire
 "N" = Neutral wire
 "E" = Ground wire

PARTS LIST

part	picture	Description	Qty	Check list
P1		D4" Mounting bracket	1	
P2		5/32-32 Screw	2	
P3		ø4.7" canopy plat	1	
P4		finial	2	
P5		D3/4" * L16" metal tube	1	
P6		Power Cord 67" 18# Black	1	
P7		D3/4" * L12" metal tube	2	
P8		D3/4" * L6" metal tube	1	
P9		lamp body	1	
P10		E26 lampholder	1	
P11		D12" metal lampshade	1	
P12		D12.2" metal ring	1	
P13		finial	4	