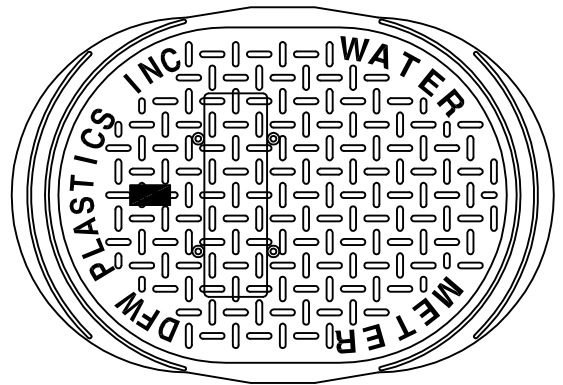
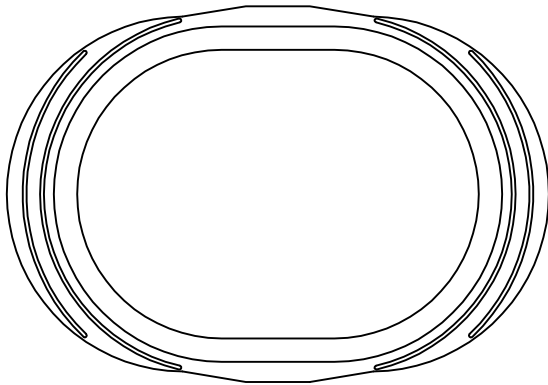
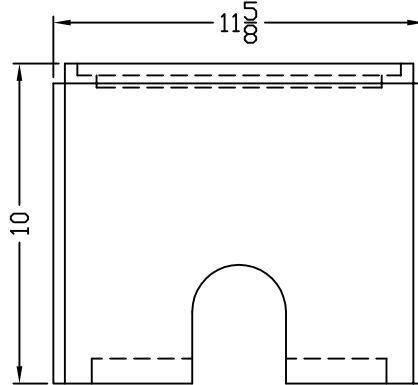
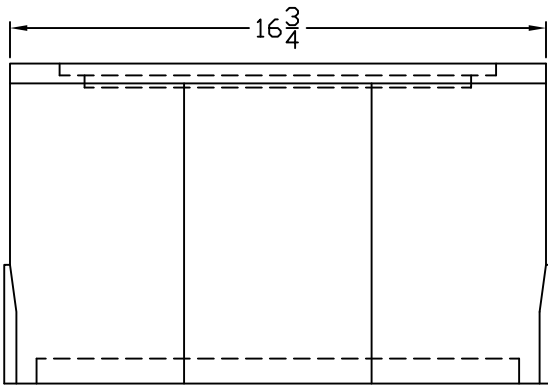


**DFW1017-1-LID**



**DFW1017-10-1**



**DFW1017-10-BODY**

LID KEY	
1	BLACK COLOR

**NOTES**

- 1) DIM'S ± 1/8 U.N.O.
- 2) WALL THICKNESS: 3/8 ± 5%

DFW PLASTICS, INC. ENGAGES IN ONGOING RESEARCH AND DEVELOPMENT TO IMPROVE AND ENHANCE ITS PRODUCTS. THEREFORE, DFW PLASTICS, INC RESERVES THE RIGHT TO CHANGE PRODUCT OR SYSTEM SPECIFICATIONS WITHOUT NOTICE.



DFW PLASTICS, INC.  
 1001 JARVIS RD  
 FORT WORTH, TX. 76179  
 (817) 439-3600  
 (817) 439-3700 (f)  
 www.dfwplasticsinc.com

DFW1017-10-1

FILE NAME:	*
UPDATED:	02/01/2012
DRAWN BY:	J.C.A.
PLOT SCALE:	1:6